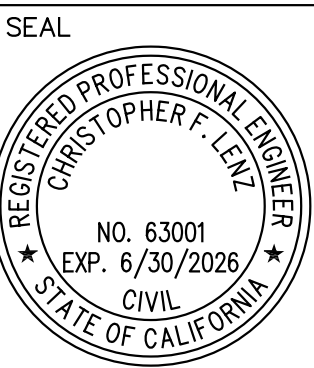


Underground Service Alert
 Call: TOLL FREE
811
 TWO WORKING DAYS BEFORE YOU DIG

BENCHMARK DESCRIPTION
 bm description
 DATUM: xxxx xx
 ELEVATION xxx.xx'
 SCALE: AS SHOWN

MARK	BY	DATE	REVISIONS	APPR	DATE

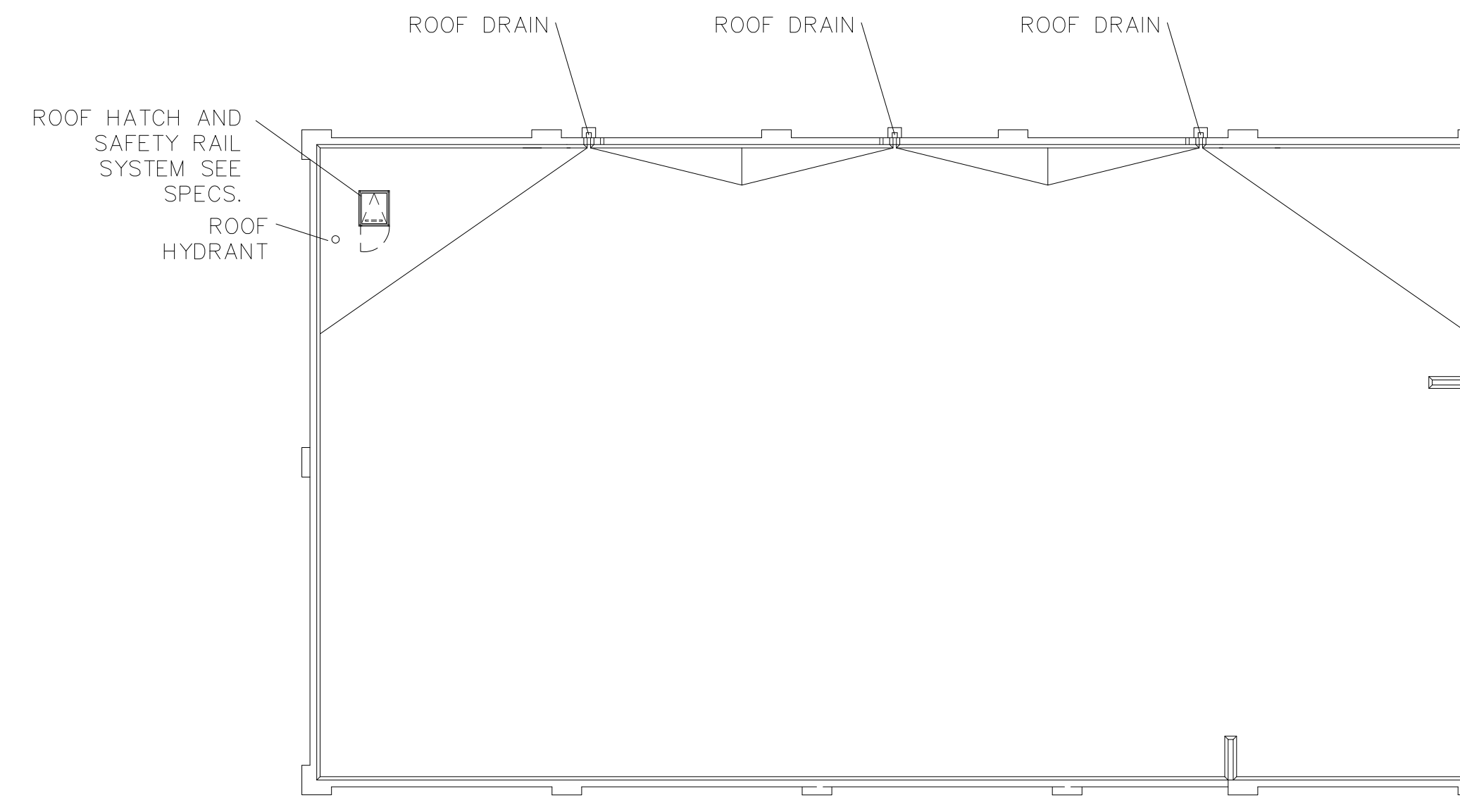
CITY OF PERRIS
 APPROVED BY:
 CITY ENGINEER DATE



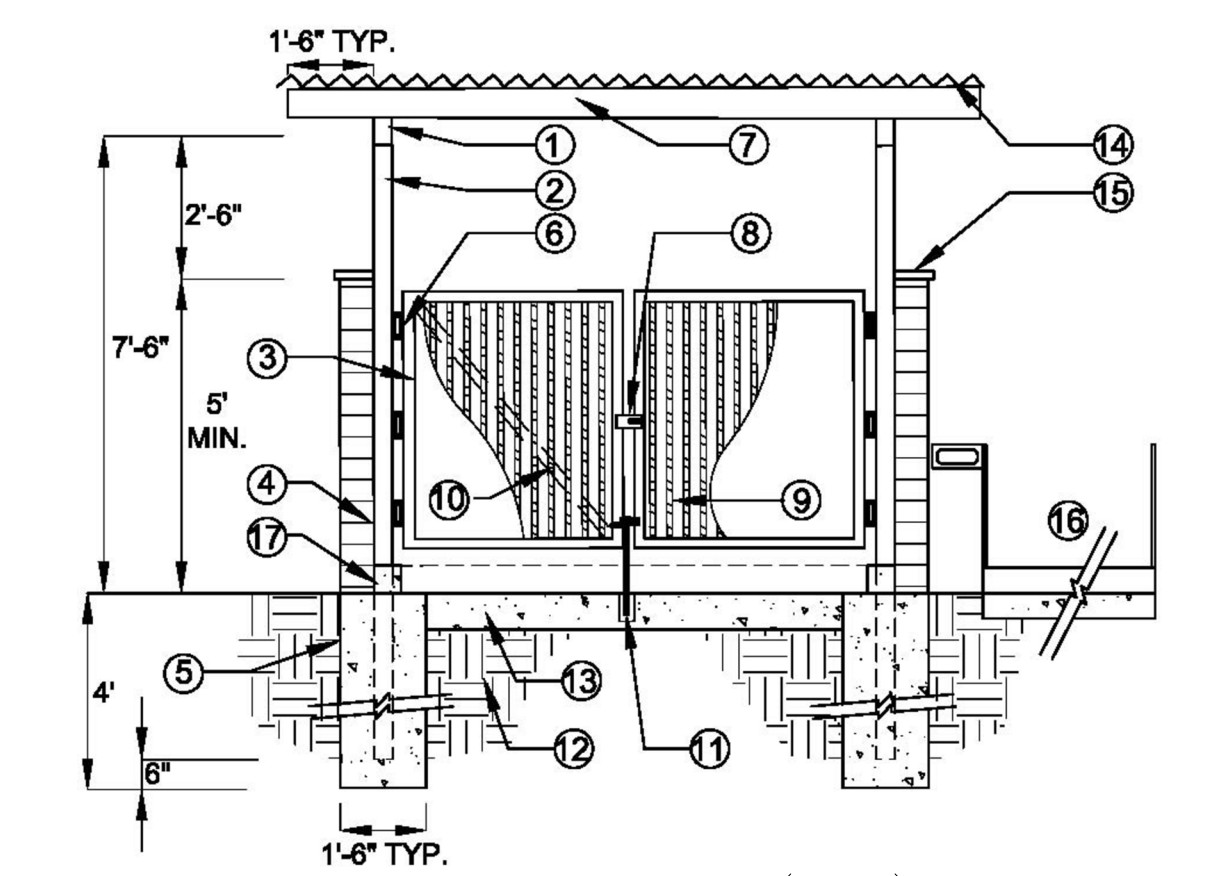
PREPARED BY:
ueg
 united engineering group
 10601 Church Street
 Suite 124
 Rancho Cucamonga, CA 91730
 Phone: 909.466.9240
 www.unitedeng.com
 CHRISTOPHER F. LENZ R.C.E. 63001 DATE

CITY OF PERRIS
 PRECISE GRADING PLANS
 GRADING PLAN
 W.O.: xxxxxxxx
 PERRIS FILE NO: P8-xxx
 OF 1 SHEETS

WDID No. xxxxxxxxxxxx





ROOF DRAIN LOCATION DETAIL
NTS

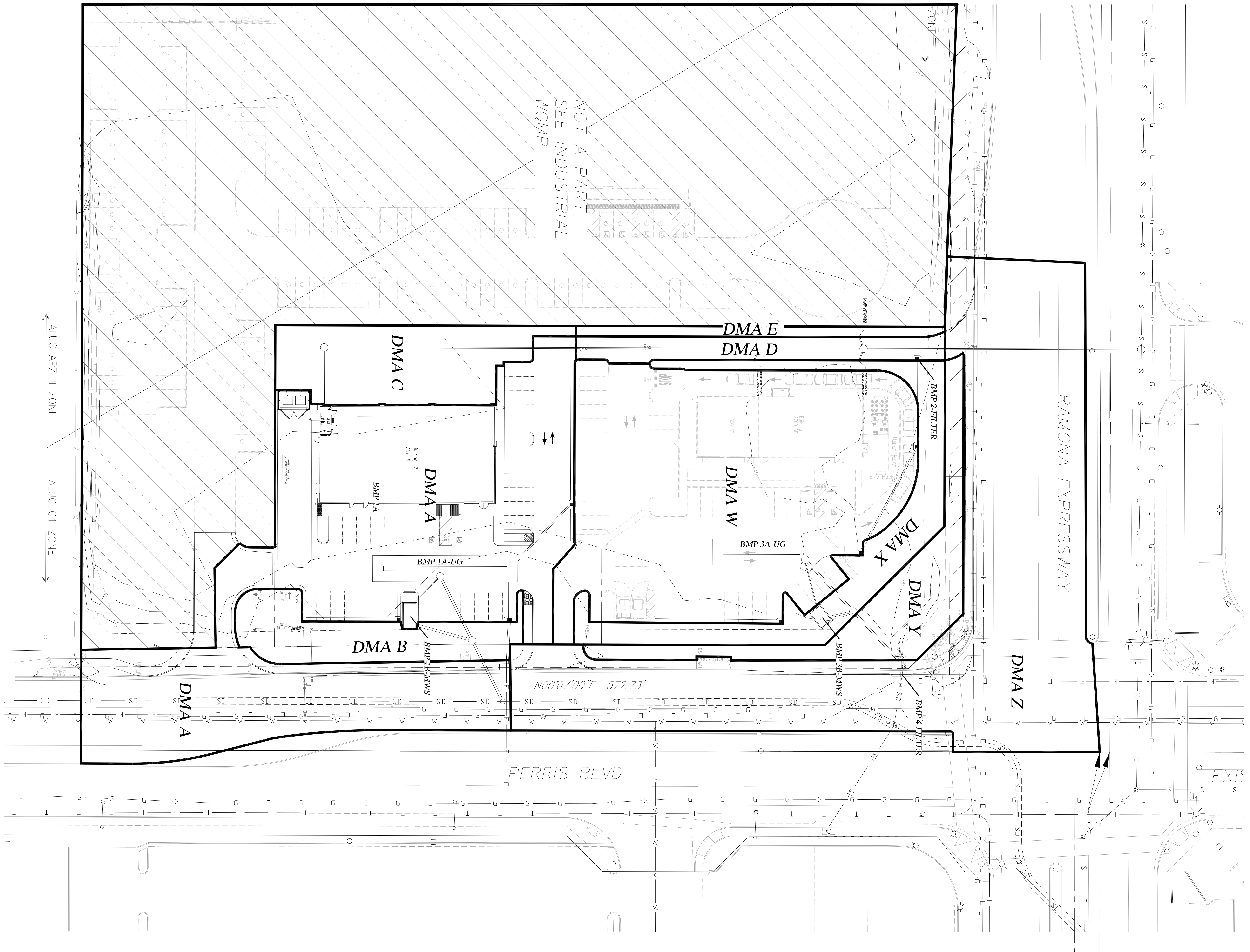


TRASH ENCLOSURE COVER (TYP.) NOTE 7
N.T.S.

- TRASH ENCLOSURE COVER NOTES:
1. 4-INCH X 6-INCH METAL BEAM POWDER COATED
 2. 4-INCH X 4-INCH TUBULAR STEEL POST. SET POST FLUSH TO WALL. GROUT FILL POST SOLID. PAINT WITH 2 COATS ZINC PRIMER & 2 COATS SATIN FINISH PAINT.
 3. GATE FRAME CONTINUOUS. ATTACH GATE FRAME TO STEEL POST WITH 3 HEAVY DUTY HINGES. CONTRACTOR SHALL SUPPLY SHOP DRAWINGS FOR APPROVAL PRIOR TO CONSTRUCTION.
 4. CMU WALL / REFER TO STRUCTURAL ENGINEERS SPECIFICATIONS FOR REINFORCEMENT.
 5. CONCRETE FOOTING / REFER TO STRUCTURAL ENGINEERS SPECIFICATIONS FOR REINFORCEMENT.
 6. HEAVY DUTY HINGES.
 7. METAL TRELLIS POWDER COATED (OR 2 COATS ZINC PRIMER & 2 COATS SATIN FINISH PAINT); COLOR TO BE SELECTED / REFER TO SHOP DRAWINGS FOR ROOF FRAMING.
 8. 3-INCH X 8-INCH X 1/4-INCH THICK GALVANIZED STEEL SJOP PLATE AND LOCKABLE KEEPER. WELD TO GATE FRAME - AS SHOWN / CONTRACTOR SHALL SUBMIT SHOP DRAWINGS FOR APPROVAL.
 9. MINI-V-BEAM 26 GAUGE WITH ENDURA CLAD FINISH AS MANUFACTURED BY ASC PACIFIC INC. OR APPROVED EQUAL. SPOT WELD TO ANGLE FRAME (CONTRACTOR TO SUBMIT SHOP DRAWINGS).
 10. 9-INCH X 1/2-INCH GALVANIZED STEEL DIAGONAL CROSS BRACE / FILLET WELD TO FRAME AND SPOT WELD TO MINI-V-BEAM (AT BACK OF GATE).
 11. HEAVY DUTY DROP CRANE BOLT. ATTACH TO GATE FRAME. SET 1-8 INCHES LONG X 1-INCH O.D. GALVANIZED PIPE SLEEVE TO ACCEPT BOLT. 'STANLY' CD 10009-18 INCHES OR APPROVED EQUAL.
 12. COMPACTED SUBGRADE PER GEOTECHNICAL REPORT.
 13. 6-INCH THICK PCC CONCRETE PAD WITH 6 X 6 X 10 WWM.
 14. METAL ROOF: CORRUGATED STEEL - BERRIDGE LEAD-COPE STRAIGHT S-DECK / INSTALL PER MANUFACTURERS SPECIFICATIONS.
 15. 8-INCH X 2-INCH X 16-INCH CMU CAP TO MATCH WALL COLOR.
 16. DISABLED ACCESSIBLE RAMP AND HANDRAIL IF REQUIRED.
 17. CONCRETE CURB
- NOTES
- A. CONCRETE FOOTING TO ACHIEVE 4300 PSI @ 28 DAYS.
 - B. TRASH BINS - SIZE AND NUMBER AS REQUIRED BY CITY.

BGR NO. XXXXXX WDID: XXXXXX

SEAL-ENGINEER 	 united engineering group 8885 Haven Avenue - Suite 195 Rancho Cucamonga, CA 91730 Phone: 909.466.9240 www.unitedeng.com	BENCH MARK: BOLT AND WASHER ILLEGIBLE, AT THE CENTERLINE INTERSECTION OF MARKHAM STREET AND PERRIS BOULEVARD, RIVERSIDE COUNTY BENCHMARK NUMBER BM-CSA4 AND RCM81. ELEVATION 1455.224	DPR XX-XXXXX I.P. No. XXXXXX PERRIS, CA, 92571 POST CONSTRUCTION BMP SITE PLAN SWC RAMONA & PERRIS DPR XX-XXXXX DETAILS AND SECTIONS
PREPARED UNDER THE DIRECTION OF: CHRISTOPHER F. LENZ 63001 DATE: _____ REGISTRATION EXPIRES 6-30-26		SHEET NO. <u>2</u> OF <u>5</u> SHEETS	FOR: PACIFIC DEVELOPMENT PARTNERS, LLC W.O. CITY FILE NO. DPR XX-XXXXX



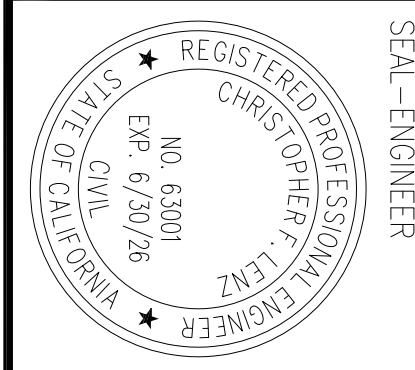
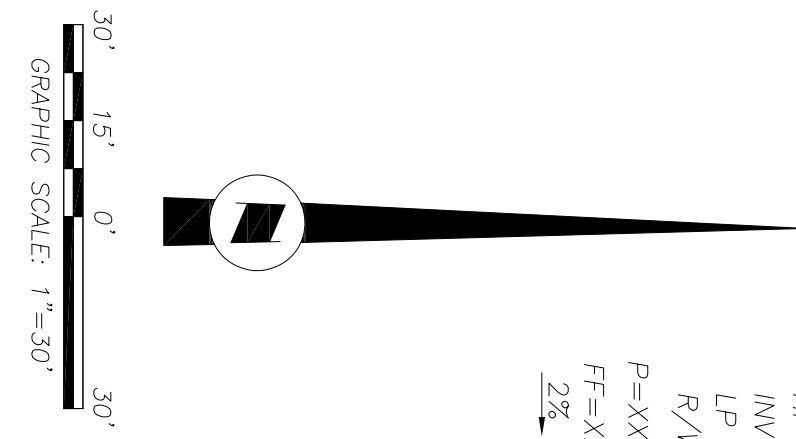
LEGEND/ABBREVIATION

- CF CURB FACE
- FG FINISH GRADE
- FF FINISHED FLOOR
- FL FLOW LINE
- GB GRADE BREAK
- HP HIGH POINT
- INV INVERT
- LP LOW POINT
- R/W RIGHT-OF-WAY
- P=XXX PAD ELEVATION
- FT=XXX FINISH FLOOR ELEVATION
- Z% DIRECTION OF DRAINAGE/GRADE

- TC TOP OF CURB
- SD STORM DRAIN
- R PROPERTY LINE
- TRP PEDESTRIAN TYPICAL
- EXISTING FIRE HYDRANT
- WATER VALVE
- STREET LIGHT
- PROPOSED STORM DRAIN LINE
- EXISTING CONTOUR

DMA AREA	[AC]	2YR 24HR FLOW [CFS] - QBMP	[CF] - VBMP	BMP
A	1.05	0.2	2,045	1A
B	0.18			1B
C	0.13			2
D	0.08			3A
E	0.04			3B
W	0.27	0.1	1,495	
X	0.19			
Y	0.17			
Z	1.11	0.2	2,118	4

BMP	DESCRIPTION
1A	CONTECH UNDERGROUND STORAGE 21'x98' FOOTPRINT
1B	CONTECH 8'x16' MODULAR WETLAND SYSTEM
2	FLOODARD CATCH BASIN FILTER INSERT
3A	CONTECH UNDERGROUND STORAGE 21'x70' FOOTPRINT
3B	CONTECH 8'x12' MODULAR WETLAND SYSTEM
4	FLOODARD CATCH BASIN FILTER INSERT



SEAL-ENGINEER
 REGISTERED PROFESSIONAL ENGINEER
 CHRISTOPHER F. LENZ
 NO. 63001
 EXP. 6/30/26
 STATE OF CALIFORNIA
 CIVIL

PREPARED UNDER THE DIRECTION OF:
 CHRISTOPHER F. LENZ
 DATE: _____ REGISTRATION EXPIRES 6-30-26
 63001

8888 Haven Avenue - Suite 196
 Rancho Cucamonga, CA 91730
 Phone: 909.466.9240
 www.unitedeng.com

BENCH MARK:
 BOLT AND WASHER LEGIBLE AT THE
 INTERSECTION OF PERRIS BOULEVARD
 RIVERSIDE COUNTY BENCHMARK NUMBER
 BW-0544 AND RM081.
 ELEVATION 1455.224

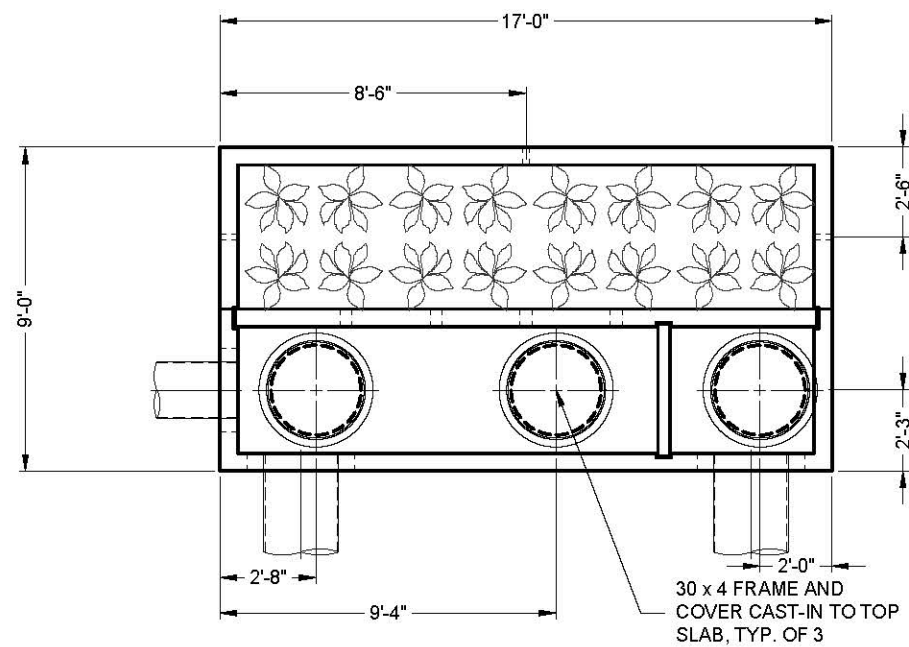
DPR XX-XXXXX I.P. No. XXXXXX SHEET NO.
 PERRIS CA, 92571
POST CONSTRUCTION BMP SITE PLAN
SWC RAMONA & PERRIS
DPR XX-XXXXX
WQMP - DMA MAP

FOR PACIFIC DEVELOPMENT W.O. CITY FILE NO. DPR XX-XXXXX PARTNERS, LLC

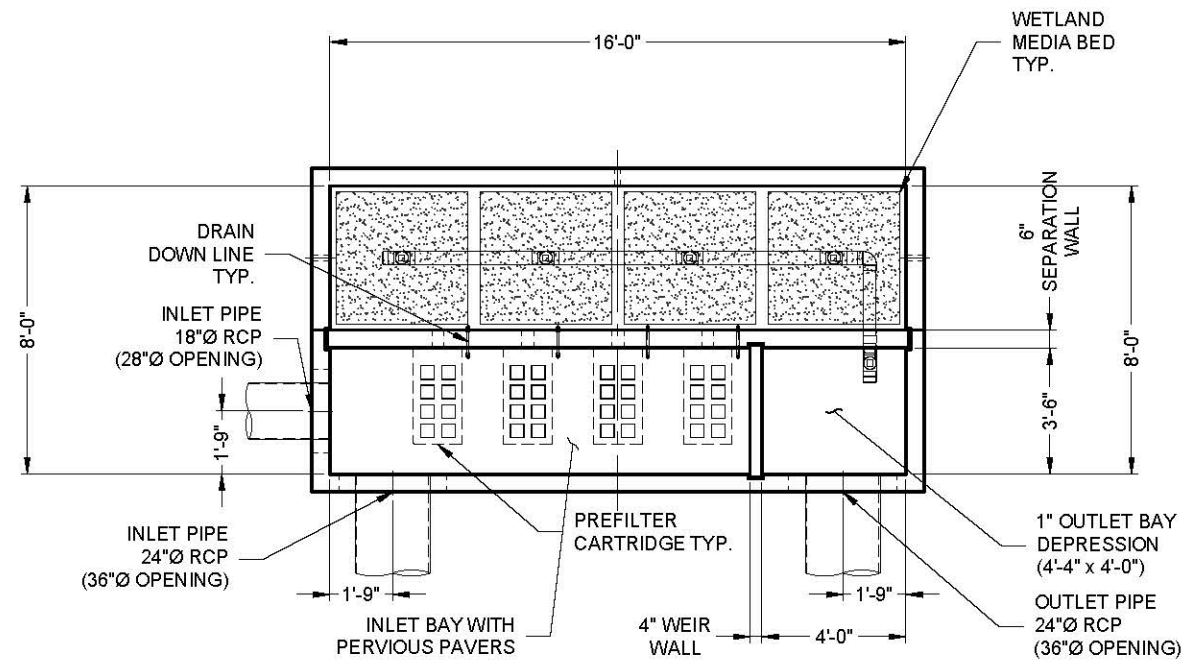
BGR NO. XXXXXX WDD: XXXXXX

4 OF 5 SHEETS

THIS DOCUMENT IS FOR INFORMATIONAL PURPOSES ONLY AND IS NOT A FINAL CONSTRUCTION CONTRACT



PLAN VIEW



PLAN VIEW
TOP SLAB NOT SHOWN

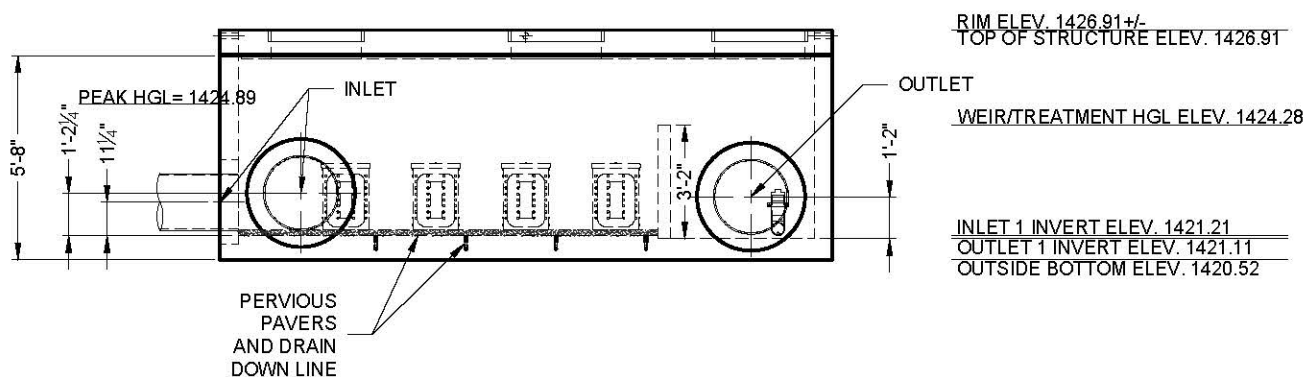
**SAMPLE ONLY -
DETAIL AT FWQP**

SITE DESIGN DATA	
WATER QUALITY FLOW (CFS)	0.40
PEAK FLOW RATE (CFS)	7.60
RETURN PERIOD (YRS)	100
MAXIMUM POLLUTANT DENSITY (PREFILTER) (GPM/SF)	3.0
PREFILTER LOADING RATE (GPM/SF)	1.75
WETLAND MEDIA LOADING RATE (GPM/SF)	1.00
MEDIA OPERATING HEAD (FT)	2.94
SURFACE LOADING	PEDESTRIAN
GROUNDWATER ELEVATION*	1421.11

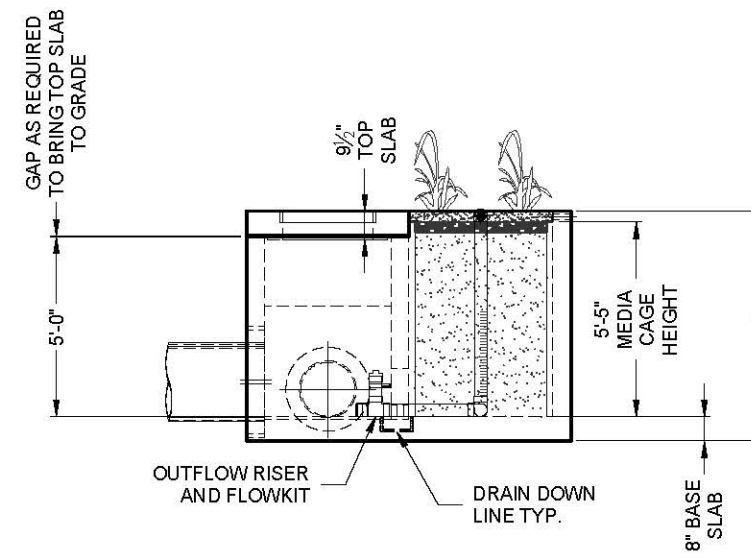
*GROUNDWATER ELEVATION IS ASSUMED. EOR TO PROVIDE IF KNOWN

STRUCTURE DETAILS	
NUMBER OF DELIVERED PIECES (DOES NOT INCLUDE GRADE RINGS/RISERS)	2
MAXIMUM FOOTPRINT	9.00' x 17.00'
DELIVERED HEAVIEST PICK*	41700 LB.
TOP SLAB	8675 LB.
BASE SECTION	41700 LB.

*BASE SECTION SHIPPED WITH INTERNAL WALLS INSTALLED



ELEVATION VIEW*



RIGHT END VIEW

RIM ELEV. 1426.91 +/-
TOP OF STRUCTURE ELEV. 1426.91
WEIR/TREATMENT HGL ELEV. 1424.28
INLET 1 INVERT ELEV. 1421.21
OUTLET 1 INVERT ELEV. 1421.11
OUTSIDE BOTTOM ELEV. 1420.52

*MEDIA CASTINGS, IF REQUIRED, NOT SHOWN

CONTECH
ENGINEERED SOLUTIONS LLC
A QUANTITY COMPANY

12901 SE 97th Avenue, Clackamas, OR 97015
800-548-4667 503-240-3393 800-561-1271 FAX



MODULAR WETLANDS MWSL0816OP - 806637-040
ANTELOPE & ELLIS TR30926
MENIFEE, CA
SITE DESIGNATION: MWS 7

PROJECT No.: 806637	SEQ. No.: 040	DATE: 03/07/25
DESIGNED: RLH	DRAWN: RLH	
CHECKED: RLH	APPROVED: RLH	
SHEET NO.: 1 OF 1		

WPSUM02TVC01M01 001KRETE NETWELRINPROJECTACTIVE806637-040-MWSL0816OP-CONFAB.DWG 3/11/2025 10:25 AM

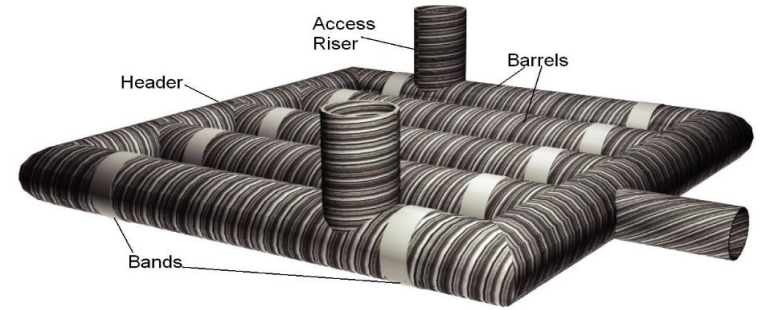
The design and information shown on this drawing is provided as a service to the project owner, engineer and contractor by Contech Engineered Solutions LLC ("Contech"). Neither this drawing, nor any part thereof, may be used, reproduced or modified in any manner without the prior written consent of Contech. Failure to comply is done at the user's own risk and Contech expressly disclaims any liability or responsibility for such use.

If discrepancies between the supplied information upon which the drawing is based and actual field conditions are encountered as site work progresses, these discrepancies must be reported to Contech immediately for re-evaluation of the design. Contech accepts no liability for designs based on missing, incomplete or inaccurate information supplied by others.

MARK	DATE	REVISION DESCRIPTION	BY

RVRSD
6505 / 000000
LAYOUT 6
MWS-L-8-16-L
20.71 TS
3.13 TIW

For design assistance, drawings,
and pricing send completed worksheet to:
dyods@contech-cpi.com



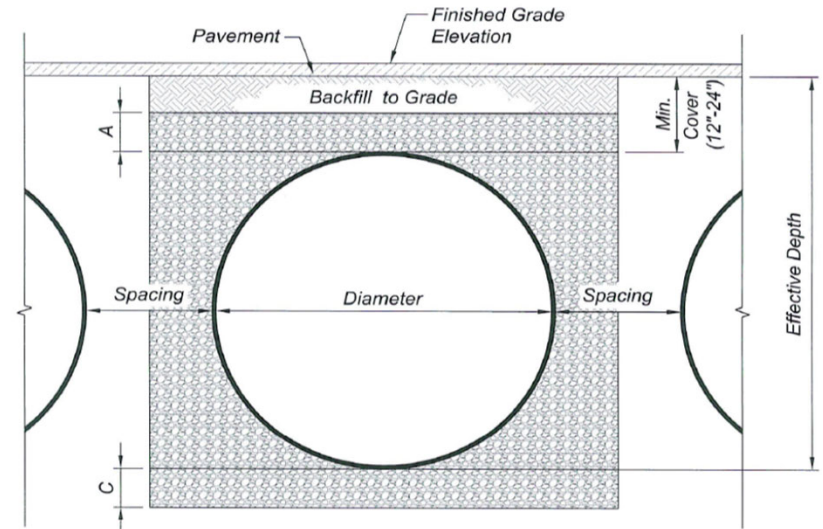
Project Summary

Date:	7/21/2025
Project Name:	SWC Ramona Perris - AutoZone
City / County:	Perris
State:	CA
Designed By:	CM
Company:	United Engineering
Telephone:	

Enter Information in
Blue Cells

Corrugated Metal Pipe Calculator

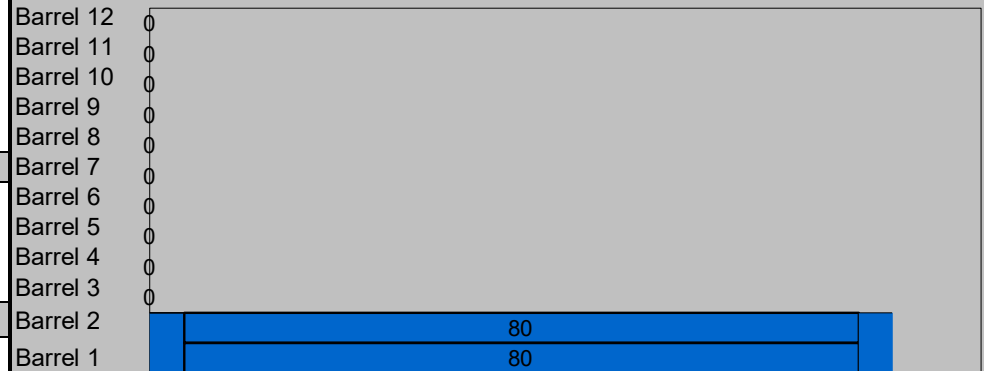
Storage Volume Required (cf):	10,731	38.48 ft ² Pipe Area
Limiting Width (ft):	30.00	
Invert Depth Below Asphalt (ft):	8.00	
Solid or Perforated Pipe:	Perforated	
Shape Or Diameter (in):	84	
Number Of Headers:	2	
Spacing between Barrels (ft):	3.00	
Stone Width Around Perimeter of System (ft):	2	
Depth A: Porous Stone Above Pipe (in):	6	
Depth C: Porous Stone Below Pipe (in):	6	
Stone Porosity (0 to 40%):	40	



System Sizing

Pipe Storage:	7,466 cf	
Porous Stone Storage:	3,599 cf	
Total Storage Provided:	11,065 cf	103.1% Of Required Storage
Number of Barrels:	2 barrels	
Length per Barrel:	80.0 ft	
Length Per Header:	17.0 ft	
Rectangular Footprint (W x L):	21. ft x 98. ft	

System Layout



CONTECH Materials

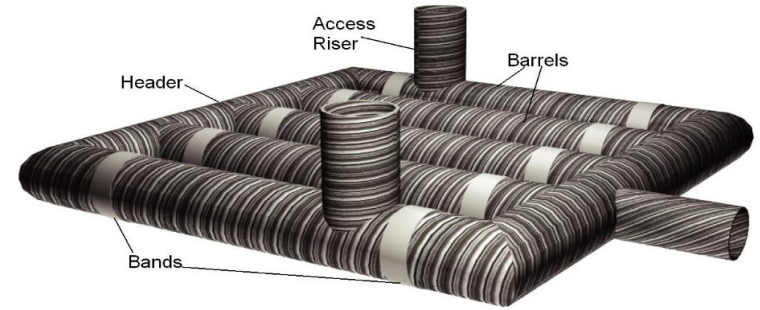
Total CMP Footage:	194 ft
Approximate Total Pieces:	10 pcs
Approximate Coupling Bands:	10 bands
Approximate Truckloads:	5 trucks

Construction Quantities**

Total Excavation:	610 cy
Porous Stone Backfill For Storage:	333 cy stone
Backfill to Grade Excluding Stone:	0 cy fill

**Construction quantities are approximate and should be verified upon final design

For design assistance, drawings,
and pricing send completed worksheet to:
dyods@contech-cpi.com



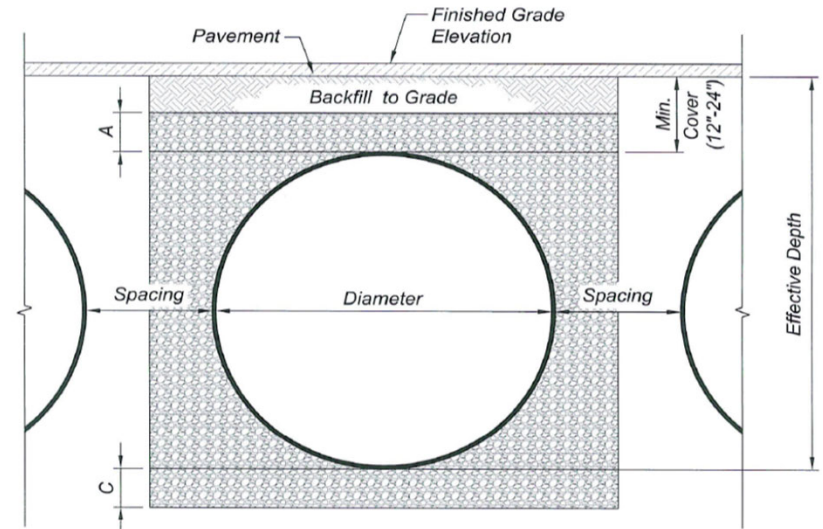
Project Summary

Date:	7/21/2025
Project Name:	SWC Ramona Perris - AutoZone
City / County:	Perris
State:	CA
Designed By:	CM
Company:	United Engineering
Telephone:	

Enter Information in
Blue Cells

Corrugated Metal Pipe Calculator

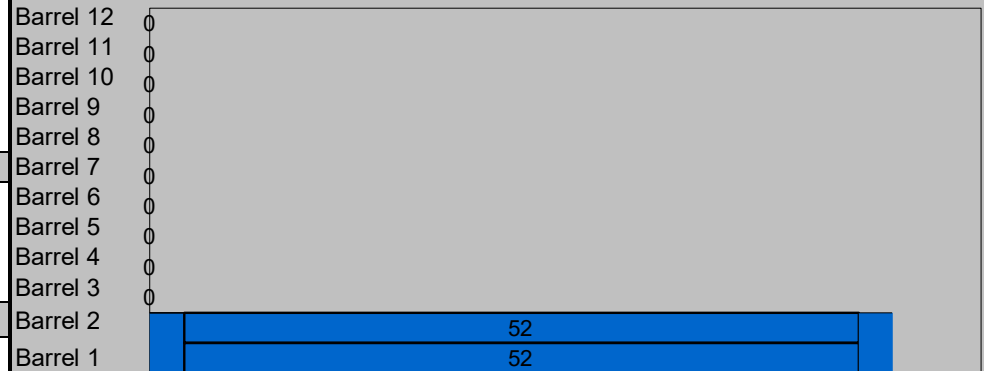
Storage Volume Required (cf):	7,575	38.48 ft ² Pipe Area
Limiting Width (ft):	30.00	
Invert Depth Below Asphalt (ft):	8.00	
Solid or Perforated Pipe:	Perforated	
Shape Or Diameter (in):	84	
Number Of Headers:	2	
Spacing between Barrels (ft):	3.00	
Stone Width Around Perimeter of System (ft):	2	
Depth A: Porous Stone Above Pipe (in):	6	
Depth C: Porous Stone Below Pipe (in):	6	
Stone Porosity (0 to 40%):	40	



System Sizing

Pipe Storage:	5,311 cf	
Porous Stone Storage:	2,580 cf	
Total Storage Provided:	7,891 cf	104.2% Of Required Storage
Number of Barrels:	2 barrels	
Length per Barrel:	52.0 ft	
Length Per Header:	17.0 ft	
Rectangular Footprint (W x L):	21. ft x 70. ft	

System Layout



CONTECH Materials

Total CMP Footage:	138 ft
Approximate Total Pieces:	8 pcs
Approximate Coupling Bands:	8 bands
Approximate Truckloads:	4 trucks

Construction Quantities**

Total Excavation:	436 cy
Porous Stone Backfill For Storage:	239 cy stone
Backfill to Grade Excluding Stone:	0 cy fill

**Construction quantities are approximate and should be verified upon final design