

**HYDROLOGY REPORT**  
for  
**CASE ROAD AND GOETZ ROAD**  
Located in the City of Perris  
County of Riverside

Prepared For:



764 Ramona Expressway Ste C  
Perris, CA 92571  
Tel: (951) 776-9300

Prepared by:



6879 Airport Drive  
Riverside, CA 92504  
Tel (951) 688-0241  
Fax (951) 688-0599

Job No. 10519  
November 28, 2023

---

## Table of Contents

1. Purpose.....	1
2. Project Description .....	1
A. Vicinity Map.....	1
3. Pre-Development Hydrology/Hydraulic Conditions.....	1
4. Post-Development Hydrology/Hydraulic Conditions .....	1
5. Method of Analysis.....	1
6. Summary of Finding.....	2
7. Conclusion .....	1
Pre-Development Onsite and Offsite 10 & 100 year (Rational Method).....	Section 1
Post-Development Onsite and Offsite 10 & 100 year (Rational Method).....	Section 2
Riverside County Plates .....	Section 3

### 1. Purpose

This Hydrology Report has been prepared in order to obtain entitlement approval of Tract 37803. Adkan Engineers has prepared this study to ensure that adequate size and proper operation of drainage facilities are incorporated into the Post-Development project site.

### 2. Project Description

The triangular-shaped site is located in the city of Perris, Riverside County, California. The site consists of approximately 11-acres located in the area of a currently vacant site area with no visual indication of previous structural improvements.

#### A. Vicinity Map

### 3. Pre-Development Hydrology

The vacant property is bounded to the south by the Ellis Avenue extension (unpaved) and Perris Valley Airport beyond; to the north/northeast by Commercial Street/Case Road, vacant land and commercial developments beyond; and to the west by Goetz Road and single-family residential homes beyond. The G Street extension (unpaved) traverses the central portion of the subject site in a north-south direction. Site topography slopes towards the southeast with surface drainage generally directed towards the southeast.

### 4. Post-Development Hydrology

The proposed site improvements will consist of a gas station, retail and storage facility. Associated parking, drive aisles, underground utilities (including gas storage tanks), concrete flatwork and landscaping are also anticipated for development. The site will propose on-site storm water treatment to treat the onsite runoff.

### 5. Method of Analysis

The site hydrology was based upon Riverside County Flood Control and Water Conservation District Hydrology Manual, from which pertinent soil and rainfall information was obtained.

Storm flows were determined by the "RATIONAL METHOD HYDROLOGY COMPUTER PROGRAM", Riverside County Flood Control & Water Conservation District 1978 Hydrology Manual, produced by Bondamin Engineering.

### 6. Conclusion

The hydrologic calculations provided herein substantiate the design of the Post-Development project and indicate the following:

- The Post-Development facilities demonstrate the ability to convey the 100 year storm events

Based on the Hydrology and Hydraulic analysis conducted and results shown herein and part thereof, it is our conclusion this project **does not** negatively impact the local community or watershed goals.

## **Section 1**

---

**Pre-Development 10 & 100 year Hydrology Offsite & Onsite  
(Rational Method)**

Riverside County Rational Hydrology Program

CIVILCADD/CIVILDESIGN Engineering Software,(c) 1989 - 2014 Version 9.0  
Rational Hydrology Study Date: 11/27/23 File:ex10.out

\*\*\*\*\* Hydrology Study Control Information \*\*\*\*\*

English (in-lb) Units used in input data file

-----  
Program License Serial Number 5006  
-----

Rational Method Hydrology Program based on  
Riverside County Flood Control & Water Conservation District 1978 hydrology manual  
Storm event (year) = 10.00 Antecedent Moisture Condition = 2  
2 year, 1 hour precipitation = 0.500(In.)  
100 year, 1 hour precipitation = 1.300(In.)  
Storm event year = 10.0  
Calculated rainfall intensity data:  
1 hour intensity = 0.829(In/Hr)  
Slope of intensity duration curve = 0.5000

\*\*\*\*\*  
Process from Point/Station 1.000 to Point/Station 2.000  
\*\*\*\* INITIAL AREA EVALUATION \*\*\*\*

-----  
Initial area flow distance = 451.000(Ft.)  
Top (of initial area) elevation = 1427.450(Ft.)  
Bottom (of initial area) elevation = 1424.000(Ft.)  
Difference in elevation = 3.450(Ft.)  
Slope = 0.00765 s(percent)= 0.76  
TC = k(0.530)\*[(length^3)/(elevation change)]^0.2  
Initial area time of concentration = 16.189 min.  
Rainfall intensity = 1.596(In/Hr) for a 10.0 year storm  
UNDEVELOPED (poor cover) subarea  
Runoff Coefficient = 0.761  
Decimal fraction soil group A = 0.000  
Decimal fraction soil group B = 0.500  
Decimal fraction soil group C = 0.500  
Decimal fraction soil group D = 0.000  
RI index for soil(AMC 2) = 82.00  
Pervious area fraction = 1.000; Impervious fraction = 0.000  
Initial subarea runoff = 5.864(CFS)  
Total initial stream area = 4.830(Ac.)  
Pervious area fraction = 1.000

\*\*\*\*\*  
Process from Point/Station 2.000 to Point/Station 3.000  
\*\*\*\* NATURAL CHANNEL TIME + SUBAREA FLOW ADDITION \*\*\*\*

-----  
Top of natural channel elevation = 1424.000(Ft.)  
End of natural channel elevation = 1417.600(Ft.)  
Length of natural channel = 729.000(Ft.)  
Estimated mean flow rate at midpoint of channel = 9.184(CFS)  
Natural valley channel type used  
L.A. County flood control district formula for channel velocity:  
Velocity(ft/s) = (7 + 8(q(English Units)^.352)(slope^0.5)  
Velocity using mean channel flow = 2.29(Ft/s)  
Correction to map slope used on extremely rugged channels with  
drops and waterfalls (Plate D-6.2)  
Normal channel slope = 0.0088  
Corrected/adjusted channel slope = 0.0088  
Travel time = 5.30 min. TC = 21.49 min.  
Adding area flow to channel  
UNDEVELOPED (poor cover) subarea  
Runoff coefficient = 0.743  
Decimal fraction soil group A = 0.000  
Decimal fraction soil group B = 0.500  
Decimal fraction soil group C = 0.500  
Decimal fraction soil group D = 0.000  
RI index for soil(AMC 2) = 82.00  
Pervious area fraction = 1.000; Impervious fraction = 0.000  
Rainfall intensity = 1.385(In/Hr) for a 10.0 year storm  
Subarea runoff = 5.631(CFS) for 5.470(Ac.)  
Total runoff = 11.494(CFS) Total area = 10.300(Ac.)  
End of computations, total study area = 10.30 (Ac.)  
The following figures maybe used for a unit hydrograph study of the same area.  
Area averaged pervious area fraction(Ap) = 1.000  
Area averaged RI index number = 82.0

Riverside County Rational Hydrology Program

CIVILCADD/CIVILDESIGN Engineering Software,(c) 1989 - 2014 Version 9.0  
Rational Hydrology Study Date: 11/27/23 File:ex.out

\*\*\*\*\* Hydrology Study Control Information \*\*\*\*\*

English (in-lb) Units used in input data file

-----  
Program License Serial Number 5006

-----  
Rational Method Hydrology Program based on  
Riverside County Flood Control & Water Conservation District 1978 hydrology manual  
Storm event (year) = 100.00 Antecedent Moisture Condition = 2  
2 year, 1 hour precipitation = 0.500(In.)  
100 year, 1 hour precipitation = 1.300(In.)  
Storm event year = 100.0  
Calculated rainfall intensity data:  
1 hour intensity = 1.300(In/Hr)  
Slope of intensity duration curve = 0.5000

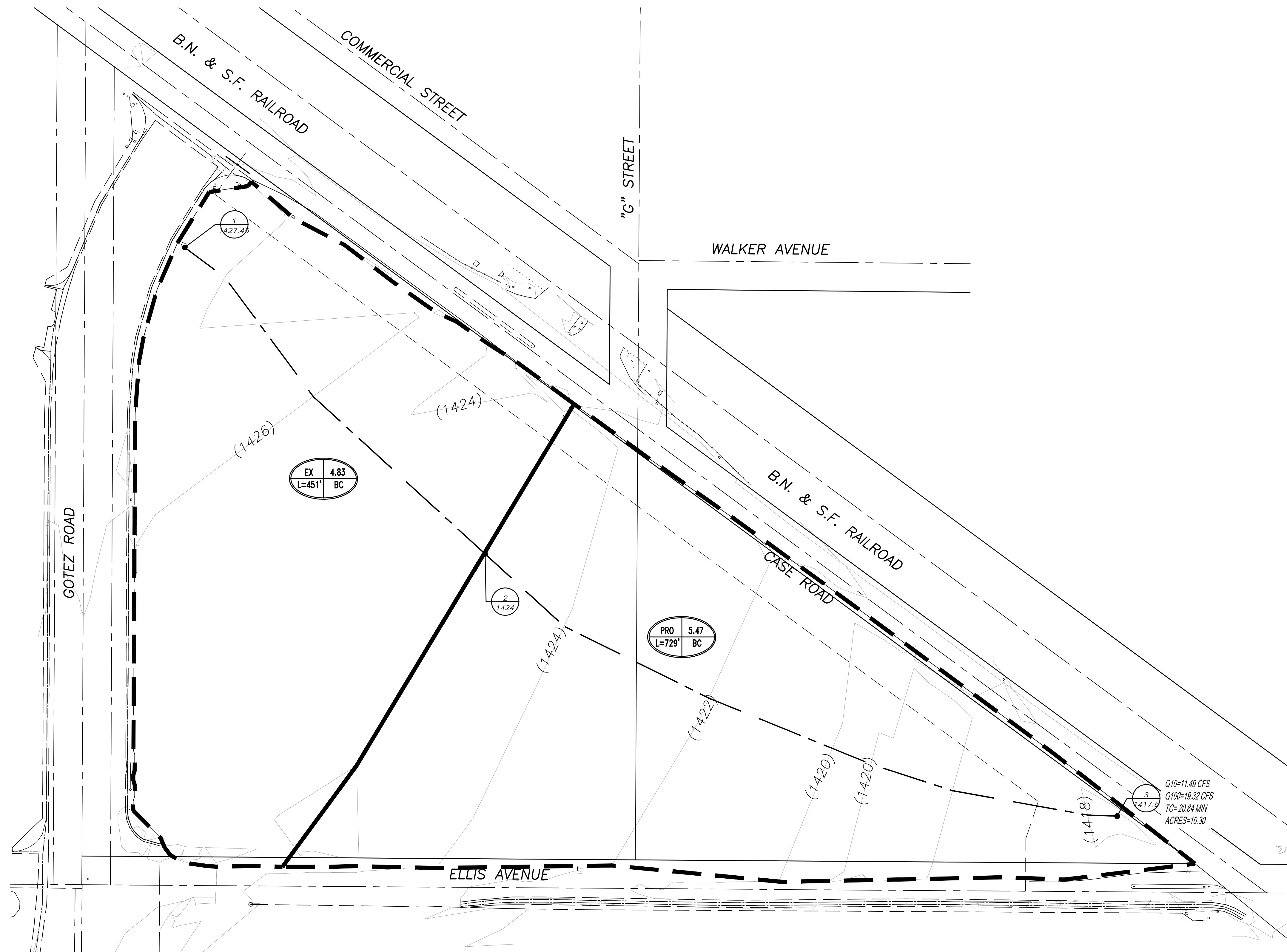
+++++  
Process from Point/Station 1.000 to Point/Station 2.000  
\*\*\*\* INITIAL AREA EVALUATION \*\*\*\*

-----  
Initial area flow distance = 451.000(Ft.)  
Top (of initial area) elevation = 1427.450(Ft.)  
Bottom (of initial area) elevation = 1424.000(Ft.)  
Difference in elevation = 3.450(Ft.)  
Slope = 0.00765 s(percent)= 0.76  
TC = k(0.530)\*[(length^3)/(elevation change)]^0.2  
Initial area time of concentration = 16.189 min.  
Rainfall intensity = 2.503(In/Hr) for a 100.0 year storm  
UNDEVELOPED (poor cover) subarea  
Runoff Coefficient = 0.806  
Decimal fraction soil group A = 0.000  
Decimal fraction soil group B = 0.500  
Decimal fraction soil group C = 0.500  
Decimal fraction soil group D = 0.000  
RI index for soil(AMC 2) = 82.00  
Pervious area fraction = 1.000; Impervious fraction = 0.000  
Initial subarea runoff = 9.740(CFS)  
Total initial stream area = 4.830(Ac.)  
Pervious area fraction = 1.000

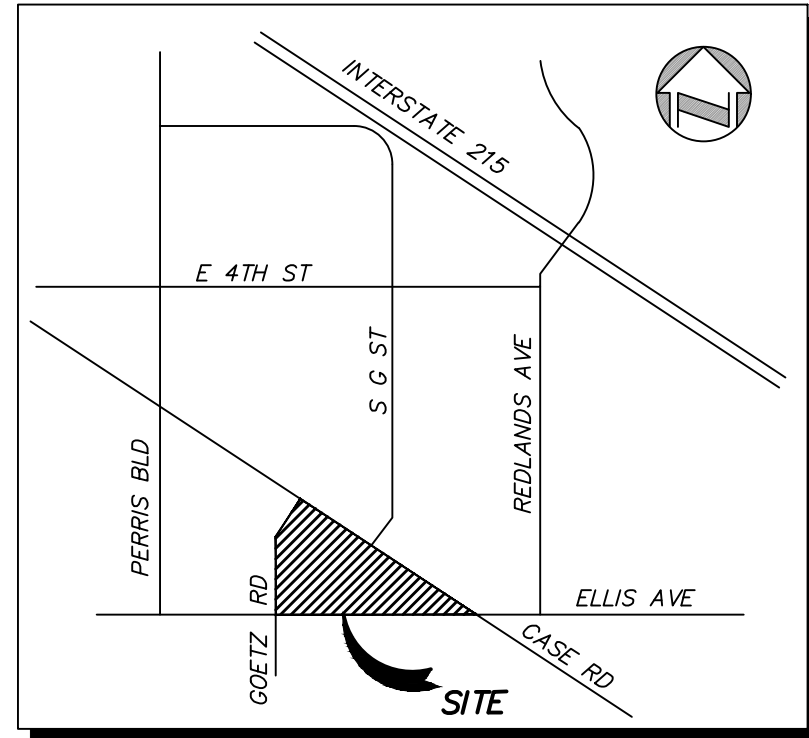
+++++  
Process from Point/Station 2.000 to Point/Station 3.000  
\*\*\*\* NATURAL CHANNEL TIME + SUBAREA FLOW ADDITION \*\*\*\*

-----  
Top of natural channel elevation = 1424.000(Ft.)  
End of natural channel elevation = 1417.600(Ft.)  
Length of natural channel = 729.000(Ft.)  
Estimated mean flow rate at midpoint of channel = 15.256(CFS)  
Natural valley channel type used  
L.A. County flood control district formula for channel velocity:  
Velocity(ft/s) = (7 + 8(q(English Units)^.352)(slope^0.5)  
Velocity using mean channel flow = 2.61(Ft/s)  
Correction to map slope used on extremely rugged channels with  
drops and waterfalls (Plate D-6.2)  
Normal channel slope = 0.0088  
Corrected/adjusted channel slope = 0.0088  
Travel time = 4.65 min. TC = 20.84 min.  
Adding area flow to channel  
UNDEVELOPED (poor cover) subarea  
Runoff Coefficient = 0.795  
Decimal fraction soil group A = 0.000  
Decimal fraction soil group B = 0.500  
Decimal fraction soil group C = 0.500  
Decimal fraction soil group D = 0.000  
RI index for soil(AMC 2) = 82.00  
Pervious area fraction = 1.000; Impervious fraction = 0.000  
Rainfall intensity = 2.206(In/Hr) for a 100.0 year storm  
Subarea runoff = 9.587(CFS) for 5.470(Ac.)  
Total runoff = 19.327(CFS) Total area = 10.300(Ac.)  
End of computations, total study area = 10.30 (Ac.)  
The following figures maybe used for a unit hydrograph study of the same area.  
Area averaged pervious area fraction(Ap) = 1.000  
Area averaged RI index number = 82.0

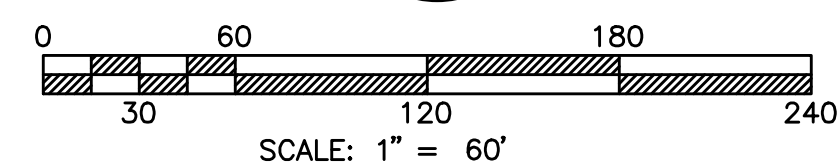
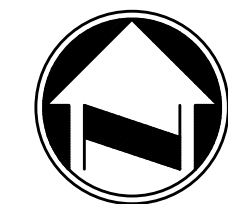
CITY OF PERRIS  
**PRE-DEVELOPMENT HYDROLOGY MAP**  
 CASE & GOETZ



THOMAS BRO. GUIDE PG. 807 GRID: H4



VICINITY MAP  
 (N.T.S.)  
 T4S R3W SEC 32 W



**LEGEND**

- NODE  
ELEV
- AREA ACRES  
LENGTH SOIL
- WATERSHED BOUNDARY
- FLOW PATH

CASE & GOETZ  
 PRE-DEVELOPMENT HYDROLOGY MAP  
 PREPARATION DATE : NOVEMBER 2023  
 PLANS PREPARED BY:  
**adkan**  
**ENGINEERS**  
 Civil Engineering • Surveying • Planning  
 6879 Airport Drive, Riverside, CA 92504  
 Tel:(951) 688-0241 • Fax:(951) 688-0599

## **Section 2**

---

**Post-Development 10 & 100 year Hydrology Offsite & Onsite  
(Rational Method)**

Riverside County Rational Hydrology Program

CIVILCADD/CIVILDESIGN Engineering Software,(c) 1989 - 2014 Version 9.0  
Rational Hydrology Study Date: 11/27/23 File:PRO10.out

\*\*\*\*\* Hydrology Study Control Information \*\*\*\*\*

English (in-lb) Units used in input data file

-----  
Program License Serial Number 5006  
-----

Rational Method Hydrology Program based on  
Riverside County Flood Control & Water Conservation District 1978 hydrology manual  
Storm event (year) = 10.00 Antecedent Moisture Condition = 2  
2 year, 1 hour precipitation = 0.500(In.)  
100 year, 1 hour precipitation = 1.300(In.)  
Storm event year = 10.0  
Calculated rainfall intensity data:  
1 hour intensity = 0.829(In/Hr)  
Slope of intensity duration curve = 0.5000

+++++  
Process from Point/Station 1.000 to Point/Station 2.000  
\*\*\*\* INITIAL AREA EVALUATION \*\*\*\*

-----  
Initial area flow distance = 435.000(Ft.)  
Top (of initial area) elevation = 1426.750(Ft.)  
Bottom (of initial area) elevation = 1424.600(Ft.)  
Difference in elevation = 2.150(Ft.)  
Slope = 0.00494 s(percent)= 0.49  
TC = k(0.300)\*[(length^3)/(elevation change)]^0.2  
Initial area time of concentration = 9.857 min.  
Rainfall intensity = 2.046(In/Hr) for a 10.0 year storm  
COMMERCIAL subarea type  
Runoff Coefficient = 0.875  
Decimal fraction soil group A = 0.000  
Decimal fraction soil group B = 0.500  
Decimal fraction soil group C = 0.500  
Decimal fraction soil group D = 0.000  
RI index for soil(AMC 2) = 62.50  
Pervious area fraction = 0.100; Impervious fraction = 0.900  
Initial subarea runoff = 5.601(CFS)  
Total initial stream area = 3.130(Ac.)  
Pervious area fraction = 0.100

+++++  
Process from Point/Station 2.000 to Point/Station 3.000  
\*\*\*\* NATURAL CHANNEL TIME + SUBAREA FLOW ADDITION \*\*\*\*

-----  
Top of natural channel elevation = 1424.600(Ft.)  
End of natural channel elevation = 1419.000(Ft.)  
Length of natural channel = 746.000(Ft.)  
Estimated mean flow rate at midpoint of channel = 10.861(CFS)  
Natural valley channel type used  
L.A. County flood control district formula for channel velocity:  
Velocity(ft/s) = (7 + 8(q(English Units)^.352)(slope^0.5)  
Velocity using mean channel flow = 2.21(Ft/s)  
Correction to map slope used on extremely rugged channels with  
drops and waterfalls (Plate D-6.2)  
Normal channel slope = 0.0075  
Corrected/adjusted channel slope = 0.0075  
Travel time = 5.62 min. TC = 15.48 min.  
Adding area flow to channel  
COMMERCIAL subarea type  
Runoff Coefficient = 0.870  
Decimal fraction soil group A = 0.000  
Decimal fraction soil group B = 0.500  
Decimal fraction soil group C = 0.500  
Decimal fraction soil group D = 0.000  
RI index for soil(AMC 2) = 62.50  
Pervious area fraction = 0.100; Impervious fraction = 0.900  
Rainfall intensity = 1.632(In/Hr) for a 10.0 year storm  
Subarea runoff = 8.354(CFS) for 5.880(Ac.)  
Total runoff = 13.955(CFS) Total area = 9.010(Ac.)  
End of computations, total study area = 9.01 (Ac.)  
The following figures maybe used for a unit hydrograph study of the same area.  
Area averaged pervious area fraction(Ap) = 0.100  
Area averaged RI index number = 62.5

Riverside County Rational Hydrology Program

CIVILCADD/CIVILDESIGN Engineering Software,(c) 1989 - 2014 Version 9.0  
Rational Hydrology Study Date: 11/27/23 File:PRO.out

\*\*\*\*\* Hydrology Study Control Information \*\*\*\*\*  
English (in-lb) Units used in input data file

-----  
Program License Serial Number 5006  
-----

Rational Method Hydrology Program based on  
Riverside County Flood Control & Water Conservation District 1978 hydrology manual  
Storm event (year) = 100.00 Antecedent Moisture Condition = 2  
2 year, 1 hour precipitation = 0.500(In.)  
100 year, 1 hour precipitation = 1.300(In.)  
Storm event year = 100.0  
Calculated rainfall intensity data:  
1 hour intensity = 1.300(In/Hr)  
Slope of intensity duration curve = 0.5000

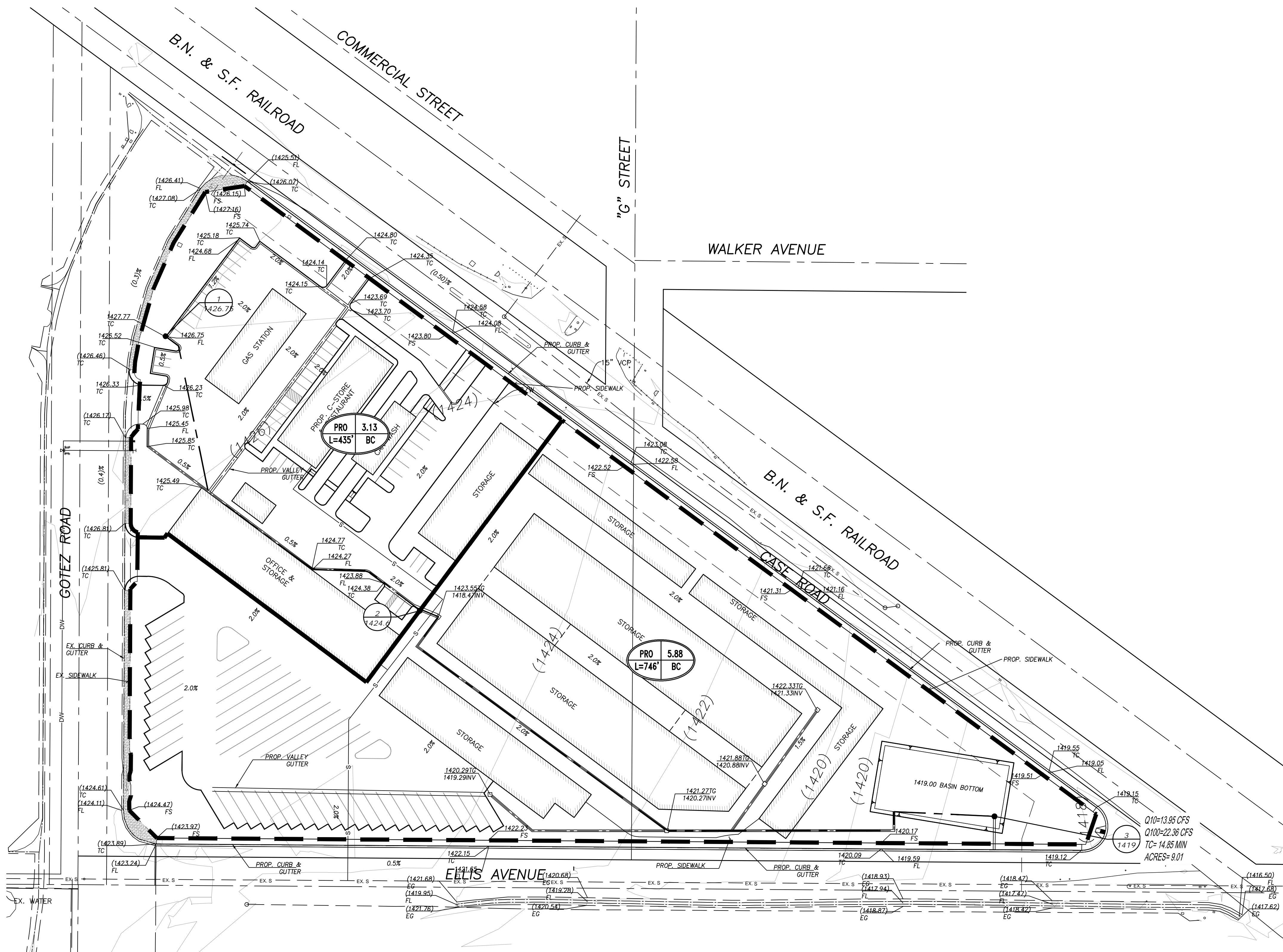
\*\*\*\*\*  
Process from Point/Station 1.000 to Point/Station 2.000  
\*\*\*\* INITIAL AREA EVALUATION \*\*\*\*  
-----

Initial area flow distance = 435.000(Ft.)  
Top (of initial area) elevation = 1426.750(Ft.)  
Bottom (of initial area) elevation = 1424.600(Ft.)  
Difference in elevation = 2.150(Ft.)  
Slope = 0.00494 s(percent)= 0.49  
TC = k(0.300)\*[(length^3)/(elevation change)]^0.2  
Initial area time of concentration = 9.857 min.  
Rainfall intensity = 3.207(In/Hr) for a 100.0 year storm  
COMMERCIAL subarea type  
Runoff Coefficient = 0.882  
Decimal fraction soil group A = 0.000  
Decimal fraction soil group B = 0.500  
Decimal fraction soil group C = 0.500  
Decimal fraction soil group D = 0.000  
RI index for soil(AMC 2) = 62.50  
Pervious area fraction = 0.100; Impervious fraction = 0.900  
Initial subarea runoff = 8.855(CFS)  
Total initial stream area = 3.130(Ac.)  
Pervious area fraction = 0.100

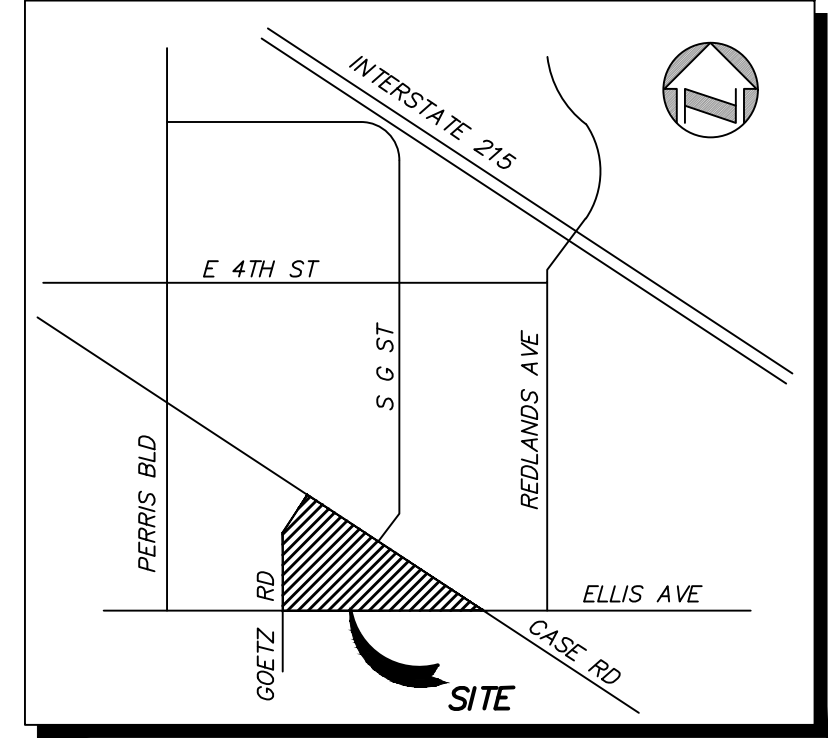
\*\*\*\*\*  
Process from Point/Station 2.000 to Point/Station 3.000  
\*\*\*\* NATURAL CHANNEL TIME + SUBAREA FLOW ADDITION \*\*\*\*  
-----

Top of natural channel elevation = 1424.600(Ft.)  
End of natural channel elevation = 1419.000(Ft.)  
Length of natural channel = 746.000(Ft.)  
Estimated mean flow rate at midpoint of channel = 17.172(CFS)  
Natural valley channel type used  
L.A. County flood control district formula for channel velocity:  
Velocity(ft/s) = (7 + 8(q(English Units)^.352)(slope^0.5)  
Velocity using mean channel flow = 2.49(Ft/s)  
Correction to map slope used on extremely rugged channels with  
drops and waterfalls (Plate D-6.2)  
Normal channel slope = 0.0075  
Corrected/adjusted channel slope = 0.0075  
Travel time = 4.99 min. TC = 14.85 min.  
Adding area flow to channel  
COMMERCIAL subarea type  
Runoff Coefficient = 0.879  
Decimal fraction soil group A = 0.000  
Decimal fraction soil group B = 0.500  
Decimal fraction soil group C = 0.500  
Decimal fraction soil group D = 0.000  
RI index for soil(AMC 2) = 62.50  
Pervious area fraction = 0.100; Impervious fraction = 0.900  
Rainfall intensity = 2.613(In/Hr) for a 100.0 year storm  
Subarea runoff = 13.506(CFS) for 5.880(Ac.)  
Total runoff = 22.361(CFS) Total area = 9.010(Ac.)  
End of computations, total study area = 9.01 (Ac.)  
The following figures maybe used for a unit hydrograph study of the same area.  
Area averaged pervious area fraction(Ap) = 0.100  
Area averaged RI index number = 62.5

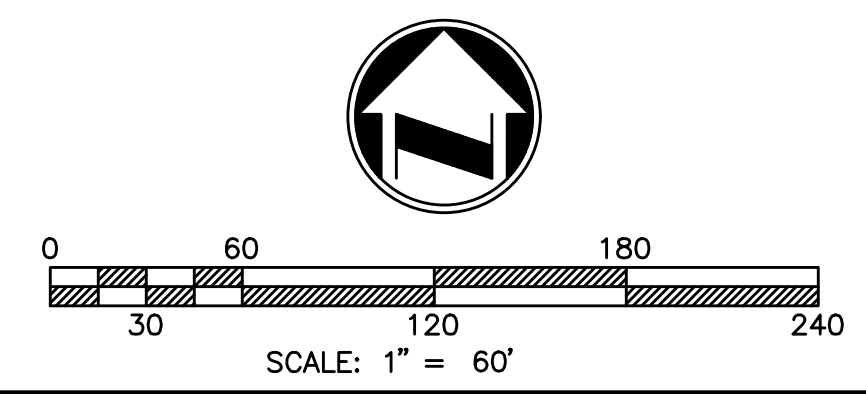
# CITY OF PERRIS POST-DEVELOPMENT HYDROLOGY MAP CASE & GOETZ



THOMAS BRO. GUIDE PG. 807 GRID: H4



VICINITY MAP  
(N.T.S.)  
T4S R3W SEC 32 W



**LEGEND**

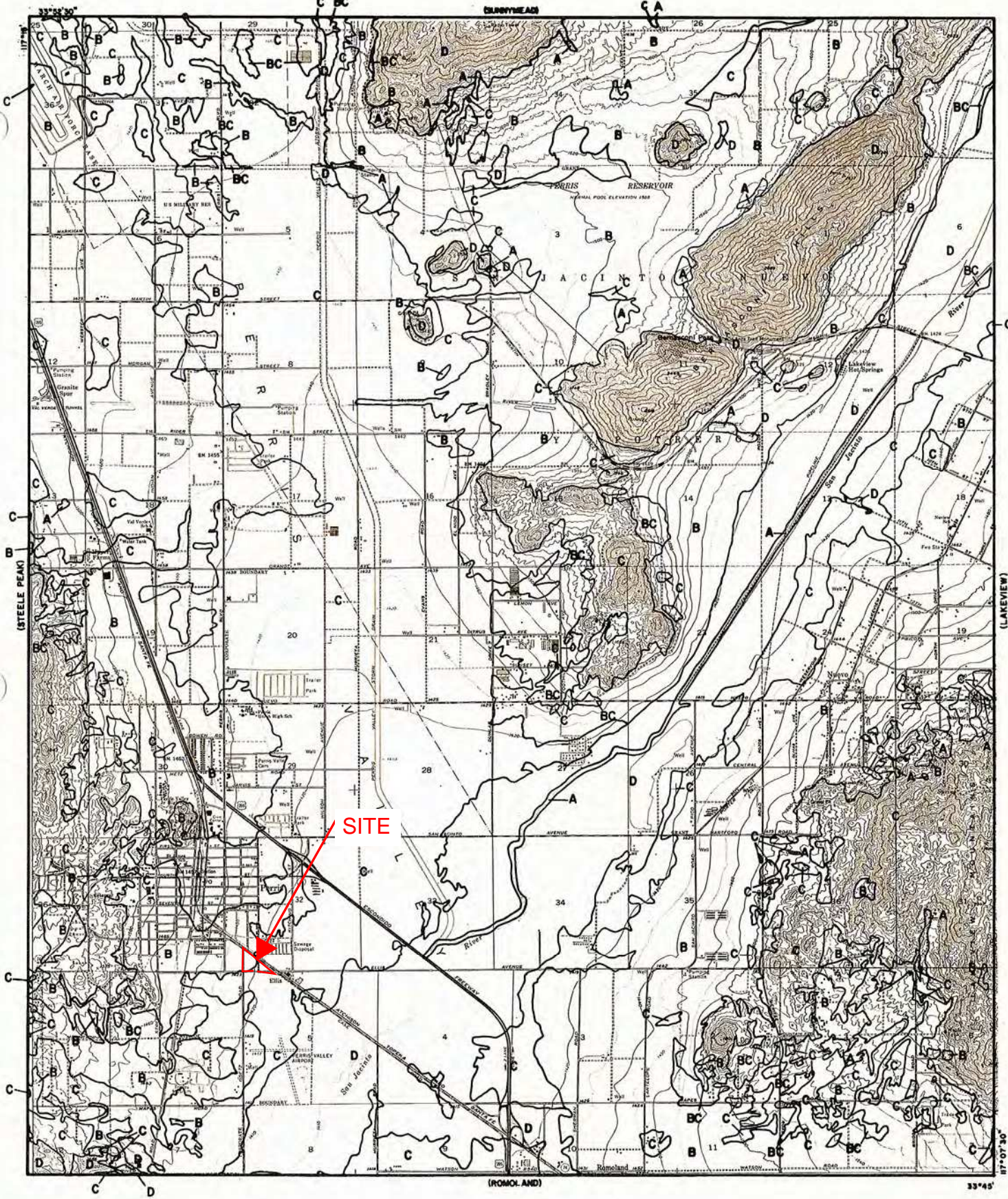
- NODE
- ELEV
- AREA ACRES
- LENGTH
- SOIL
- WATERSHED BOUNDARY
- FLOW PATH

CASE & GOETZ  
POST-DEVELOPMENT HYDROLOGY MAP  
PREPARATION DATE : NOVEMBER 2023  
PLANS PREPARED BY:  
**adkan ENGINEERS**  
Civil Engineering • Surveying • Planning  
6879 Airport Drive, Riverside, CA 92504  
Tel: (951) 688-0241 • Fax: (951) 688-0599

## Section 3

---

### Riverside County Plates



**LEGEND**

— SOILS GROUP BOUNDARY  
 A SOILS GROUP DESIGNATION

**RCFC & WCD**  
 HYDROLOGY MANUAL

0 FEET 5000

**HYDROLOGIC SOILS GROUP MAP**  
**FOR**  
**PERRIS**

**B&C**

RUNOFF INDEX NUMBERS OF HYDROLOGIC SOIL-COVER COMPLEXES FOR PERVIOUS AREAS-AMC II

Cover Type (3)	Quality of Cover (2)	Soil Group			
		A	B	C	D
<b><u>NATURAL COVERS -</u></b>					
Barren (Rockland, eroded and graded land)		78	86	91	93
Chaparrel, Broadleaf (Manzonita, ceanothus and scrub oak)	Poor	53	70	80	85
	Fair	40	63	75	81
	Good	31	57	71	78
Chaparrel, Narrowleaf (Chamise and redshank)	Poor	71	82	88	91
	Fair	55	72	81	86
Grass, Annual or Perennial	Poor	67	78	86	89
	Fair	50	69	79	84
	Good	38	61	74	80
Meadows or Cienegas (Areas with seasonally high water table, principal vegetation is sod forming grass)	Poor	63	77	85	88
	Fair	51	70	80	84
	Good	30	58	72	78
Open Brush (Soft wood shrubs - buckwheat, sage, etc.)	Poor	62	76	84	88
	Fair	46	66	77	83
	Good	41	63	75	81
Woodland (Coniferous or broadleaf trees predominate. Canopy density is at least 50 percent)	Poor	45	66	77	83
	Fair	36	60	73	79
	Good	28	55	70	77
Woodland, Grass (Coniferous or broadleaf trees with canopy density from 20 to 50 percent)	Poor	57	73	82	86
	Fair	44	65	77	82
	Good	33	58	72	79
<b><u>URBAN COVERS -</u></b>					
Residential or Commercial Landscaping (Lawn, shrubs, etc.)	Good	32	56	69	75
Turf (Irrigated and mowed grass)	Poor	58	74	83	87
	Fair	44	65	77	82
	Good	33	58	72	79
<b><u>AGRICULTURAL COVERS -</u></b>					
Fallow (Land plowed but not tilled or seeded)		76	85	90	92

**RCFC & WCD**  
HYDROLOGY MANUAL

RUNOFF INDEX NUMBERS  
FOR  
PERVIOUS AREA

ACTUAL IMPERVIOUS COVER

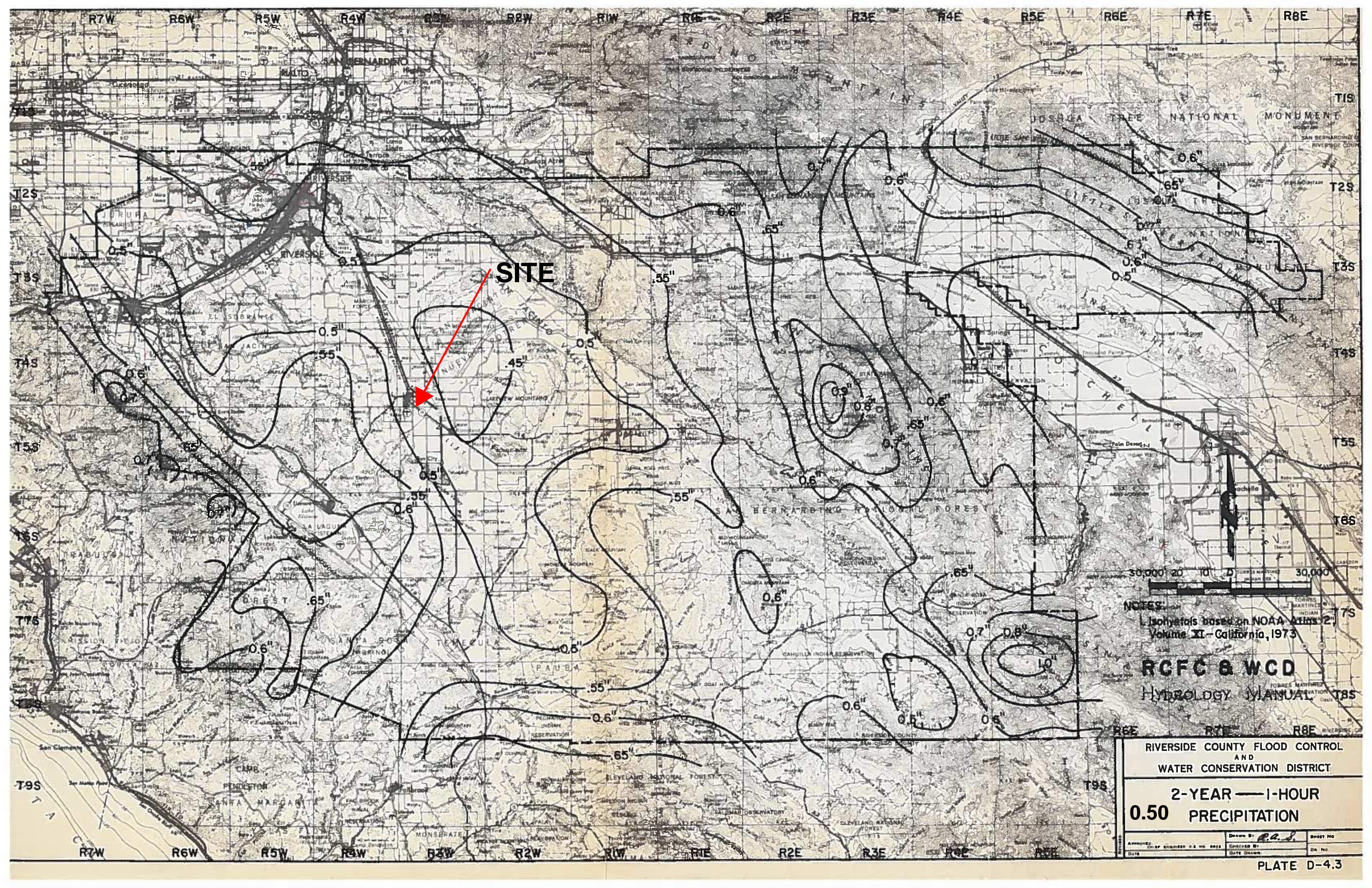
Land Use (1)	Range-Percent	Recommended Value For Average Conditions-Percent (2)
Natural or Agriculture	0 - 10	0
Single Family Residential: (3)		
40,000 S. F. (1 Acre) Lots	10 - 25	20
20,000 S. F. (½ Acre) Lots	30 - 45	40
7,200 - 10,000 S. F. Lots	45 - 55	50
Multiple Family Residential:		
Condominiums	45 - 70	65
Apartments	65 - 90	80
Mobile Home Park	60 - 85	75
Commercial, Downtown Business or Industrial	80 -100	90

Notes:

1. Land use should be based on ultimate development of the watershed. Long range master plans for the County and incorporated cities should be reviewed to insure reasonable land use assumptions.
2. Recommended values are based on average conditions which may not apply to a particular study area. The percentage impervious may vary greatly even on comparable sized lots due to differences in dwelling size, improvements, etc. Landscape practices should also be considered as it is common in some areas to use ornamental gravels underlain by impervious plastic materials in place of lawns and shrubs. A field investigation of a study area should always be made, and a review of aerial photos, where available may assist in estimating the percentage of impervious cover in developed areas.
3. For typical horse ranch subdivisions increase impervious area 5 percent over the values recommended in the table above.

**RCFC & WCD**  
HYDROLOGY MANUAL

**IMPERVIOUS COVER  
FOR  
DEVELOPED AREAS**



**SITE**

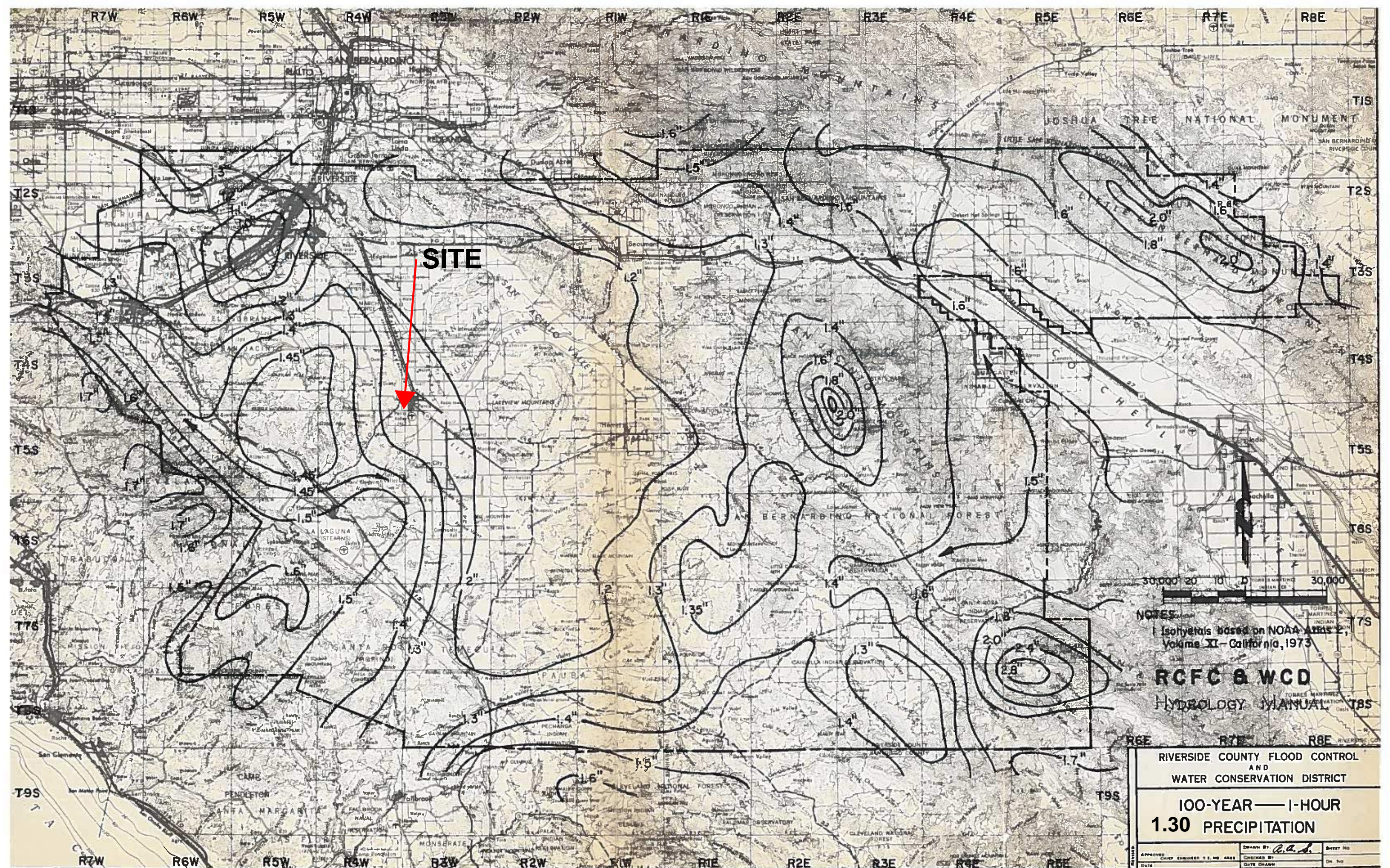
NOTES:  
 Isohyets based on NOAA Atlas 2,  
 Volume XI - California, 1973

**RCFC & WCD**  
 HYDROLOGY MANUAL

RIVERSIDE COUNTY FLOOD CONTROL  
 AND  
 WATER CONSERVATION DISTRICT

**2-YEAR — 1-HOUR  
 0.50 PRECIPITATION**

APPROVED	DATE	ENGINEER	NO. 0022	DRAWN BY	DATE	SHEET NO.



**SITE**

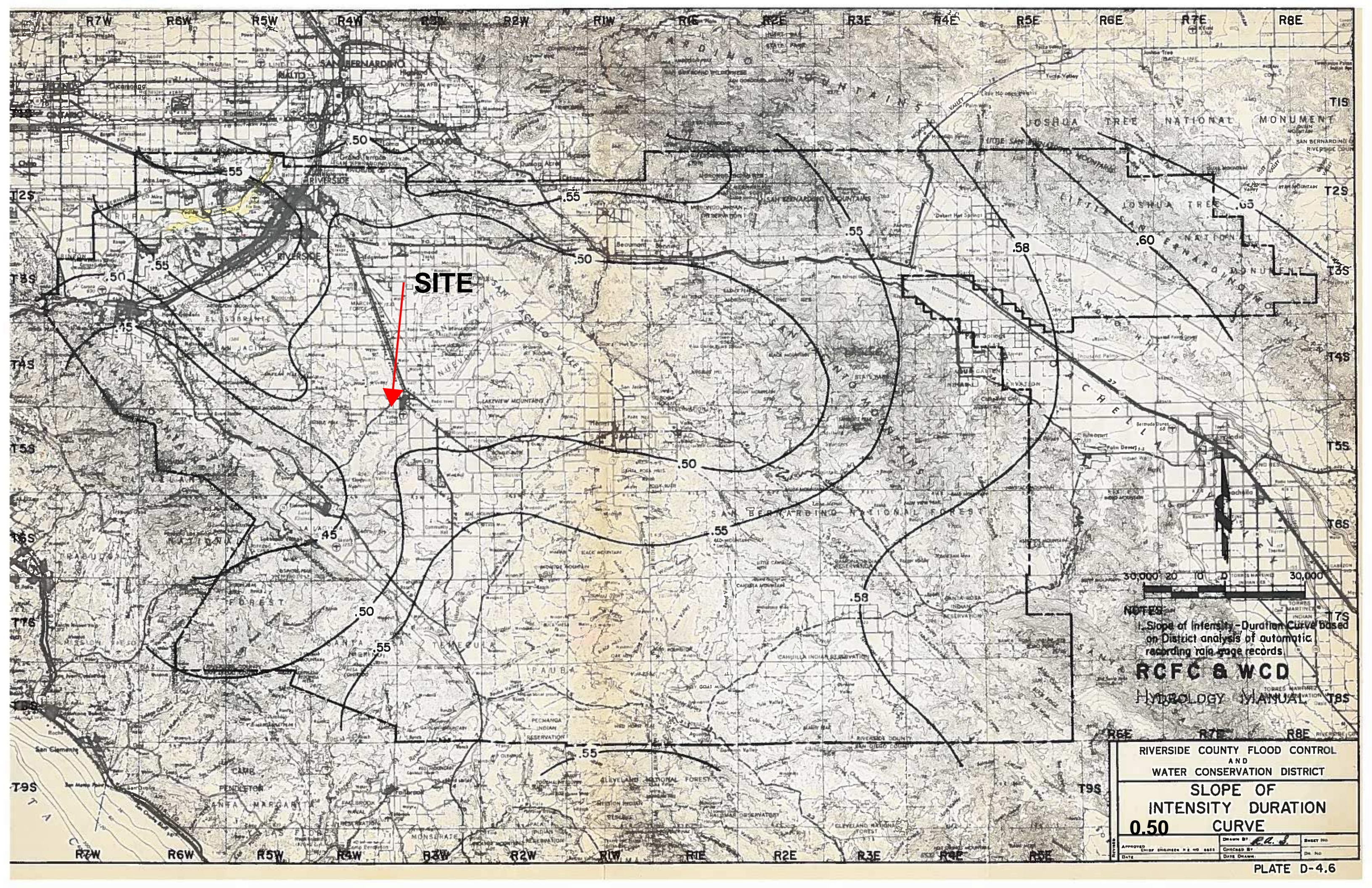
NOTES:  
 1 Isohyets based on NOAA Atlas 14, Volume XI - California, 1973

**RCFC & WCD**  
 HYDROLOGY MANUAL

RIVERSIDE COUNTY FLOOD CONTROL AND WATER CONSERVATION DISTRICT

**100-YEAR — 1-HOUR  
 1.30 PRECIPITATION**

APPROVED	CHIEF ENGINEER	DATE	DRAWN BY	DATE	SHEET NO.
			<i>R.A.S.</i>		



**SITE**

NOTES  
 1. Slope of Intensity-Duration Curve Based on District analysis of automatic recording rain gage records.

**RCFC & WCD**  
 HYDROLOGY MANUAL

RIVERSIDE COUNTY FLOOD CONTROL AND WATER CONSERVATION DISTRICT		
<b>SLOPE OF INTENSITY DURATION CURVE</b>		
<b>0.50</b>		
APPROVED DATE	CHIEF ENGINEER NO. 2 NO. 6663 CHECKED BY DATE DRAWN	DRAWN BY <i>R.L.J.</i> SHEET NO. OF NO.