



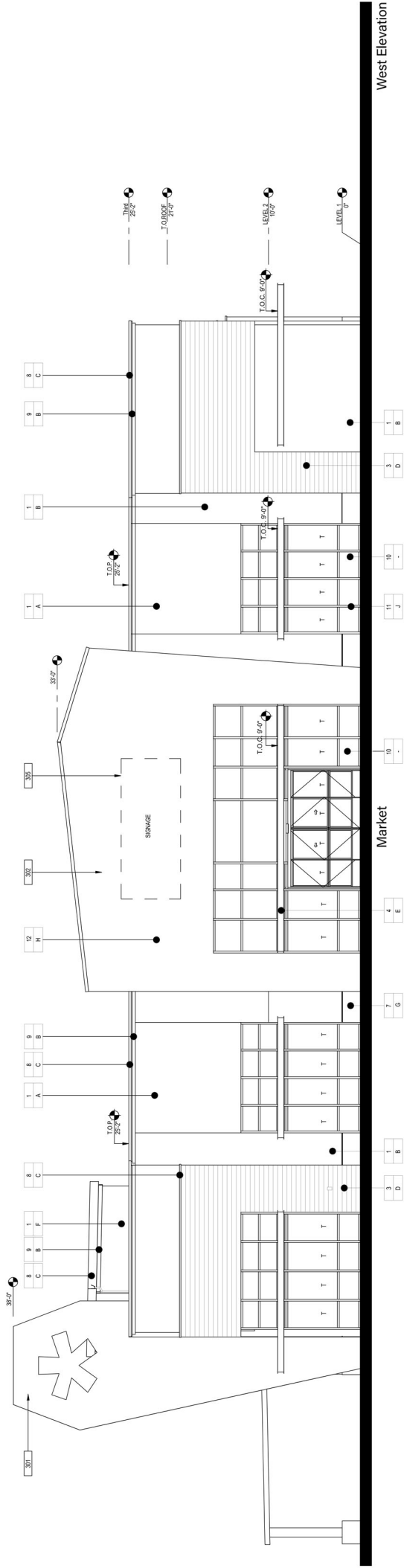
NWC CASE AND GOETZ ROAD-BEYOND MARKET
Perris, California

COLORS AND MATERIALS

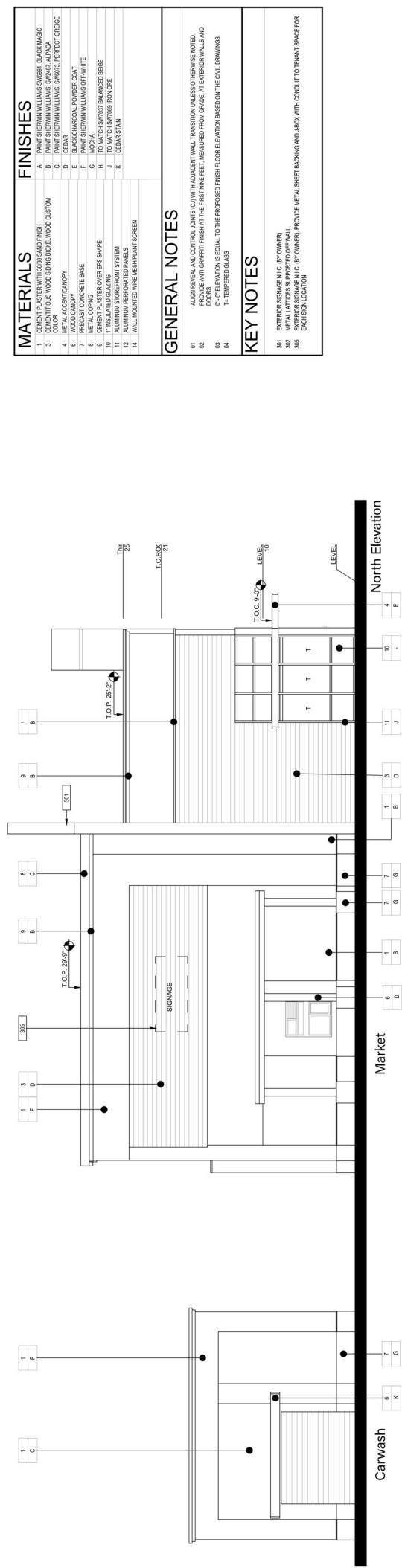


SMS ARCHITECTS

DECEMBER 08, 2025 | 1



West Elevation



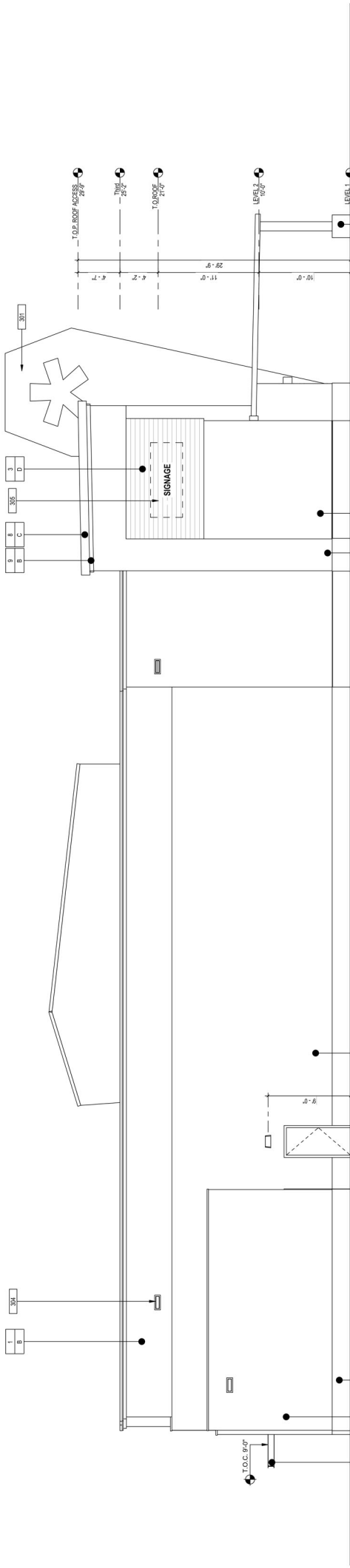
North Elevation

MATERIALS	
1	CEMENT FLASTER WITH 3/8" SAND FINISH
A	PAINT SHERWIN WILLIAMS SW7001 BLACK MAGIC COLOR
B	PAINT SHERWIN WILLIAMS SW7001 PERFECT GREGE COLOR
C	PAINT SHERWIN WILLIAMS SW7001 PERFECT GREGE COLOR
D	CLEAR
E	BLACK CHARCOAL POWDER COAT
F	PAINT SHERWIN WILLIAMS SW7001 PERFECT GREGE COLOR
G	PRECAST CONCRETE BASE
H	METAL COPING
I	CEMENT FLASTER OVER EPS SHAPE
J	ALUMINUM STOREFRONT SYSTEM
K	ALUMINUM STOREFRONT SYSTEM
L	WALL MOUNTED WIRE MESH PLANT SCREEN

FINISHES	
1	PAINT SHERWIN WILLIAMS SW7001 BLACK MAGIC COLOR
2	PAINT SHERWIN WILLIAMS SW7001 PERFECT GREGE COLOR
3	PAINT SHERWIN WILLIAMS SW7001 PERFECT GREGE COLOR
4	CLEAR
5	BLACK CHARCOAL POWDER COAT
6	PAINT SHERWIN WILLIAMS SW7001 PERFECT GREGE COLOR
7	PRECAST CONCRETE BASE
8	METAL COPING
9	CEMENT FLASTER OVER EPS SHAPE
10	ALUMINUM STOREFRONT SYSTEM
11	ALUMINUM STOREFRONT SYSTEM
12	WALL MOUNTED WIRE MESH PLANT SCREEN

GENERAL NOTES	
01	ALSO REVEAL AND CONTROL JOINTS (CJ) WITH ADJACENT WALL TRANSITION UNLESS OTHERWISE NOTED
02	DOORS AND WINDOWS TO BE FINISHED AT THE FIRST FINE FEET, MEASURED FROM GRADE, AT EXTERIOR WALLS AND DOORS
03	7'-0" ELEVATION IS EQUAL TO THE PROPOSED FINISH FLOOR ELEVATION BASED ON THE CIVIL DRAWINGS.
04	1" TEMPERED GLASS

KEY NOTES	
301	EXTERIOR SIGNAGE N.I.C. (BY OWNER)
302	METAL LATTICES SUPPORTED OFF WALL
303	EXTERIOR SIGNAGE N.I.C. (BY OWNER) PROVIDE METAL SHEET BACKING AND JOCK WITH CONDUIT TO TENANT SPACE FOR EACH SIGN LOCATION



East Elevation

Market

South Elevation

Carwash

Market

South Elevation

Carwash

MATERIALS		FINISHES	
1	CEMENT PLASTER WITH 3000 SAND FINISH	A	PAIN SHERWIN WILLIAMS SW9601 BLACK MAGIC
2	100% SOLID WOOD SIGNAGE	B	PAIN SHERWIN WILLIAMS SW9601 BLACK MAGIC
3	100% SOLID WOOD SIGNAGE	C	PAIN SHERWIN WILLIAMS SW901 PERFECT GREIGE
4	METAL ACCENT/CANOPY	D	CEDAR
5	PRECAST CONCRETE BASE	E	BLACK CHARCOAL POWDER COAT
6	METAL COPING	F	PAIN SHERWIN WILLIAMS SP7 WHITE
7	CEMENT PLASTER OVER EPS SHAPE	G	MOCHA
8	ALUMINUM STOREFRONT SYSTEM	H	TO MATCH SW701 BALANCED BEIGE
9	ALUMINUM STOREFRONT SYSTEM	J	TO MATCH SW7099 IRON ORE
10	ALUMINUM STOREFRONT SYSTEM	K	CLEAR STAIN
11	WALL MOUNTED WIRE MESH PLANT SCREEN		

GENERAL NOTES

- 01 ALIGN REVER AND CONTROL JOINTS (CJ) WITH ADJACENT WALL TRANSITION UNLESS OTHERWISE NOTED.
- 02 METAL LATTICES SUPPORTED OFF WALL
- 03 0'-0" ELEVATION IS EQUAL TO THE PROPOSED FINISH FLOOR ELEVATION BASED ON THE CIVIL DRAWINGS.
- 04 1- TEMPERED GLASS

KEY NOTES

- 301 EXTERIOR SIGNAGE N.I.C. (BY OWNER)
- 302 METAL LATTICES SUPPORTED OFF WALL
- 303 EXTERIOR SIGNAGE N.I.C. (BY OWNER)
- 304 EXTERIOR SIGNAGE N.I.C. (BY OWNER)



NWC CASE AND GOETZ ROAD-BEYOND MARKET

Perris, California

ELEVATIONS
East and South Elevation



SMS ARCHITECTS

DECEMBER 08, 2025 | 3



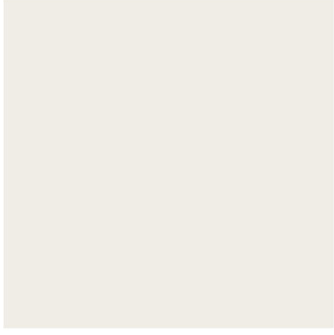
1, 9A



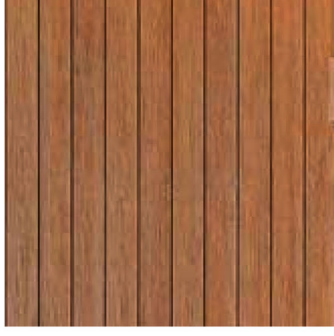
1, 9B



1, 8, 9C



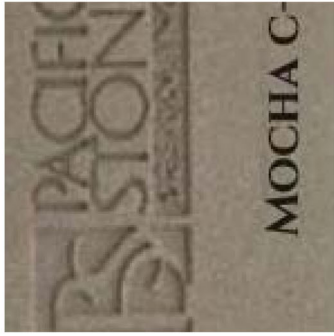
1, 9F



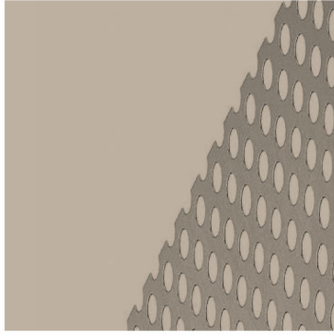
2D, K



4, 11



7



12



14



MATERIALS		FINISHES	
1	CEMENT PLASTER WITH 3/8" SAND FINISH	A	PAINT SHERWIN WILLIAMS SW7001 BLACK MAGIC COLOR
2	WOOD FINISH	B	PAINT SHERWIN WILLIAMS SW7001 PERFECT GREIGE
3	METAL ACCENT/CANOPY	C	CELSIOR
4	METAL ACCENT/CANOPY	D	BLACK CHARCOAL POWDER COAT
5	PRECAST CONCRETE BASE	E	BLACK CERAMIC TILES/GRIP WHITE
6	METAL COPING	F	MOCHA
7	CEMENT PLASTER OVER EPS SHAPE	G	TO MATCH SW7001 BALANCED BEIGE
8	PERFORATED METAL SCREEN	H	ALUMINUM STOREFRONT SYSTEM
9	ALUMINUM STOREFRONT SYSTEM	I	CELSIOR STAIN
10	ALUMINUM STOREFRONT SYSTEM	J	WALL MOUNTED WIRE MESH/PLANT SCREEN
11	ALUMINUM STOREFRONT SYSTEM	K	
12	ALUMINUM STOREFRONT SYSTEM		
13	ALUMINUM STOREFRONT SYSTEM		
14	ALUMINUM STOREFRONT SYSTEM		

GENERAL NOTES

01 ALUMINUM AND CONTROL JOINTS (CJ) WITH ADJACENT WALL TRANSITION UNLESS OTHERWISE NOTED

02 METAL LATTICES SUPPORTED OFF WALL

03 6" ELEVATION IS EQUAL TO THE PROPOSED FINISH FLOOR ELEVATION BASED ON THE CIVIL DRAWINGS.

04 1" TEMPERED GLASS

KEY NOTES

301 EXTERIOR SIGNAGE N.L.C. (BY OWNER)

302 METAL LATTICES SUPPORTED OFF WALL

303 EXTERIOR SIGNAGE N.L.C. (BY OWNER) PROVIDE METAL SHEET BACKING AND JOCK WITH CONDUIT TO TENANT SPACE FOR EACH SIGN LOCATION



NWC CASE AND GOETZ ROAD
Perris, California

RENDERING



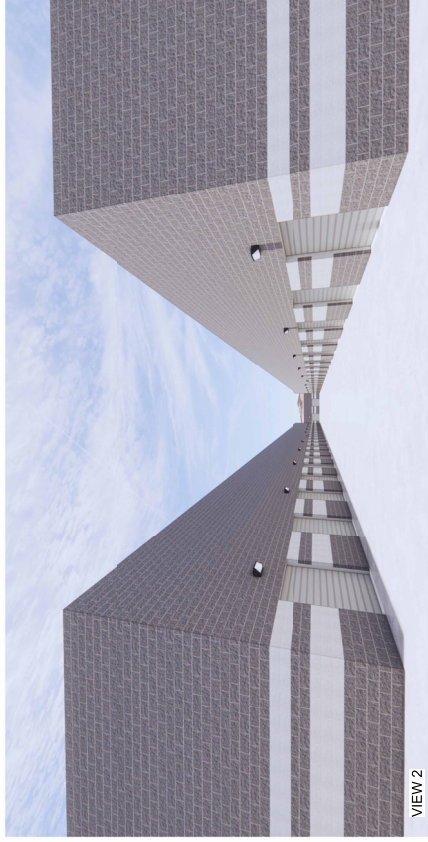
SMS ARCHITECTS

November 25, 2025 | 1

Number	Revision Description	Date



VIEW 1



VIEW 2



VIEW 3



VIEW 4



VIEW 5



VIEW 6

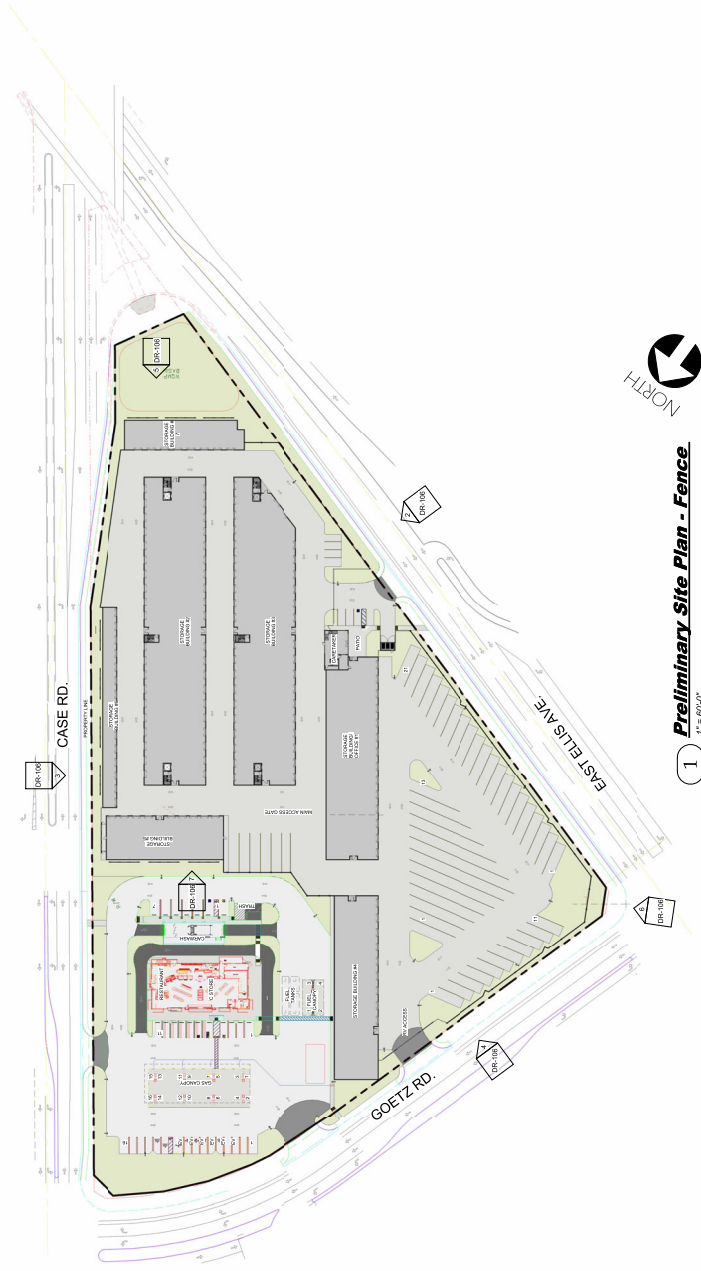
Design Review Plans for:
Ramona Expressway,
LLC.

20-1118
 09.23.2025
SEC of Case & Goetz
APN#: 310-160-070
Perris, CA 92570

DR-105

Renderings

Number	Revision Description	Date



1 Preliminary Site Plan - Fence
 1" = 60'-0"



2 Storage Fence Elevation - East Elis Ave.
 1" = 20'-0"



3 Storage Fence Elevation - Case Road
 1" = 20'-0"



4 Storage Fence Elevation - Goetz Rd
 1" = 20'-0"



5 Storage Fence Elevation - Case & E Elis
 1" = 20'-0"

6 Storage Fence Elevation - Goetz & E Elis
 1" = 20'-0"

7 Storage Fence Elevation - Gas Station North West
 1" = 20'-0"

Design Review Plans for:
Ramona Expressway, LLC.

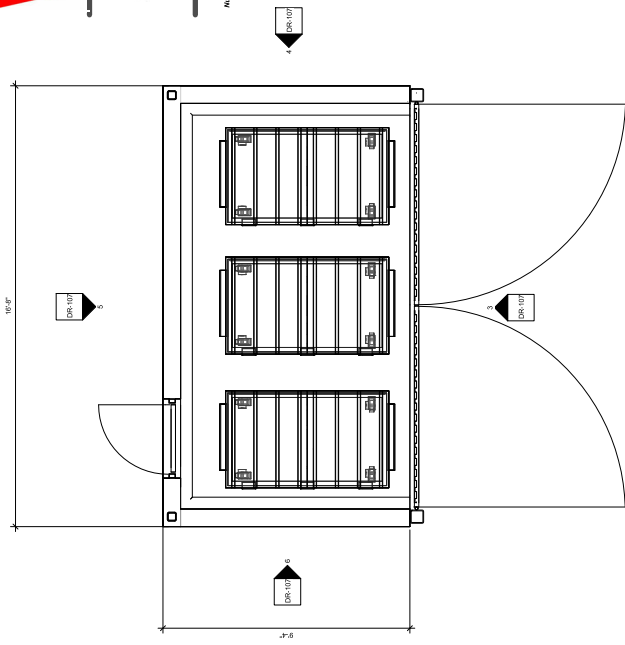
20-1118
 03.23.2022
SEC of Case & Goetz
 APN#: 310-160-070
 Perris, CA 92570

DR-106

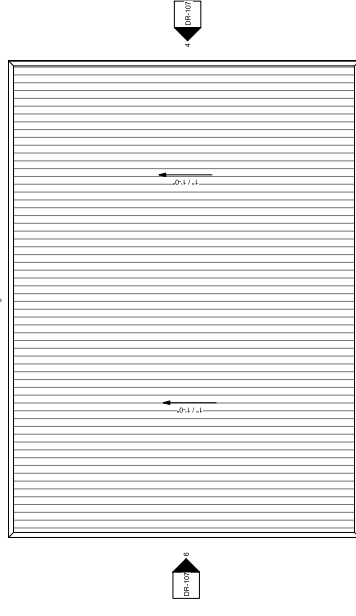
Site Plan Fence Exhibit



Number	Revision	Description	Date
DR-107			



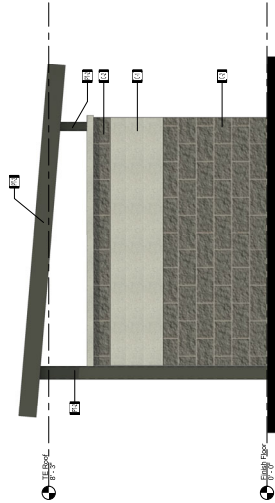
1 Trash Enclosure Floor Plan
1/2" = 1'-0"



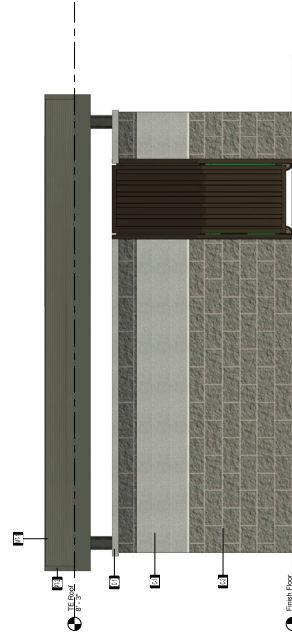
2 Roof Plan - DR
1/2" = 1'-0"



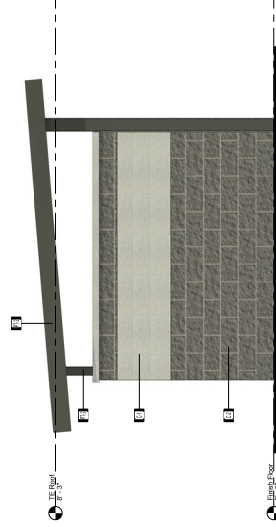
3 Front - Elevation
1/2" = 1'-0"



4 Right - Elevation
1/2" = 1'-0"



5 Rear - Elevation
1/2" = 1'-0"



6 Left - Elevations
1/2" = 1'-0"



Fixture Plans
**C-Store, Restaurant &
 Carwash Design For**

Palomarmar, LP

20-1118
 09-15-2023

North West Corner of 74 and
 Palomar Rd, Menifee, CA

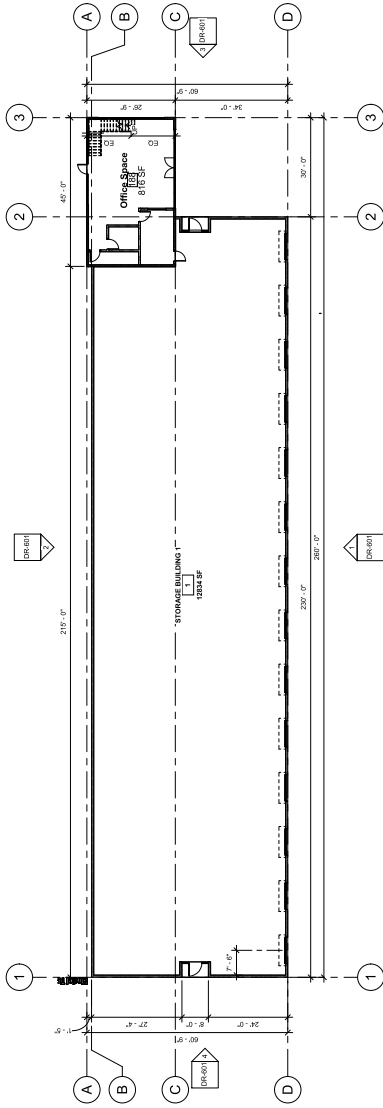
DR-107

**Storage Units Trash
 Enclosure**

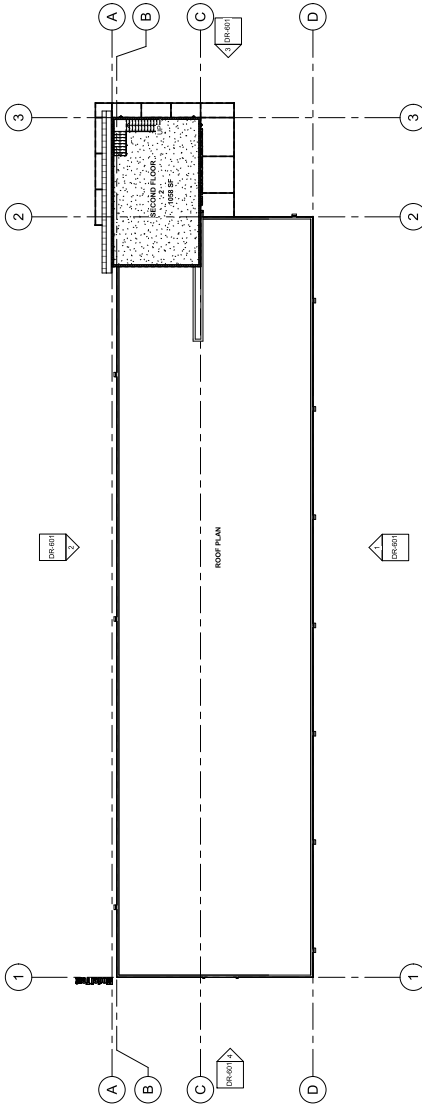
Tag	Manufacturer	Description	Color
CT	DRCO	DMU - Waste Sump Enclosure	
CE	DRCO	DMU - 24" Black - Silt Floor	
MF-1	Metal Slat	1/2" x 1/2" x 12' (W251) MAGNALOCK 100	
PF-2	DMU (On-site) Panels	Black 14' x 8' (E) 2503	Black (on-site with)



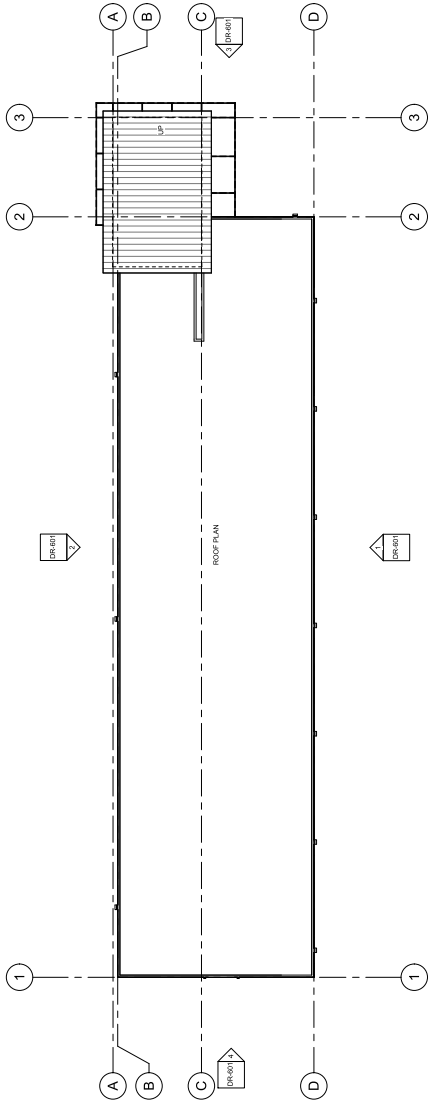
Number	Revision	Description	Date



1 Storage Building 1 - Floor Plan
 1/16" = 1'-0"



3 Storage Building 1 - Second Floor
 1/16" = 1'-0"



2 Storage Building 1 - Roof Plan
 1/16" = 1'-0"

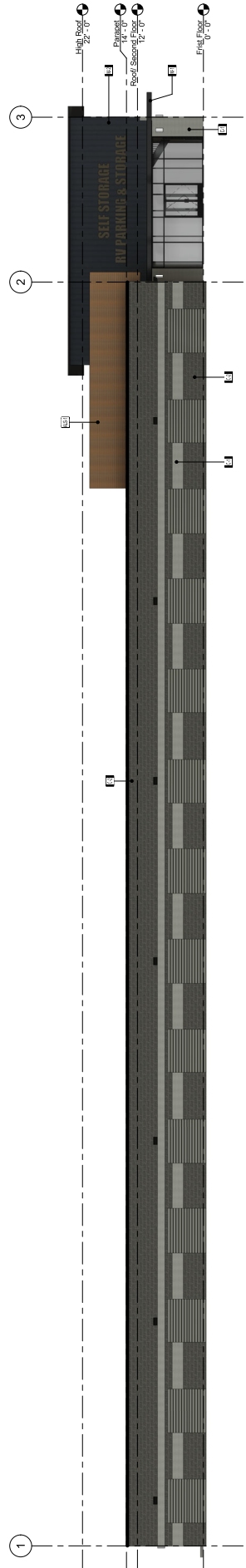
Design Review Plans for:
**Ramona Expressway,
 LLC.**

20-1118
 09/09/2025
SEC of Case & Goetz
 APN#: 310-160-070
 Perris, CA 92570

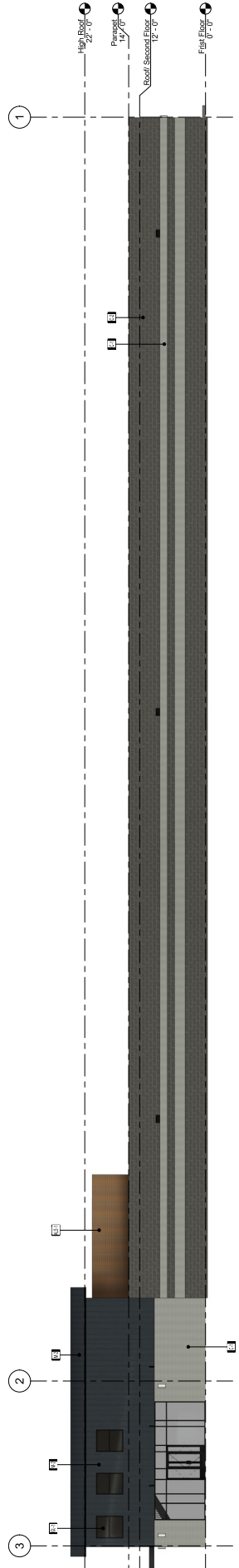
DR-600
Storage Building 1
Floor Plan



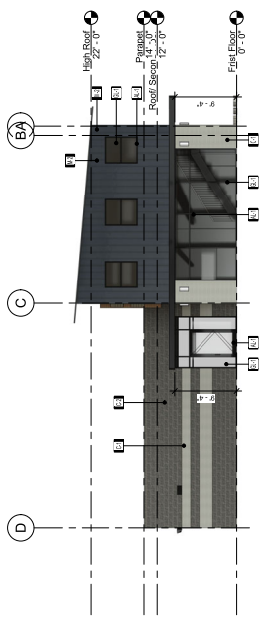
Revision Number	Description	Date



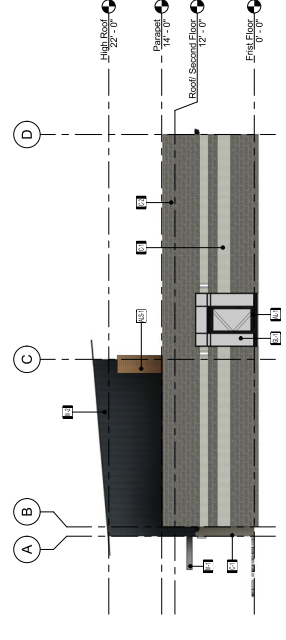
1 **Storage Building 1 - North Elevation**
1/8" = 1'-0"



2 **Storage Building 1 - South Elevation**
1/8" = 1'-0"



3 **Storage Building 1 - East Elevation**
1/8" = 1'-0"



4 **Storage Building 1 - West Elevation**
1/8" = 1'-0"

Tag	Manufacturer	Description	Color
AL-1	Anodized Black	Anodized Black	
ALS-1	Aluminum Siding	Aluminum Wood Siding	
C-1	ORCO	CMU - White Slump Shotblast	
C-2	ORCO	CMU - JRT - Black - Split Face	
GL-1	Dunn Glazing	Gray Tint Glazing	
MR-1	Dunn Edwards	Black Tile DEBS57	
MR-2	Metals Sales	Weathered Copper	
MR-2	Metals Sales	Panel CMBS-1653	

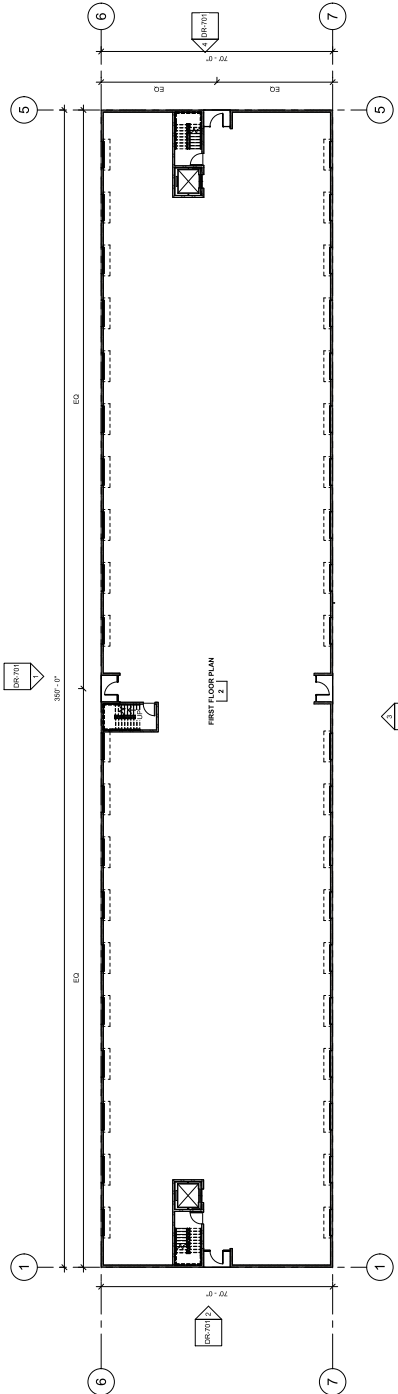
Design Review Plans for:
Ramona Expressway,
LLC.

20-1118
 09/09/2025
SEC of Case & Goetz
 APN#: 310-160-070
 Perris, CA 92570

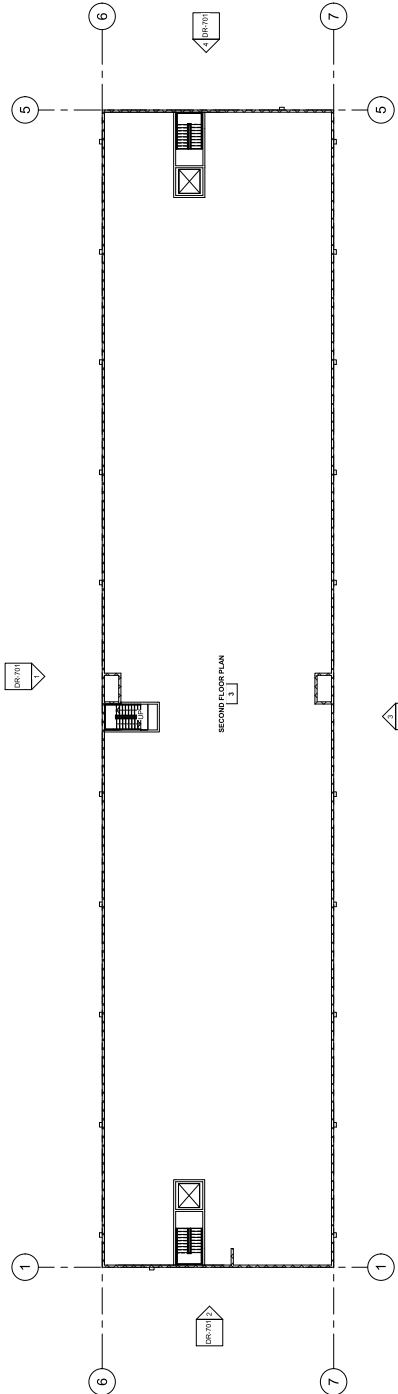
DR-601
Storage Building 1
Exterior Elevations



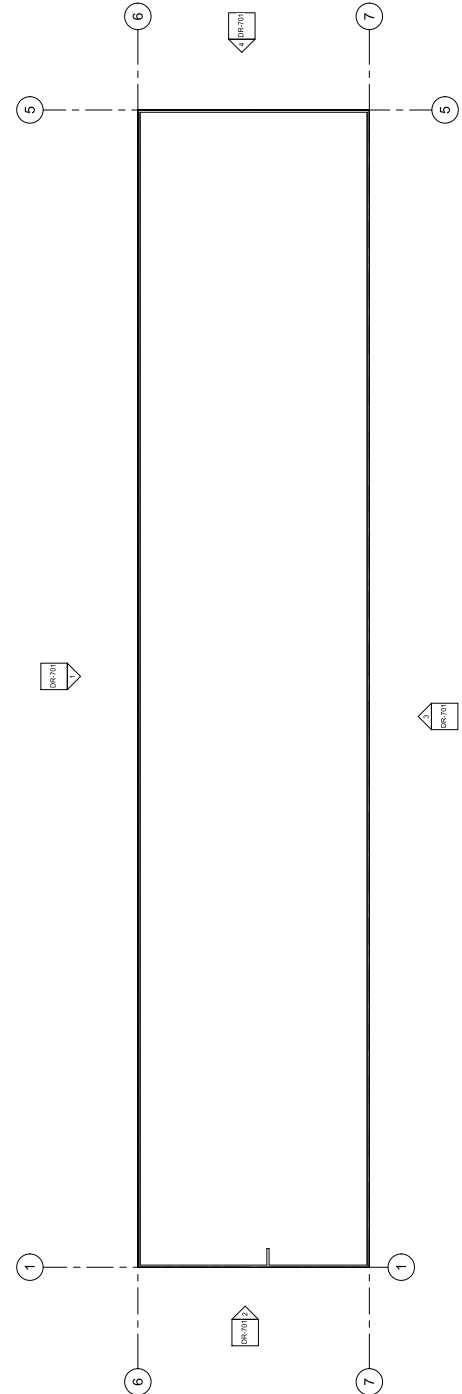
Number	Revision	Description	Date
01	10/20/2025		



1 *Storage Building 2 - First Floor Plan*
1/16" = 1'-0"



3 *Storage Building 2 - Second Floor Plan*
1/16" = 1'-0"



2 *Storage Building 2 - Roof Plan*
1/16" = 1'-0"

Design Review Plans for:
**Ramona Expressway,
 LLC.**

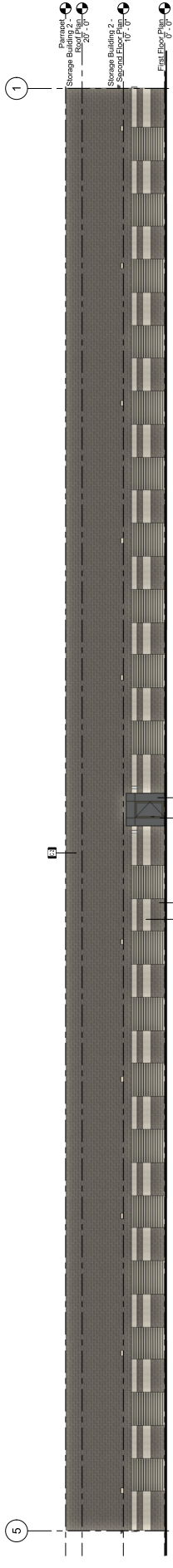
20-1118
 06/24/2025
SEC of Case & Goetz
 APN#: 310-160-070
 Perris, CA 92570

DR-700

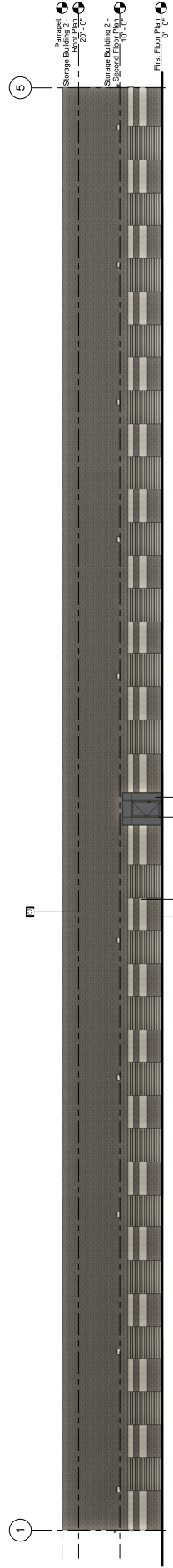
**Storage Building 2
 Floor Plans**



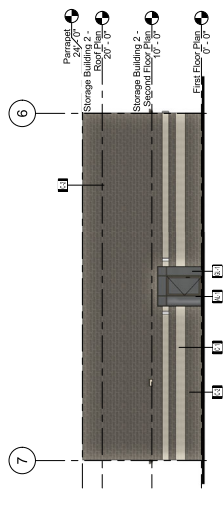
Revision	Description	Date



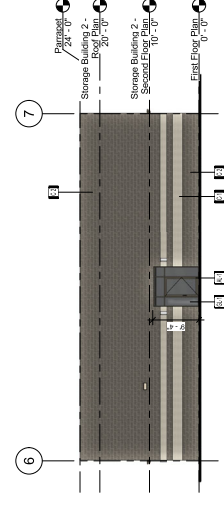
1 Storage Building 2 - North Elevation
 3/32" = 1'-0"



3 Storage Building 2 - South Elevation
 3/32" = 1'-0"



4 Storage Building 2 - East Elevation
 3/32" = 1'-0"



2 Storage Building 2 - West Elevation
 3/32" = 1'-0"

MATERIAL LIST		
Tag	Material / Manufacturer	Color
AL-1	Anodized Black	
C-1	ORCO	
C-2	ORCO	
GBZ	Custom Bevel Tread and Flanges With Semi Gloss Dark Edwards Or Equal Color 2	
GL-1	Dual Glazing	
MB	Sheet Steel Core	
STSZ	Sheet Steel Core	

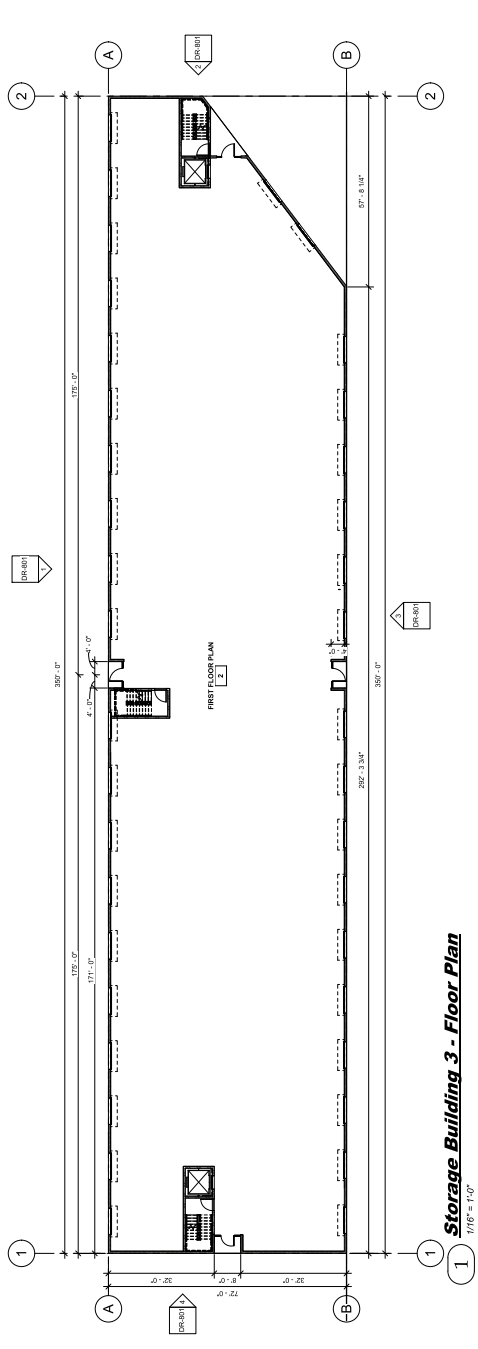
Design Review Plans for:
Ramona Expressway,
LLC.

20-1118
 06/27/2025
SEC of Case & Goetz
 APN#: 310-160-070
 Perris, CA 92570

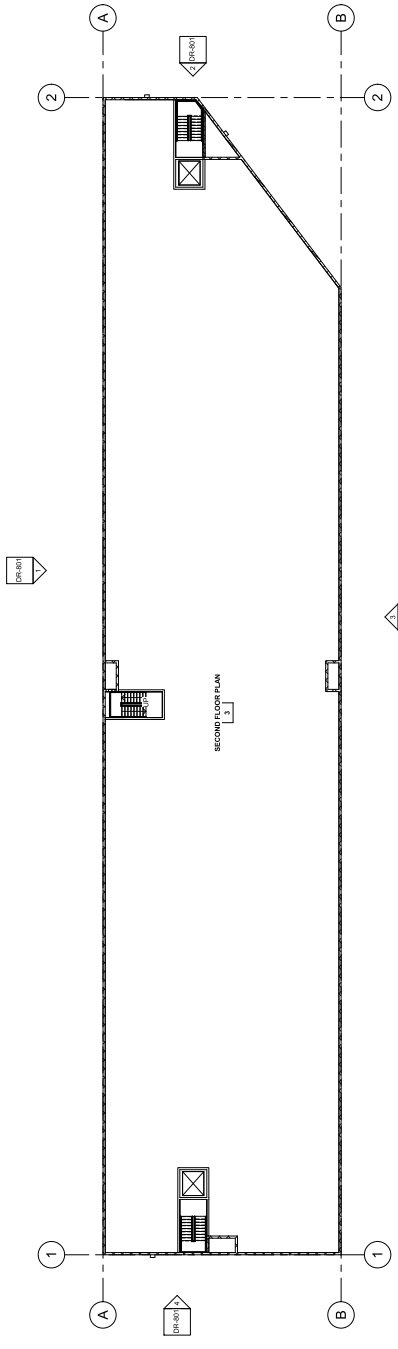
DR-701
Storage Building 2
Exterior Elevations



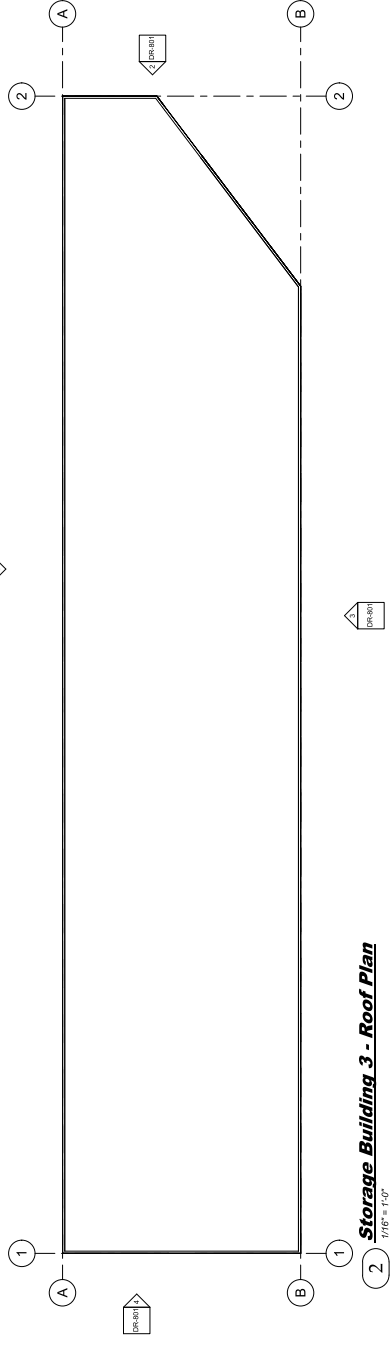
Number	Revision	Description	Date
08/10/2025			



Storage Building 3 - Floor Plan
 1/16" = 1'-0"



Storage Building 3 - Second Floor
 1/16" = 1'-0"



Storage Building 3 - Roof Plan
 1/16" = 1'-0"

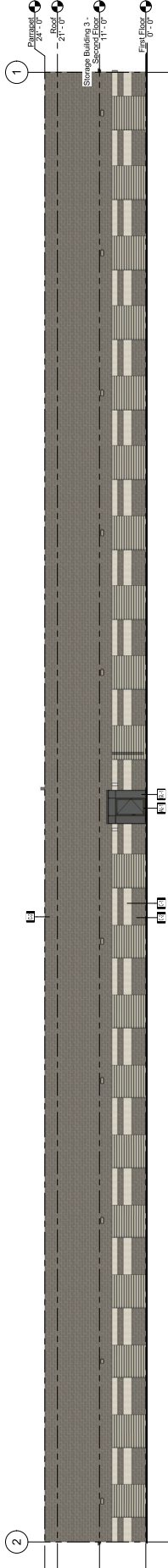
Design Review Plans for:
**Ramona Expressway,
 LLC.**

20-1118
 06/24/2025
SEC of Case & Goetz
 APN#: 310-160-070
 Perris, CA 92570

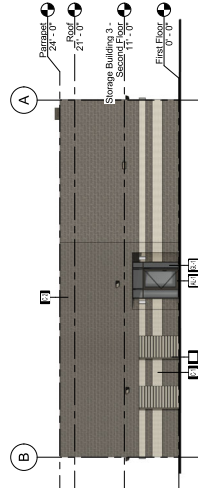
DR-800
Storage Building 3
Floor Plans



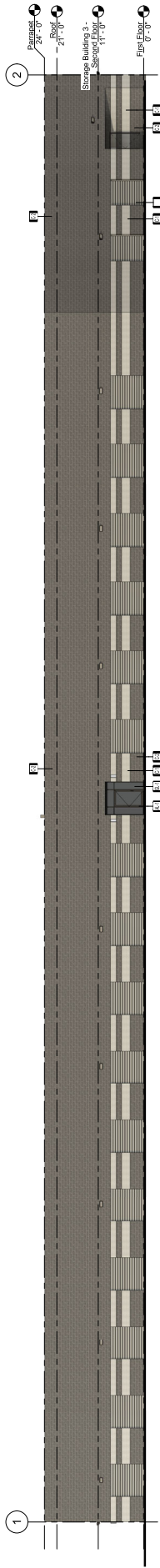
Number	Revision	Description	Date



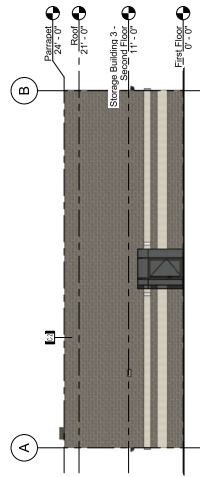
1 Storage Building 3 - South Elevation
 3/22' = 1/4"



2 Storage Building 3 - East Elevation
 3/22' = 1/4"



3 Storage Building 3 - North Elevation
 3/22' = 1/4"



4 Storage Building 3 - West Elevation
 3/22' = 1/4"

Tag	Manufacturer	Description	Color
REL-1	Acroplast	Acroplast Black Anodized Black	
C-1	ORCO	ORCO - White Round Staircase	
C-2	ORCO	ORCO - Jet Black - Split Face	
GR-1	Grain Board	Grain Board - Teak and Walnut with Birch Glue-Up Overlay (see GR-2)	
GR-2	Grain Board	Grain Board - Teak and Walnut with Birch Glue-Up Overlay (see GR-1)	
MB			
ET-2			

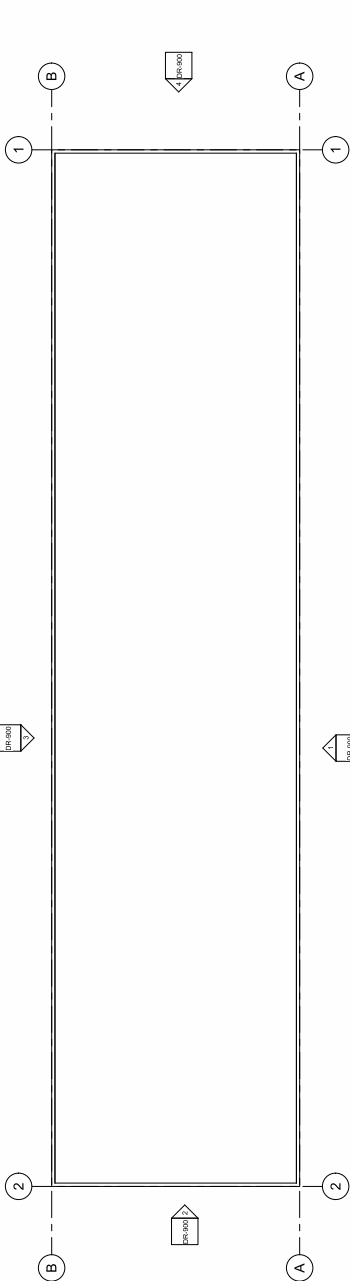
Design Review Plans for:
Ramona Expressway, LLC.

20-1118
 06/27/2025
SEC of Case & Goetz
 APN#: 310-160-070
 Perris, CA 92570

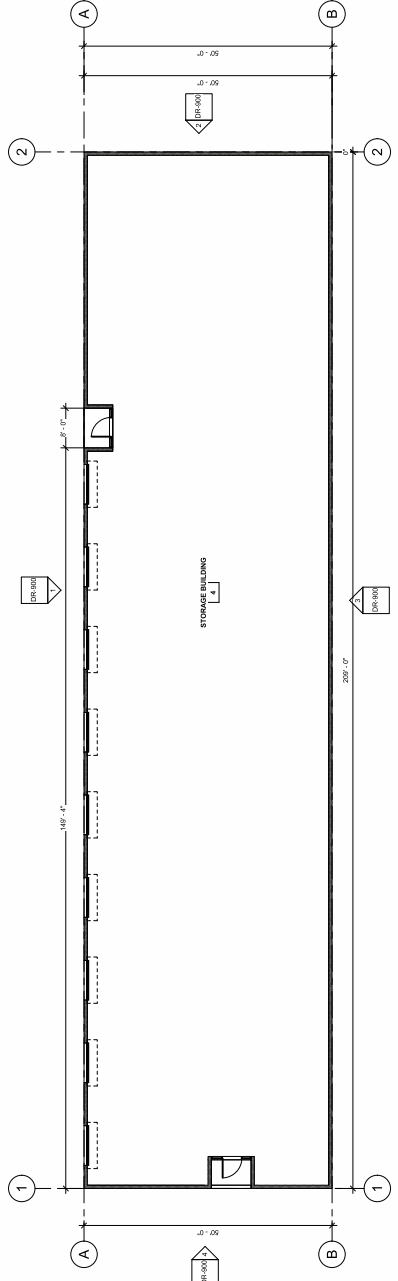
DR-801
Storage Building 3
Exterior Elevations



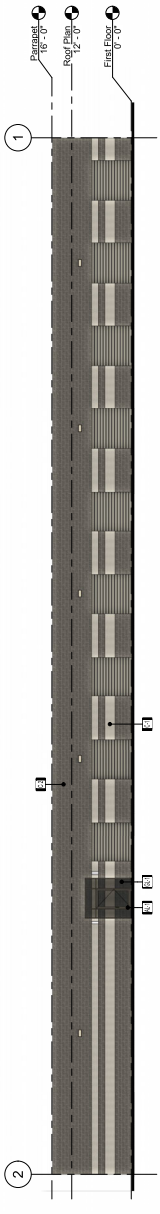
Number	Revision	Description	Date



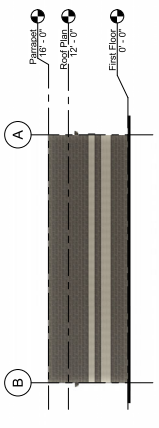
6 Storage Building 4 - Roof Plan
3/32" = 1'-0"



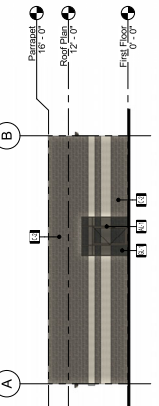
5 Storage Building 4 - Floor Plan
3/32" = 1'-0"



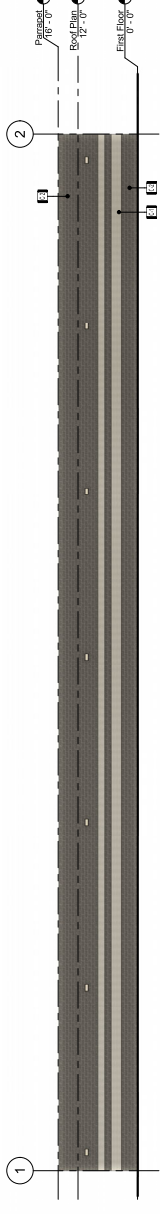
1 Elevation 1 - a
3/32" = 1'-0"



2 Elevation 2 - a
3/32" = 1'-0"



3 Elevation 3 - a
3/32" = 1'-0"



4 Elevation 4 - a
3/32" = 1'-0"

Tag	Manufacturer	Description	Color
AL-1	Anodized Black	Anodized Black	
C-1	ORCO	CMU - White Slump Shotblast	
C-2	ORCO	CMU - Jet - Black Split Face	
GL-1	Clear Glazing	Gray Tint Glazing	

Design Review Plans for:
Ramona Expressway,
LLC.

20-1118
 01/07/2025
SEC of Case & Goetz
 APN#: 310-160-070
 Perris, CA 92570

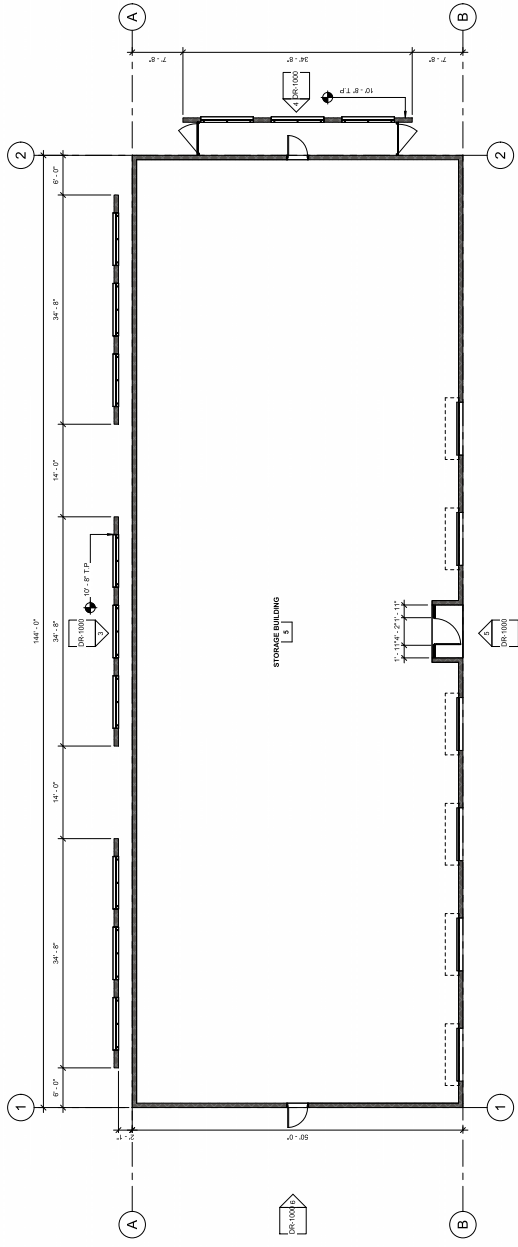
DR-900

Storage Building 4 Floor
Plans and Elevations

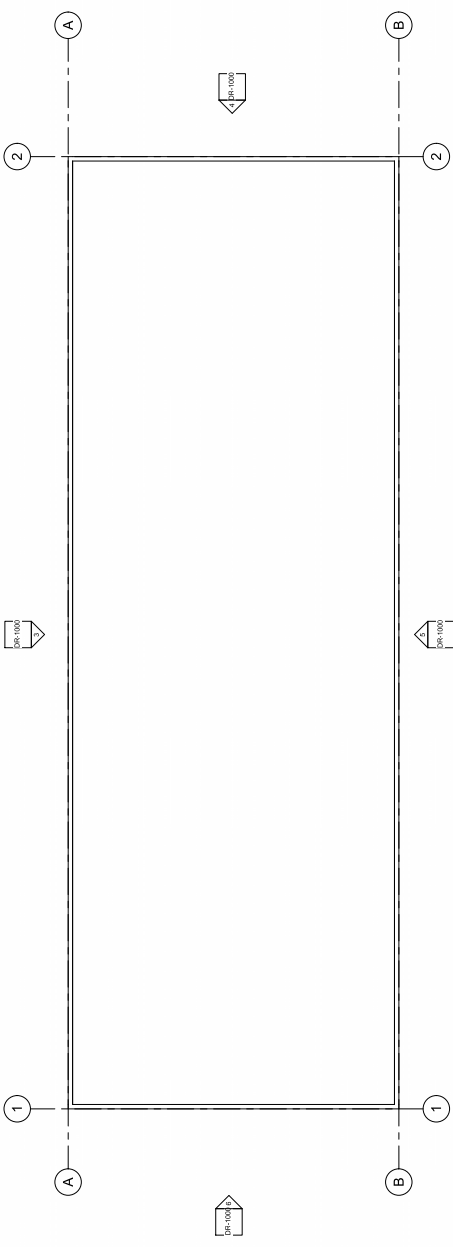


Number	Revision	Description	Date

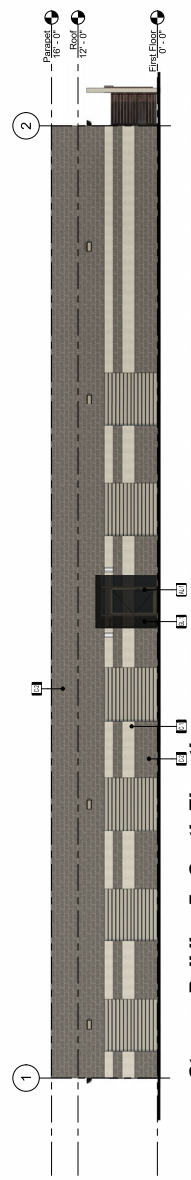
Tag	Manufacturer	Description	Color
AL-1	Black Aluminum	Anodized Black	
C-1	ORCO	CMU - White Slump Shabbast	
C-2	ORCO	CMU - JH - Black - Spall Face	
GL-1	Dual Glazing	Grey Tint Glazing	
WT-1	Custom Finish	Horizontal 5" Wood Slats	



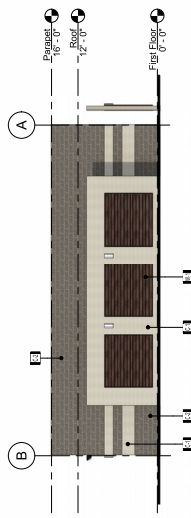
1 Storage Building 5 - Floor Plan
 1/8" = 1'-0"



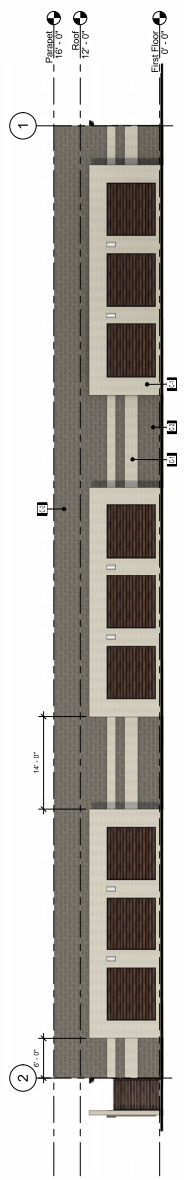
2 Storage Building 5 - Roof Plan
 1/8" = 1'-0"



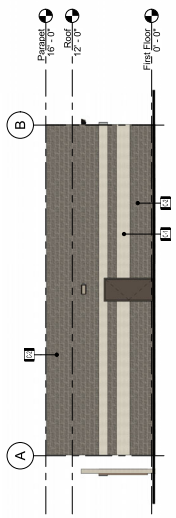
5 Storage Building 5 - South Elevation
 1/8" = 1'-0"



4 Storage Building 5 - West Elevation
 1/8" = 1'-0"



3 Storage Building 5 - North Elevation
 1/8" = 1'-0"



6 Storage Building 5 - East Elevation
 1/8" = 1'-0"

Design Review Plans for:
Ramona Expressway, LLC.

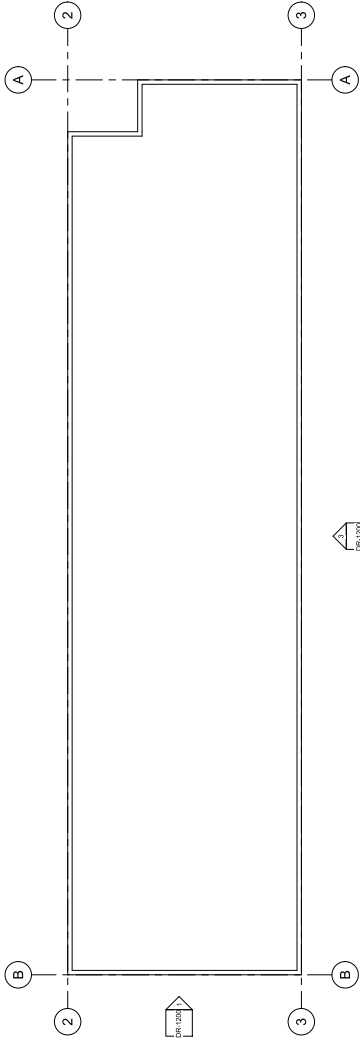
20-1118
 03/19/2025
SEC of Case & Goetz
 APN#: 310-160-070
 Perris, CA 92570

DR-1000

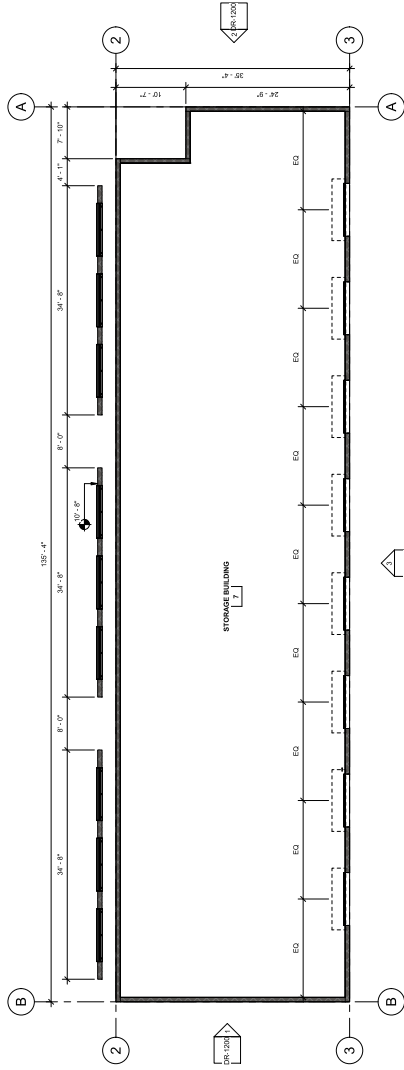
Storage Building 5 Floor
 Plan and Elevations




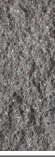


Number	Revision	Description	Date

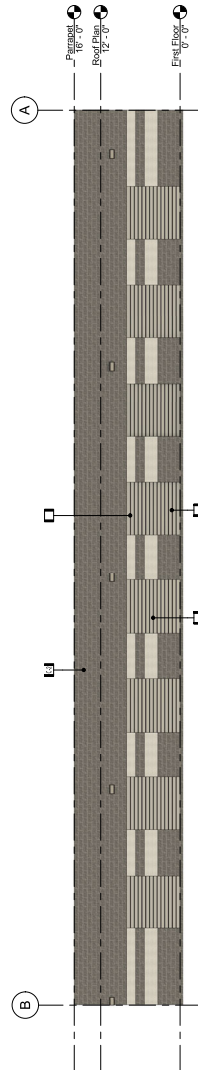


6 **Storage Building 7 - Roof Plan**
1/8" = 1'-0"

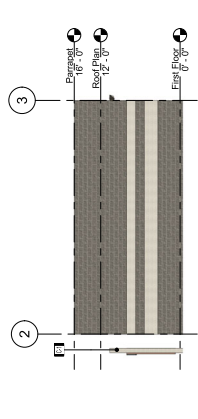


5 **Storage Building 7 - Floor Plan**
1/8" = 1'-0"

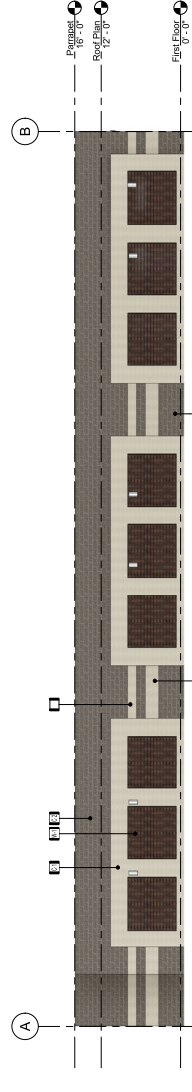
Tag	Manufacturer	Description	Color
GT	ORCO	GRID - White Stone Substrat	
CE	ORCO	GRID - 3/4" Black Stone Base	
ME	Factory Finish	Finish to Match Base Coat From Gary	
WT	Custom Finish	Horizontal 5" Wood Slats	



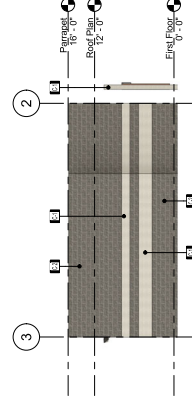
3 **Storage Building 7 - North Elevation**
1/8" = 1'-0"



1 **Storage Building 7 - West Elevation**
1/8" = 1'-0"



4 **Storage Building 7 - South Elevation**
1/8" = 1'-0"



2 **Storage Building 7 - East Elevation**
1/8" = 1'-0"

Design Review Plans for:
Ramona Expressway,
LLC.

20-1118
 06/27/2025
SEC of Case & Goetz
 APN#: 310-160-070
 Perris, CA 92570

DR-1200

Storage Building 7
Floor Plan & Elevations