



**SIGNAGE PROGRAM**

THIS PAGE IS INTENTIONALLY LEFT BLANK

# Harvest Landing Retail Center

## Entitlement Signage Criteria

November 17, 2025



432 Culver Boulevard,  
Playa Del Rey, CA 90293  
310-822-5223  
[SelbertPerkins.com](http://SelbertPerkins.com)

AZURE  
DEVELOPMENT

944 S Greenwood Avenue  
Montebello, CA 90640  
323-477-1160

## Contents

---

- 3 Site
- 4 Sign Types Summary Diagram
- 5 Sign Regulations Summary

### Proposed Sign Locations

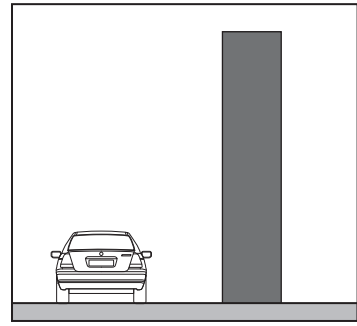
- 7 Sign Type S1 – Locations
- 8 Freeway Identity - Design & Placement
- 9 Sign Locations: Public
- 10 Tenant Sign Locations: Building A East Elevation
- 11 Tenant Sign Locations: Building A North & South Elevations
- 12 Tenant Sign Locations: Pad 1 Elevations
- 13 Tenant Sign Locations: Pad 2 Elevations
- 14 Tenant Sign Locations: Pad 3 Elevations
- 15 Tenant Sign Locations: Pad 4 Elevations
- 16 Tenant Sign Locations: Pad 5 Elevations
- 17 Tenant Sign Locations: Pad 6 Elevations
- 18 Tenant Sign Locations: Pad 7 Elevations
- 19 Tenant Sign Locations: Pad 8 Elevations

### Signage Criteria & Reference

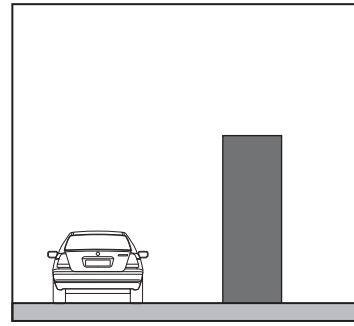
- 21 Site Signage: S1 Freeway Monument/Pylon Identity
- 22 Site Signage: S2 Site Monument/Pylon Identity
- 23 Tenant Signage: T1 Awning/Marquee
- 24 Tenant Signage: T2 Freestanding Monument/Pylon
- 25 Tenant Signage: TB Blade
- 26 Tenant Signage: T4 & T5 Wall
- 27 Tenant Signage: T6 Window



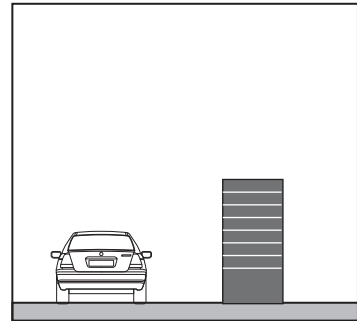
**SITE IDENTITY SIGNS [S]**



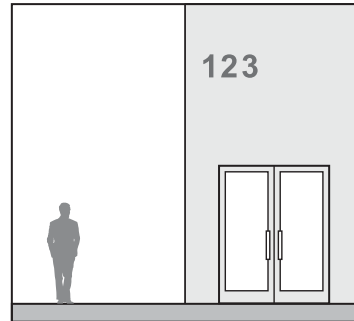
**S1** FREEWAY MONUMENT/PYLON IDENTITY



**S2** FREESTANDING SITE MONUMENT/PYLON IDENTITY

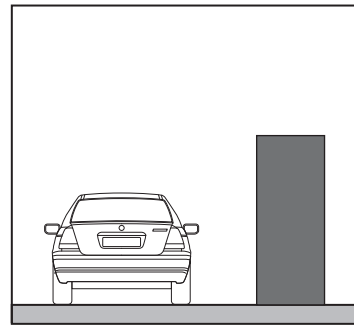


**S3** MULTI-TENANT MONUMENT IDENTITY

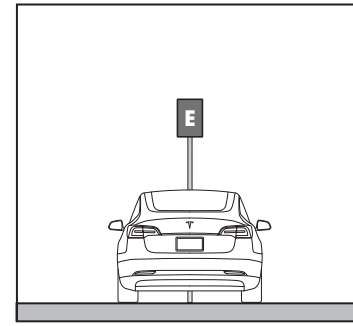


**S4** BUILDING ADDRESS

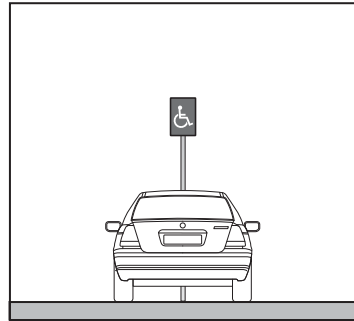
**CODE/REGULATION SIGNS [R]**



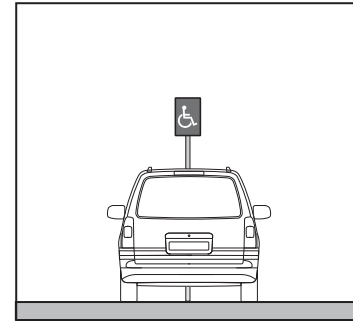
**R1** VEHICLE PARKING REGULATIONS



**R2** EV PARKING

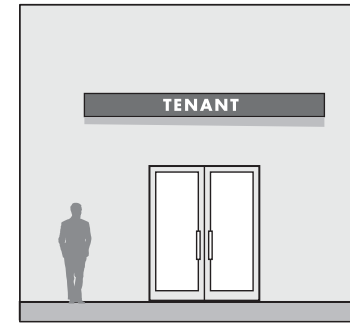


**R3** ACCESSIBLE PARKING

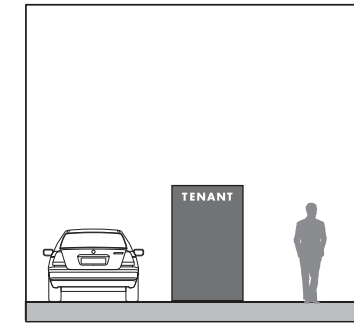


**R4** ACCESSIBLE VAN PARKING

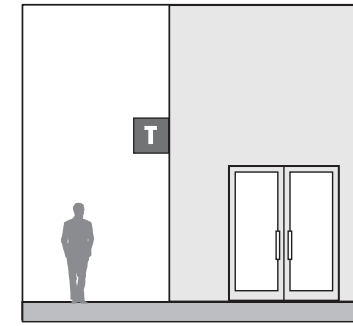
**TENANT IDENTITY SIGNS [T]**



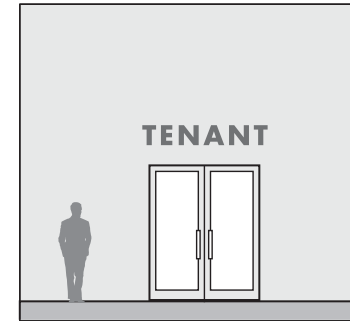
**T1** TENANT AWNING/MARQUEE IDENTITY



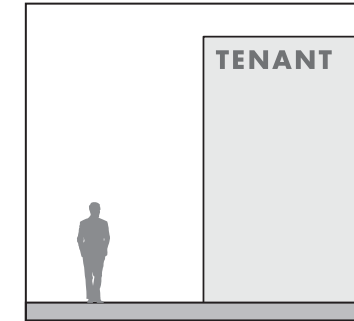
**T2** TENANT FREESTANDING MONUMENT/PYLON IDENTITY



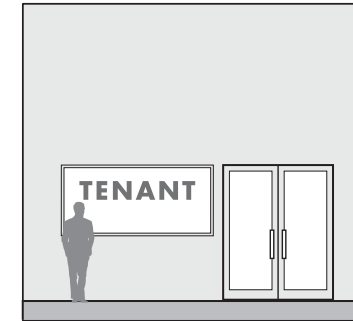
**T3** TENANT PROJECTING IDENTITY



**T4** TENANT WALL IDENTITY

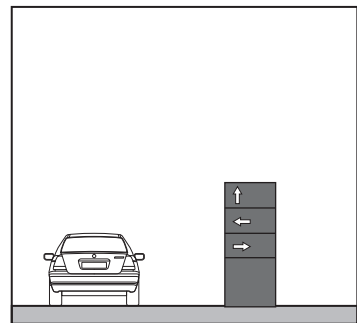


**T5** TENANT WALL IDENTITY - HIGH

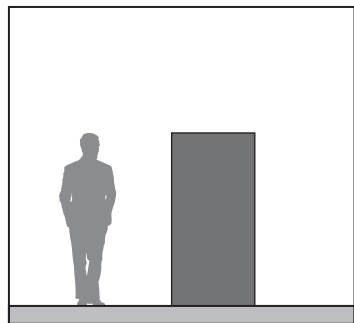


**T6** TENANT WINDOW IDENTITY

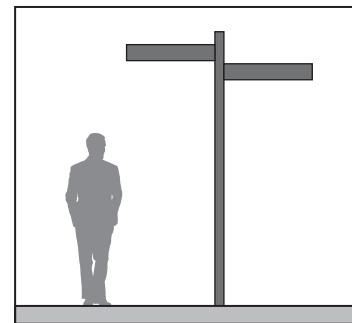
**DIRECTION/INFORMATION SIGNS [D]**



**D1** VEHICLE DIRECTION

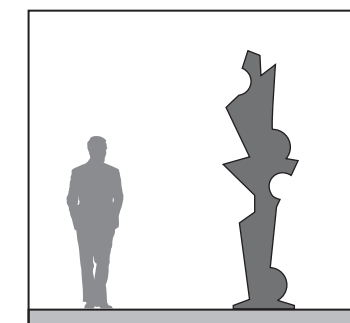


**D2** PEDESTRIAN DIRECTORY/MAP



**D3** PEDESTRIAN DIRECTIONAL

**AMENITY SIGNS [E]**



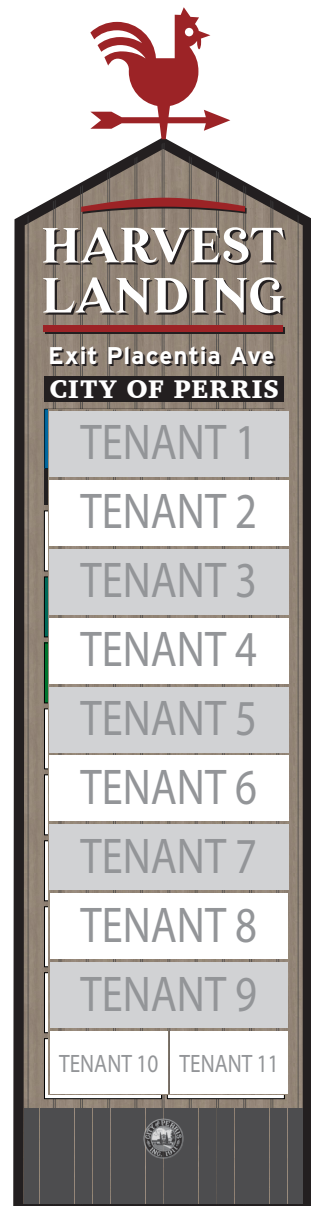
**E1** ART ELEMENT

Signage defined by City of Perris Code of Ordinances

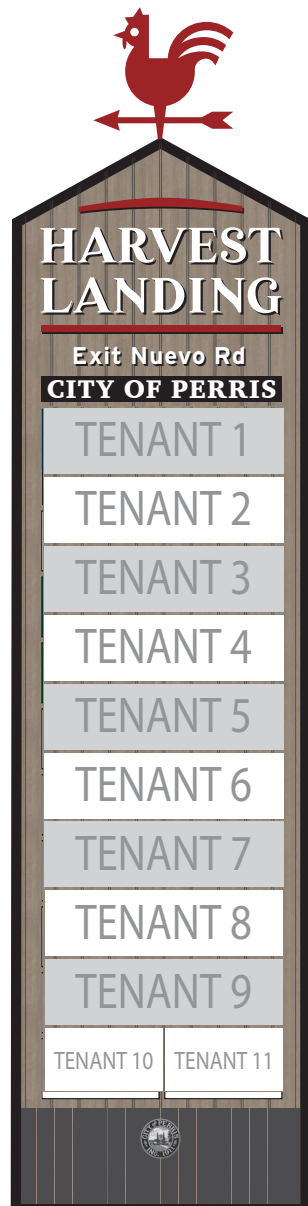
## PERRIS CODE OF ORDINANCES: CHAPTER 19.75 SIGN REGULATIONS SUMMARY

SIGN ID	SIGN TYPE	DESCRIPTION	MAX. SIZE ALLOWANCE	MAX. QUANTITY	ILLUMINATION	NOTES	CODE REFERENCE
<b>SITE IDENTITY SIGNS</b>							
S1	FREEWAY	site identity / electronic display / tenant directory	<ul style="list-style-type: none"> <li>• 100 sf / 25' height</li> <li>• 100 sf / 50' height within 300 ft of freeway</li> </ul>	1 per parcel/site	yes	<ul style="list-style-type: none"> <li>• must be located within 660 ft of freeway edge line</li> <li>• support structure must be min. 30% of sign width</li> <li>• electronic sign max size = 50% of sign area</li> </ul>	19.75.100 (b4)
S2	FREESTANDING MONUMENT / PYLON	site identity / tenant directory	<ul style="list-style-type: none"> <li>• 1–5 acres: max 32 sf / 5' ht</li> <li>• 5–15 acres: max 50 sf / 6' ht or max 100 sf / 20' ht</li> <li>• 15–25 acres: max 75 sf / 8' ht max 150 sf / 20' ht</li> </ul>	2 per site	yes	<ul style="list-style-type: none"> <li>• 1 sign per street frontage of site</li> <li>• must be located 5' or more from property line</li> </ul>	19.75.100 (b1.c2)
<b>TENANT IDENTITY SIGNS</b>							
T1	TENANT AWNING / MARQUEE	tenant identity	<ul style="list-style-type: none"> <li>• max. letter height 8"</li> <li>• max. symbol/logo height 12"</li> </ul>	unspecified	external	<ul style="list-style-type: none"> <li>• max size not to exceed 80% of awning/marquee width</li> <li>• permitted on building facades adjacent to walkway only</li> <li>• allowed on front of awning only, all side of marquee</li> <li>• signage area included in total allowable for building frontage</li> </ul>	19.75.100 (a3)
T2	TENANT FREESTANDING MONUMENT / PYLON	tenant identity	<ul style="list-style-type: none"> <li>• 1–10,000 sf: max 20 sf / 4' ht</li> <li>• 10,000–30,000 sf: max 32 sf / 5' ht</li> <li>• 30,000+ sf: max 50 sf / 5' ht</li> </ul>	2	unspecified	<ul style="list-style-type: none"> <li>• 1 sign per street frontage of building</li> <li>• allowed in addition to wall signs</li> </ul>	19.75.100 (b1.c1)
T3	TENANT UNDER-CANOPY	tenant identity / projecting blade	9 sf	1	unspecified	<ul style="list-style-type: none"> <li>• propose blade identity</li> </ul>	19.75.100 (a4)
T4	TENANT WALL	tenant identity	max. sq. ft. = tenant frontage lf x 1 sf (not to exceed 200 sf)	2	unspecified	<ul style="list-style-type: none"> <li>• size not to exceed 80% of linear building width</li> <li>* sum total allowance not to exceed 200 sf for all signs</li> </ul>	19.75.100 (a1.a-c)
T5	TENANT WALL: HIGH	tenant identity	<ul style="list-style-type: none"> <li>• 2–4 stories high: max 100 sf</li> <li>• 5–6 stories high: max 150 sf</li> <li>• 7–10 stories high: max 250 sf</li> </ul>	1 per frontage	unspecified	<ul style="list-style-type: none"> <li>• no signs on stories 1–2 allowed with this sign type</li> <li>• size not to exceed 80% of linear building width</li> <li>• must be placed near top of building</li> </ul>	19.75.100 (a1.d)
T6	TENANT WINDOW	tenant identity	9 sf	1 per public entrance	unspecified	no surface painted signs	19.75.100 (a2)

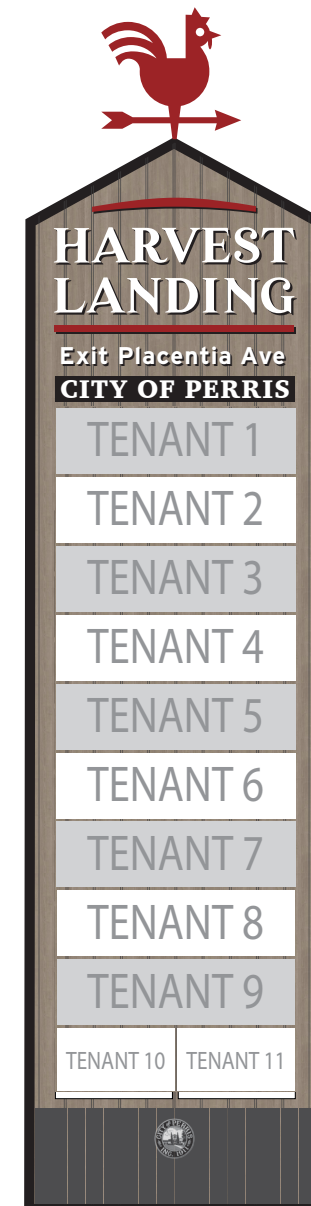
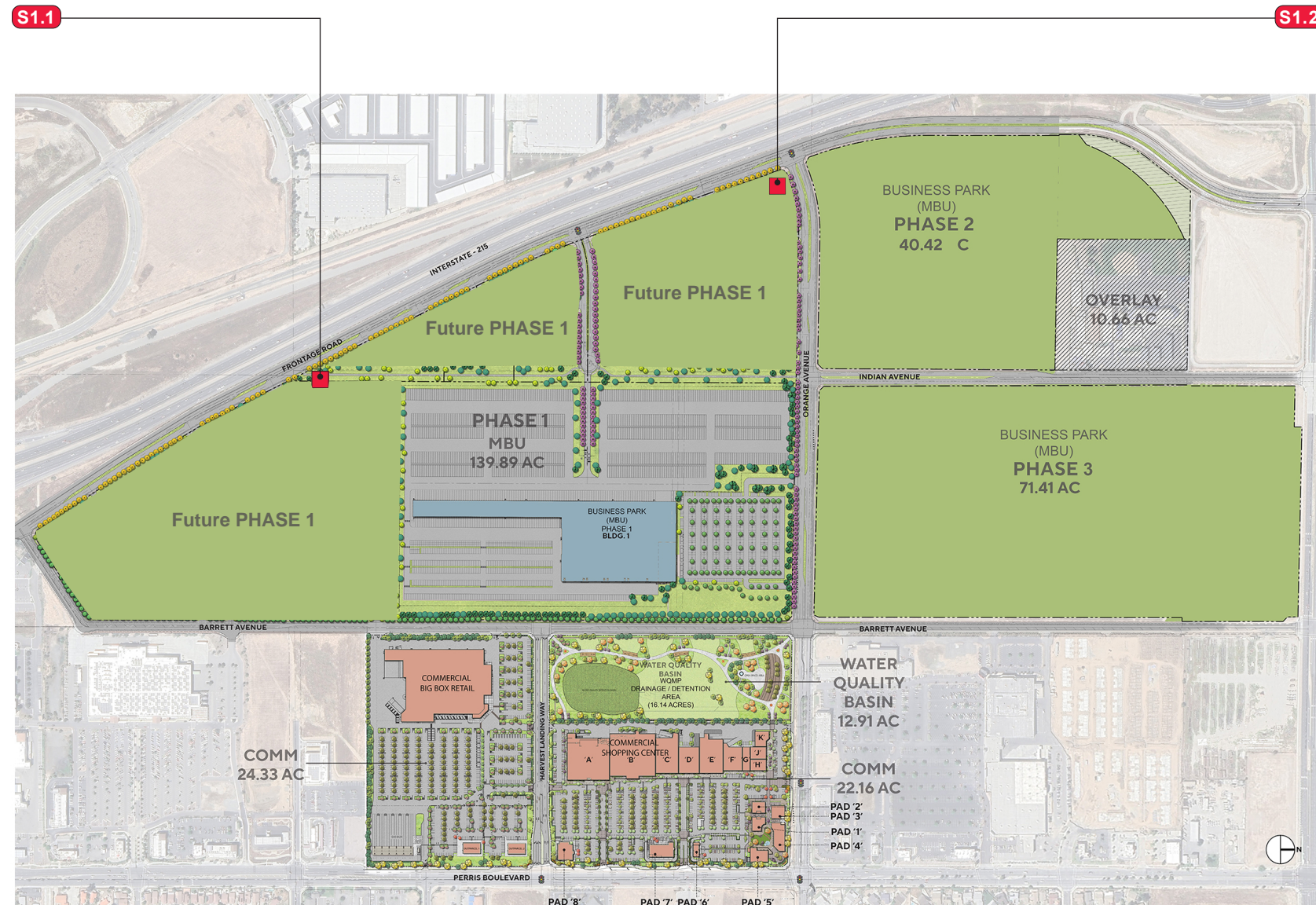
# Proposed Sign Locations



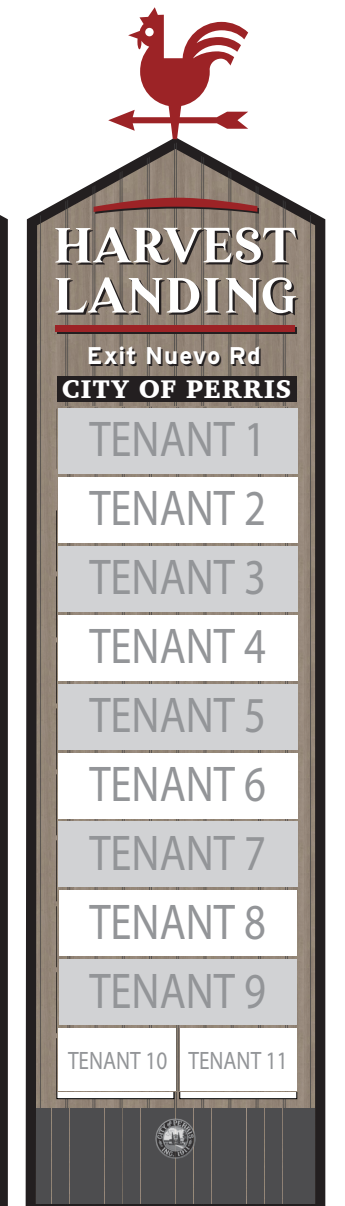
SOUTH SIDE (A)



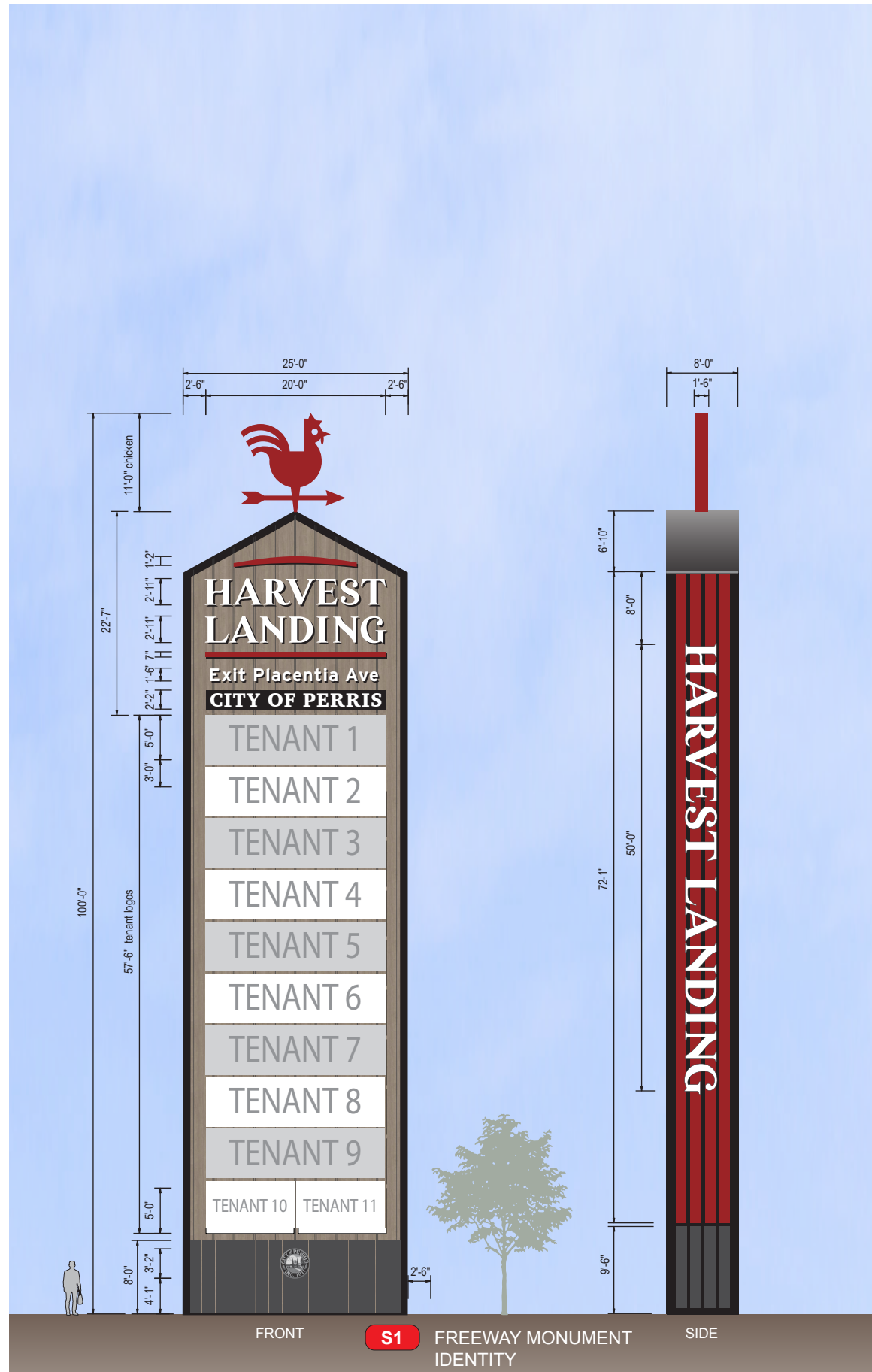
NORTH SIDE (B)

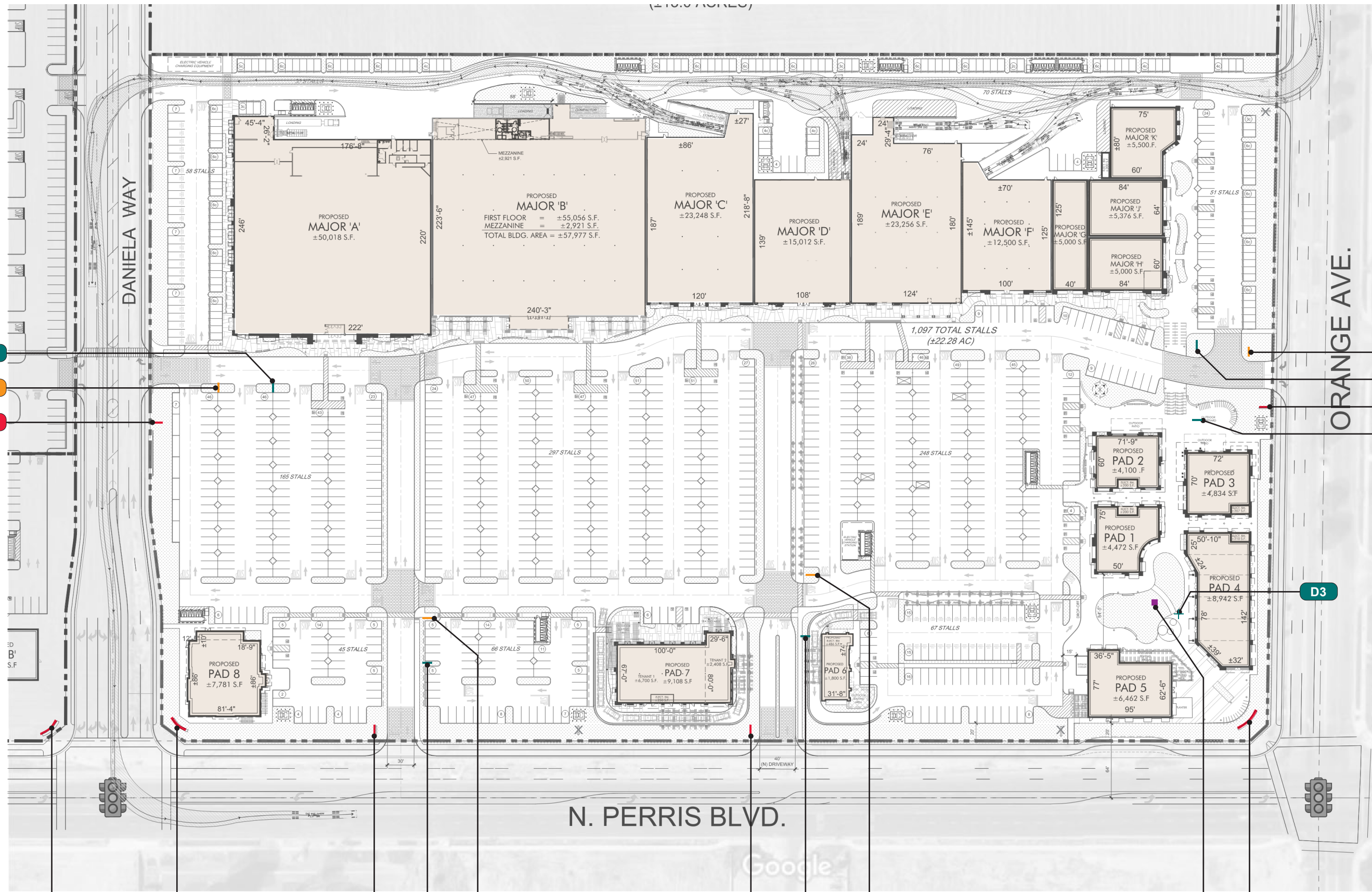


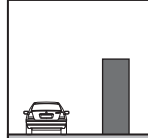
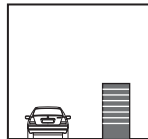
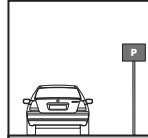
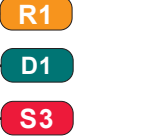

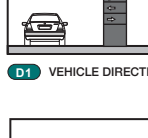
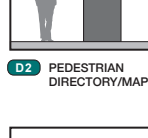
SOUTH SIDE (A)



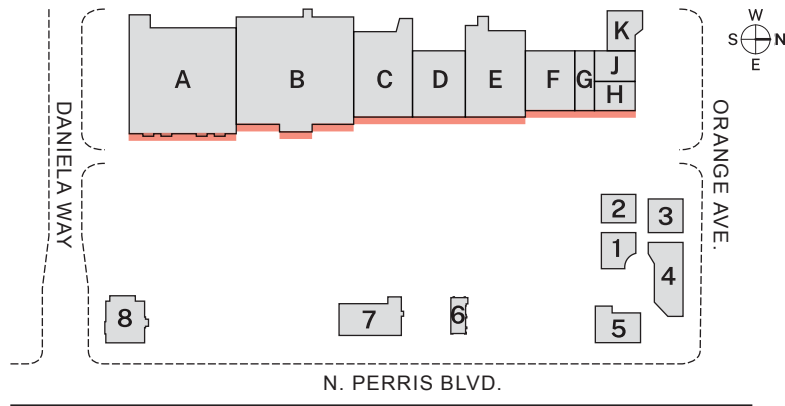
NORTH SIDE (B)





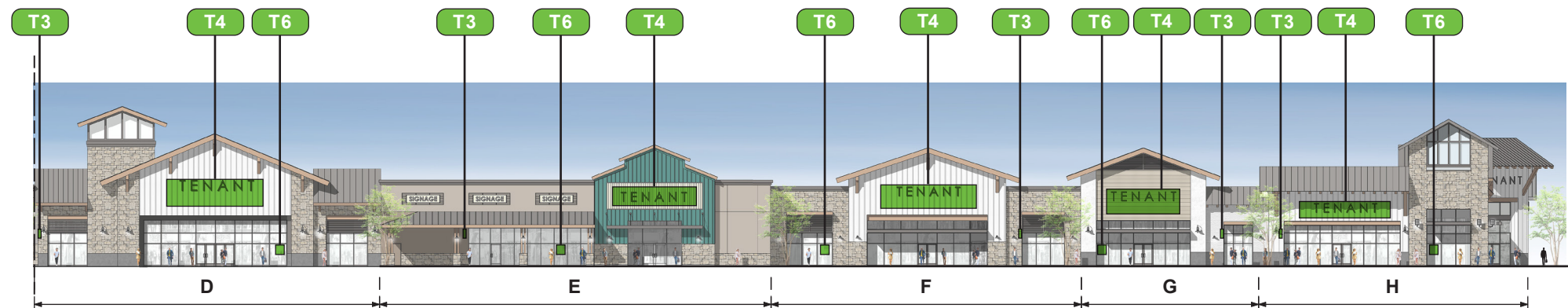
-  **S2** FREESTANDING SITE MONUMENT/PYLON IDENTITY
-  **S3** MULTI-TENANT MONUMENT IDENTITY
-  **R1** VEHICLE PARKING REGULATIONS
-  **D1** VEHICLE DIRECTION
-  **D2** PEDESTRIAN DIRECTORY/MAP
-  **D3** PEDESTRIAN DIRECTIONAL
-  **E1** ART ELEMENT

**KEY PLAN**



**PROPOSED SIGNAGE**

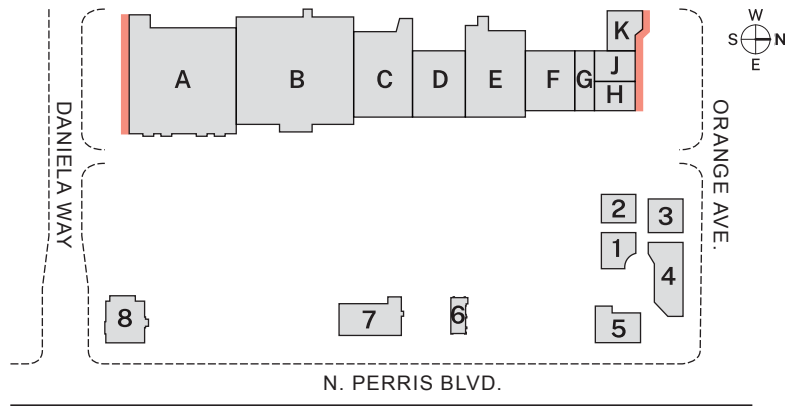
TENANT	FRONTAGE LINEAR FT	T3 BLADE (4 SF MAX.)	T4 WALL (SF FACTOR 1:1)	T6 WINDOW (9 SF MAX.)
A	222	4	222	9
B	200	4	200	9
C	120	4	120	9
D	108	4	108	9
E	124	4	124	9
F	100	4	100	9
G	40	4	40	9
H	84	4	84	9



**BUILDING A / EAST ELEVATION**

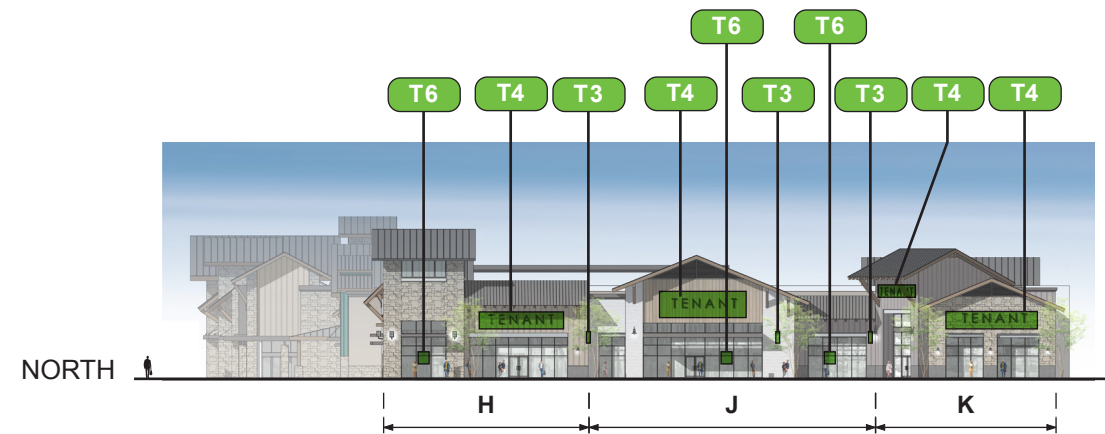
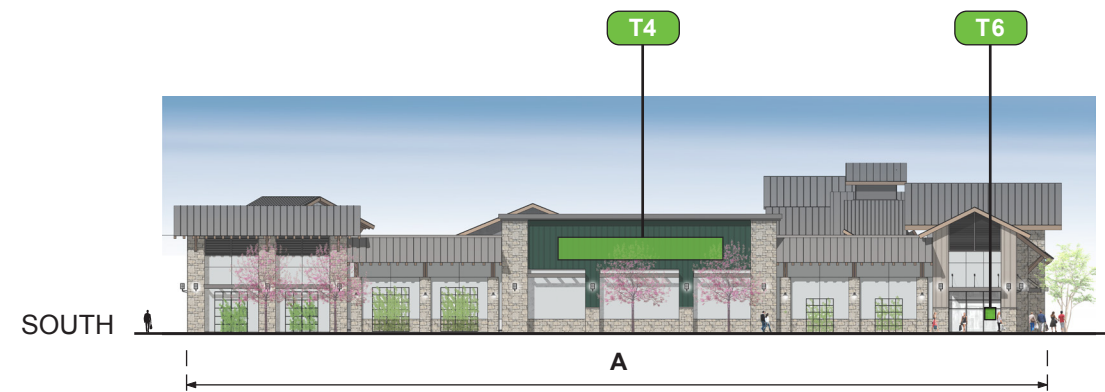
NTS

**KEY PLAN**



**PROPOSED SIGNAGE**

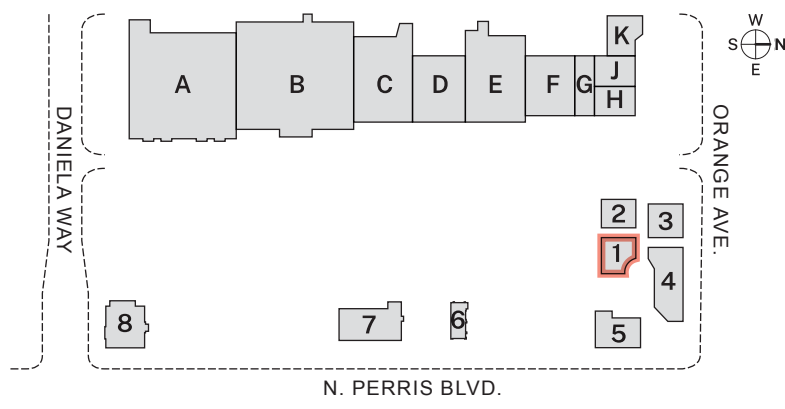
TENANT	FRONTAGE LINEAR FT	T3 BLADE (4 SF MAX.)	T4 WALL (SF FACTOR 1:1)	T6 WINDOW (9 SF MAX.)
A	246	n/a	246	9
H	60	n/a	60	9
J	64	n/a	64	9
K	80	n/a	80	9



**BUILDING A / NORTH & SOUTH ELEVATIONS**

NTS

**KEY PLAN**



**PROPOSED SIGNAGE – EAST**

TENANT	FRONTAGE LINEAR FT	T1 AWNING (FACTOR 1:1)	T4 WALL (FACTOR 1:1)	T6 WINDOW (9 SF MAX.)
A	39	n/a	39	9
B	35	n/a	n/a	

**PROPOSED SIGNAGE – WEST**

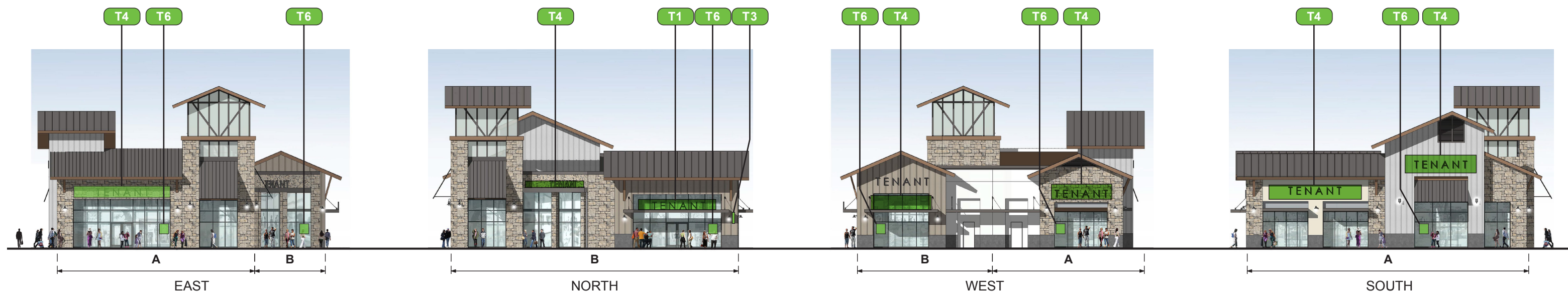
TENANT	FRONTAGE LINEAR FT	T1 AWNING (FACTOR 1:1)	T4 WALL (FACTOR 1:1)	T6 WINDOW (9 SF MAX.)
A	38	n/a	38	9
B	38	n/a	38	9

**PROPOSED SIGNAGE – NORTH**

TENANT	FRONTAGE LINEAR FT	T1 AWNING (FACTOR 1:1)	T3 BLADE (4 SF MAX.)	T4 WALL (FACTOR 1:1)	T6 WINDOW (9 SF MAX.)
B	80	80	4	80	9

**PROPOSED SIGNAGE – SOUTH**

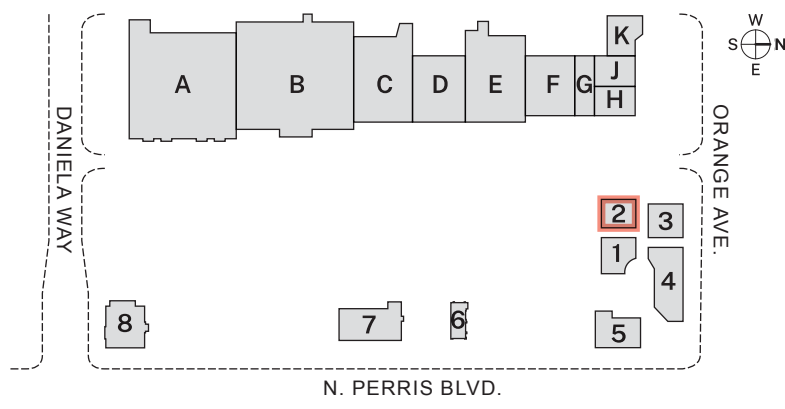
TENANT	FRONTAGE LINEAR FT	T1 AWNING (FACTOR 1:1)	T4 WALL (FACTOR 1:1)	T6 WINDOW (9 SF MAX.)
A	78	78	78	9



**PAD 1 ELEVATIONS**

NTS

### KEY PLAN



### PROPOSED SIGNAGE – EAST

TENANT	FRONTAGE LINEAR FT	T3 BLADE (4 SF MAX.)	T4 WALL (FACTOR 1:1)	T6 WINDOW (9 SF MAX.)
A	34	n/a	34	9
B	41	n/a	41	9

### PROPOSED SIGNAGE – WEST

TENANT	FRONTAGE LINEAR FT	T3 BLADE (4 SF MAX.)	T4 WALL (FACTOR 1:1)	T6 WINDOW (9 SF MAX.)
A	36	n/a	36	9
B	42	n/a	42	9

### PROPOSED SIGNAGE – NORTH

TENANT	FRONTAGE LINEAR FT	T3 BLADE (4 SF MAX.)	T4 WALL (FACTOR 1:1)	T6 WINDOW (9 SF MAX.)
B	65	4	65	9

### PROPOSED SIGNAGE – SOUTH

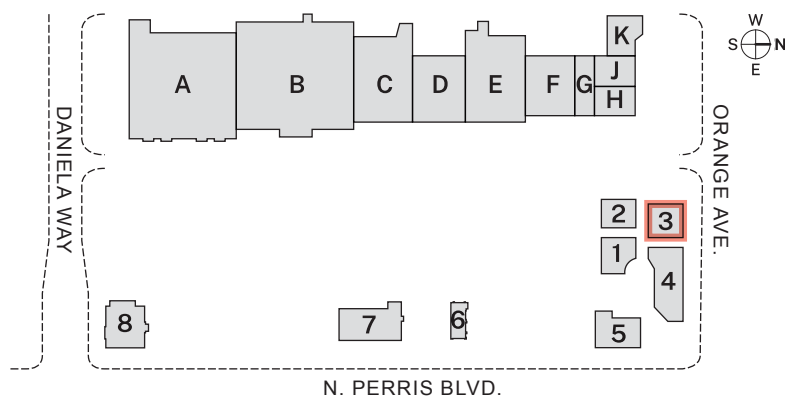
TENANT	FRONTAGE LINEAR FT	T3 BLADE (4 SF MAX.)	T4 WALL (FACTOR 1:1)	T6 WINDOW (9 SF MAX.)
A	67	n/a	65	9



Note: signs face alley

## PAD 2 ELEVATIONS

### KEY PLAN



### PROPOSED SIGNAGE – EAST

TENANT	FRONTAGE LINEAR FT	T4 WALL (FACTOR 1:1)	T6 WINDOW (9 SF MAX.)
A	77	77	9

### PROPOSED SIGNAGE – WEST

TENANT	FRONTAGE LINEAR FT	T4 WALL (FACTOR 1:1)	T6 WINDOW (9 SF MAX.)
A	76	76	9

### PROPOSED SIGNAGE – NORTH

TENANT	FRONTAGE LINEAR FT	T4 WALL (FACTOR 1:1)	T6 WINDOW (9 SF MAX.)
A	39	39	9
B	36	36	9

### PROPOSED SIGNAGE – SOUTH

TENANT	FRONTAGE LINEAR FT	T3 BLADE (4 SF MAX.)	T4 WALL (FACTOR 1:1)	T6 WINDOW (9 SF MAX.)
A	39	4	39	9
B	36	4	36	9

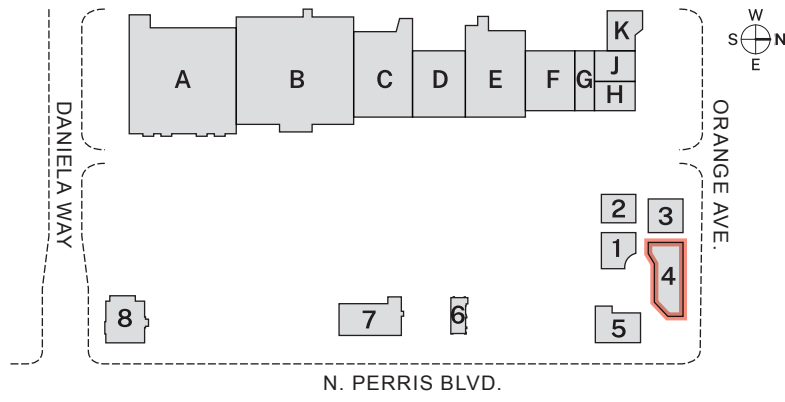


Note: signs face alley

### PAD 3 ELEVATIONS

NTS

**KEY PLAN**



**PROPOSED SIGNAGE – EAST**

TENANT	FRONTAGE LINEAR FT	T3 BLADE (4 SF MAX.)	T4 WALL (FACTOR 1:1)	T6 WINDOW (9 SF MAX.)
A	37	n/a	37	9

**PROPOSED SIGNAGE – WEST**

TENANT	FRONTAGE LINEAR FT	T3 BLADE (4 SF MAX.)	T4 WALL (FACTOR 1:1)	T6 WINDOW (9 SF MAX.)
A	75	n/a	75	9

**PROPOSED SIGNAGE – NORTH**

TENANT	FRONTAGE LINEAR FT	T3 BLADE (4 SF MAX.)	T4 WALL (FACTOR 1:1)	T6 WINDOW (9 SF MAX.)
A	33	n/a	33	9
B	24	n/a	24	9
C	24	n/a	24	9
D	24	n/a	24	9
E	23	n/a	23	9
F	26	n/a	26	9

**PROPOSED SIGNAGE – SOUTH**

TENANT	FRONTAGE LINEAR FT	T3 BLADE (4 SF MAX.)	T4 WALL (FACTOR 1:1)	T6 WINDOW (9 SF MAX.)
A	41	4	41	9
B	24	4	24	9
C	24	4	24	9
D	24	4	24	9
E	23	4	23	9
F	27	4	27	9

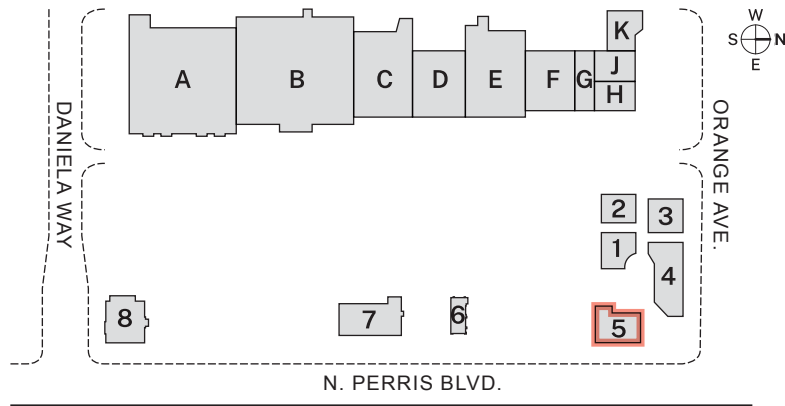


**PAD 4 ELEVATIONS**

NTS

Note: signs face alley

**KEY PLAN**



**PROPOSED SIGNAGE – EAST**

TENANT	FRONTAGE LINEAR FT	T3 BLADE (4 SF MAX.)	T4 WALL (FACTOR 1:1)	T6 WINDOW (9 SF MAX.)
	95	n/a	95	9

**PROPOSED SIGNAGE – WEST**

TENANT	FRONTAGE LINEAR FT	T3 BLADE (4 SF MAX.)	T4 WALL (FACTOR 1:1)	T6 WINDOW (9 SF MAX.)
	95	n/a	95	9

**PROPOSED SIGNAGE – NORTH**

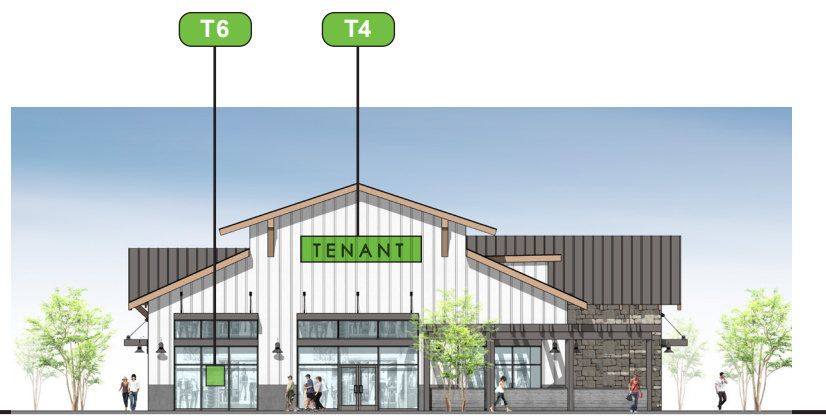
TENANT	FRONTAGE LINEAR FT	T3 BLADE (4 SF MAX.)	T4 WALL (FACTOR 1:1)	T6 WINDOW (9 SF MAX.)
	77	n/a	77	9

**PROPOSED SIGNAGE – SOUTH**

TENANT	FRONTAGE LINEAR FT	T3 BLADE (4 SF MAX.)	T4 WALL (FACTOR 1:1)	T6 WINDOW (9 SF MAX.)
	77	n/a	77	n/a



EAST



NORTH



WEST

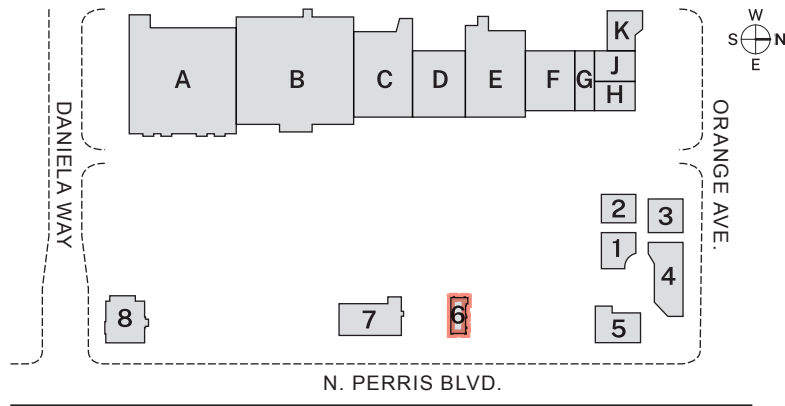


SOUTH

**PAD 5 ELEVATIONS**

NTS

**KEY PLAN**



**PROPOSED SIGNAGE – EAST**

TENANT	FRONTAGE LINEAR FT	T3 BLADE (4 SF MAX.)	T4 WALL (FACTOR 1:1)	T6 WINDOW (9 SF MAX.)
	32	n/a	32	9

**PROPOSED SIGNAGE – WEST**

TENANT	FRONTAGE LINEAR FT	T3 BLADE (4 SF MAX.)	T4 WALL (FACTOR 1:1)	T6 WINDOW (9 SF MAX.)
	32	n/a	32	n/a

**PROPOSED SIGNAGE – NORTH**

TENANT	FRONTAGE LINEAR FT	T3 BLADE (4 SF MAX.)	T4 WALL (FACTOR 1:1)	T6 WINDOW (9 SF MAX.)
	75	n/a	75	n/a

**PROPOSED SIGNAGE – SOUTH**

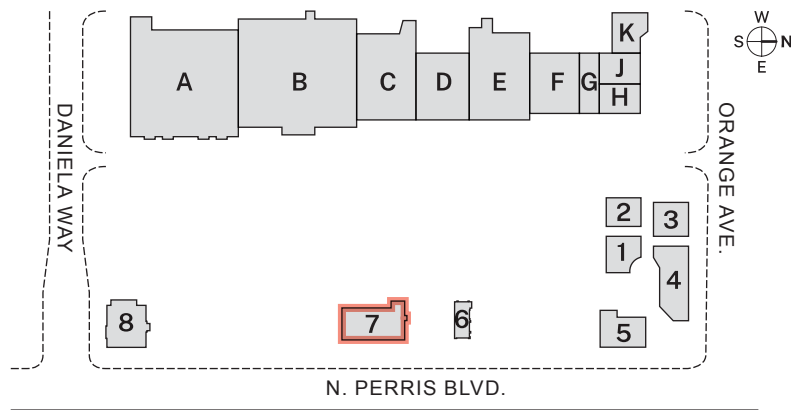
TENANT	FRONTAGE LINEAR FT	T3 BLADE (4 SF MAX.)	T4 WALL (FACTOR 1:1)	T6 WINDOW (9 SF MAX.)
	75	n/a	75	9



**PAD 6 ELEVATIONS**

NTS

**KEY PLAN**



**PAD 7 ELEVATIONS**

NTS

**PROPOSED SIGNAGE – EAST**

TENANT	FRONTAGE LINEAR FT	T3 BLADE (4 SF MAX.)	T4 WALL (FACTOR 1:1)	T6 WINDOW (9 SF MAX.)
A	27	n/a	27	n/a
B	24	n/a	24	n/a
C	24	n/a	24	n/a
D	20	n/a	20	n/a
E	35	n/a	35	n/a

**PROPOSED SIGNAGE – WEST**

TENANT	FRONTAGE LINEAR FT	T3 BLADE (4 SF MAX.)	T4 WALL (FACTOR 1:1)	T6 WINDOW (9 SF MAX.)
A	27	n/a	27	9
B	24	n/a	24	9
C	24	n/a	24	9
D	20	n/a	20	9
E	35	n/a	35	9

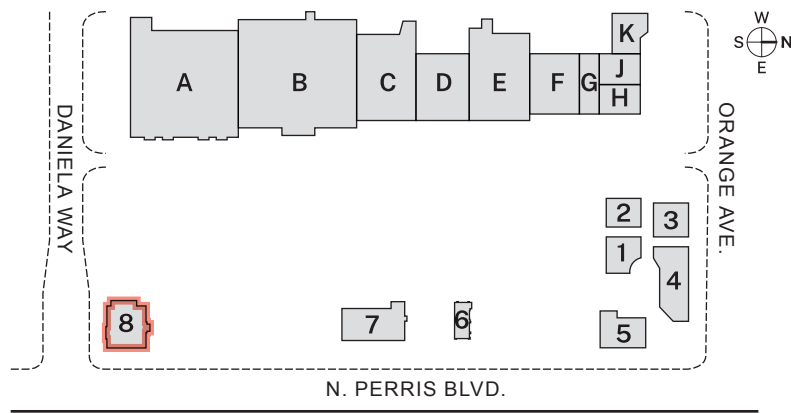
**PROPOSED SIGNAGE – NORTH**

TENANT	FRONTAGE LINEAR FT	T3 BLADE (4 SF MAX.)	T4 WALL (FACTOR 1:1)	T6 WINDOW (9 SF MAX.)
E	80	n/a	80	9

**PROPOSED SIGNAGE – SOUTH**

TENANT	FRONTAGE LINEAR FT	T3 BLADE (4 SF MAX.)	T4 WALL (FACTOR 1:1)	T6 WINDOW (9 SF MAX.)
A	67	n/a	67	9

**KEY PLAN**



**PROPOSED SIGNAGE – EAST**

TENANT	FRONTAGE LINEAR FT	T3 BLADE (4 SF MAX.)	T4 WALL (FACTOR 1:1)	T6 WINDOW (9 SF MAX.)
	32	n/a	32	9

**PROPOSED SIGNAGE – WEST**

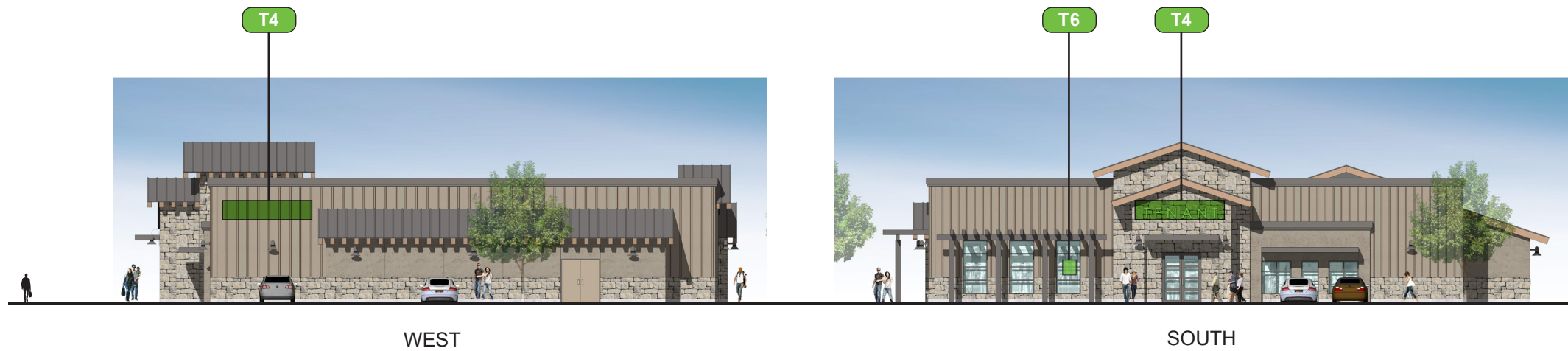
TENANT	FRONTAGE LINEAR FT	T3 BLADE (4 SF MAX.)	T4 WALL (FACTOR 1:1)	T6 WINDOW (9 SF MAX.)
	32	n/a	32	n/a

**PROPOSED SIGNAGE – NORTH**

TENANT	FRONTAGE LINEAR FT	T3 BLADE (4 SF MAX.)	T4 WALL (FACTOR 1:1)	T6 WINDOW (9 SF MAX.)
	75	n/a	75	9

**PROPOSED SIGNAGE – SOUTH**

TENANT	FRONTAGE LINEAR FT	T3 BLADE (4 SF MAX.)	T4 WALL (FACTOR 1:1)	T6 WINDOW (9 SF MAX.)
	75	n/a	75	9



**PAD 8 ELEVATIONS**

NTS

# Signage Criteria & Reference

**S1: FREEWAY MONUMENT/PYLON IDENTITY**

**Sec. 19.75.070 Defintion: FREEWAY SIGN**

“Freeway sign means a sign located on the same parcel as the entity it identifies and such parcel is located within 660 feet of the nearest edge of a freeway right-of-way line.”

**CODE CONSIDERATIONS (SEC. 19.75.100)**

**Sec. 19.75.100 (b4):**

- 100 sf / 25’ height max
- 100 sf / 50’ height max within 300 ft off freeway

**Sec. 19.75.100 (b4b):**

“A maximum of one freeway sign shall be allowed per parcel or site.”

**Sec. 19.75.100 (b4e):**

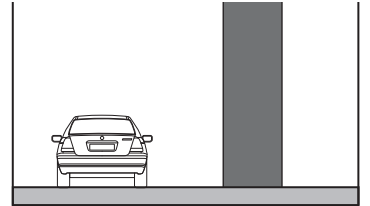
“Joint use freeway signs identifying more than one site/business may have a total sign area of 150 square feet . . .”

**Sec. 19.75.100 (b4e2):**

“Joint use signs may only identify businesses . . . not to exceed a total of two.”

**Sec. 19.75.100 (b4e4):**

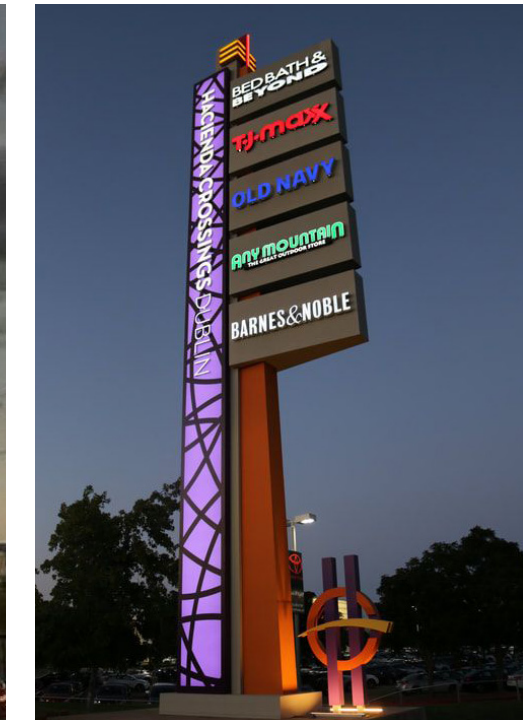
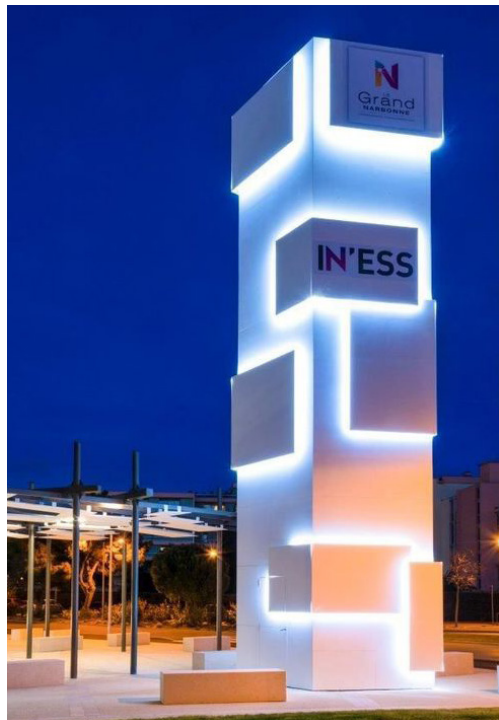
“Only one freeway sign shall be permitted per site/business irrespective of whether a singular or joint use freeway sign is used.”



**S1** FREEWAY MONUMENT/PYLON IDENTITY



**REFERENCE IMAGERY**



**S2: FREESTANDING MONUMENT/PYLON IDENTITY**

**Sec. 19.75.070 Defintion: FREESTANDING SIGN**

“Freestanding sign means a sign permanently supported by one or more uprights, braces, poles, or other similar structural components attached to the ground or any foundation set in or upon the ground as a support base.”

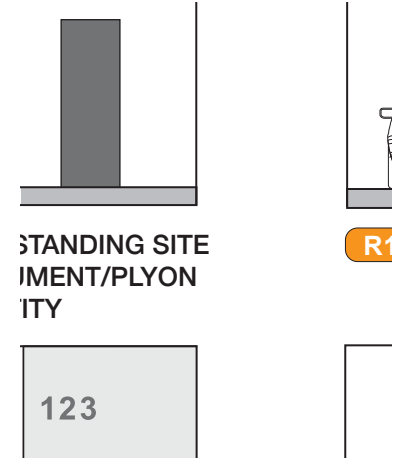
**CODE CONSIDERATIONS (SEC. 19.75.100)**

**Sec. 19.75.100 (b1c2): Complex Identification**

(i) “Small complex (less than 5 acres): Maximum of 2 monument signs, one per street frontage, with each sign area not to exceed 32 square feet and 5 feet in height from finished grade.”

(ii) “Median complex (5–15 acres): Maximum of 2 monument or pylon signs, one per street frontage, with each sign area not to exceed 50 square feet and 6 feet in height for monument signs, and 100 square feet and 20 feet in height for pylon signs, as measured from finished grade.”

(iii) “Large complex (15–25 acres): **Maximum of 2 monument or pylon signs, one per street frontage, with each sign area not to exceed 75 square feet and 8 feet in height for monument signs, and 150 square feet and 20 feet in height for pylon signs,** as measured from finished grade.”



**REFERENCE IMAGERY**



T1: TENANT AWNING/MARQUEE IDENTITY

Sec. 19.75.070 Definition: AWNING SIGN

“Any sign copy or logo mounted or attached to, or painted, on an awning.”

CODE CONSIDERATIONS (SEC. 19.75.100)

Sec. 19.75.100 (a3b):

“Signs shall only be allowed on the front face or valance of the awning, but are allowed on all faces of marquees.”

Sec. 19.75.100 (a3c):

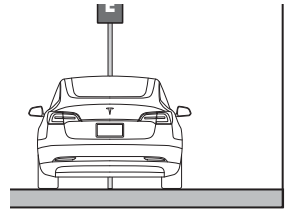
“Lettering shall not exceed a height of 8 inches and symbols/logos shall not exceed a height of 12 inches.”

Sec. 19.75.100 (a3e):

“Awning and marquee signs shall be illuminated by external lighting only.”

Sec. 19.75.100 (a3f):

“Signage area on an awning or marquee will be included in the total allowable sign area of the building frontage on which it is located.”



EV PARKING



REFERENCE IMAGERY



T2: TENANT FREESTANDING MONUMENT/PYLON IDENTITY

Sec. 19.75.070 Definitions: MONUMENT, PYLON

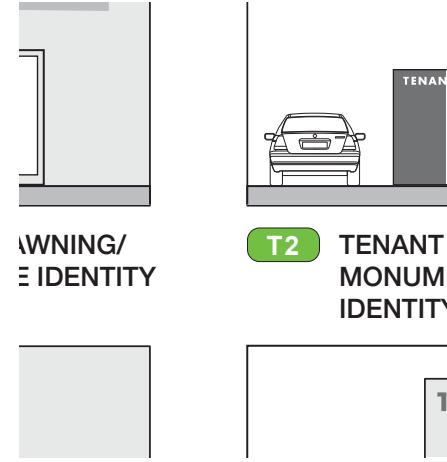
“Monument sign means a low profile, freestanding sign supported by a solid base as opposed to poles or open braces.”

“Pylon sign means a high profile sign over 6 feet in height having a solid support permanently attached directly into or upon the ground.”

CODE CONSIDERATIONS (SEC. 19.75.100)

Sec. 19.75.100 (b):  
 “Monument or other types of freestanding signs such as pylon signs are permitted in addition to wall signs for **occupants of individual pad tenant and multi-tenant buildings**, based on site development and size criteria. Signs shall be located to be directed toward a parking lot, major pedestrian access, street, driveway or alley. . . **placed as near to the middle of the street frontage as practical or at a major driveway entrance to the complex from the street frontage**. Signs shall be separated by 300 feet on public streets.”

- Sec. 19.75.100 (b1c1):
- 1–10,000 sf: max **20 sf / 4' ht**
  - 10,000–30,000 sf: max **32 sf / 5' ht**
  - 30,000+ sf: max **50 sf / 5' ht**



REFERENCE IMAGERY



T3: TENANT UNDER-CANOPY IDENTITY

Sec. 19.75.070 Defintion: UNDER-CANOPY sign not defined.

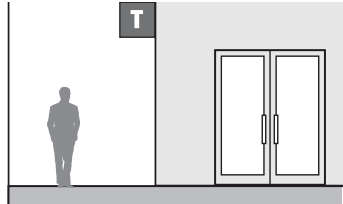
Sec. 19.75.070 Defintion: PROJECTING SIGN

“Sign, projecting, means a sign which protrudes from a building or structure.”

CODE CONSIDERATIONS (SEC. 19.75.100)

Sec. 19.75.100 (a4):

“For each use of occupancy, one under-canopy sign, and no sign exceeding 9 square feet shall be permitted.”



T3 TENANT PROJECTING IDENTITY

REFERENCE IMAGERY



**T4: TENANT WALL IDENTITY**

**Sec. 19.75.070 Defintion: WALL SIGN**

“Wall sign means a sign attached or erected upon a wall of a building or structure.”

**T5: TENANT WALL IDENTITY: HIGH**

**Sec. 19.75.070 Defintion: WALL SIGN**

“Wall sign means a sign attached or erected upon a wall of a building or structure.”

**CODE CONSIDERATIONS (SEC. 19.75.100)**

**Sec. 19.75.100 (a1):**

“ . . . maximum of one square foot of sign per lineal foot of frontage of lease space . . . not to exceed 200 square feet of total sign area.”

**Sec. 19.75.100 (a1b):**

“The width of each wall sign shall not exceed 80 percent of the linear width of the building elevation.”

**Sec. 19.75.100 (a1d):**

“ . . . in lieu of signs on the second and third floors, one sign may be placed as near the top of the building . . . on each frontage . . . ”



ACCESSIBLE VAN  
PARKING



WALL



T5 TEN  
IDEI

**SIGNS [E]**



**REFERENCE IMAGERY**



T6: TENANT WINDOW SIGN

Sec. 19.75.070 Defintion: WINDOW SIGN

“Window sign means a sign painted or otherwise attached to a window for the purpose of outside display.”

CODE CONSIDERATIONS

Sec. 19.75.070:

“Window area shall be computed by calculating each window pane or panel. The area shall be separate for each window. A group of window panes or panels may be considered one window if they are adjoining and less than six inches apart.”

Sec. 19.75.100 (a2):

“For each use or occupancy, one window sign for each public entrance, and no sign exceeding 9 square feet shall be permitted.”



T6 TENANT WINDOW IDENTITY

REFERENCE IMAGERY



**Selbert  
Perkins  
Design.**

