

- Apartment Building Amenities:**
1. Central Pool
 2. Spa
 3. Kid's Pool
 4. Lounge Community Room
 5. Fitness Gym
 6. Outdoor Lounge Areas
 7. Central Mail Delivery and Package Storage
 8. Solar Panel Covered Parking Spaces
 9. Electric Vehicle Charging Stations
 10. Outdoor Garden / Lawn areas
 11. Barbeque Stations
 12. Central Lobby and Access Control
 13. Gated Facility with Secure Entry
 14. Access to Public Self Storage and Restaurants.
 15. Bike Racks
 16. Pool-side Restrooms
- In Room Amenities:**
- A. Washer Dryer
 - B. Walk-in Closets
 - C. Open Floor plan
 - D. Efficient Energy Appliances.

COLORS AND MATERIALS

| | | |
|----|--------------------------------|--------------------------------------|
| 1 | Glazing | Milgard |
| 2 | Storefront | Anodized Aluminum, Dark Bronze |
| 3 | CMU | Orco |
| 4 | Brick Veneer | Belden Brick |
| 5 | Painted Stucco | Sherwin Williams |
| 6 | Fiber Cement Board Siding | James Hardie |
| 7 | Corrugated Metal | Atas |
| 8 | Metal Panel/Metal Trim | Pure Freeform |
| 9 | Metal Awning | Mapes Architectural Canopies |
| 10 | BOH Doors/Garage Roll-up Doors | Paint - Sherwin Williams |
| 11 | Soffit/Aluminum Simulated Wood | Pure Freeform Simulated Wood Texture |
| 12 | Stone Veneer | Colorado Stone |



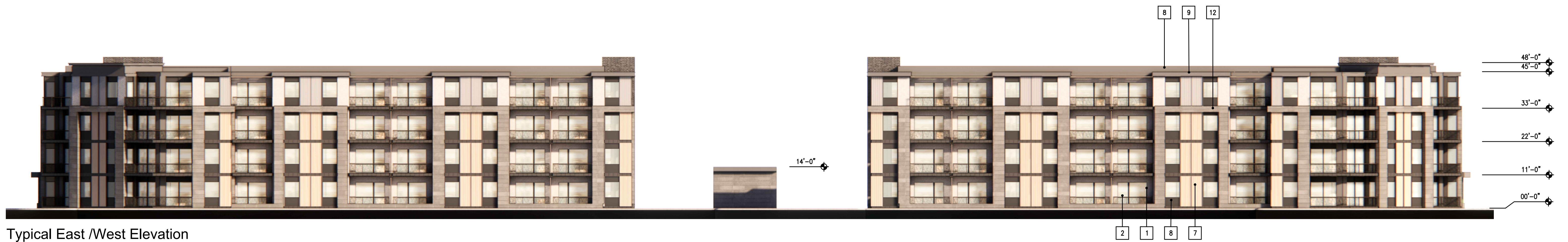
Rendering



Typical North and South Elevation

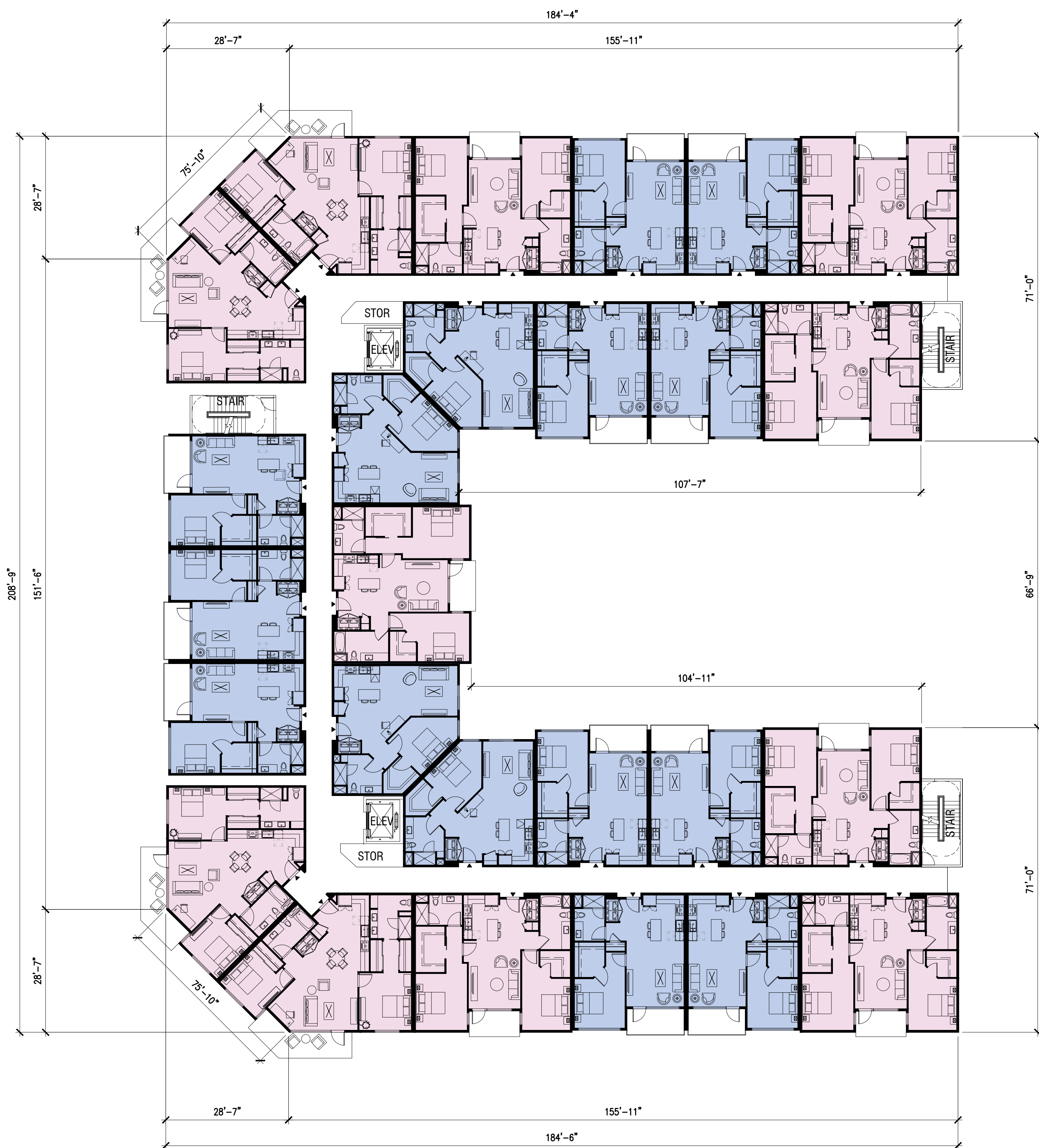


Typical Carport

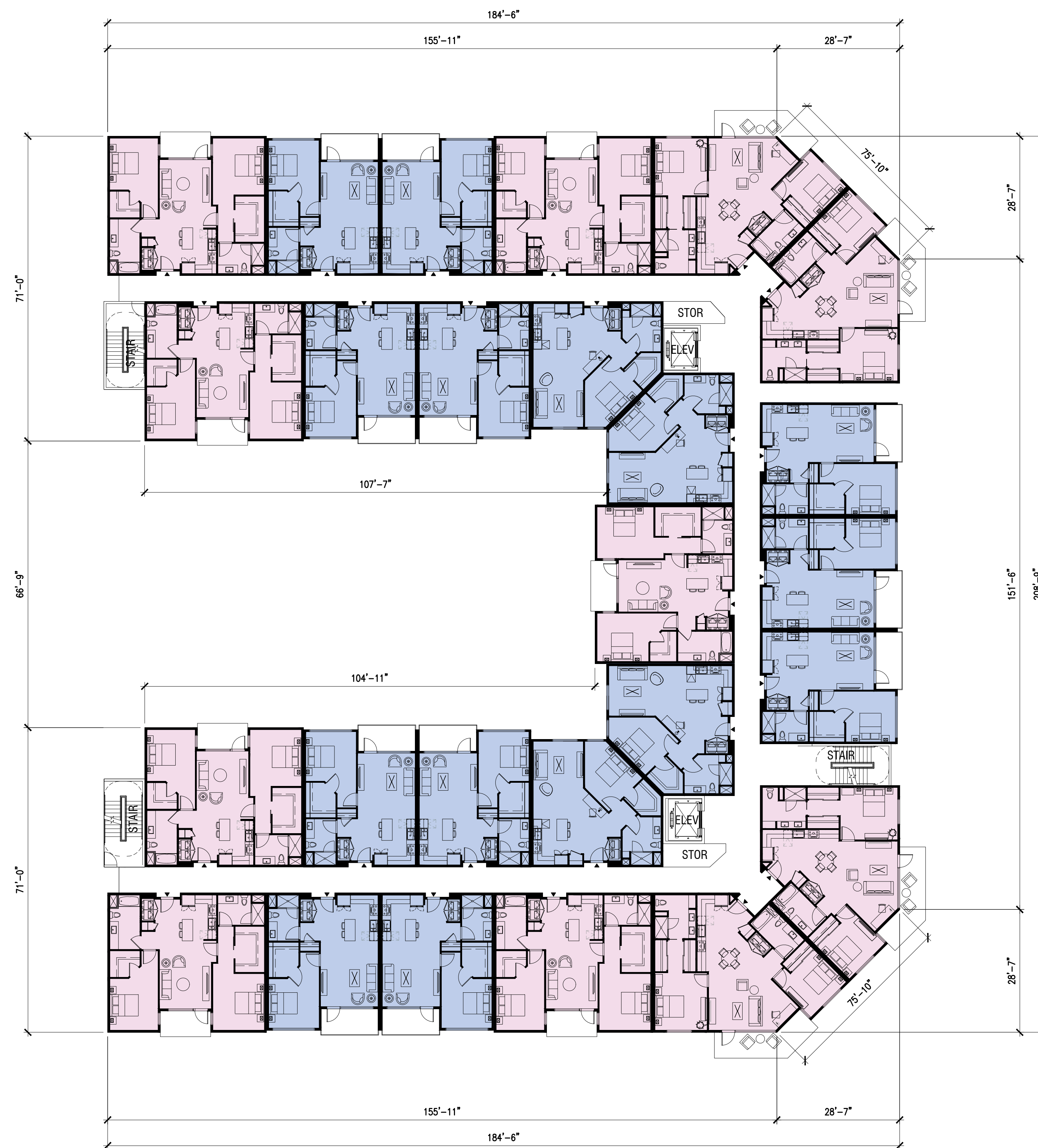
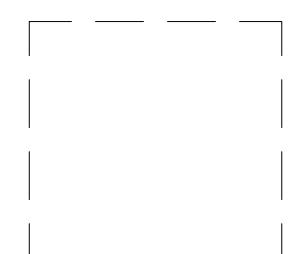


Typical East /West Elevation

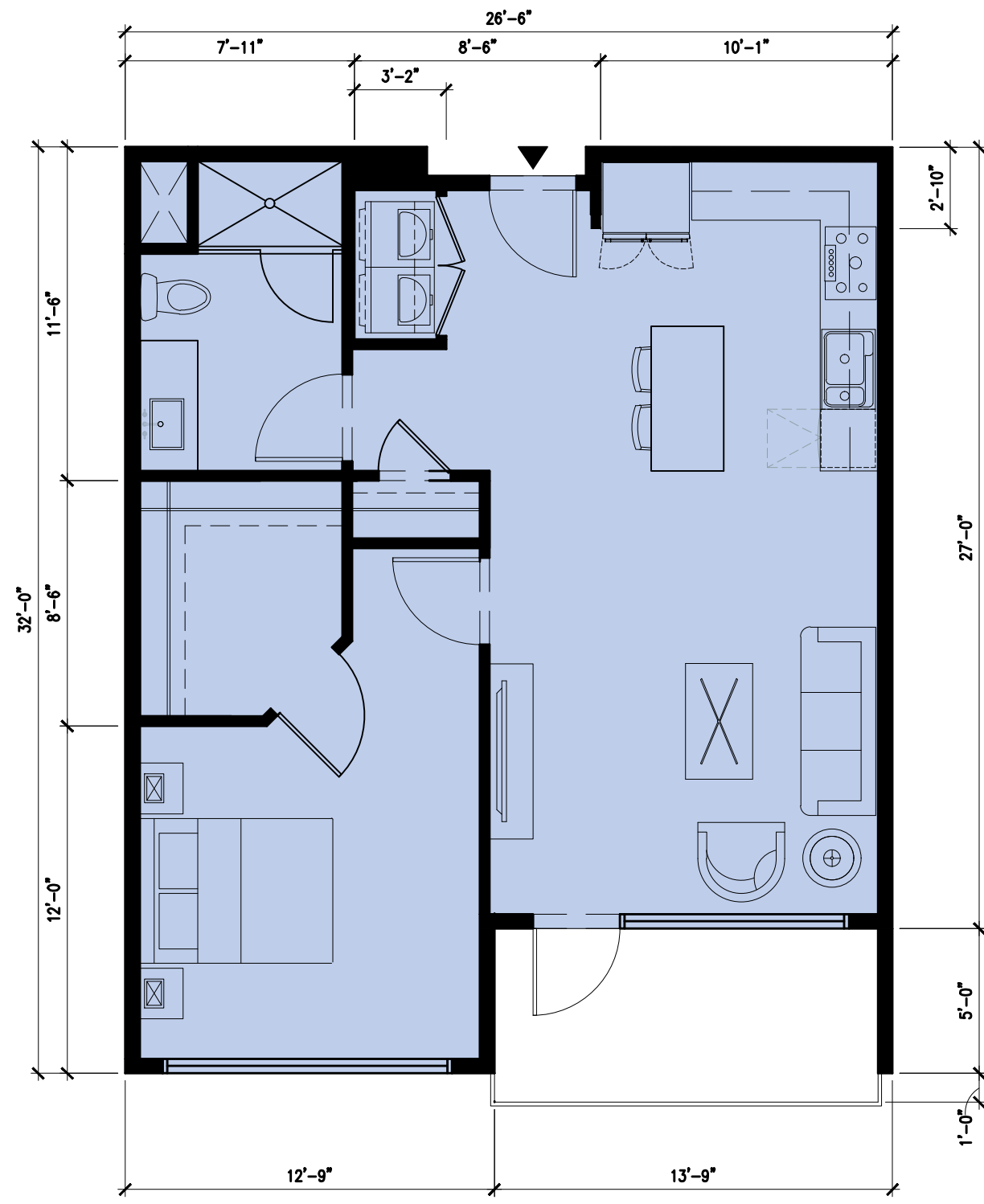




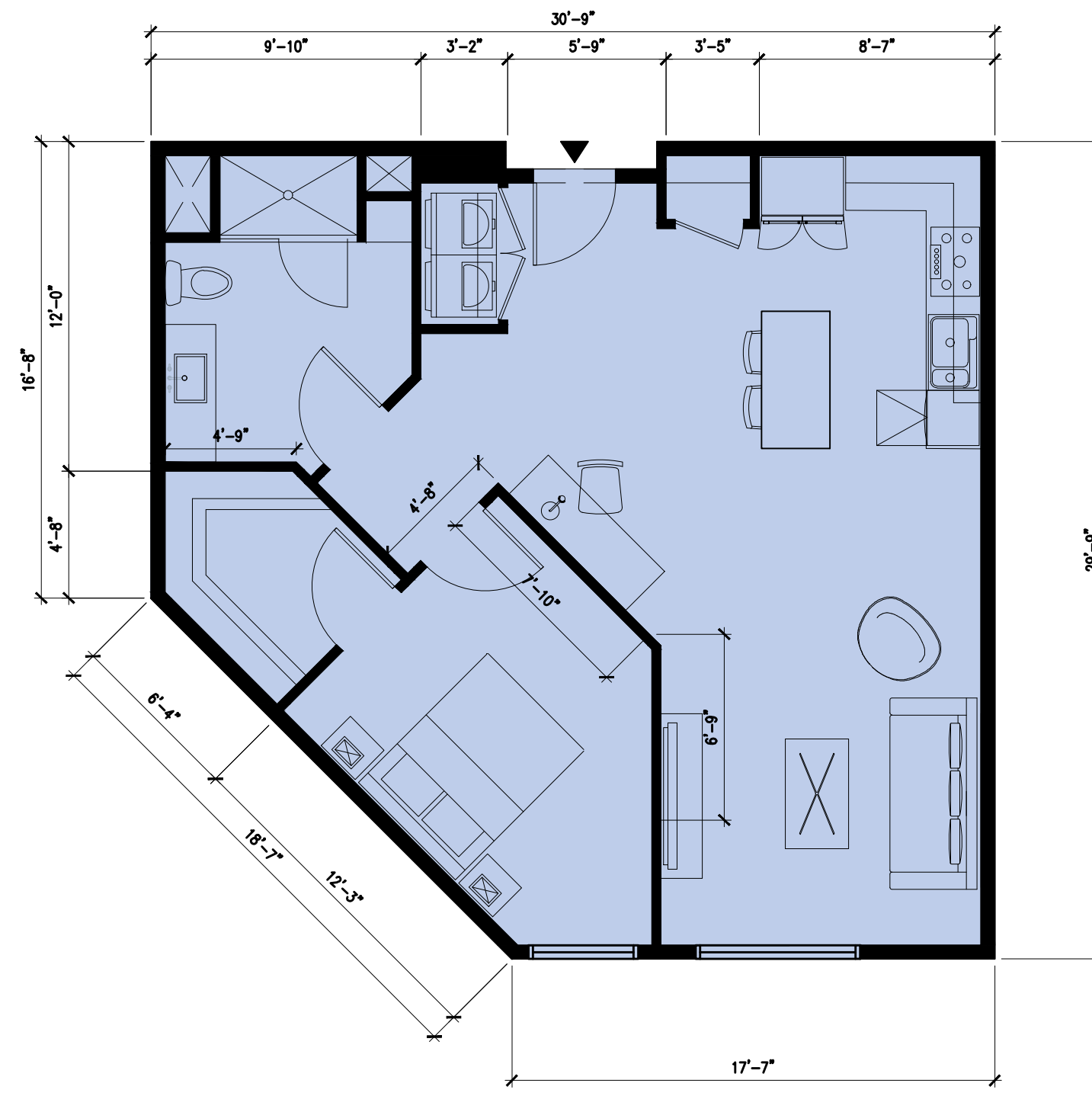
RESIDENTIAL - BUILDING 1



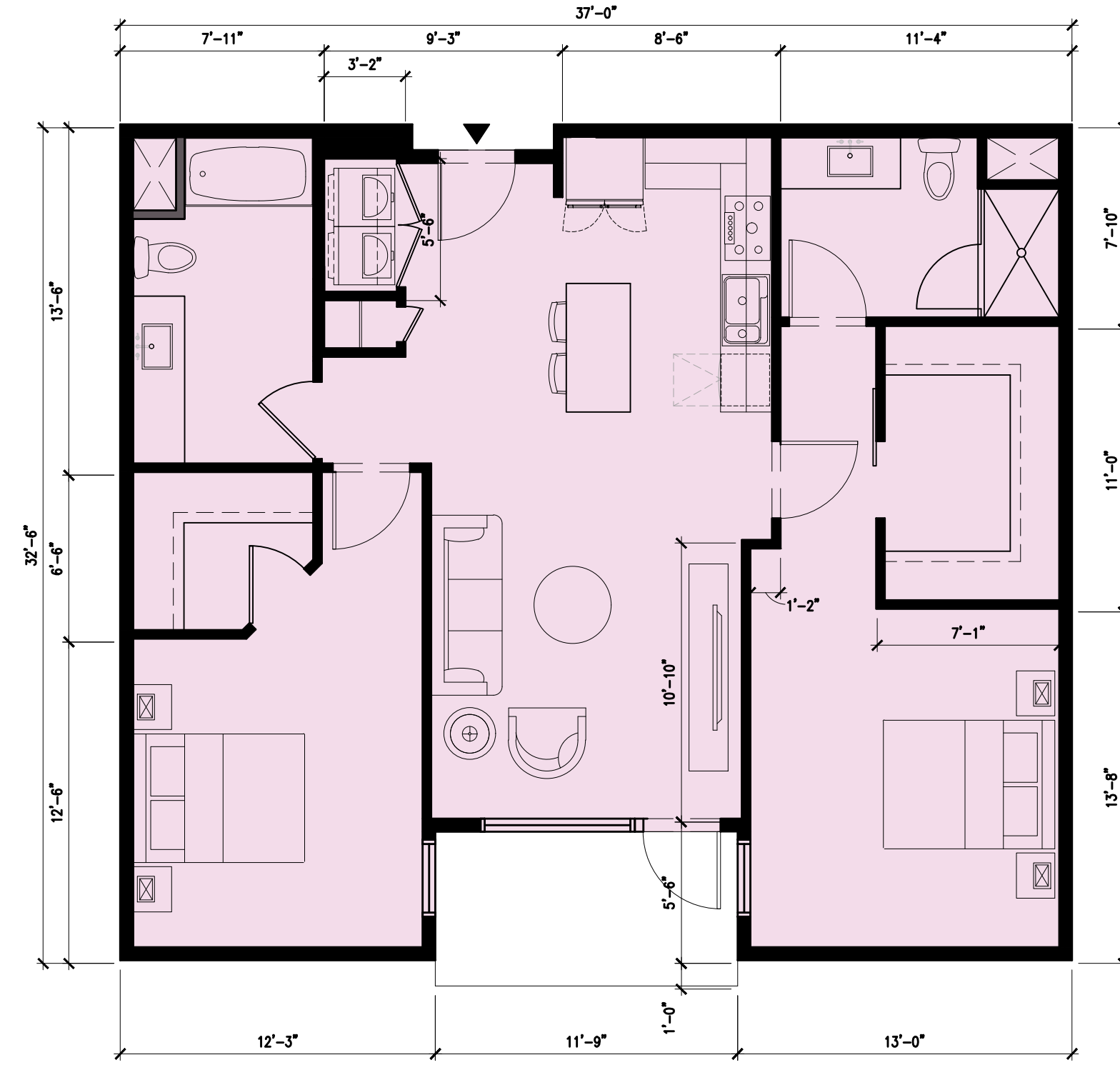
RESIDENTIAL - BUILDING 2



1-Bedroom, 1 Bathroom
742 SF



1-Bedroom, 1 Bathroom
795 SF



2-Bedroom, 2 Bathroom
1,103 SF



2-Bedroom, 2 Bathroom
1,145 SF

EAST DAWES STREET

FENCE

COVERED P/

COVER PARKII

COVER PARKII

BUILDING 1 RESIDENTIAL
102 UNITS

BUILDING 2 RESIDENTIAL
102 UNITS

COVERED PARKING

COVERED PARKING

101 PARKING SPACES

GATE

PROPERTY LINE

FENCE

POOL

GATE

BUILDING 1 SELF-STORAGE
1-LEVEL (12,600 SF)

BUILDING 2 - SELF-STORAGE
2-LEVEL
(24,500 SF PER LEVEL)

BUILDING 4 - SELF-STORAGE
2-LEVEL
(15,400 SF PER LEVEL)

BUILDING 3 - SELF-STORAGE
2-LEVEL
(24,500 SF PER LEVEL)

BUILDING 6
SELF-STORAGE
2-LEVEL
(5,500 SF PER LEVEL)

BUILDING 5 -
SELF-STORAGE
2-LEVEL
(13,300 SF PER LEVEL)

ADJACENT
CAMPER RESORT
CLUBHOUSE

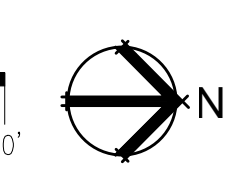
RV PARKING
12'x50'
(13 spaces)

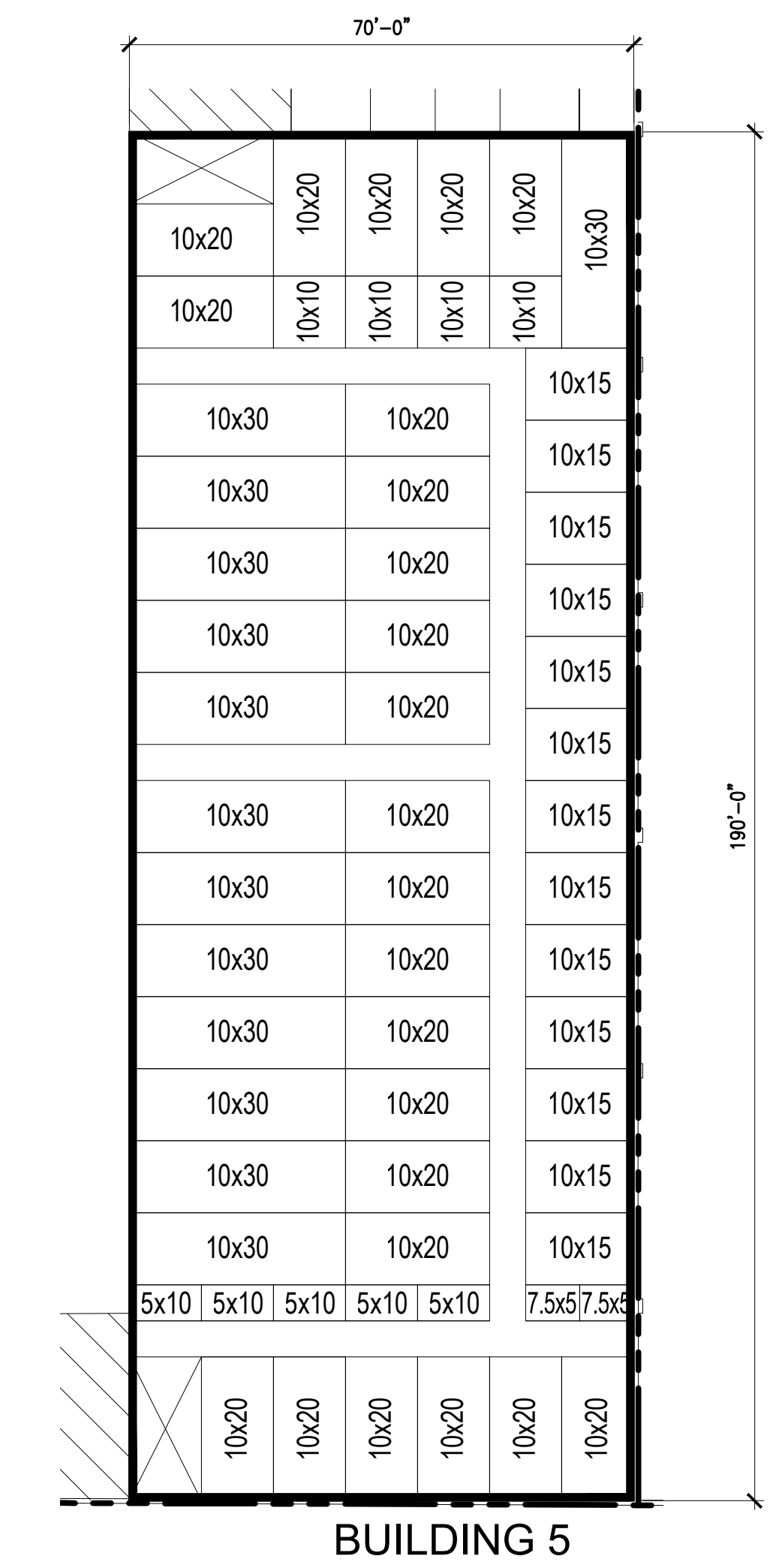
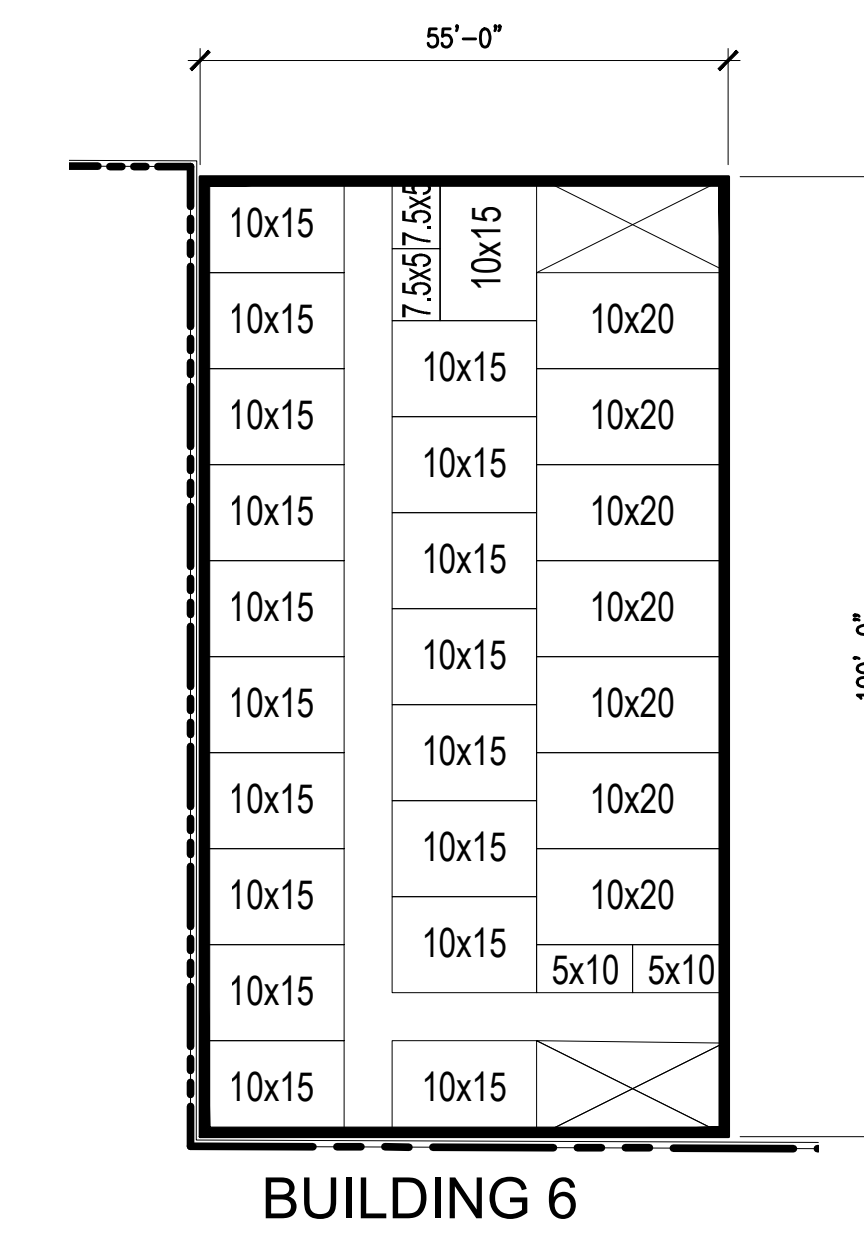
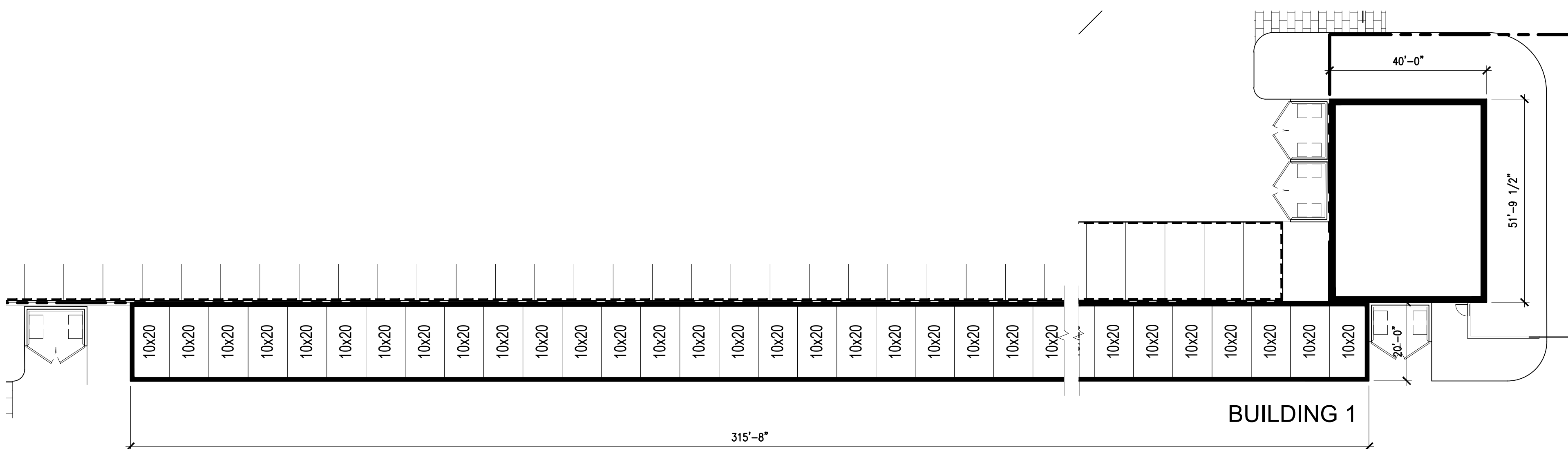
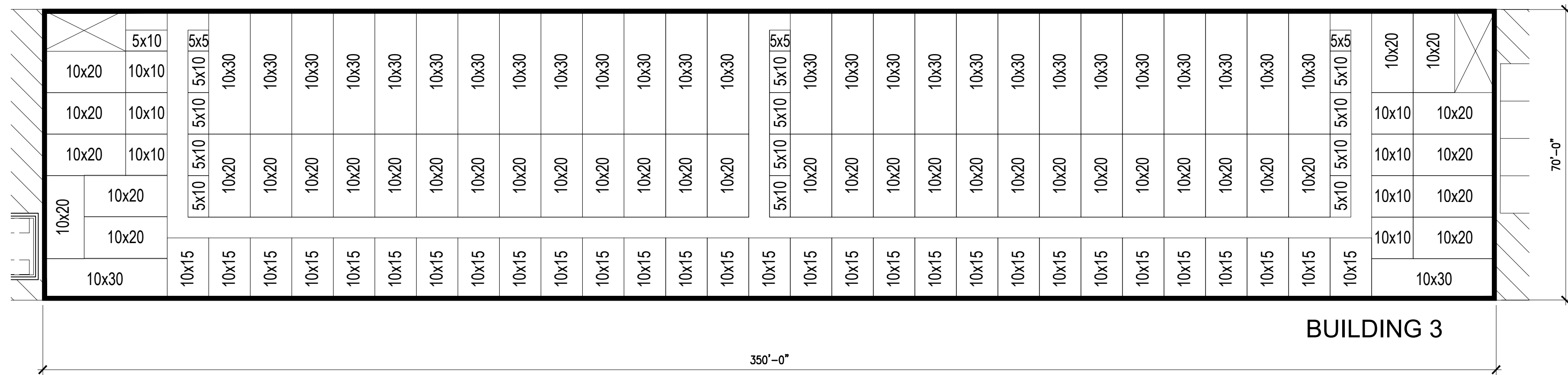
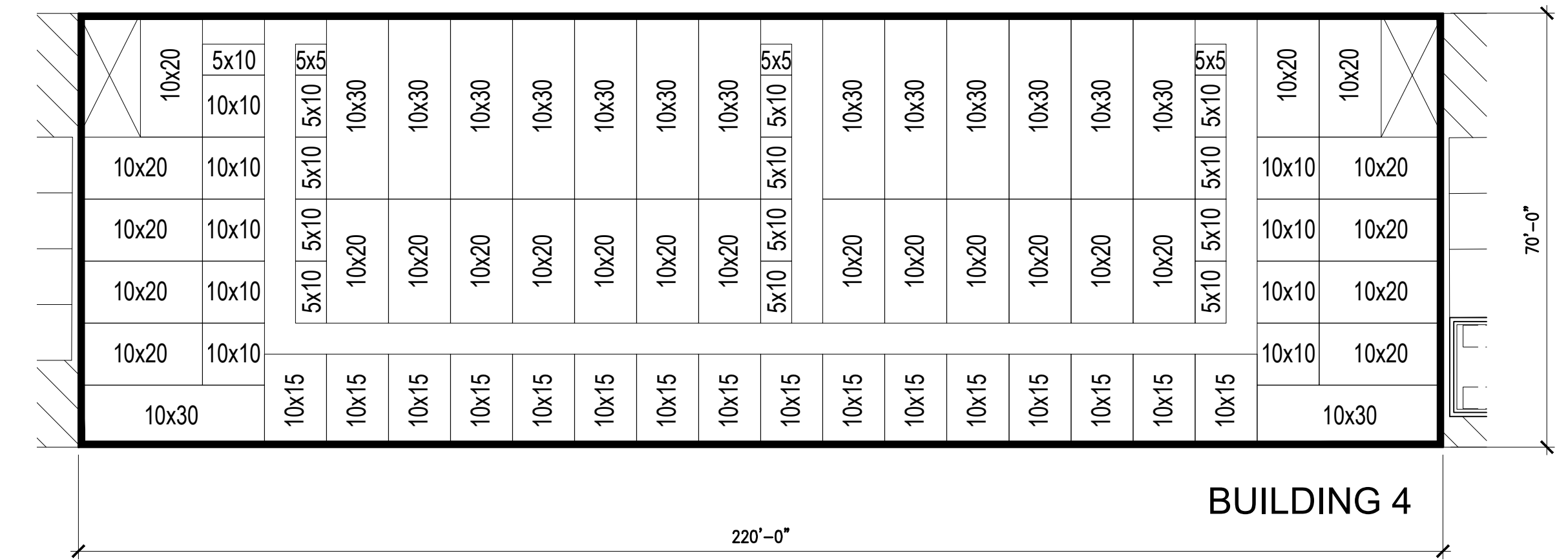
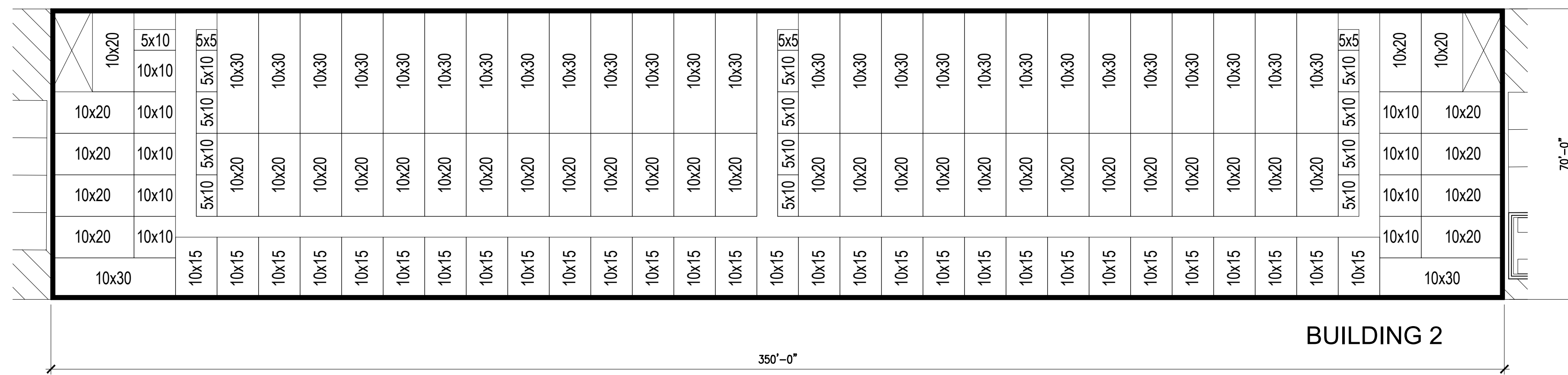
RV PARKING
12'x40'
(30 spaces)

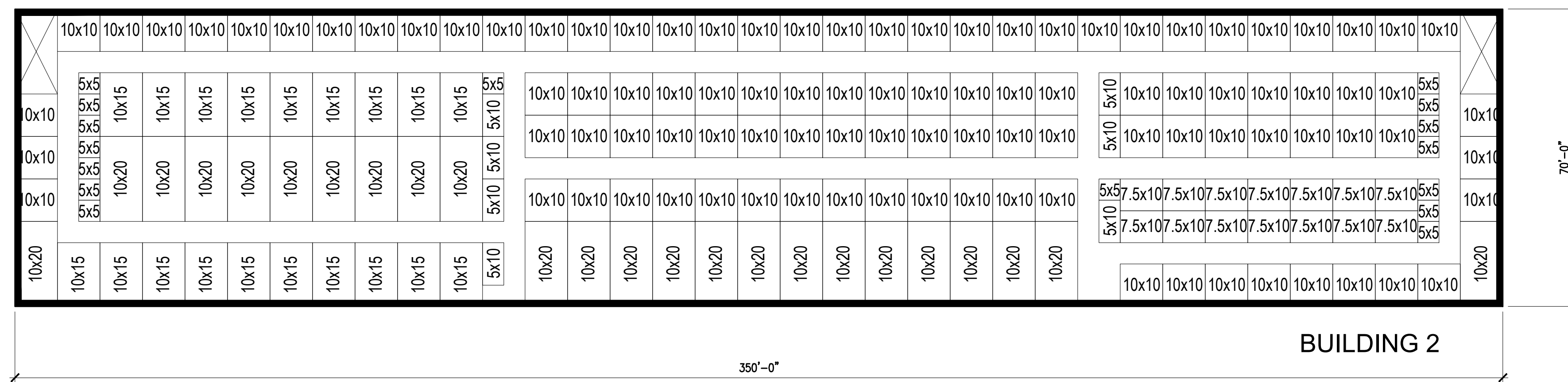
COVERED PARKING

MOUNTAIN SHADOWS RV RESORT

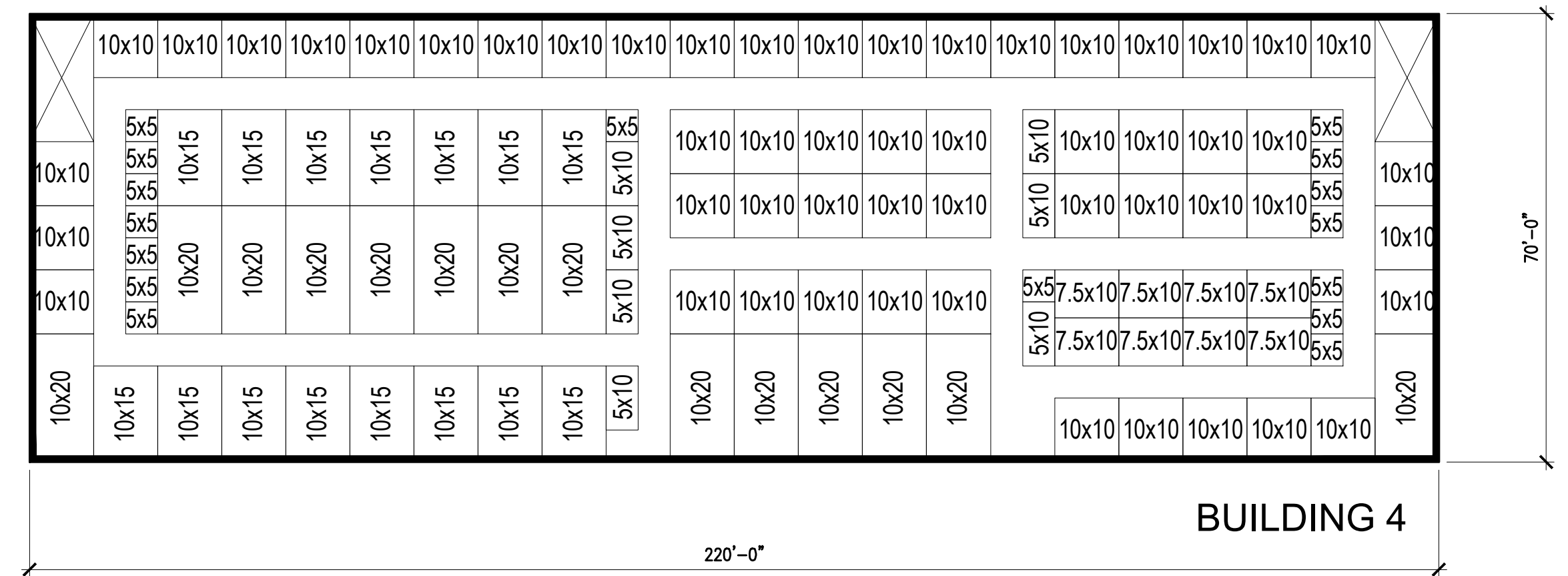
MOUNTAIN SHADOWS F



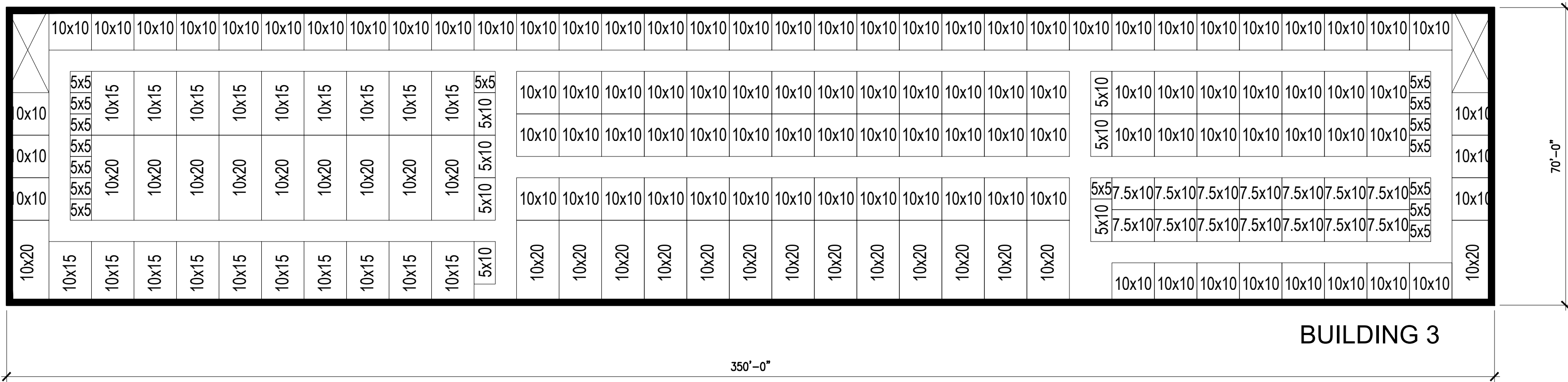




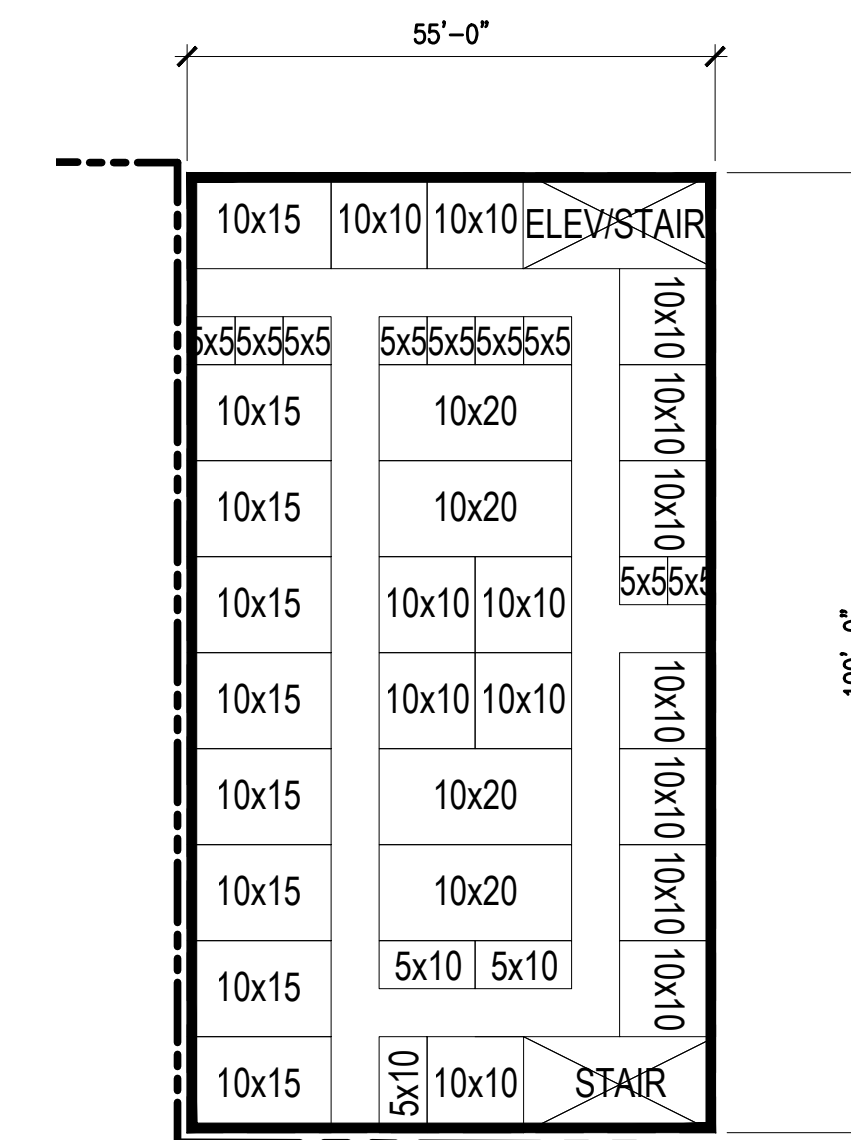
BUILDING 2



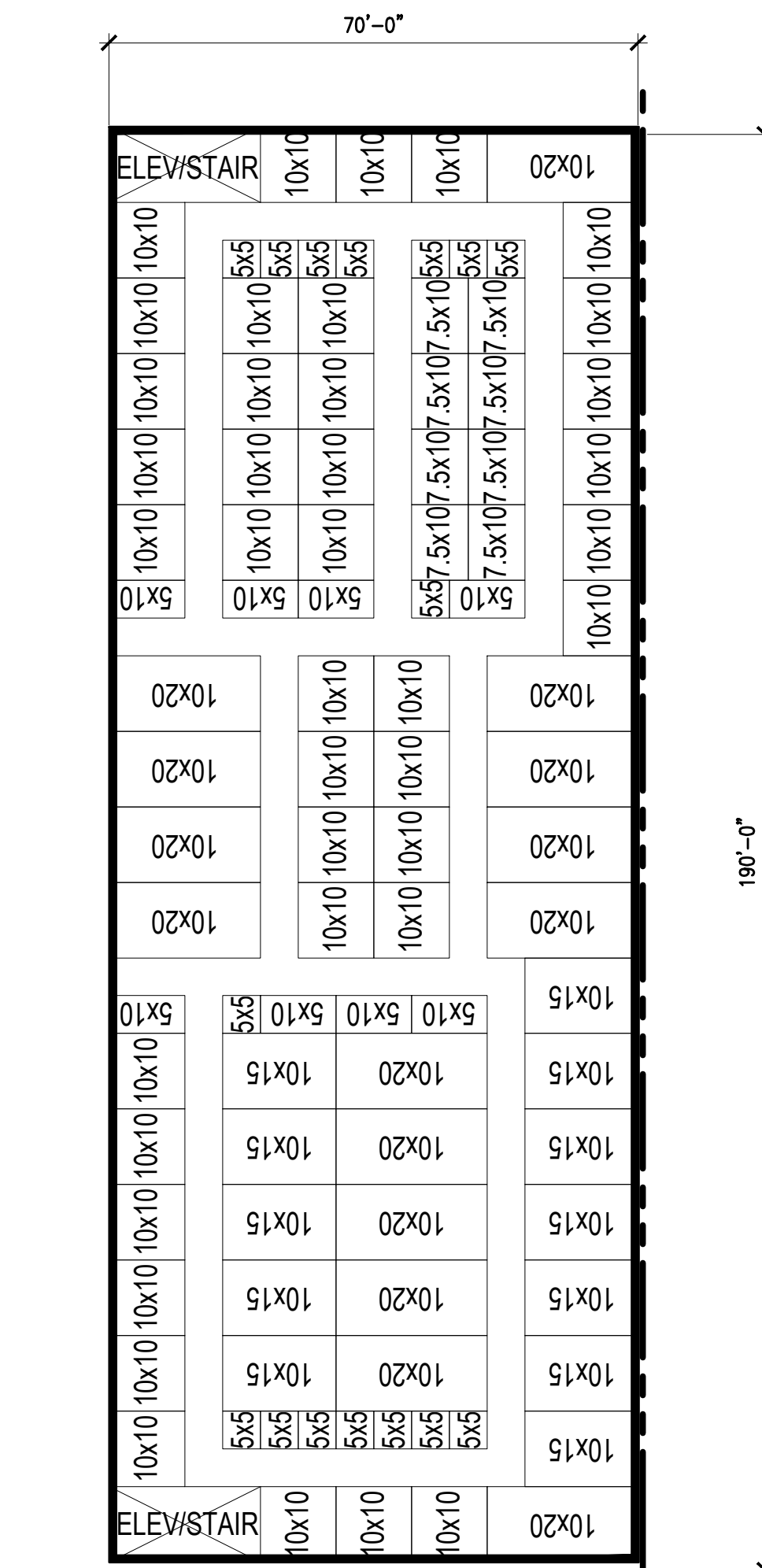
BUILDING 4



BUILDING 3

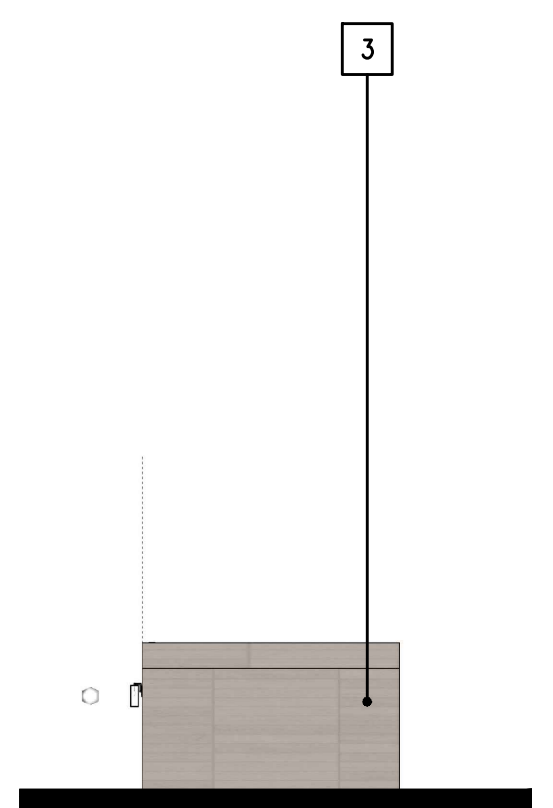


BUILDING 6

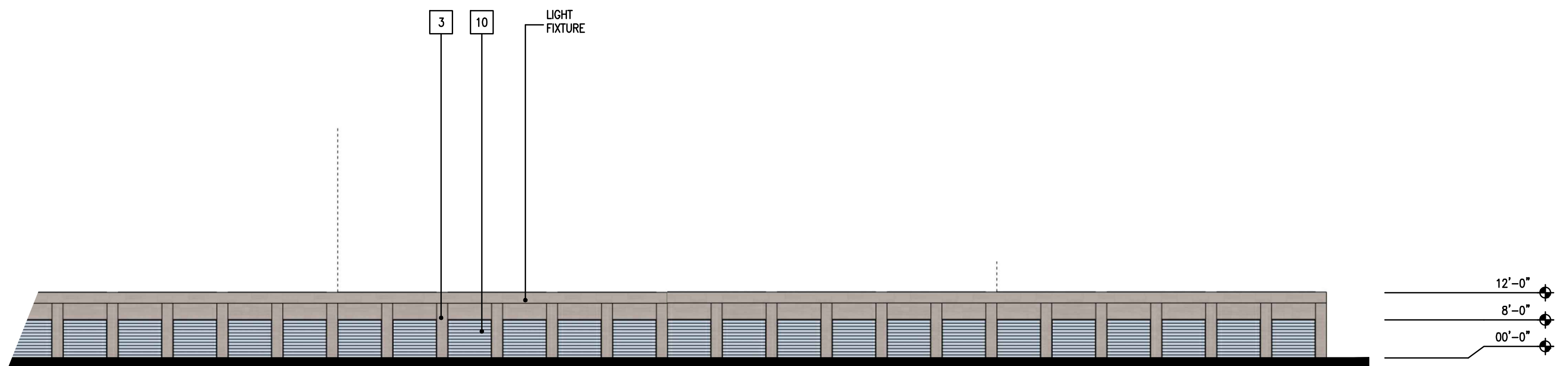


BUILDING 5

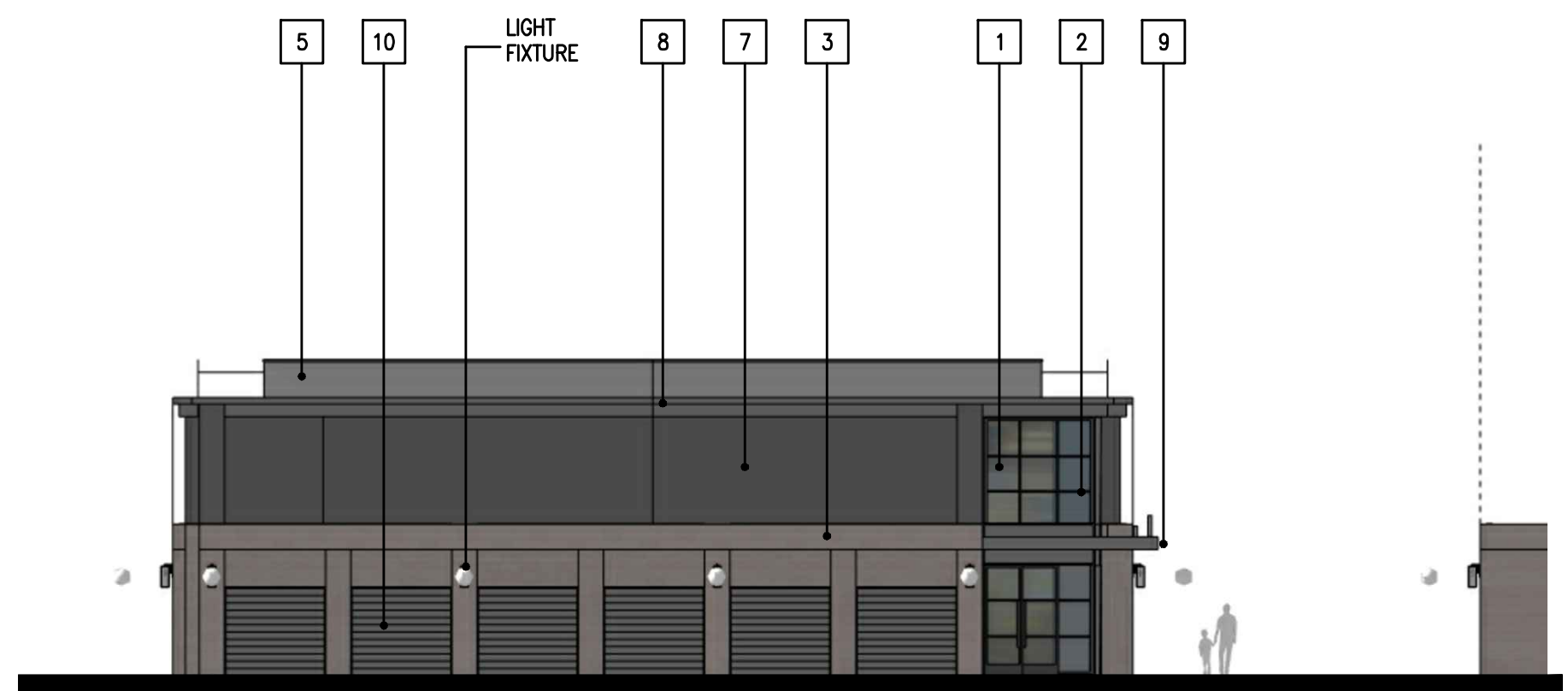
| COLORS AND MATERIALS | | |
|----------------------|--------------------------------|--------------------------------|
| 1 | Glazing | Milgard |
| 2 | Storefront | Anodized Aluminum, Dark Bronze |
| 3 | CMU | Orco |
| 4 | Brick Veneer | Belden Brick |
| 5 | Painted Stucco | Sherwin Williams |
| 6 | Fiber Cement Board Siding | James Hardie |
| 7 | Corrugated Metal | Atlas |
| 8 | Metal Panel/Metal Trim | Pure Freeform |
| 9 | Metal Awning | Mapes Architectural Canopies |
| 10 | BOH Doors/Garage Roll-up Doors | Paint - Sherwin Williams |



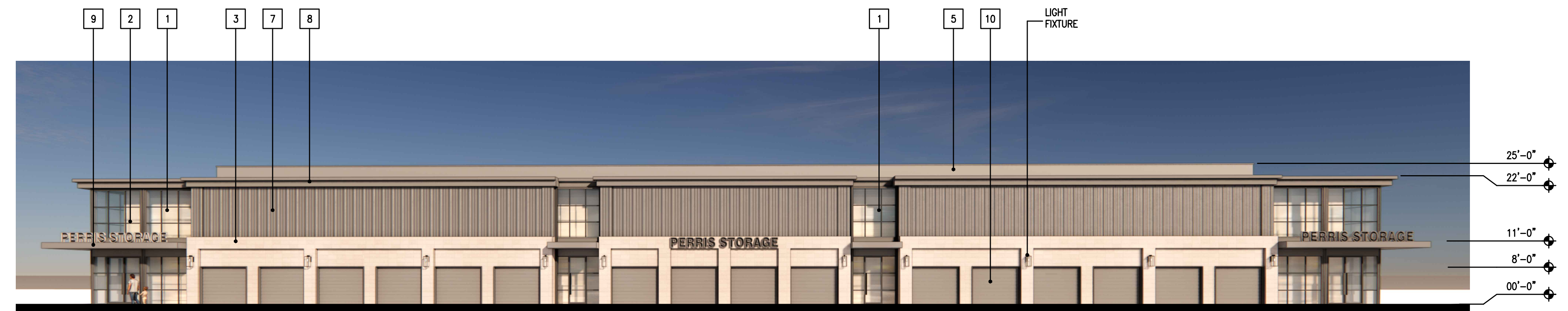
Typical Single Level Building -Side Elevation



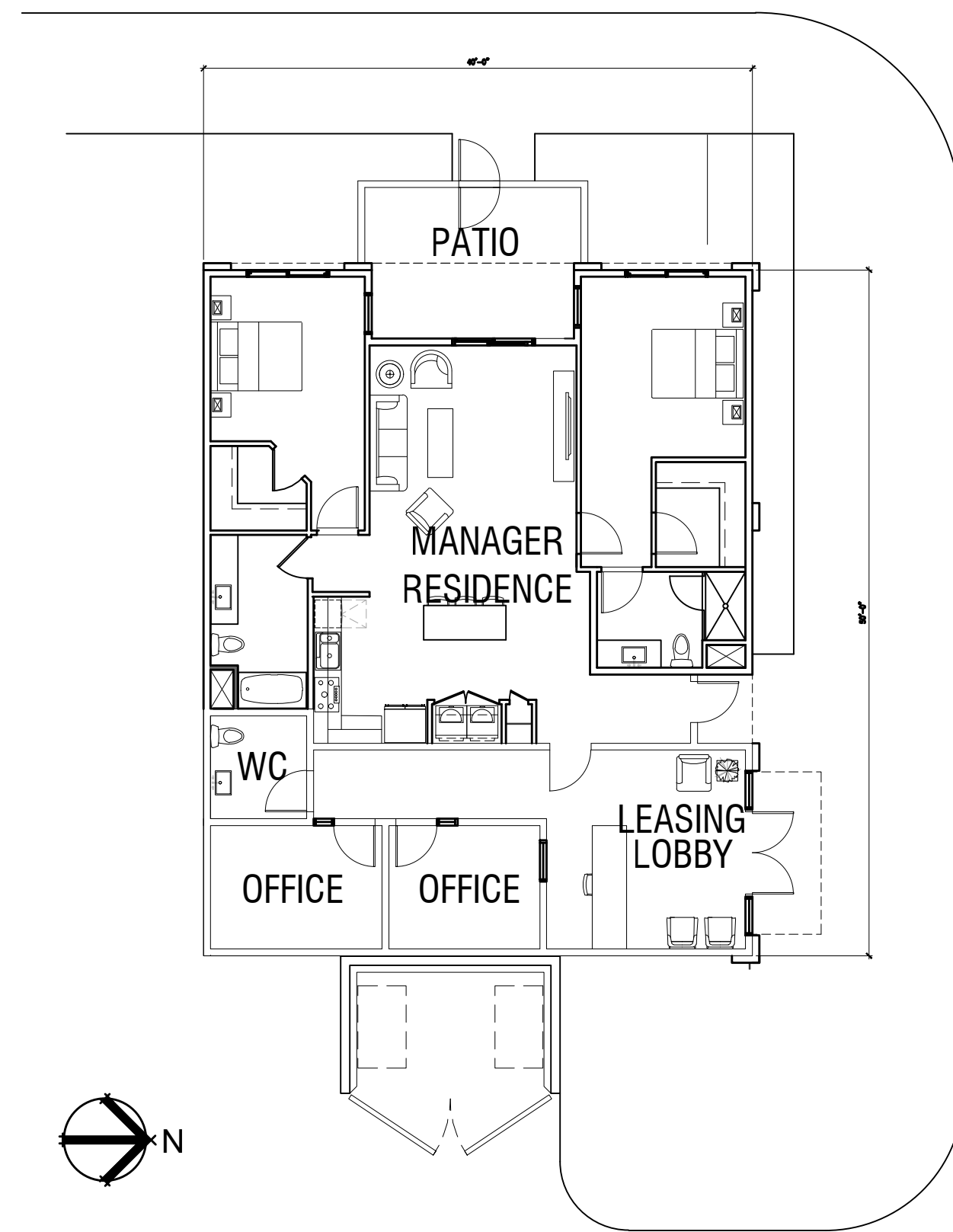
Typical Single Level Building - Front Elevation



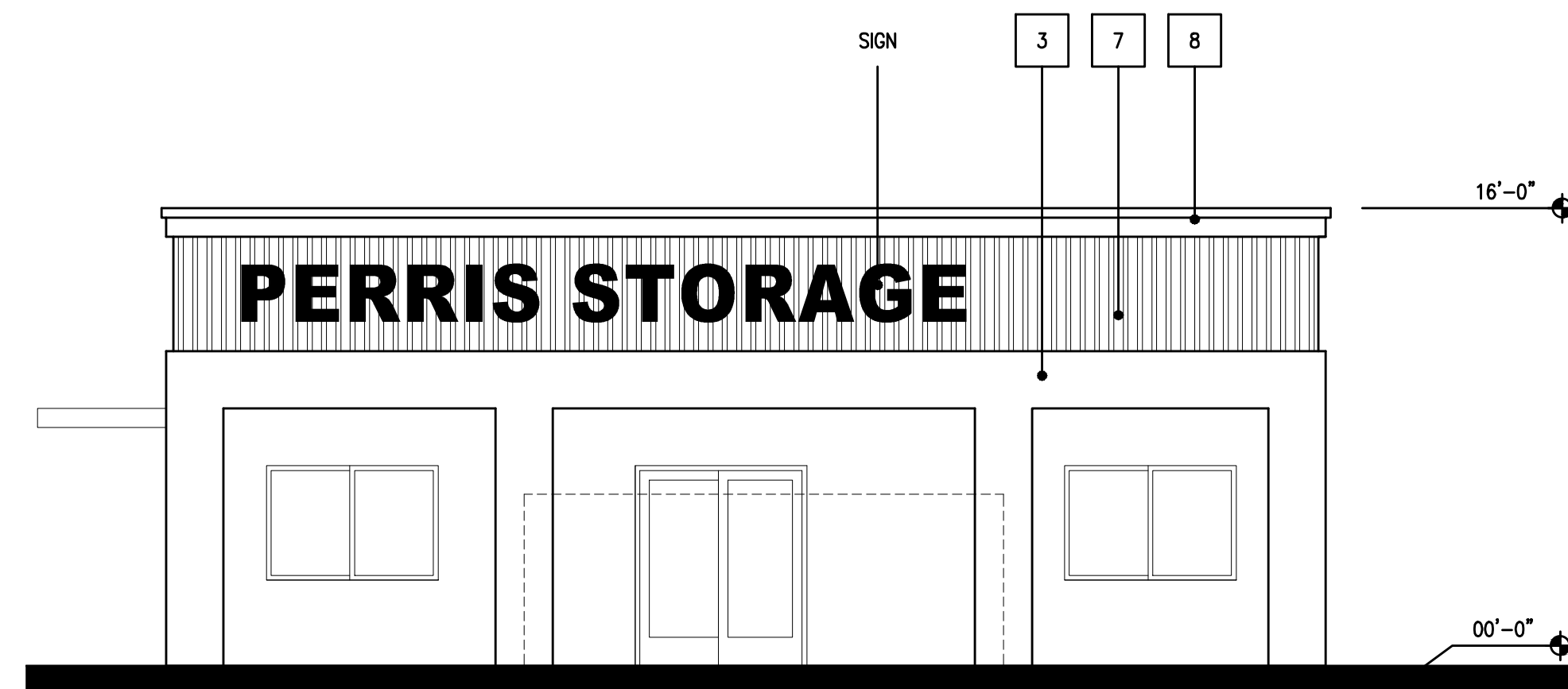
Typical Two Level Building - Side Elevation



Typical Two Level Building - Front and Back Elevation



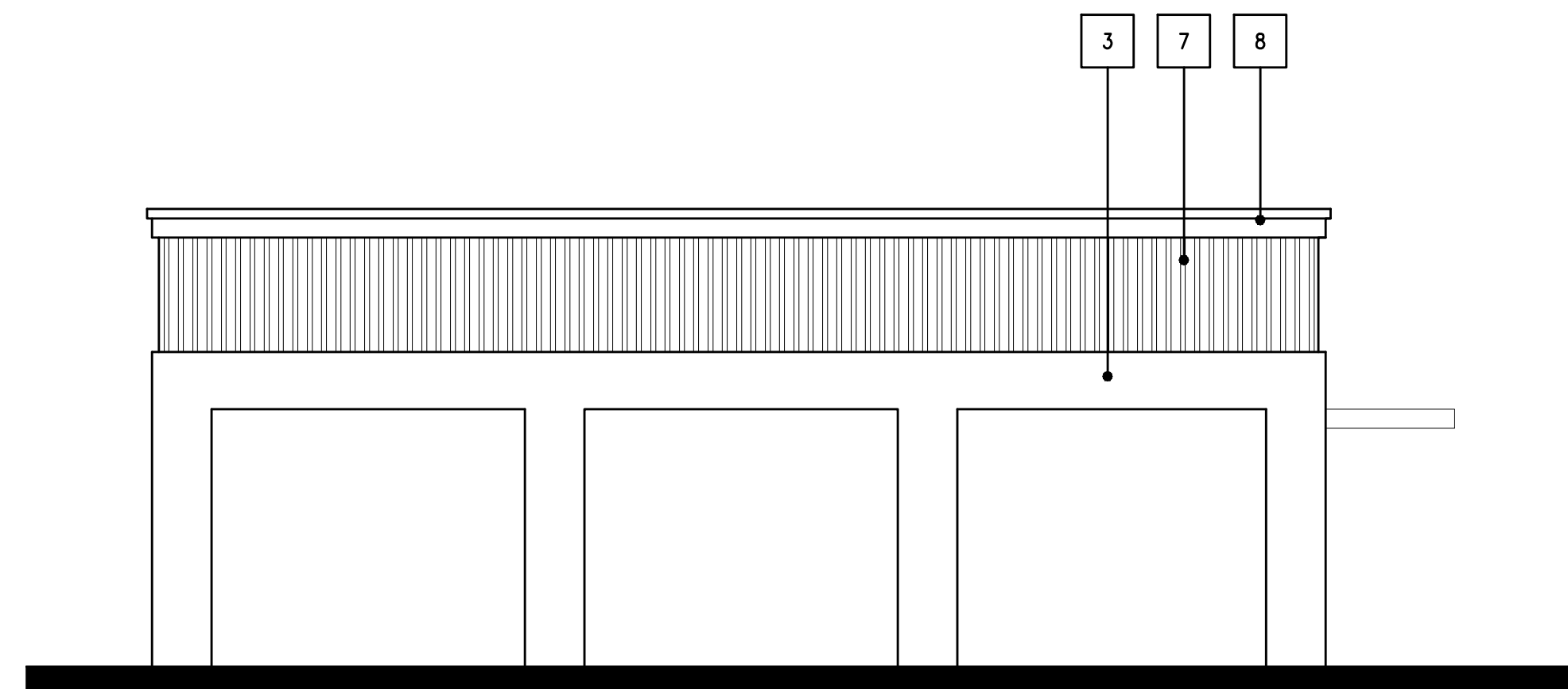
FLOOR PLAN



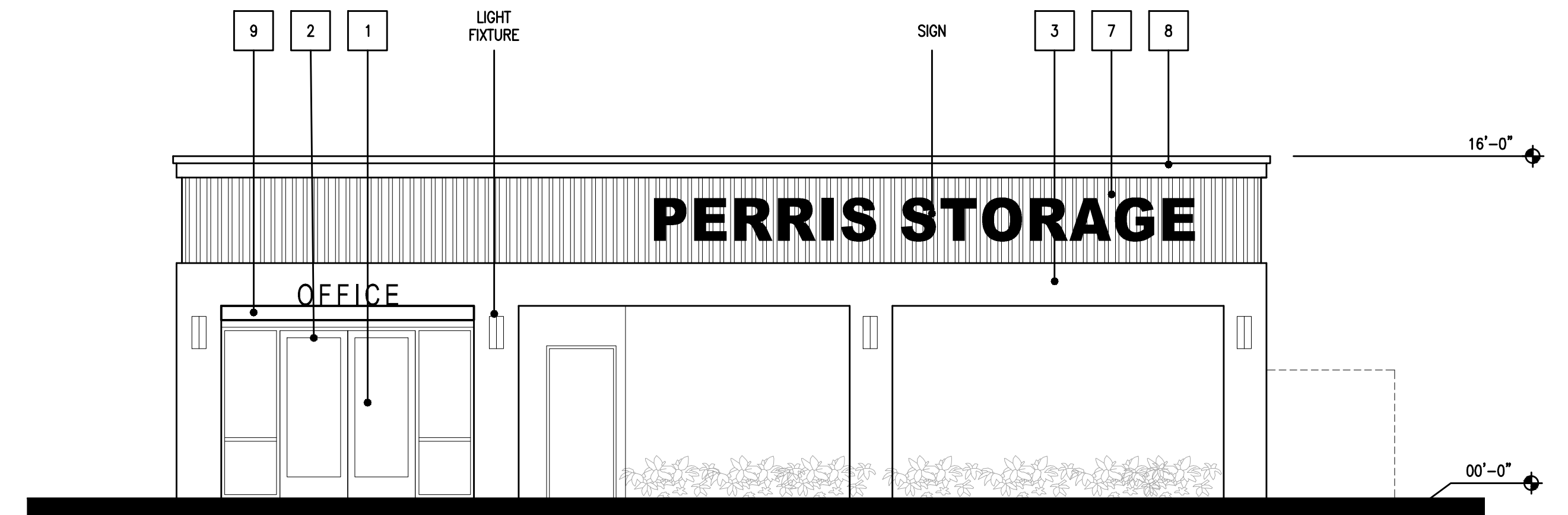
WEST ELEVATION



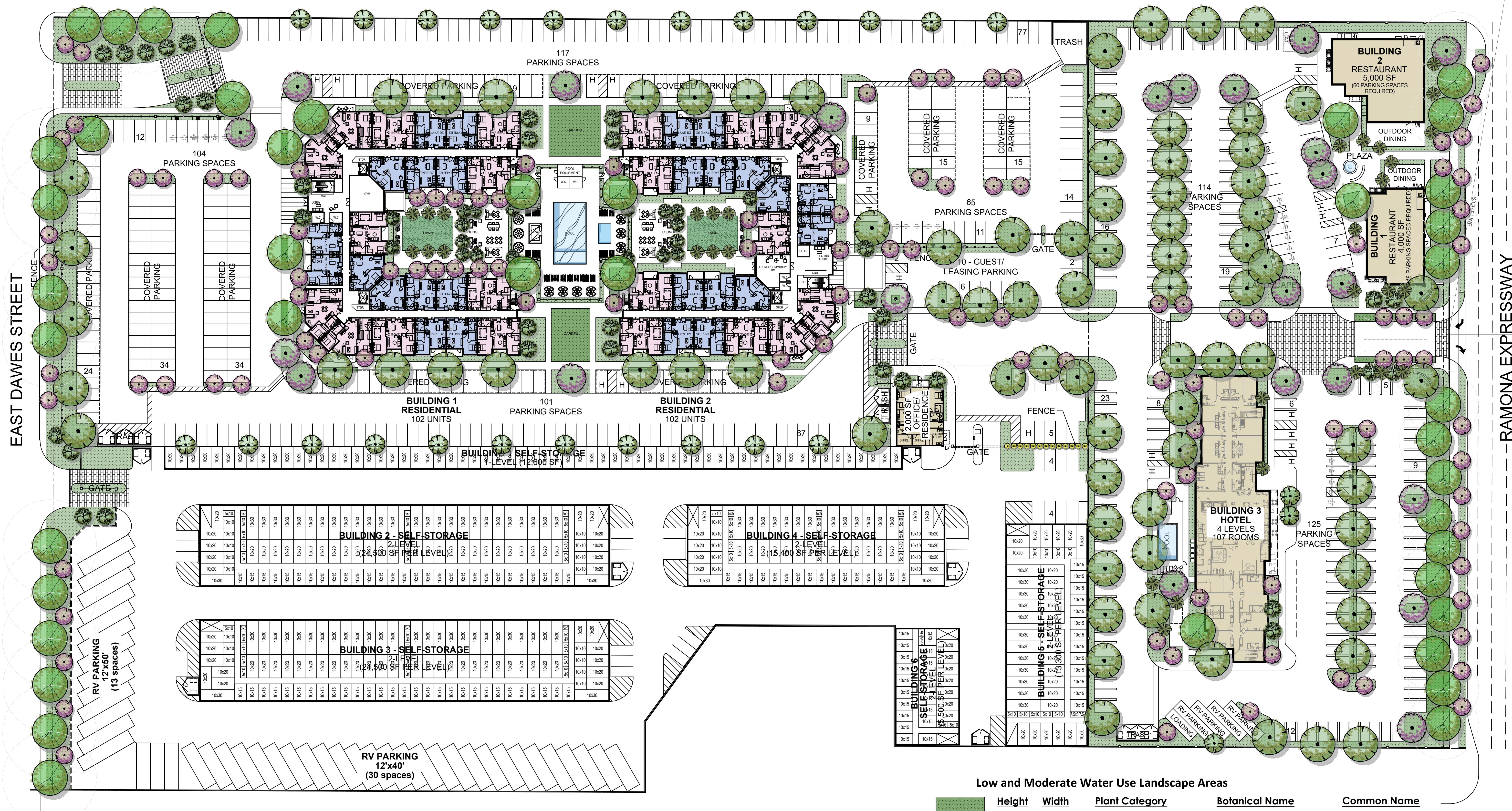
SOUTH ELEVATION



EAST ELEVATION



NORTH ELEVATION



Proposed Plant List

Selections from the Perris Valley Commerce Center Specific Plan

Large Evergreen Shade Trees

| Height | Width | Plant Category | Botanical Name | Common Name |
|----------|----------|----------------------------|----------------------|-------------------|
| 30-90 ft | 30-60 ft | Large Evergreen Shade Tree | Quercus chrysolepis | Canyon Live Oak |
| 60-70 ft | 40-70 ft | Large Evergreen Shade Tree | Quercus ilex | Holly Oak |
| 50 ft | 25-50 ft | Large Evergreen Shade Tree | Tipuana tipu | Tipu Tree |
| 20-35 ft | 30 ft | Large Evergreen Shade Tree | Rhus lancea | African Sumac |
| 60 ft | 50-70 ft | Large Evergreen Shade | Ulmus parvifolia | Evergreen Elm |
| 70 ft | 30-70 ft | Large Evergreen Shade Tree | Quercus agrifolia | Coast Live Oak |
| 70 ft | 80-75 ft | Large Evergreen Shade Tree | Quercus engelmannii | Mesa Oak |
| 80 ft | 60 ft | Large Evergreen Shade Tree | Magnolia grandiflora | Southern Magnolia |

Large Deciduous Shade Trees

| Height | Width | Plant Category | Botanical Name | Common Name |
|----------|----------|----------------------------|---------------------|---------------------|
| 80 ft | 20-50 ft | Large Deciduous Shade Tree | Platanus racemosa | California Sycamore |
| 45-50 ft | 35-40 ft | Large Deciduous Shade Tree | Platanus acerifolia | London Plane Tree |

Architectural Accent Trees

| Height | Width | Plant Category | Botanical Name | Common Name |
|----------|----------|-------------------------------------|------------------------------------|----------------------------|
| 25-30 ft | 30 ft | Medium Architectural Accent Tree | Olea europaea 'Swan Hill' | Fruitless Olive |
| 20-25 ft | 40 ft | Medium Architectural Flowering Tree | Parkinsonia hybrid 'Desert Museum' | Desert Museum Palo Verde |
| 35 ft | 35 ft | Medium Architectural Accent Tree | Prosopis hybrid 'Phoenix' | 'Phoenix' Mesquite |
| 10-15 ft | 10-15 ft | Citrus | Citrus | Variety |
| 25-30 ft | 3 ft | Vertical Accent Evergreen Tree | Cupressus sempervirens 'Monshel' | Tiny Tower Italian Cypress |
| 50 ft | 20-40 ft | Vertical Accent Palm Tree | Phoenix dactylifera | Date Palm |

Medium Evergreen Shade Trees

| Height | Width | Plant Category | Botanical Name | Common Name |
|----------|----------|------------------------------|-----------------------------------|---------------------|
| 40-50 ft | 25-40 ft | Medium Evergreen Tree | Arbutus 'Marina' | Marina Arbutus |
| 50 ft | 10-30 ft | Medium Evergreen Shade Tree | Tristania conferta | Brisbane Box Tree |
| 20-30 ft | 10-20 ft | Medium Evergreen Accent Tree | Laurus nobilis | Sweet Bay Tree |
| 20-30 ft | 10-15 ft | Small Evergreen Shade Tree | Magnolia grandiflora 'Little Gem' | Little Gem Magnolia |
| 15-25 ft | 40-60 ft | Medium Evergreen Shade Tree | Tristania conferta | Brisbane Box Tree |

Small Flowering Trees

| Height | Width | Plant Category | Botanical Name | Common Name |
|----------|----------|--------------------------------|----------------------------|-----------------------|
| 15-20 ft | 10-15 ft | Small Flowering Tree | Sophora secundiflora | Texas Mountain Laurel |
| 12-20 ft | 10-15 ft | Small Flowering Deciduous Tree | Cercis occidentalis | Western Redbud |
| 5-25 ft | 10-20 ft | Small Flowering Evergreen Tree | Chilopsis linearis | Desert Willow |
| 15-20 ft | 8-12 ft | Small Flowering Accent Tree | Melaleuca nesophila | Pink Melaleuca |
| 15-20 ft | 15-20 ft | Medium Flowering Accent Tree | Lagerstroemia indica | Crape Myrtle |
| 15-25 ft | 15-25 ft | Small Flowering Tree | Chilotaipa X tashkentensis | Chilotaipa |

Large Flowering Trees

| Height | Width | Plant Category | Botanical Name | Common Name |
|----------|----------|--------------------------------------|--------------------------------|------------------------------|
| 10-12 ft | 8-10 ft | Very Small Flowering Tree | Rhaphiolepis 'Majestic Beauty' | Majestic Beauty Rhaphiolepis |
| 35 ft | 20-30 ft | Large Flowering Evergreen Tree | Bauhinia variegata | Purple Orchid Tree |
| 20-40 ft | 15-30 ft | Large Flowering Evergreen Shade Tree | Koeleruteria bipinnata | Chinese Flame Tree |
| 20-35 ft | 20-35 ft | Large Flowering Evergreen Shade Tree | Koeleruteria paniculata | Golden Rain Tree |

Recreational Turf Areas

| Height | Width | Plant Category | Botanical Name | Common Name |
|-----------|----------|----------------|-------------------------------|----------------|
| Mow to 1" | Sod Lawn | Turfgrass | Cynodon dactylon 'Sanita Ana' | Tifway Bermuda |

Low and Moderate Water Use Landscape Areas

| Height | Width | Plant Category | Botanical Name | Common Name |
|--------|-------|------------------|---------------------------|------------------|
| 4-8' | 8-12' | Foundation Shrub | Arctostaphylos densiflora | Sonoma Manzanita |
| 3' | 3' | Foundation Shrub | Cistus spp | Rockrose |
| 12-16' | 8-12' | Foundation Shrub | Dodonaea viscosa | Hopsseed Bush |
| 1-2' | 1-1' | Foundation Shrub | Euonymus japonicus spp | Euonymus |
| 4-5' | 5-8' | Foundation Shrub | Grevillea 'Noeili' | Noel's Grevilla |

Large Flowering Low Water Use Shrubs

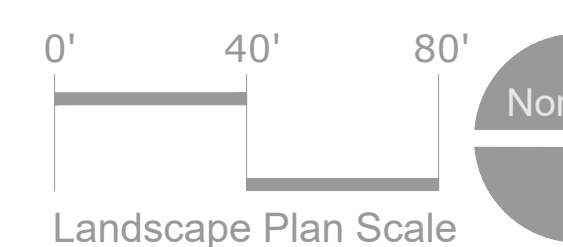
| Height | Width | Plant Category | Botanical Name | Common Name |
|--------|-------|------------------|--------------------------------|----------------------|
| 3' | 3' | Foundation Shrub | Leucophyllum candidum | Violet Silverleaf |
| 6-8' | 6-8' | Foundation Shrub | Leucophyllum frutescens | Texas Sage |
| 4' | 5' | Foundation Shrub | Leucophyllum laevigatum | Chihuahuan Rain Sage |
| 4-5' | 4-5' | Foundation Shrub | Leucophyllum langmaniae | Cinnamon Sage |
| 6' | 6' | Foundation Shrub | Leucophyllum pruinatum | Sierra Bouquet |
| 3' | 3' | Foundation Shrub | Leucophyllum zygophyllum | Blue Rain Sage |
| 4-6' | 4-6' | Foundation Shrub | Senna artemesioides | Feathery Senna |
| 4-6' | 4-6' | Foundation Shrub | Senna artemesioides filifolia | Desert Senna |
| 4-6' | 4-6' | Foundation Shrub | Senna artemesioides petiolaris | Silver Senna |
| 4-6' | 4-6' | Foundation Shrub | Senna wislizenii | Shrubby Senna |
| 8-10' | 8-10' | Foundation Shrub | Elaeagnus pungens | Silverberry |

Culinary Plant Material

| Height | Width | Plant Category | Botanical Name | Common Name |
|--------|-------|------------------------------|-------------------------|-------------|
| 4-5' | 2-3' | Culinary and Flowering Shrub | Rosemarinus officinalis | Rosemary |

Flowering Low Water Use Groundcovers

| Height | Width | Plant Category | Botanical Name | Common Name |
|--------|-------|-----------------------|--------------------------|----------------------|
| 1-2' | 2-3' | Flowering Groundcover | Convolvulus mauritanicus | Ground Morning Glory |
| 12-18" | 6' | Flowering Groundcover | Dalea greggii | Trailing Indigo Bush |



CONCEPTUAL LANDSCAPE PLAN

THE RETREAT
PERRIS CALIFORNIA



Myoporum parvifolium 'Pink'
Pink Myoporum



Myoporum parvifolium 'Prostrate'
Prostrate Myoporum



Lantana montevidensis
Trailing Lantana



Diets bicolor
Fortnight Lily



Muhlenbergia rigens
Deer Grass



Ligustrum j. texanum
Texas Privet



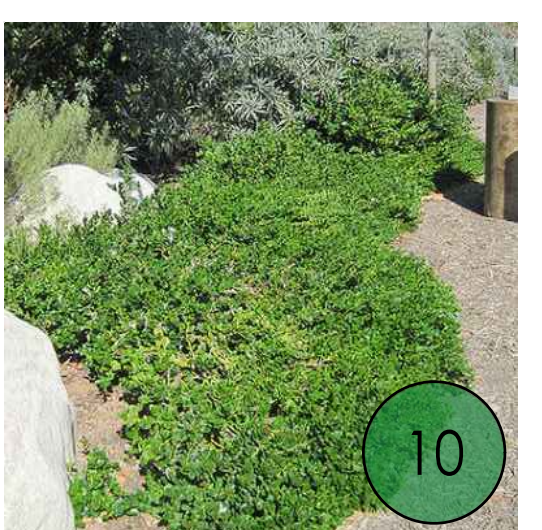
Buxus microphylla japonica
Japanese Boxwood



Portulacaria afra
Elephants Food



Myoporum 'Pacificum'
Pacific Myoporum



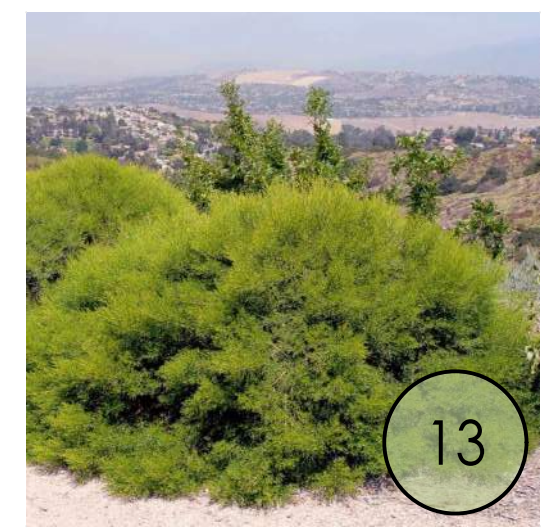
Carissa m. Green Carpet
Prostrate Natal Plum



Cotoneaster horizontalis
Rock Cotoneaster



Acacia redolens 'Prostrata'
Prostrate Acacia



Baccharis x 'Centennial'
Prostrate Desert Broom



Bougainvillea Species
Bougainvillea



Raphiolepis springtime
Indian Hawthorne



Raphiolepis l. Clara
Raphiolepis



Lantana camara
Bush Lantana



Alyogyne huegelii
Blue Hibiscus



Raphiolepis i. springtime
Indian Hawthorne



Agave americana
Century Plant



Agave colorata
Mescal Geniza



Agave geminiflora
Twin-flowered Agave



Agave murpheyi
Murphey's Agave



Agave pamyi
Parry's Agave



Agave victoria-reginae
Queen Victoria Agave



Agave weberi
Weber's Agave



Aloe arborescens
Tree Aloe



Aloe dawei
Dawe's Aloe



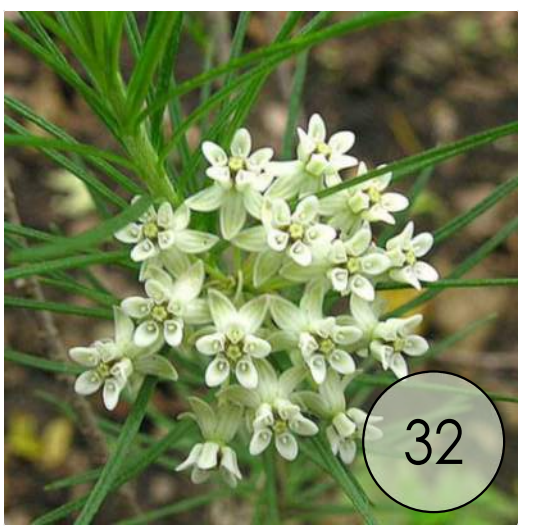
Aloe ferox
Cape aloe



Aloe variegata
Partridge Breast Aloe



Aloe vera
True Aloe



Asclepias linearis
Pine-Needle Milkweed



Asclepias subulata
Desert Milkweed



Bulbine frutescens
Bulbine



Cereus hildmannianus
Hildman's Cereus



Dasyliiron longissimum
Grass Tree



Dasyliiron species
Desert Spoon



Echinocactus grusonii
Golden Barrel Cactus



Echinocereus engelmannii
Engelmann Hedgehog



Euphorbia rigida
Gopher Plant



Ferocactus cylindraceus
Compass Barrel



Ferocactus wislizenii
Fish-Hook Barrel Cactus



Hesperaloe parviflora
Red Yucca



Nolina microcarpa
Bear Grass



Pachycereus marginatus
Mexican Fencepost



Pachypodium lamerei
Madagascar Palm



Pedilanthus macrocarpus
Slipper Flower



Yucca aloifolia
Spanish Bayonet



Yucca baccata
Banana Yucca



Yucca elata
Soaptree Yucca



Yucca gloriosa
Spanish Dagger



Yucca pallida
Pale-Leaf Yucca



Yucca recurvifolia
Pendulous Yucca



Yucca rigida
Blue Yucca



Yucca whipplei
Our Lord's Candle



Campsis radicans
Trumpet Vine



Ficus pumila repens
Creeping Fig



Gelsimium sempervirens
Carolina Jessamine



Hardenbergia violacea
Lilac Vine



Parthenocissus tricuspidata
Boston Ivy



Vitis californica
California Wild Grape



Lonicera j. halliana
Hall's Honeysuckle



Stenocereus thurberi
Organ Pipe Cactus



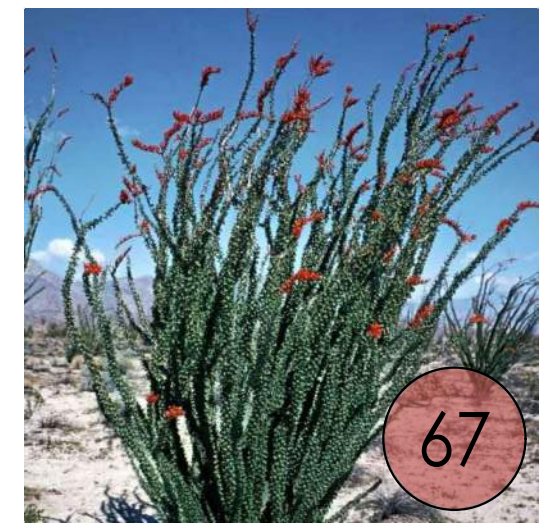
Opuntia basilaris
Beavertail Prickly Pear



Opuntia engelmannii
Englemann's Prickly Pear



Opuntia ficus-indica
Indian Fig



Fouquieria splendens
Ocotillo



Salvia clevelandii
Chaparral Sage



Salvia greggii
Autumn Sage



Salvia leucantha
Mexican Brush Sage



Salvia apiana
White Sage



Pittosporum crassifolium
Dwarf Pittosporum



Pittosporum tobira 'Wheeler's Dwarf'
Wheeler's Dwarf Pittosporum



Ligustrum japonicum texanum
Texas Privet

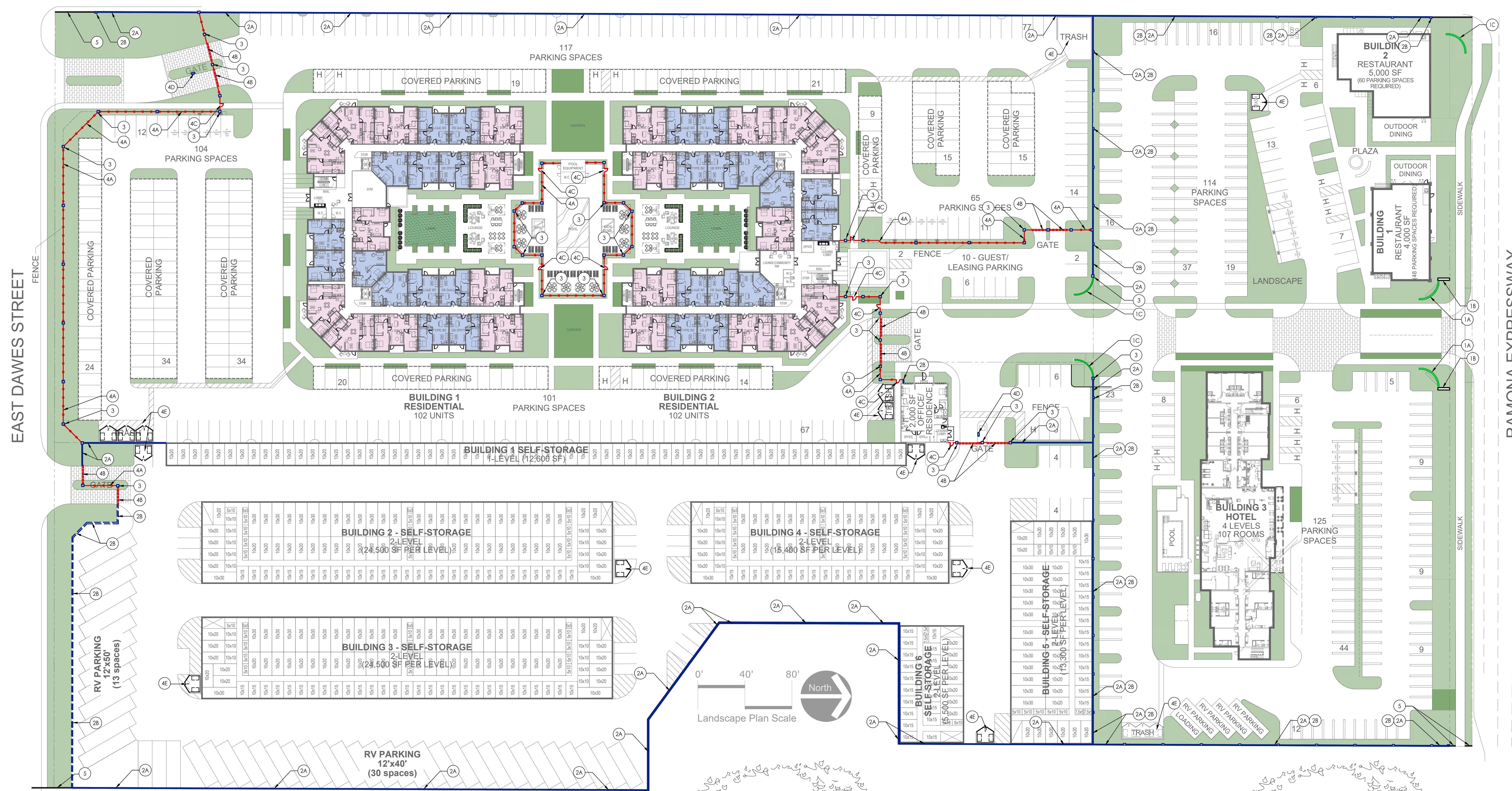


Pittosporum tobira variegata
Mock Orange

PROPOSED LANDSCAPE PLANT PALETTE

PROPOSED LANDSCAPE PLANT PALETTE

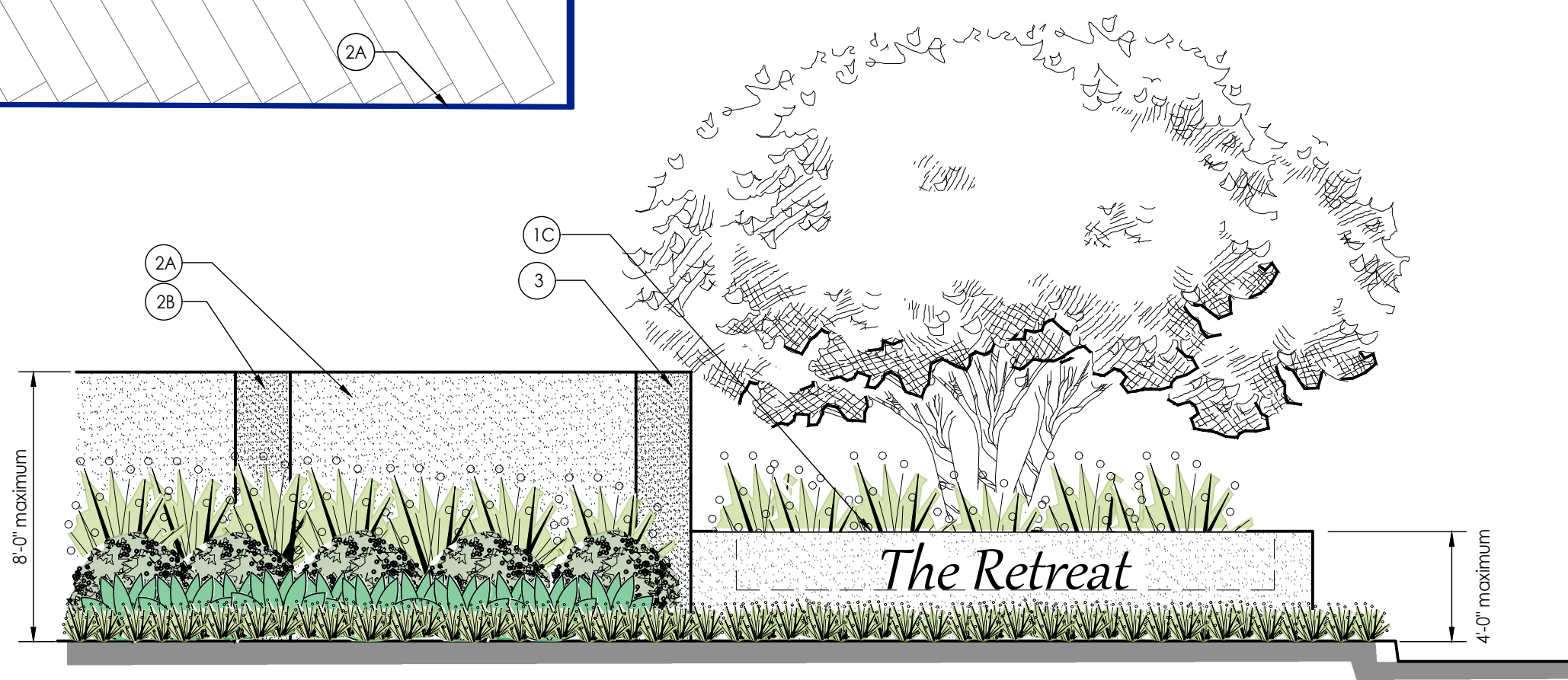
Plant selections from the Perris Valley Commerce Center Specific Plan



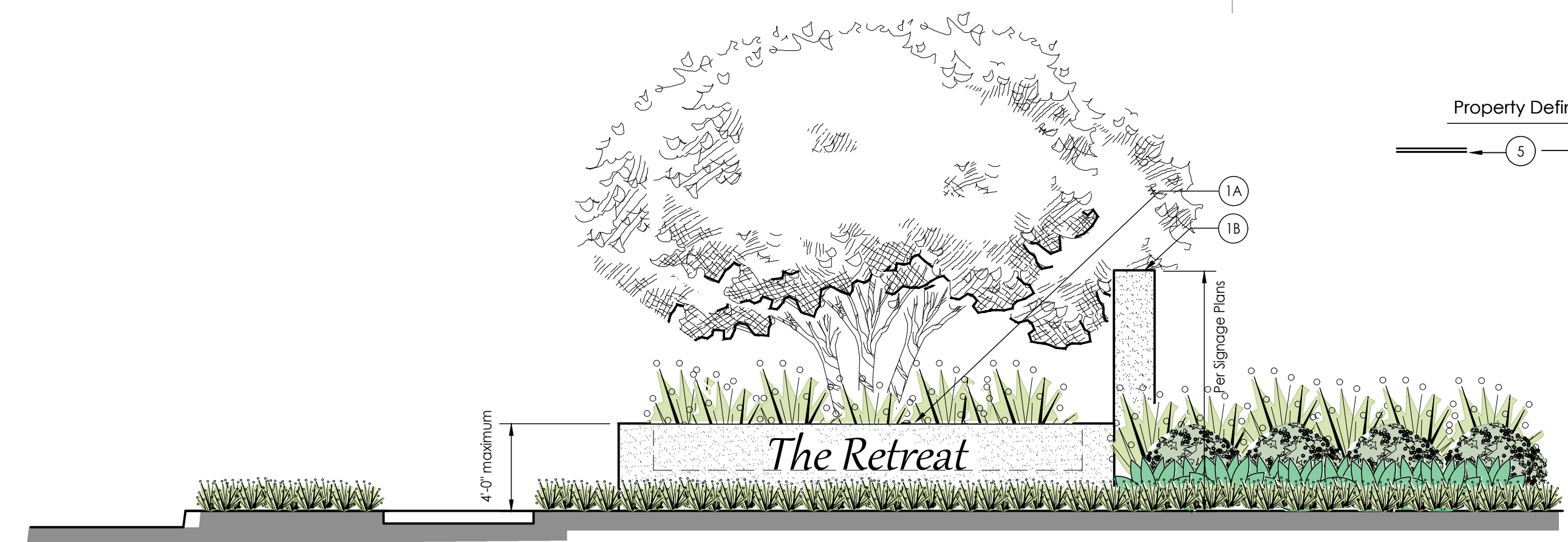
- ### Fence and Wall Elements
- Entry Monument Wall with Plaster at Perimeter Wall
- | Description: | Height |
|---------------------------------------|--------------------------|
| 1A Primary Entry Monument Walls | 4 ft |
| 1B Commercial Space Business Signage | Per Code / Specific Plan |
| 1C Secondary Entry and Monument Walls | 4 ft |
- Project Perimeter Walls and Plasters
- | | |
|---------------------------|-----------|
| 2A Perimeter Wall | 8 ft max. |
| 2B Perimeter Wall Plaster | 8 ft max. |
- Secondary Entry Monument Wall with Plaster at Perimeter Wall
- | Description: | Height |
|---------------------------------|------------|
| 3C Primary Entry Monument Walls | 4 ft |
| 3 Perimeter Wall Plaster | 8 ft max. |
| 2A Perimeter Wall | 8 ft max. |
| 2B Screen Wall | 14 ft max. |
- Fences, Gates, and Pilasters
- | | |
|------------------------------------|-----------|
| 3 Perimeter Wall Plaster | 8 ft max. |
| 4A Tubular Steel Fencing | 8 ft max. |
| 4C Tubular Steel Gate | 8 ft max. |
| 4B Tubular Steel Vehicular Gate | 8 ft max. |
| 10 Access Control / Intercom Panel | |
| 5E Trash Enclosure | |
- Property Defining Landscape Curb
- | | |
|---------------------------|---|
| 5 Concrete Landscape Curb | 8" wide, 6" depth concrete curb at property line. |
|---------------------------|---|



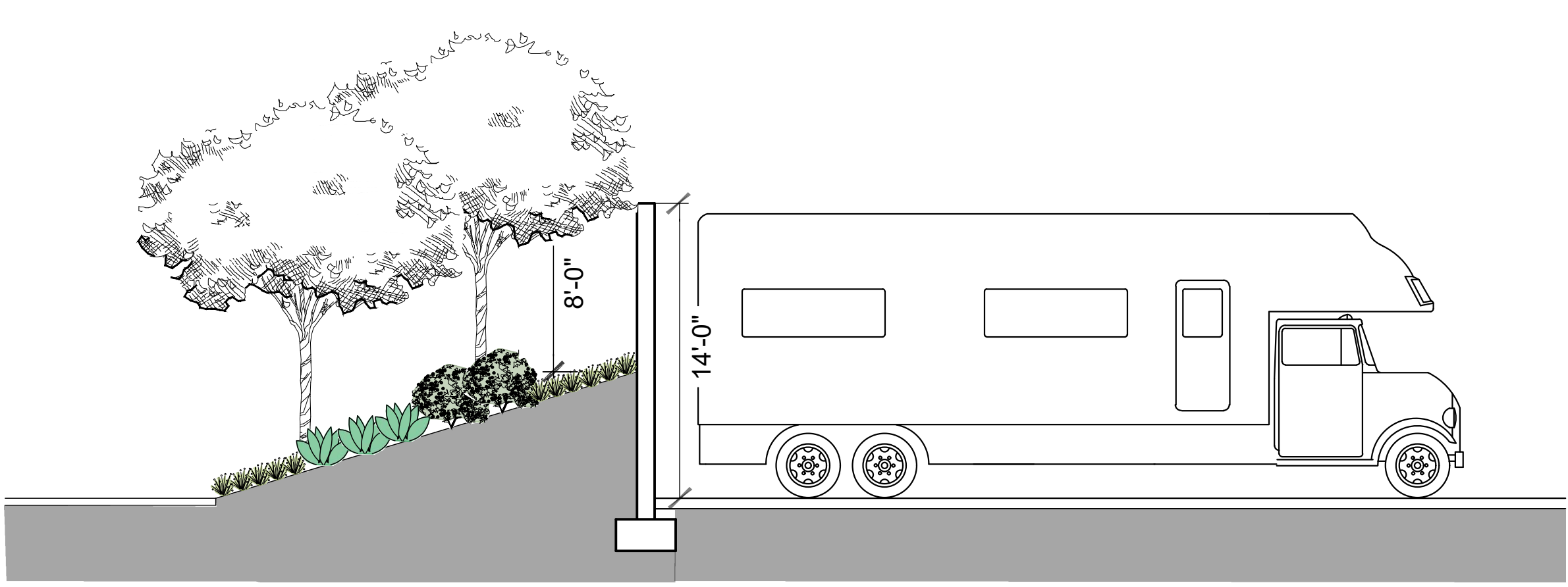
Trash enclosure with overhead trellis treatment



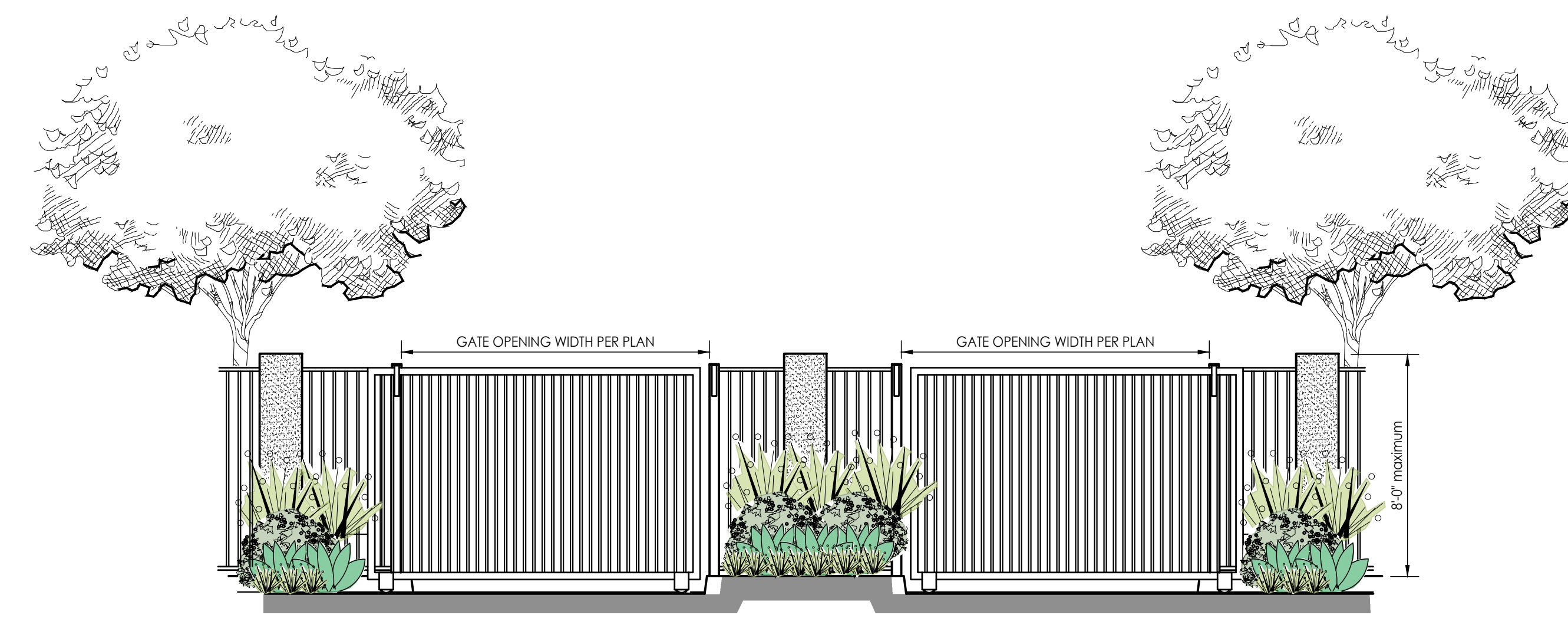
Secondary Entry Monument and Perimeter Wall Connection
Scale 1"=4'-0"



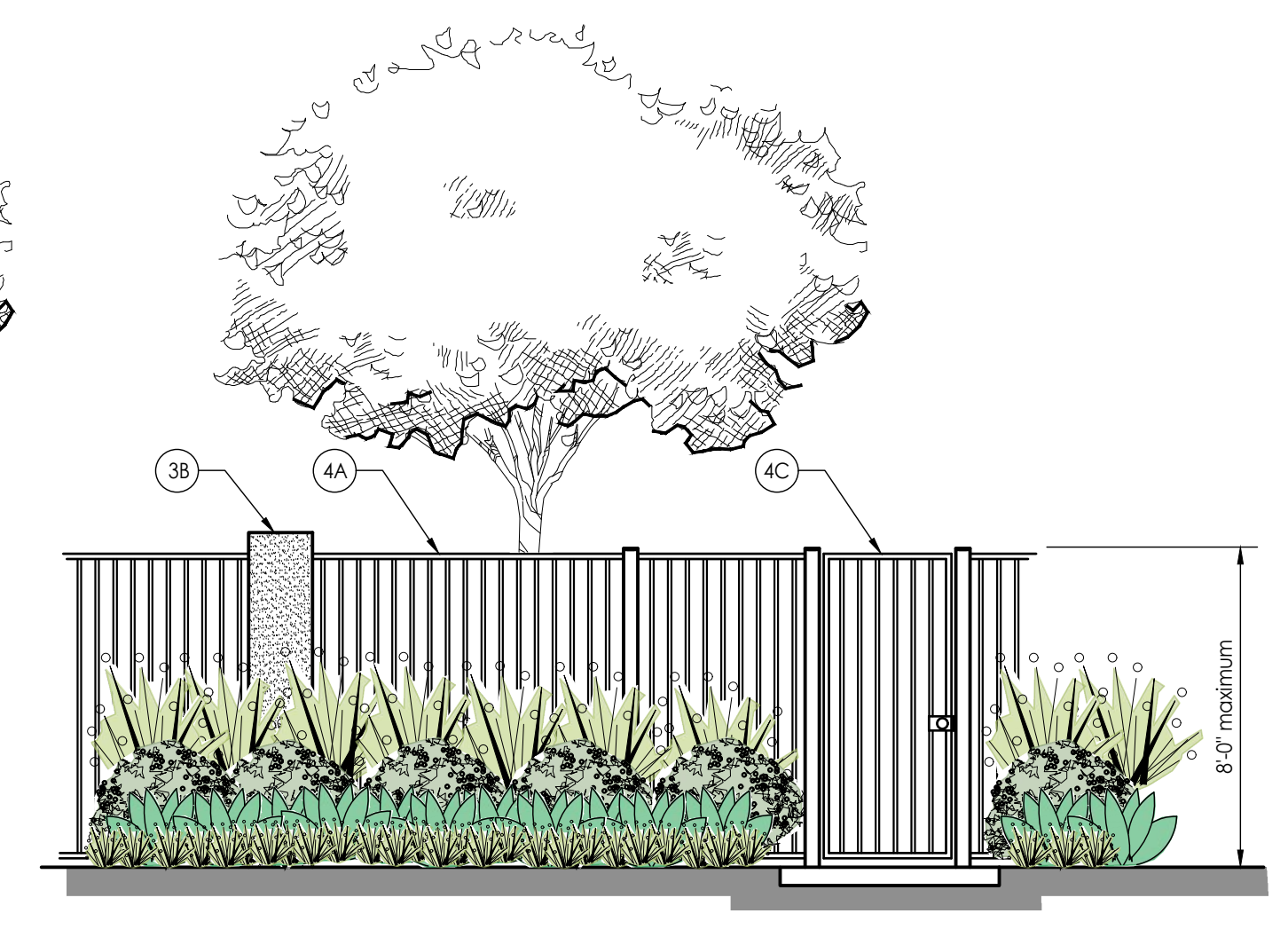
Primary Entry Monument at Ramona Expressway
Scale 1"=4'-0"



14ft H Screen Wall
Scale 1"=6'-0"



Tubular Steel Vehicular Gates - at Apartment Entry
Scale 1"=4'-0"



Tubular Steel Fence and Pedestrian Gate - Typical
Scale 1"=4'-0"

PRELIMINARY FENCE AND WALL PLAN

THE RETREAT: PERRIS, CA

PRELIMINARY WATER USE CALCULATIONS: APARTMENTS

Reference Eto **56.7** **Conservation Factor** **0.55**
Maximum Allowable Water Allocation Equation: (residential)
 MAWA = (Eto) (0.62) [(ETAF x LA) + ((1-ETAF)xSLA)]

| | | | | | | | |
|------------|-------------|-------------|-----------|---------------|------------|----------------|-------------|
| Eto | 0.62 | ETAF | LA | 1-ETAF | SLA | | |
| 56.7 | 0.62 | 0.55 | 49592 | 0.45 | 2428 | 997,256 | MAWA |

Estimated Total Water Use Equation:
 ETWU = Eto x 0.62 x ETAF x LA **657,442** ETWU

HYDROZONE MATRIX

| ZONE | HYDROZONE BASIS | S.F. | %TOTAL | PLANT TYPE | PLANT FACTOR | IRRIGATION EFFICIENCY | Eto | 0.62 | ETAF | LA | ETWU | IRRIGATION METHOD |
|--------------------|-----------------|-------|--------|--------------|--------------|-----------------------|-------|------|------|-------|----------------|-------------------|
| LW-SHRUBS | | 28298 | 57% | LOW | 0.20 | 0.81 | 56.70 | 0.62 | 0.25 | 28298 | 245,630.11 | Dripline |
| LW/MW-TREES/SHRUBS | | 18866 | 38% | LOW/MODERATE | 0.50 | 0.81 | 56.70 | 0.62 | 0.62 | 18866 | 409,383.52 | Dripline |
| SLA-REC. TURF | | 2428 | 12% | SLA | | | | | 1.00 | 2428 | 2,428.00 | Dripline |
| ETWU | | | | | | | | | | | 657,442 | |
| Total Landscape | | | | | | | | | | | 49,592 | |

Note: Landscape to be installed with low-volume drip irrigation and automatic, weather sensing irrigation controller.

PRELIMINARY WATER USE CALCULATIONS: COMMERCIAL AND STORAGE AREA

Reference Eto **56.7** **Conservation Factor** **0.45**
Maximum Allowable Water Allocation Equation: (non-residential)
 MAWA = (Eto) (0.62) [(ETAF x LA) + ((1-ETAF)xSLA)]

| | | | | | | | |
|------------|-------------|-------------|-----------|---------------|------------|----------------|-------------|
| Eto | 0.62 | ETAF | LA | 1-ETAF | SLA | | |
| 56.7 | 0.62 | 0.45 | 56328 | 0.55 | 0 | 891,070 | MAWA |

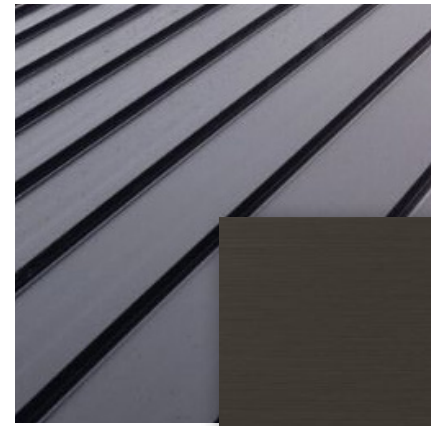
Estimated Total Water Use Equation:
 ETWU = Eto x 0.62 x ETAF x LA **782,283** ETWU

HYDROZONE MATRIX

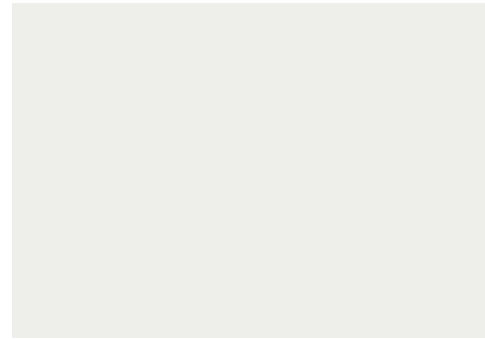
| ZONE | HYDROZONE BASIS | S.F. | %TOTAL | PLANT TYPE | PLANT FACTOR | IRRIGATION EFFICIENCY | Eto | 0.62 | ETAF | LA | ETWU | IRRIGATION METHOD |
|--------------------|-----------------|-------|--------|--------------|--------------|-----------------------|-------|------|------|-------|----------------|-------------------|
| LW-SHRUBS | | 33797 | 68% | LOW | 0.20 | 0.81 | 56.70 | 0.62 | 0.25 | 33797 | 293,356.22 | Dripline |
| LW/MW-TREES/SHRUBS | | 22531 | 45% | LOW/MODERATE | 0.50 | 0.81 | 56.70 | 0.62 | 0.62 | 22531 | 488,927.04 | Dripline |
| ETWU | | | | | | | | | | | 782,283 | |
| Total Landscape | | | | | | | | | | | 56,328 | |

Note: Landscape to be installed with low-volume drip irrigation and automatic, weather sensing irrigation controller.

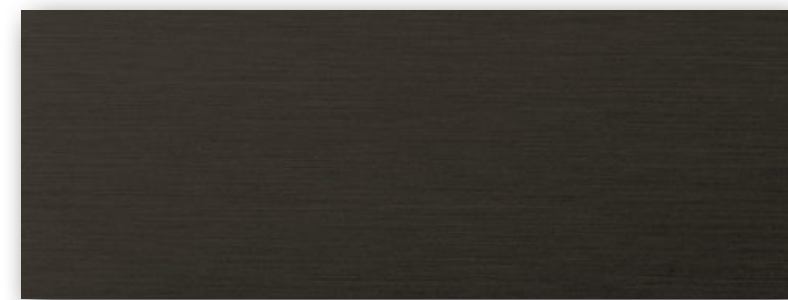
PAD BUILDINGS



1 METAL ROOF
WESTERN STATES
CHARCOAL GRAY



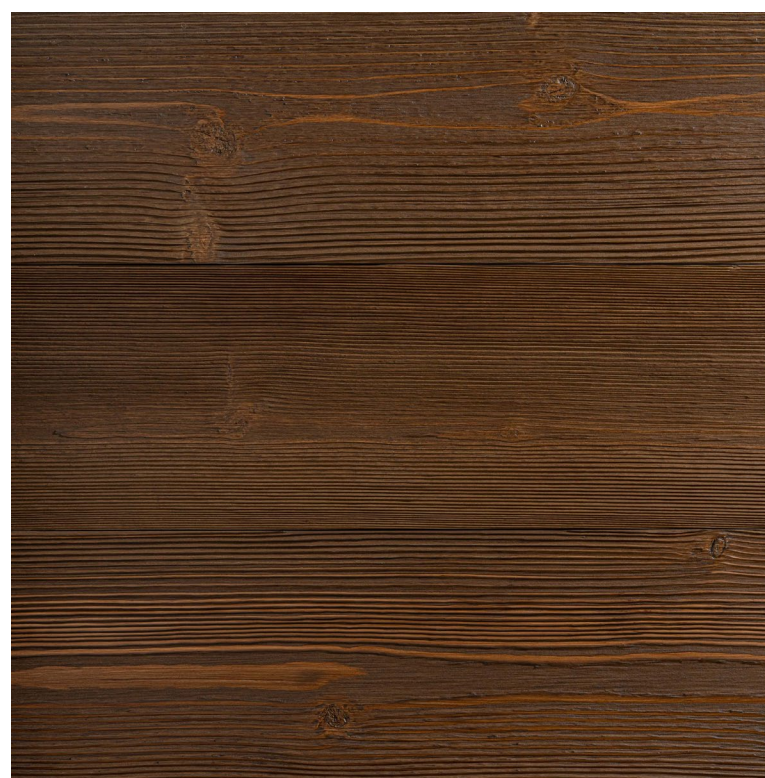
2 SHERWIN WILLIAMS
SW 7006
EXTRA WHITE



8 STOREFRONT
ANODIZED ALUMINUM
DARK BRONZE



9 METAL AWNING



5 WOOD



7 ELDORADO STONE
CLIFFSTONE
WHITEBARK

HOTEL



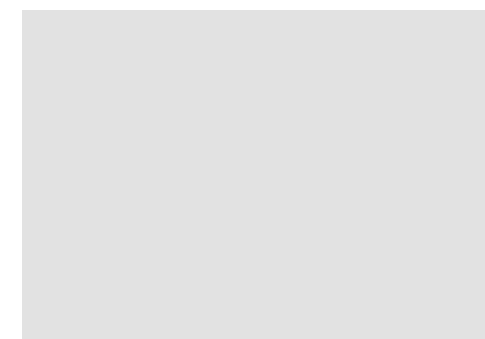
B2 PAINT
SHERWIN WILLIAMS
SW 7669
SUMMIT GRAY



ECO2 PAINT
SHERWIN WILLIAMS
SW 7019
GAUNTLET GRAY



EC03 PAINT
SHERWIN WILLIAMS
SW 6864
CHERRY TOMATO



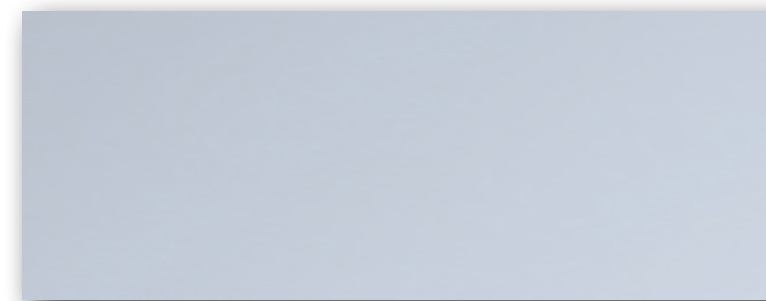
B1 PAINT
SHERWIN WILLIAMS
SW 6252
ICE CUBE



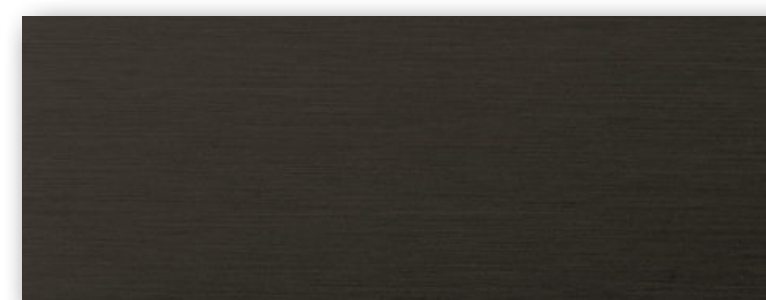
B3 PAINT
SHERWIN WILLIAMS
SW 6251
OUTERSPACE



EC04 PAINT
SHERWIN WILLIAMS
SW 9045
BORA BORA SHORE



W1 STOREFRONT
ANODIZED ALUMINUM OR POWDER COATED FINISH
TO MATCH
CLEAR

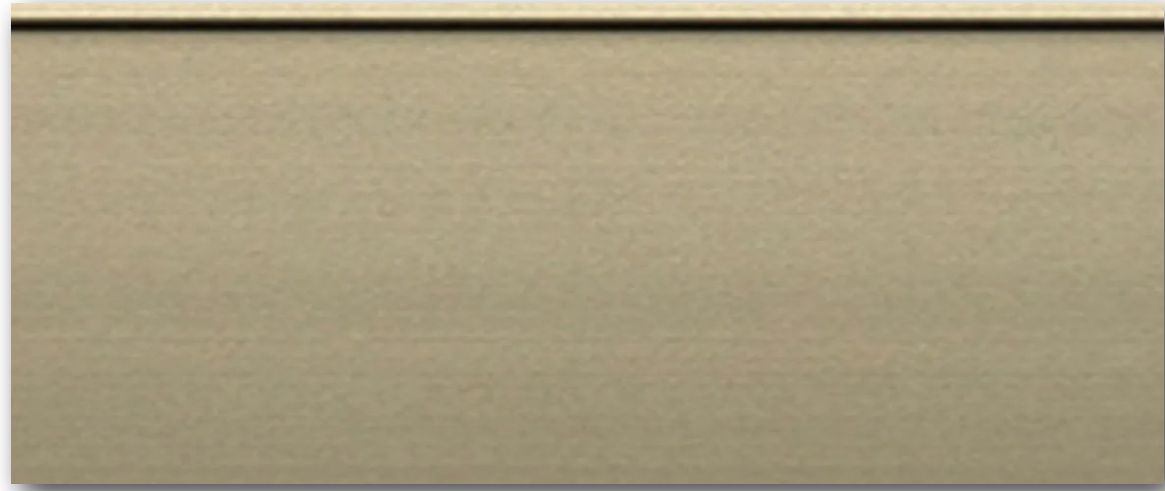


W2 STOREFRONT
ANODIZED ALUMINUM OR POWDER COATED FINISH
TO MATCH
DARK BRONZE

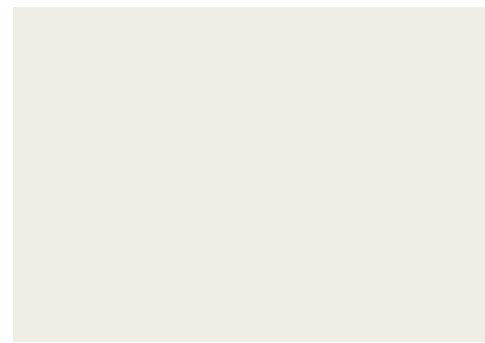
RESIDENTIAL



SELF-STORAGE



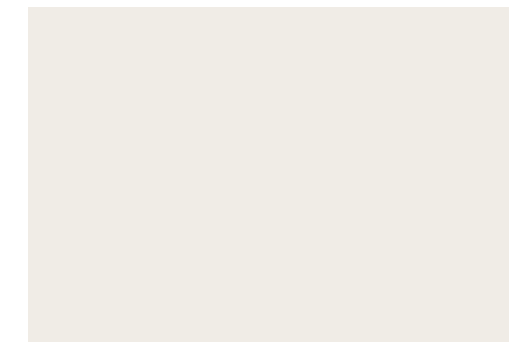
2 STOREFRONT ANODIZED ALUINUM



2 SHERWIN WILLIAMS SW 7005 PURE WHITE



2 STOREFRONT ANODIZED ALUINUM



2 SHERWIN WILLIAMS SW 7005 PURE WHITE



9 METAL AWNING

12 TILE/STONE VENEER



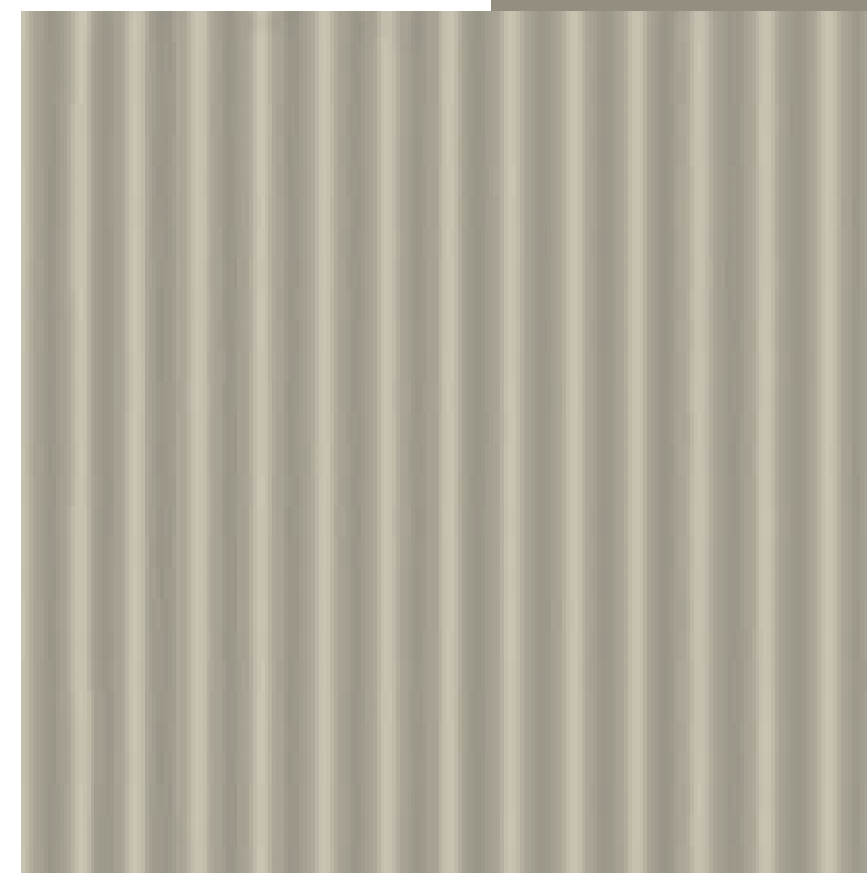
8 SOFFIT



4 THIN BRICK



9 METAL AWNING



7 CORRUGATED METAL



3 PRECISION BLOCK









