

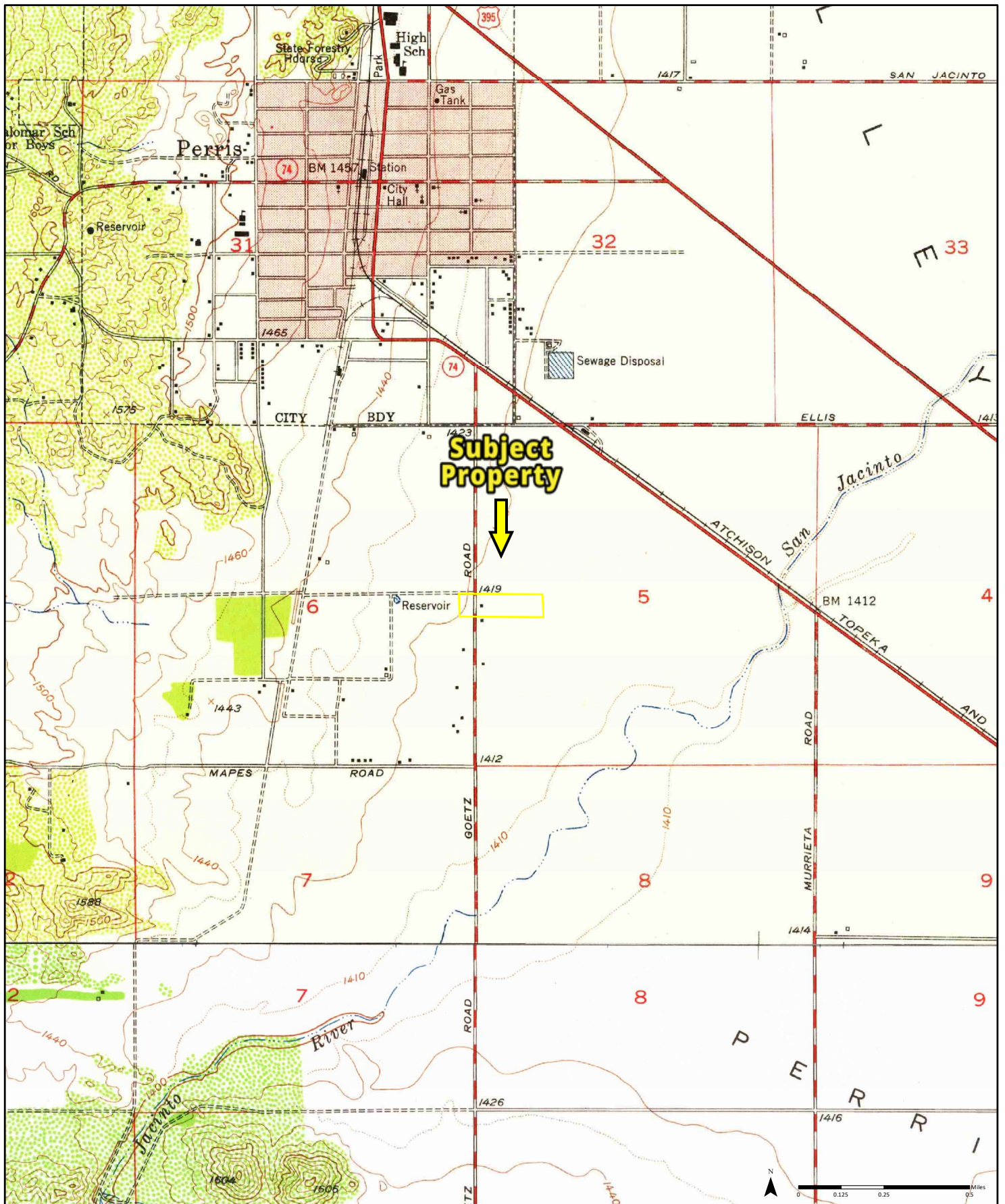
1943 ⁽¹⁾ Aerial Photo Year: 1939 ⁽²⁾ Aerial Photo Year: 1939

Quadrangle(s): Perris, CA₍₁₎; Murrieta, CA₍₂₎

Order No. 22042000909

Source: USGS 15 Minute Topographic Map

PARTNER



1953

⁽¹⁾ Aerial Photo Year: 1951

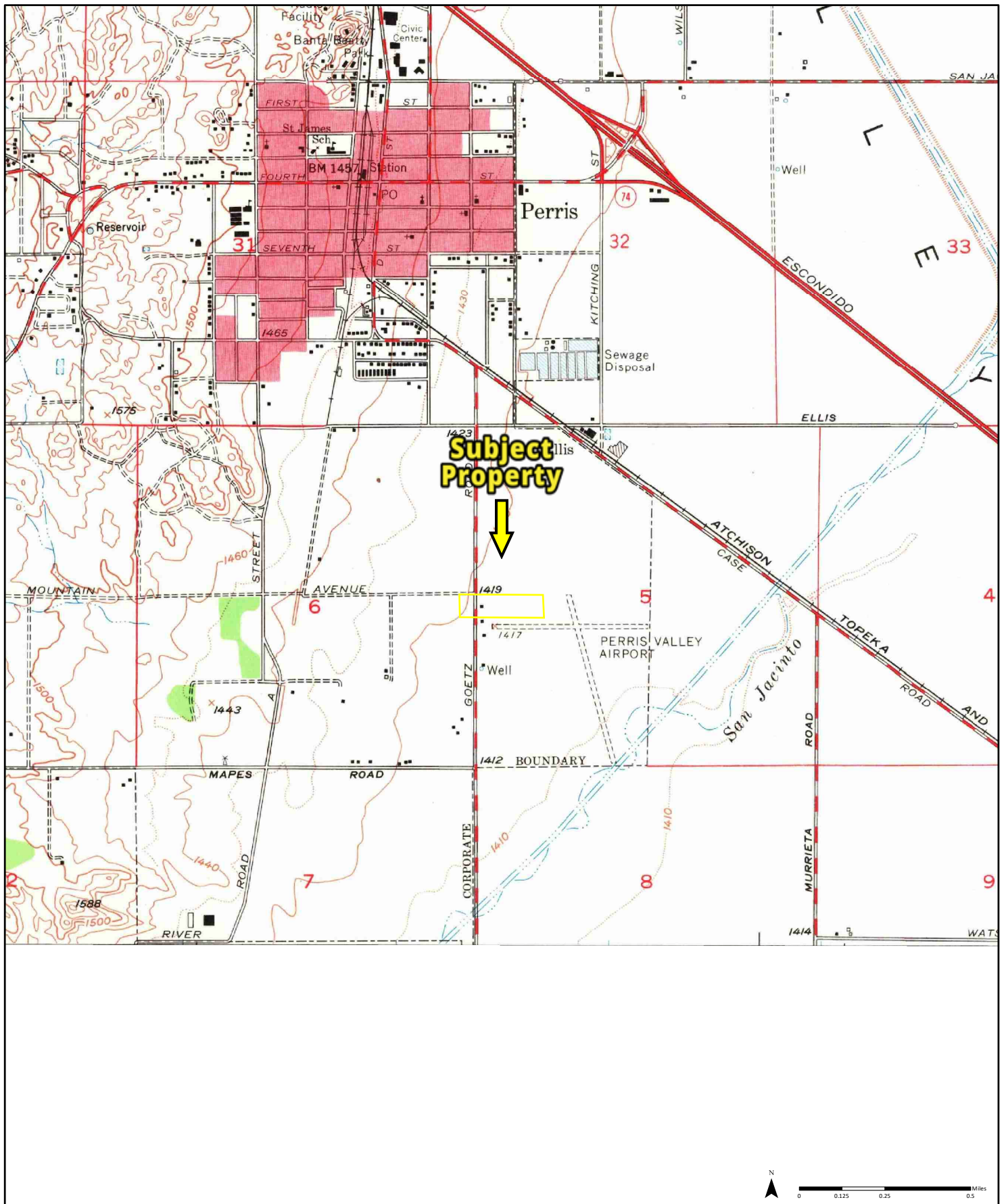
⁽²⁾ Aerial Photo Year: 1951

Quadrangle(s): Perris, CA⁽¹⁾; Romoland, CA⁽²⁾

Order No. 22042000909

Source: USGS 7.5 Minute Topographic Map

PARTNER



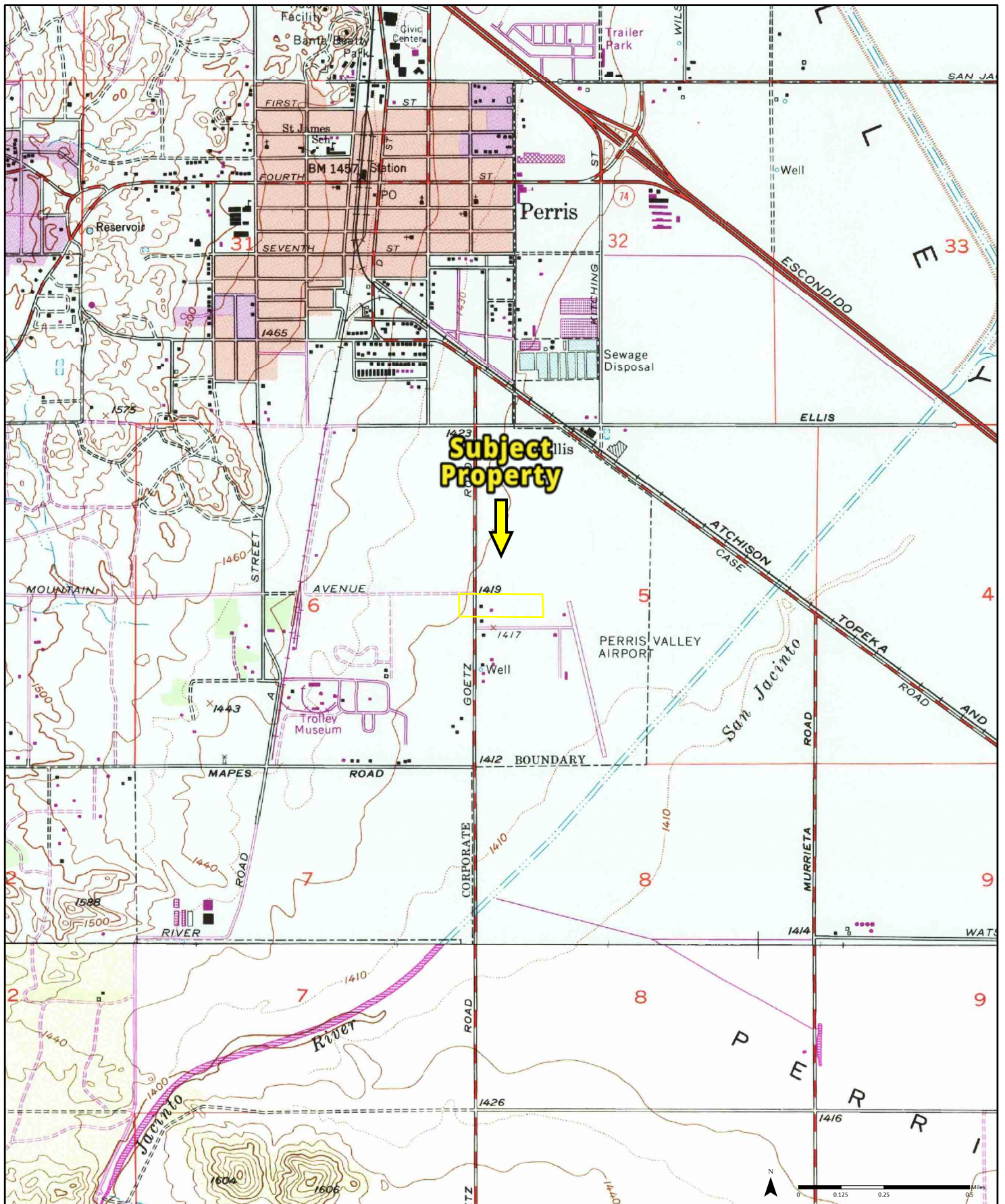
1967 ⁽¹⁾ Aerial Photo Year: 1966

Quadrangle(s): Perris, CA₍₁₎

Order No. 22042000909

Source: USGS 7.5 Minute Topographic Map

PARTNER



1979

(1) Aerial Photo Year: 1978
Photo Revision Year: 1979

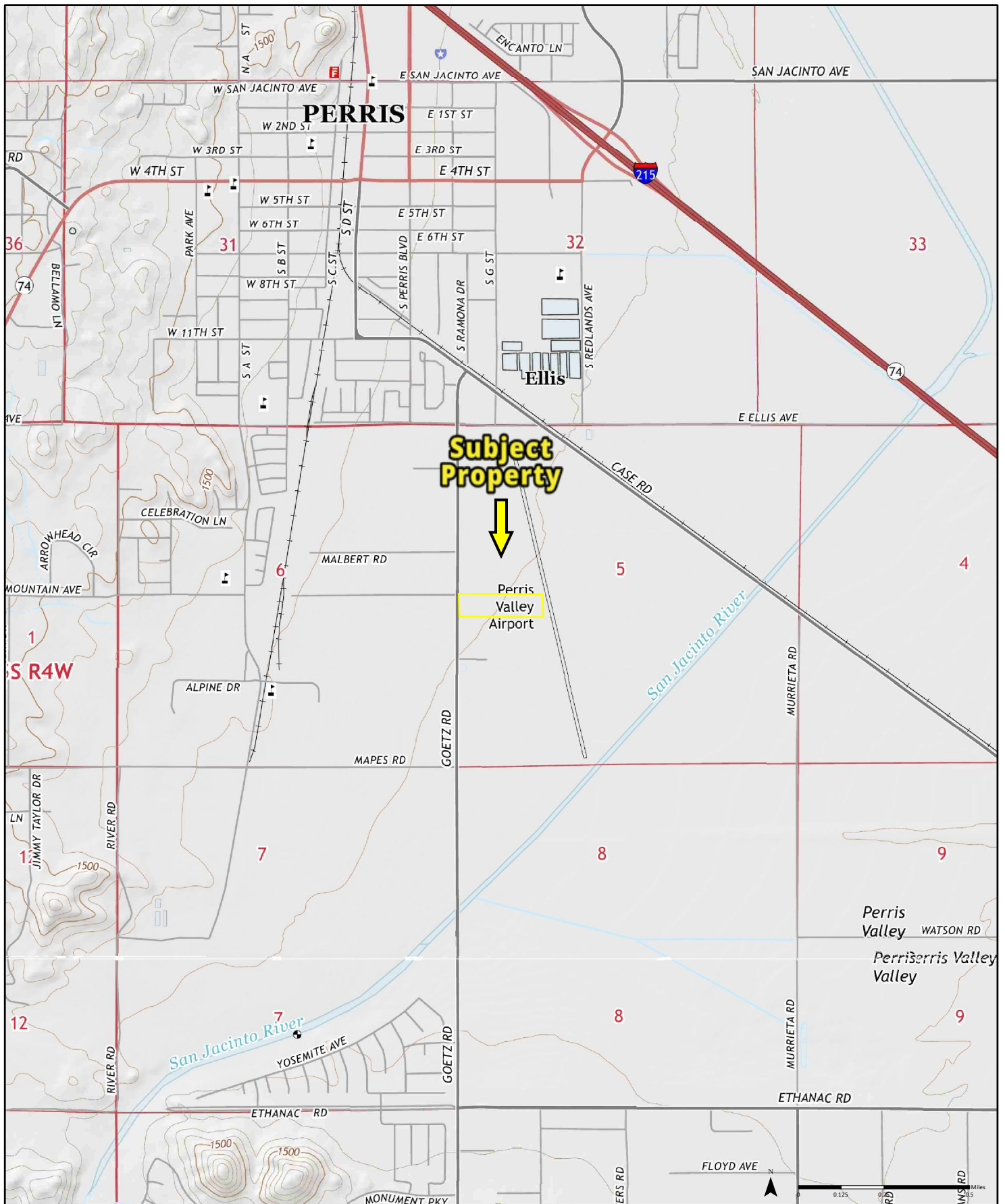
(2) Aerial Photo Year: 1976
Photo Revision Year: 1979

Quadrangle(s): Perris, CA(1); Romoland, CA(2)

Order No. 22042000909

Source: USGS 7.5 Minute Topographic Map

PARTNER



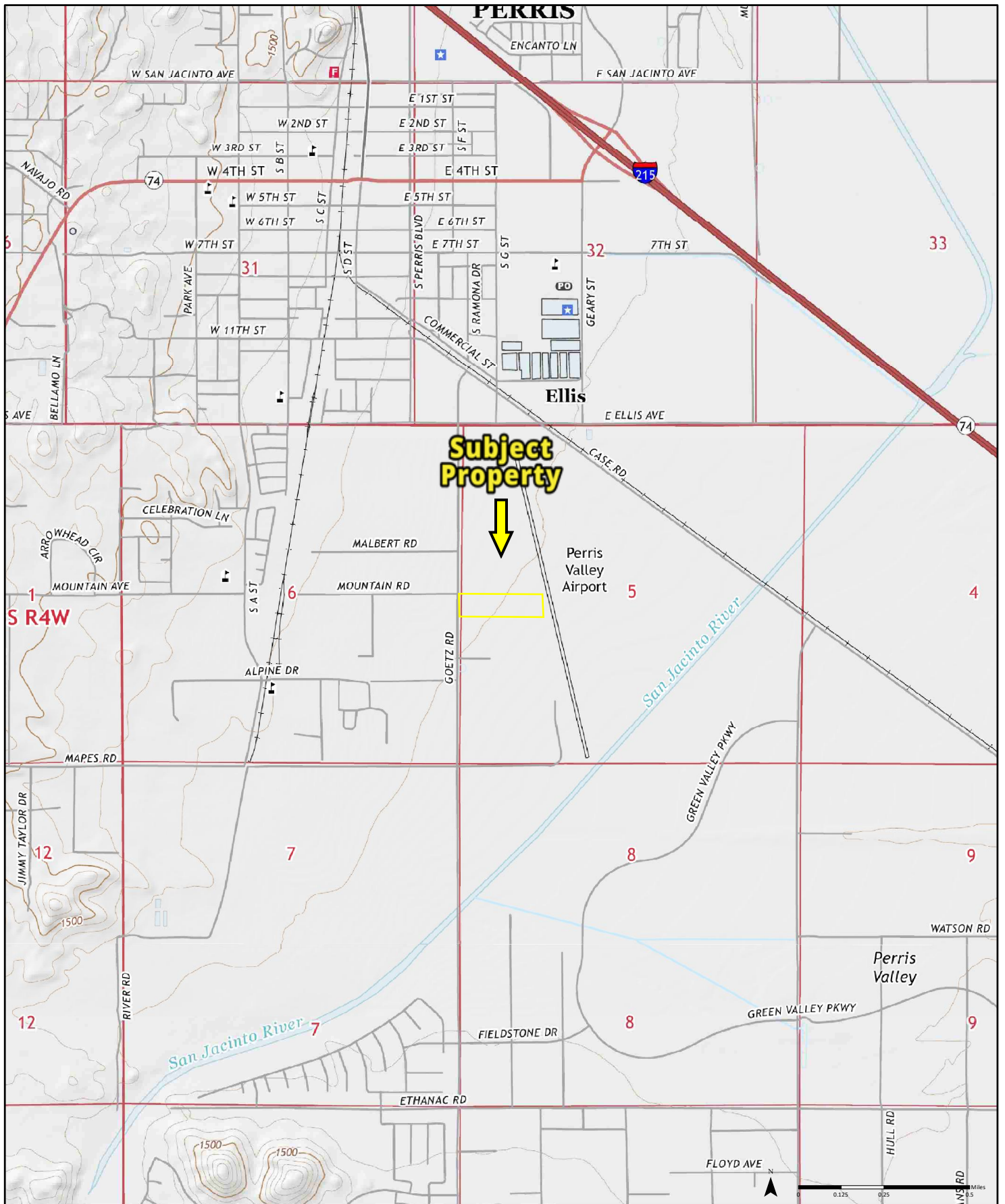
2015

Quadrangle(s): Perris, CA; Romoland, CA

Order No. 22042000909

Source: USGS 7.5 Minute Topographic Map

PARTNER



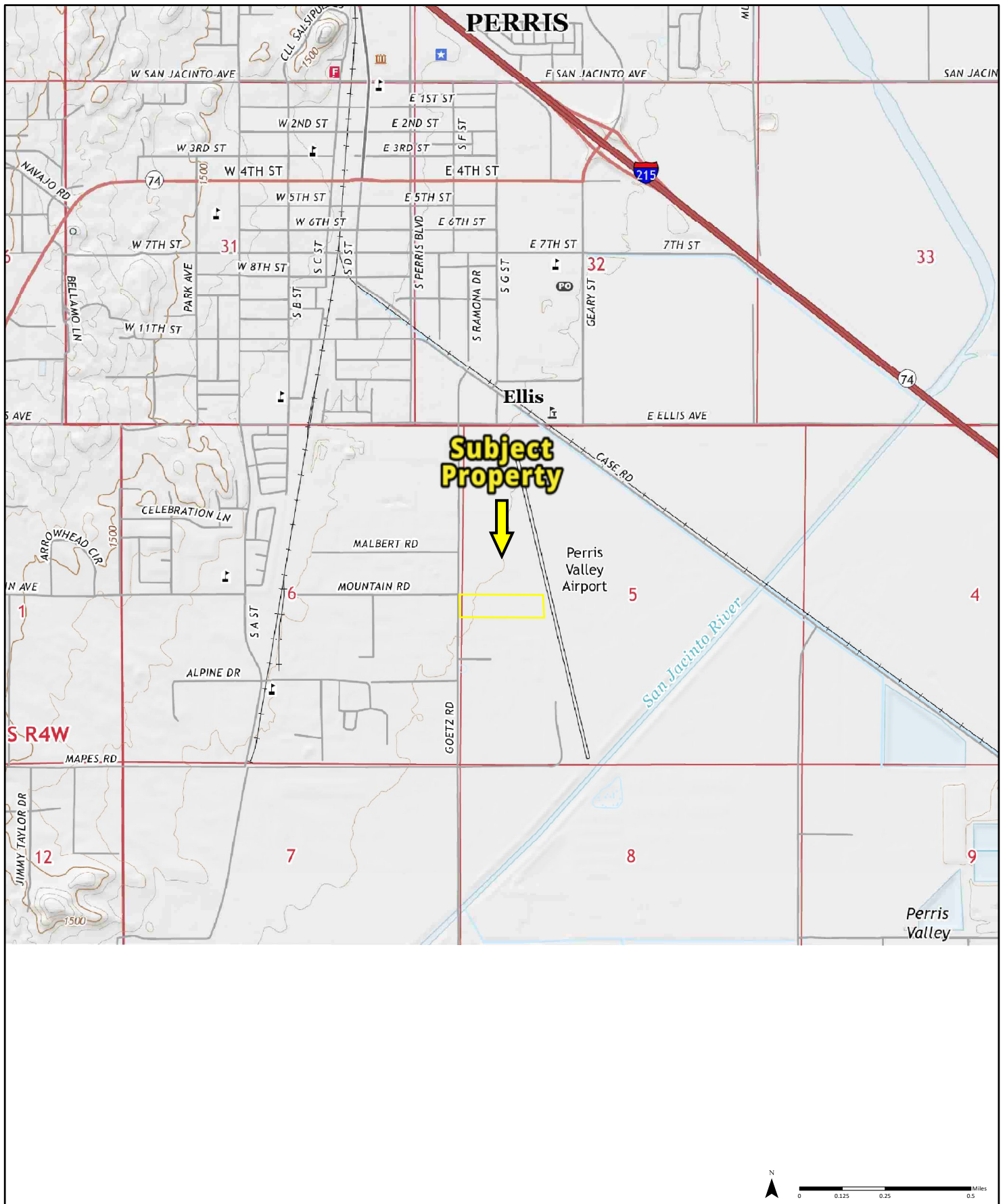
2018

Quadrangle(s): Perris, CA; Romoland, CA

Order No. 22042000909

Source: USGS 7.5 Minute Topographic Map

PARTNER



2021

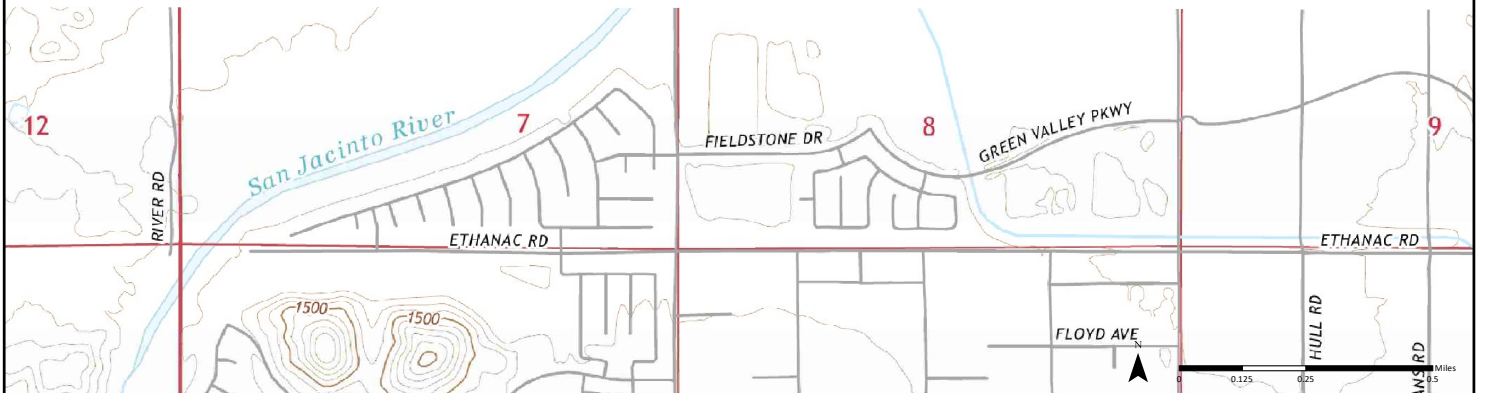
Quadrangle(s): Perris, CA

Order No. 22042000909

Source: USGS 7.5 Minute Topographic Map

PARTNER

**Subject
Property**



2022

Quadrangle(s): Romoland, CA

Order No. 22042000909

Source: USGS 7.5 Minute Topographic Map

PARTNER



Property Information

Order Number:	22042000909p
Date Completed:	April 21, 2022
Project Number:	22-367526.1
Project Property:	Dedeaux Goetz Perris 2021 Geotz Rd Perris CA 92570
Coordinates:	
Latitude:	33.7643715
Longitude:	-117.22140444
UTM Northing:	3736052.47403 Meters
UTM Easting:	479497.478787 Meters
UTM Zone:	UTM Zone 11S
Elevation:	1,420.17 ft
Slope Direction:	SE

Topographic Information.....	2
Hydrologic Information.....	4
Geologic Information.....	7
Soil Information.....	9
Wells and Additional Sources.....	20
Summary.....	21
Detail Report.....	23
Radon Information.....	32
Appendix.....	33
Liability Notice.....	35

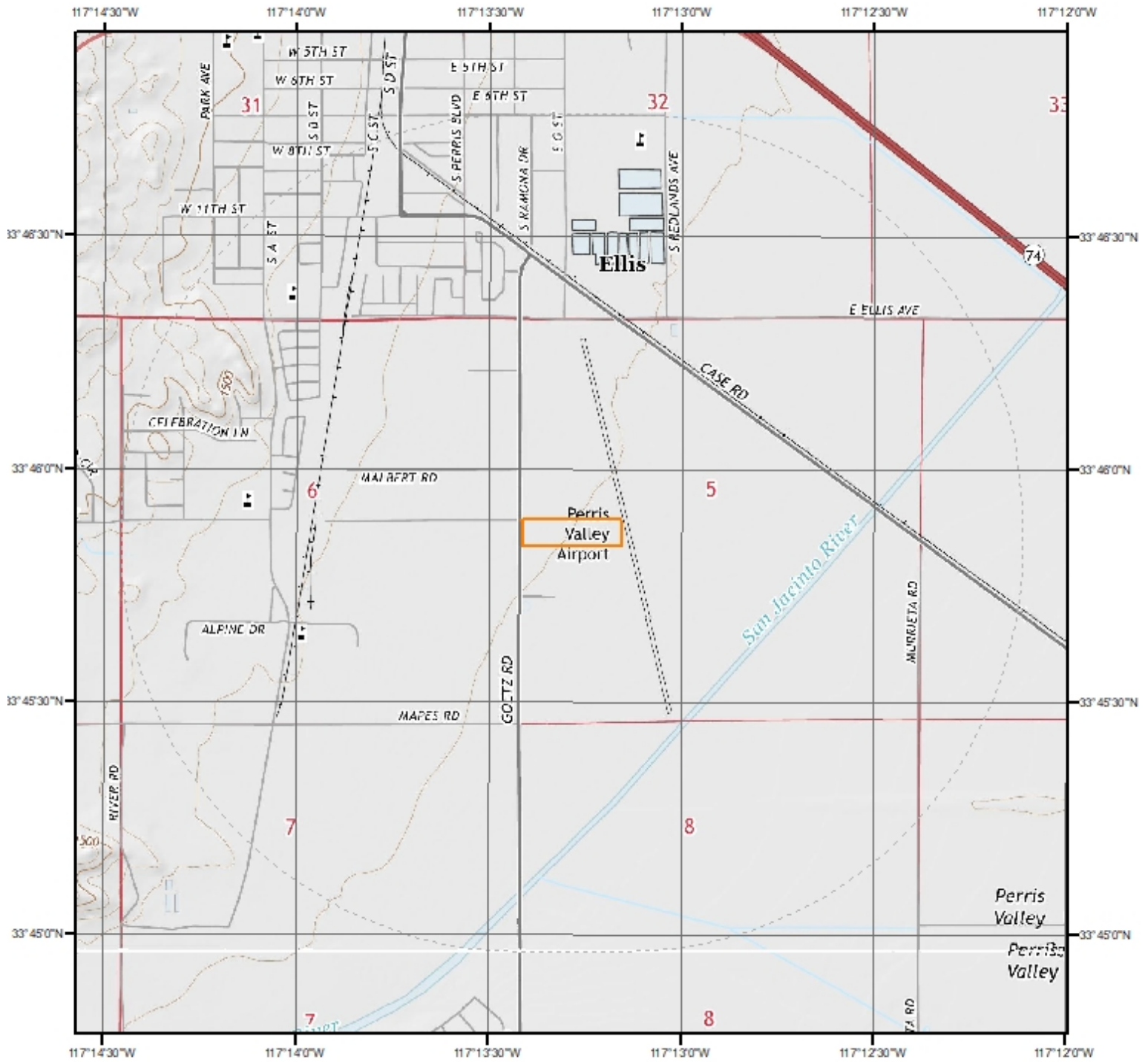
The ERIS **Physical Setting Report - PSR** provides comprehensive information about the physical setting around a site and includes a complete overview of topography and surface topology, in addition to hydrologic, geologic and soil characteristics. The location and detailed attributes of oil and gas wells, water wells, public water systems and radon are also included for review.

The compilation of both physical characteristics of a site and additional attribute data is useful in assessing the impact of migration of contaminants and subsequent impact on soils and groundwater.

Disclaimer

This Report does not provide a full environmental evaluation for the site or adjacent properties. Please see the terms and disclaimer at the end of the Report for greater detail.

Topographic Information



Current USGS Topo (2015)



Quadrangle(s): Perris, CA; Romoland, CA

Source: USGS 7.5 Minute Topographic Map

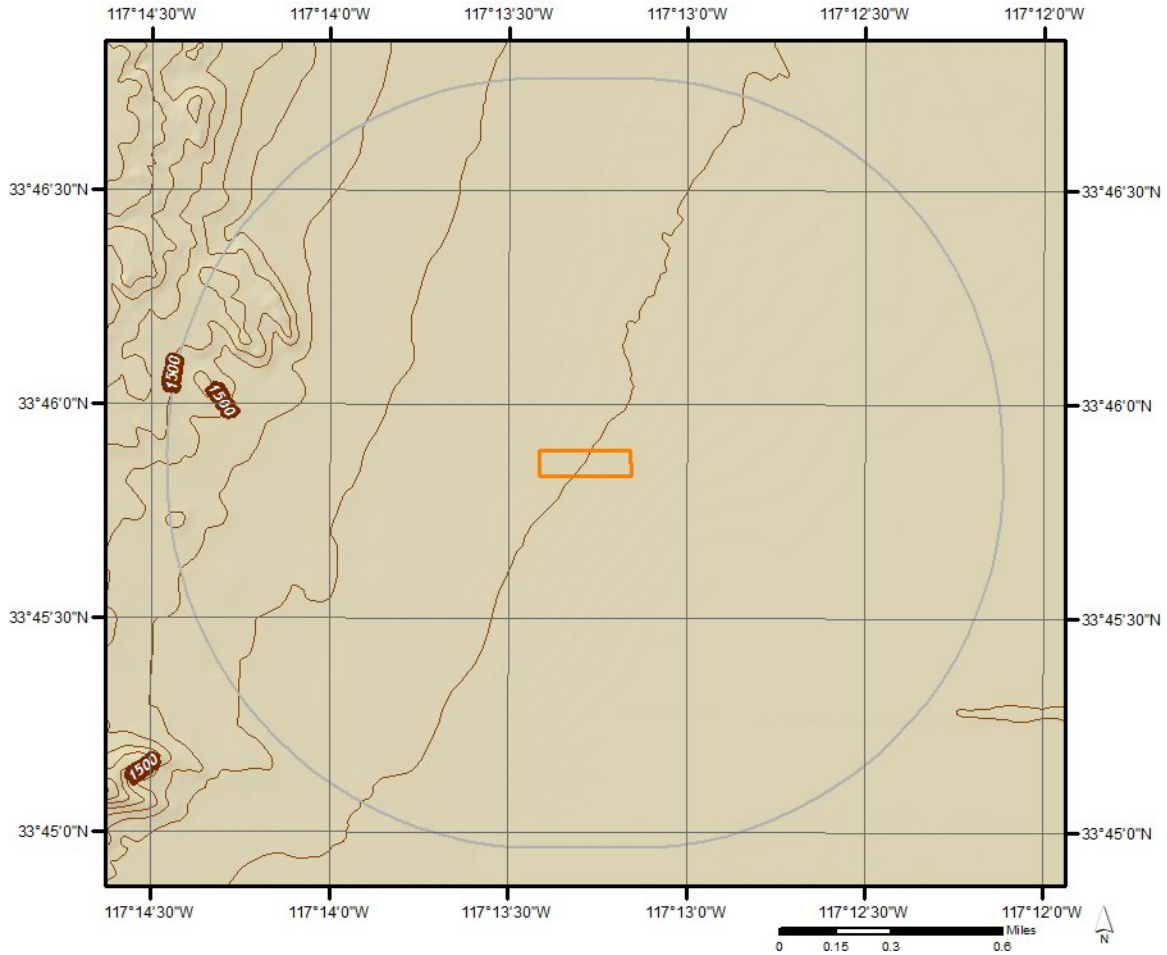


Topographic Information

The previous topographic map(s) are created by seamlessly merging and cutting current USGS topographic data. Below are shaded relief map(s), derived from USGS elevation data to show surrounding topography in further detail.

Topographic information at project property:

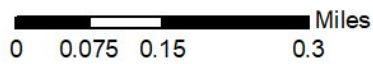
Elevation: 1,420.17 ft
Slope Direction: SE



Hydrologic Information



Wetland

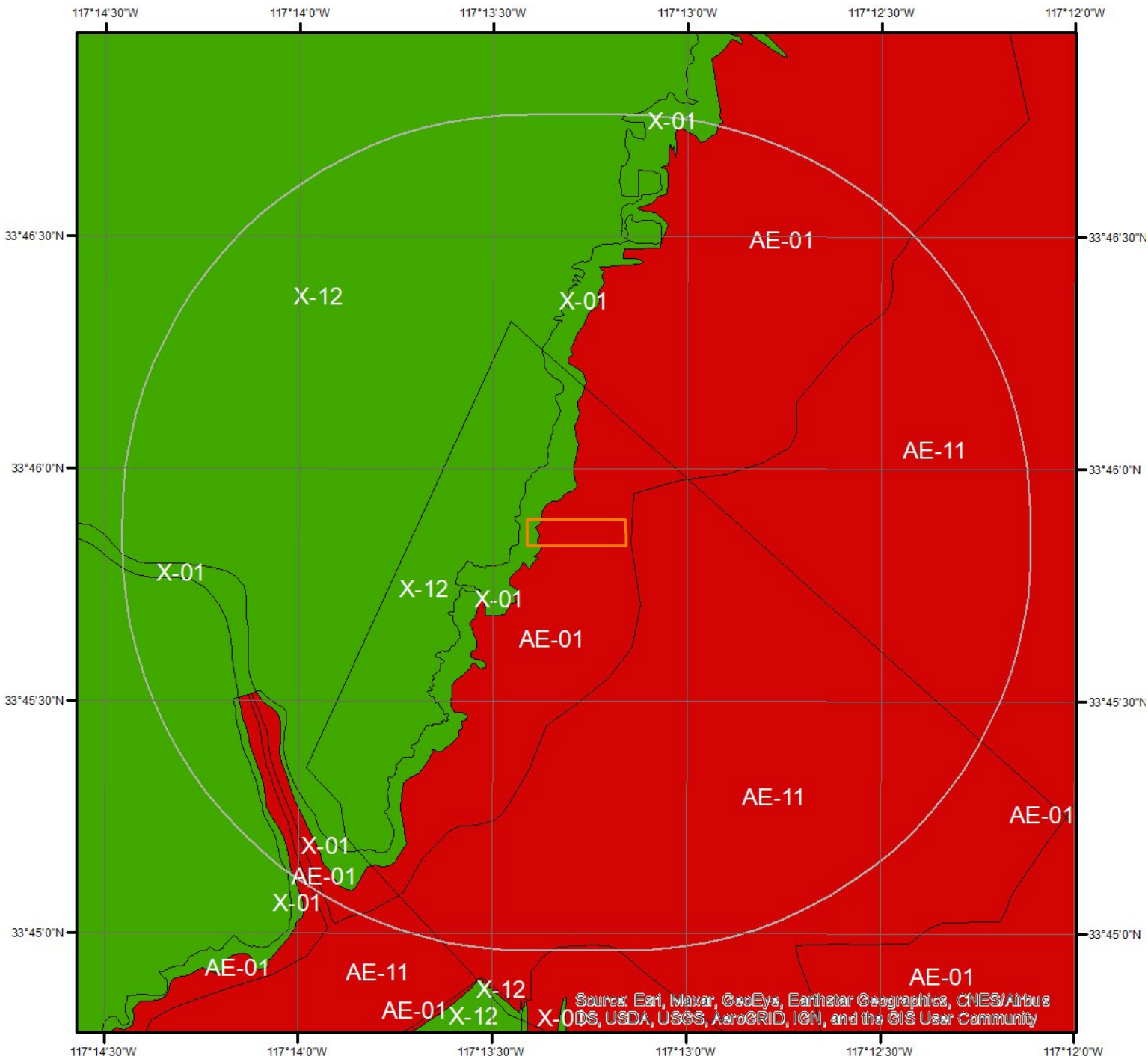


This map shows wetland existence using data from US Fish & Wildlife. Data coverage is shown to the right. Gray indicates no data available in the area.

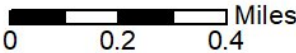
- | | |
|---|---|
|  Estuarine and Marine Deepwater |  Freshwater Pond |
|  Estuarine and Marine Wetland |  Lake |
|  Freshwater Emergent Wetland |  Other |
|  Freshwater Forested/Shrub Wetland |  Riverine |




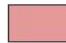




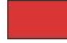





Hydrologic Information



Flood Hazard Zones



This map shows FEMA flood hazard zones. FIRM panels are shown to the right, and blank indicates no data is available.

 A	 AO	 X
 A99	 V	 OPEN WATER
 AE	 VE	 NOT POPULATED
 AH	 D	 AREA NOT INCLUDED



Hydrologic Information

The Wetland Type map shows wetland existence overlaid on an aerial imagery. The Flood Hazard Zones map shows FEMA flood hazard zones overlaid on an aerial imagery. Relevant FIRM panels and detailed zone information is provided below. For detailed Zone descriptions please click the link: <https://floodadvocate.com/fema-zone-definitions>

Available FIRM Panels in area: 06065C1440H(effective:2014-08-18) 06065C2055H(effective:2014-08-18)

Flood Zone AE-01

Zone: AE
Zone subtype:

Flood Zone AE-11

Zone: AE
Zone subtype: FLOODWAY

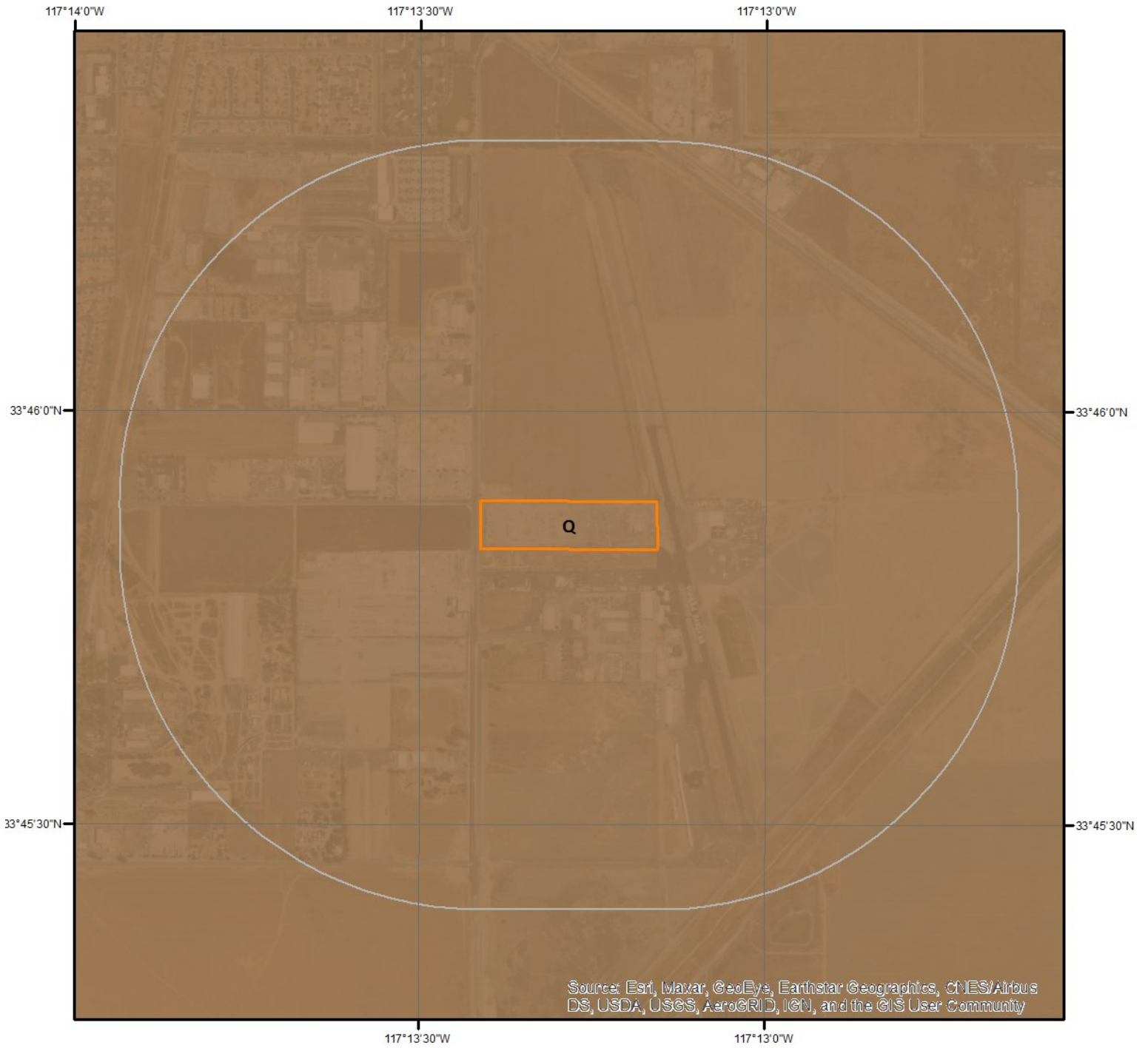
Flood Zone X-01

Zone: X
Zone subtype: 0.2 PCT ANNUAL CHANCE FLOOD HAZARD

Flood Zone X-12

Zone: X
Zone subtype: AREA OF MINIMAL FLOOD HAZARD

Geologic Information



Geologic Units

This maps shows geologic units in the area. Please refer to the report for detailed descriptions.



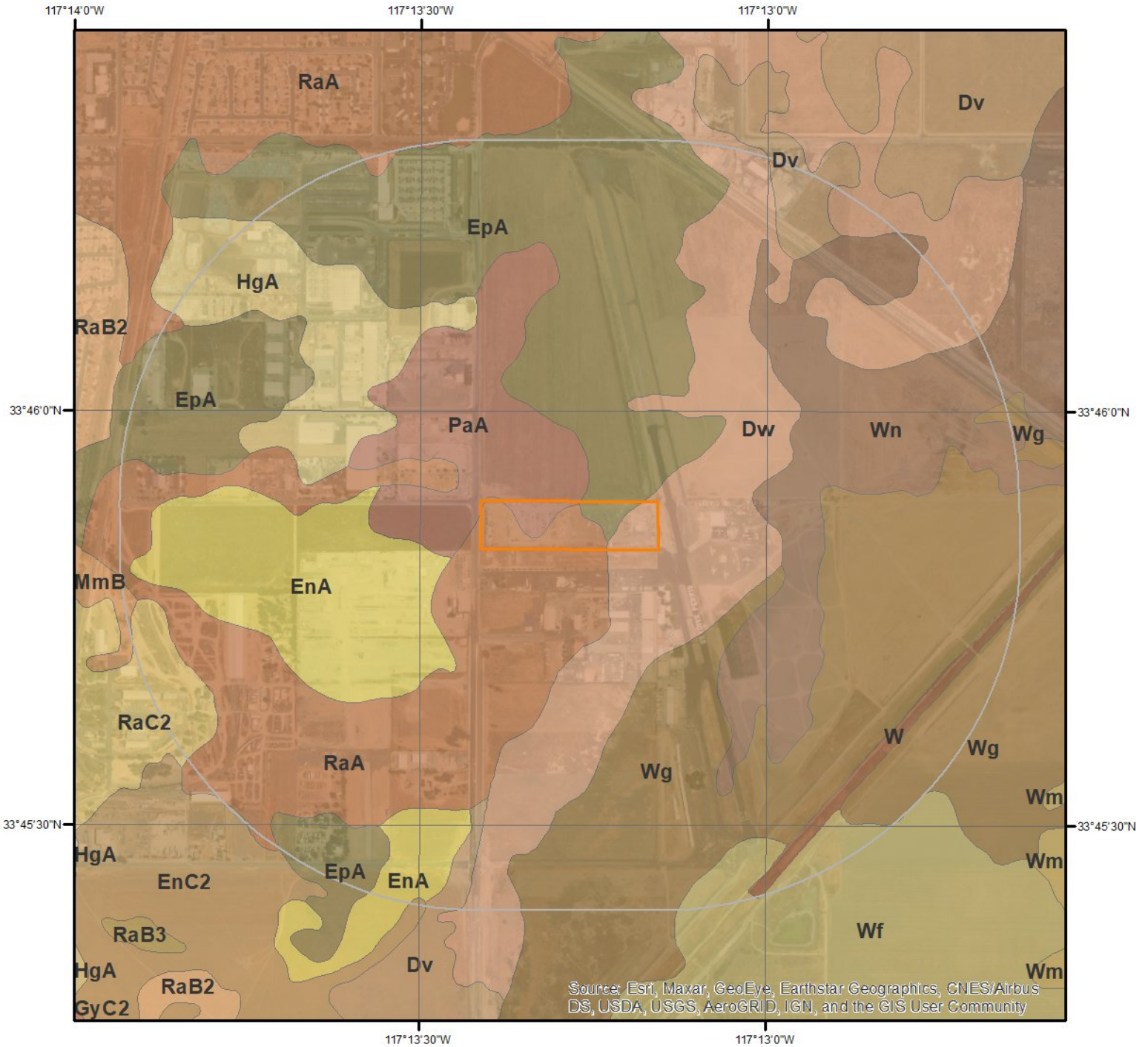
Geologic Information

The previous page shows USGS geology information. Detailed information about each unit is provided below.

Geologic Unit Q

Unit Name:	Quaternary alluvium and marine deposits
Unit Age:	Pliocene to Holocene
Primary Rock Type:	alluvium
Secondary Rock Type:	terrace
Unit Description:	Alluvium, lake, playa, and terrace deposits; unconsolidated and semi-consolidated. Mostly nonmarine, but includes marine deposits near the coast.

Soil Information



SSURGO Soils



This maps shows SSURGO soil units around the target property. Please refer to the report for detailed soil descriptions.



Soil Information

The previous page shows a soil map using SSURGO data from USDA Natural Resources Conservation Service. Detailed information about each unit is provided below.

Map Unit Dv (3.77%)

Map Unit Name:	Domino silt loam, saline-alkali
Bedrock Depth - Min:	null
Watertable Depth - Annual Min:	null
Drainage Class - Dominant:	Moderately well drained
Hydrologic Group - Dominant:	D - Soils in this group have high runoff potential when thoroughly wet. Water movement through the soil is restricted or very restricted.

Major components are printed below

Domino(85%)	
horizon H1(0cm to 36cm)	Silt loam
horizon H2(36cm to 69cm)	Silt loam
horizon H3(69cm to 91cm)	Cemented
horizon H4(91cm to 160cm)	Loam
horizon H4(91cm to 160cm)	Sandy loam

Component Description:

Minor map unit components are excluded from this report.

Map Unit: Dv - Domino silt loam, saline-alkali

Component: Domino (85%)

The Domino component makes up 85 percent of the map unit. Slopes are 0 to 2 percent. This component is on alluvial fans. The parent material consists of alluvium derived from granite. Depth to a root restrictive layer, duripan, is 20 to 40 inches. The natural drainage class is moderately well drained. Water movement in the most restrictive layer is very low. Available water to a depth of 60 inches (or restricted depth) is very low. Shrink-swell potential is moderate. This soil is rarely flooded. It is not ponded. There is no zone of water saturation within a depth of 72 inches. Organic matter content in the surface horizon is about 1 percent. This component is in the R019XD068CA Silty Basin ecological site. Nonirrigated land capability classification is 3s. Irrigated land capability classification is 3s. This soil does not meet hydric criteria. The calcium carbonate equivalent within 40 inches, typically, does not exceed 8 percent. The soil has a moderately saline horizon within 30 inches of the soil surface.

Component: Chino (10%)

Generated brief soil descriptions are created for major soil components. The Chino soil is a minor component.

Component: Willows (4%)

Generated brief soil descriptions are created for major soil components. The Willows soil is a minor component.

Component: Unnamed (1%)

Generated brief soil descriptions are created for major soil components. The Unnamed soil is a minor component.

Map Unit Dw (8.52%)

Map Unit Name:	Domino silt loam, strongly saline-alkali
Bedrock Depth - Min:	null
Watertable Depth - Annual Min:	null
Drainage Class - Dominant:	Moderately well drained
Hydrologic Group - Dominant:	D - Soils in this group have high runoff potential when thoroughly wet. Water movement through the soil is restricted or very restricted.

Major components are printed below

Domino(85%)	
horizon H1(0cm to 36cm)	Silt loam

Soil Information

horizon H2(36cm to 69cm)	Silt loam
horizon H3(69cm to 91cm)	Cemented
horizon H4(91cm to 160cm)	Loam
horizon H4(91cm to 160cm)	Sandy loam

Component Description:

Minor map unit components are excluded from this report.

Map Unit: Dw - Domino silt loam, strongly saline-alkali

Component: Domino (85%)

The Domino component makes up 85 percent of the map unit. Slopes are 0 to 2 percent. This component is on alluvial fans. The parent material consists of alluvium derived from granite. Depth to a root restrictive layer, duripan, is 20 to 40 inches. The natural drainage class is moderately well drained. Water movement in the most restrictive layer is very low. Available water to a depth of 60 inches (or restricted depth) is very low. Shrink-swell potential is moderate. This soil is rarely flooded. It is not ponded. There is no zone of water saturation within a depth of 72 inches. Organic matter content in the surface horizon is about 1 percent. This component is in the R019XD068CA Silty Basin ecological site. Nonirrigated land capability classification is 6w. Irrigated land capability classification is 4w. This soil does not meet hydric criteria. The calcium carbonate equivalent within 40 inches, typically, does not exceed 8 percent. The soil has a moderately saline horizon within 30 inches of the soil surface.

Component: Chino (10%)

Generated brief soil descriptions are created for major soil components. The Chino soil is a minor component.

Component: Willows (4%)

Generated brief soil descriptions are created for major soil components. The Willows soil is a minor component.

Component: Unnamed (1%)

Generated brief soil descriptions are created for major soil components. The Unnamed soil is a minor component.

Map Unit EnA (3.36%)

Map Unit Name:	Exeter sandy loam, 0 to 2 percent slopes
Bedrock Depth - Min:	null
Watertable Depth - Annual Min:	null
Drainage Class - Dominant:	Well drained
Hydrologic Group - Dominant:	C - Soils in this group have moderately high runoff potential when thoroughly wet. Water transmission through the soil is somewhat restricted.

Major components are printed below

Exeter(85%)

horizon H1(0cm to 41cm)	Sandy loam
horizon H2(41cm to 94cm)	Sandy clay loam
horizon H3(94cm to 127cm)	Indurated
horizon H4(127cm to 152cm)	Stratified sandy loam to silt loam

Component Description:

Minor map unit components are excluded from this report.

Map Unit: EnA - Exeter sandy loam, 0 to 2 percent slopes

Component: Exeter (85%)

The Exeter component makes up 85 percent of the map unit. Slopes are 0 to 2 percent. This component is on alluvial fans. The parent material consists of alluvium derived from granite. Depth to a root restrictive layer, duripan, is 20 to 40 inches. The natural drainage class is well drained. Water movement in the most restrictive layer is very low. Available water to a depth of 60 inches (or restricted depth) is low. Shrink-swell potential is moderate. This soil is rarely flooded. It is not ponded. There is no zone of water saturation within a depth of 72 inches. Organic matter content in the surface horizon is about 1 percent. This component is in the R019XD029CA Loamy (1975) ecological site. Nonirrigated land capability classification is 3s. Irrigated land capability classification is 3s. This soil does not meet hydric criteria. The calcium carbonate equivalent within 40 inches, typically, does not exceed 1 percent.

Component: Greenfield (4%)

Soil Information

Generated brief soil descriptions are created for major soil components. The Greenfield soil is a minor component.

Component: Monserate (4%)

Generated brief soil descriptions are created for major soil components. The Monserate soil is a minor component.

Component: Ramona (4%)

Generated brief soil descriptions are created for major soil components. The Ramona soil is a minor component.

Component: Unnamed (3%)

Generated brief soil descriptions are created for major soil components. The Unnamed soil is a minor component.

Map Unit EnC2 (4.79%)

Map Unit Name:	Exeter sandy loam, 2 to 8 percent slopes, eroded
Bedrock Depth - Min:	null
Watertable Depth - Annual Min:	null
Drainage Class - Dominant:	Well drained
Hydrologic Group - Dominant:	C - Soils in this group have moderately high runoff potential when thoroughly wet. Water transmission through the soil is somewhat restricted.

Major components are printed below

Exeter(85%)

horizon H1(0cm to 41cm)	Sandy loam
horizon H2(41cm to 94cm)	Sandy clay loam
horizon H3(94cm to 127cm)	Indurated
horizon H4(127cm to 152cm)	Stratified sandy loam to silt loam

Component Description:

Minor map unit components are excluded from this report.

Map Unit: EnC2 - Exeter sandy loam, 2 to 8 percent slopes, eroded

Component: Exeter (85%)

The Exeter component makes up 85 percent of the map unit. Slopes are 2 to 8 percent. This component is on alluvial fans. The parent material consists of alluvium derived from granite. Depth to a root restrictive layer, duripan, is 20 to 40 inches. The natural drainage class is well drained. Water movement in the most restrictive layer is very low. Available water to a depth of 60 inches (or restricted depth) is low. Shrink-swell potential is moderate. This soil is not flooded. It is not ponded. There is no zone of water saturation within a depth of 72 inches. Organic matter content in the surface horizon is about 1 percent. This component is in the R019XD029CA Loamy (1975) ecological site. Nonirrigated land capability classification is 3e. Irrigated land capability classification is 3e. This soil does not meet hydric criteria. The calcium carbonate equivalent within 40 inches, typically, does not exceed 1 percent.

Component: Ramona (5%)

Generated brief soil descriptions are created for major soil components. The Ramona soil is a minor component.

Component: Monserate (5%)

Generated brief soil descriptions are created for major soil components. The Monserate soil is a minor component.

Component: Greenfield (5%)

Generated brief soil descriptions are created for major soil components. The Greenfield soil is a minor component.

Map Unit EpA (9.28%)

Map Unit Name:	Exeter sandy loam, deep, 0 to 2 percent slopes
Bedrock Depth - Min:	null
Watertable Depth - Annual Min:	null
Drainage Class - Dominant:	Well drained
Hydrologic Group - Dominant:	C - Soils in this group have moderately high runoff potential when thoroughly wet. Water transmission through the soil is somewhat restricted.

Soil Information

Major components are printed below

Exeter(85%)

horizon H1(0cm to 41cm)	Sandy loam
horizon H2(41cm to 94cm)	Sandy clay loam
horizon H3(94cm to 127cm)	Indurated
horizon H4(127cm to 152cm)	Stratified sandy loam to silt loam

Component Description:

Minor map unit components are excluded from this report.

Map Unit: EpA - Exeter sandy loam, deep, 0 to 2 percent slopes

Component: Exeter (85%)

The Exeter component makes up 85 percent of the map unit. Slopes are 0 to 2 percent. This component is on alluvial fans. The parent material consists of alluvium derived from granite. Depth to a root restrictive layer, duripan, is 35 to 60 inches. The natural drainage class is well drained. Water movement in the most restrictive layer is very low. Available water to a depth of 60 inches (or restricted depth) is low. Shrink-swell potential is moderate. This soil is rarely flooded. It is not ponded. There is no zone of water saturation within a depth of 72 inches. Organic matter content in the surface horizon is about 1 percent. This component is in the R019XD029CA Loamy (1975) ecological site. Nonirrigated land capability classification is 3e. Irrigated land capability classification is 2s. This soil does not meet hydric criteria. The calcium carbonate equivalent within 40 inches, typically, does not exceed 1 percent.

Component: Monserate (5%)

Generated brief soil descriptions are created for major soil components. The Monserate soil is a minor component.

Component: Greenfield (5%)

Generated brief soil descriptions are created for major soil components. The Greenfield soil is a minor component.

Component: Ramona (5%)

Generated brief soil descriptions are created for major soil components. The Ramona soil is a minor component.

Map Unit HgA (2.11%)

Map Unit Name:	Hanford fine sandy loam, 0 to 2 percent slopes
Bedrock Depth - Min:	null
Watertable Depth - Annual Min:	null
Drainage Class - Dominant:	Well drained
Hydrologic Group - Dominant:	A - Soils in this group have low runoff potential when thoroughly wet. Water is transmitted freely through the soil.

Major components are printed below

Hanford(85%)

horizon H1(0cm to 20cm)	Fine sandy loam
horizon H2(20cm to 102cm)	Fine sandy loam
horizon H3(102cm to 152cm)	Stratified loamy sand to coarse sandy loam

Component Description:

Minor map unit components are excluded from this report.

Map Unit: HgA - Hanford fine sandy loam, 0 to 2 percent slopes

Component: Hanford (85%)

The Hanford component makes up 85 percent of the map unit. Slopes are 0 to 2 percent. This component is on alluvial fans. The parent material consists of alluvium derived from granite. Depth to a root restrictive layer is greater than 60 inches. The natural drainage class is well drained. Water movement in the most restrictive layer is high. Available water to a depth of 60 inches (or restricted depth) is moderate. Shrink-swell potential is low. This soil is rarely flooded. It is not ponded. There is no zone of water saturation within a depth of 72 inches. Organic matter content in the surface horizon is about 1 percent. This component is in the R019XD029CA Loamy (1975) ecological site. Nonirrigated land capability classification is 3c. Irrigated land capability classification is 1. This soil does not meet hydric criteria.

Soil Information

Component: Ramona (5%)

Generated brief soil descriptions are created for major soil components. The Ramona soil is a minor component.

Component: Tujunga (5%)

Generated brief soil descriptions are created for major soil components. The Tujunga soil is a minor component.

Component: Greenfield (5%)

Generated brief soil descriptions are created for major soil components. The Greenfield soil is a minor component.

Map Unit MmB (3.08%)

Map Unit Name:	Monserate sandy loam, 0 to 5 percent slopes
Bedrock Depth - Min:	null
Watertable Depth - Annual Min:	null
Drainage Class - Dominant:	Well drained
Hydrologic Group - Dominant:	C - Soils in this group have moderately high runoff potential when thoroughly wet. Water transmission through the soil is somewhat restricted.

Major components are printed below

Monserate(85%)

horizon H1(0cm to 25cm)	Sandy loam
horizon H2(25cm to 71cm)	Sandy clay loam
horizon H3(71cm to 114cm)	Indurated
horizon H4(114cm to 145cm)	Cemented
horizon H5(145cm to 178cm)	Coarse sandy loam
horizon H5(145cm to 178cm)	Loamy coarse sand

Component Description:

Minor map unit components are excluded from this report.

Map Unit: MmB - Monserate sandy loam, 0 to 5 percent slopes

Component: Monserate (85%)

The Monserate component makes up 85 percent of the map unit. Slopes are 0 to 5 percent. This component is on alluvial fans. The parent material consists of alluvium derived from granite. Depth to a root restrictive layer, duripan, is 20 to 39 inches. The natural drainage class is well drained. Water movement in the most restrictive layer is very low. Available water to a depth of 60 inches (or restricted depth) is low. Shrink-swell potential is moderate. This soil is not flooded. It is not ponded. There is no zone of water saturation within a depth of 72 inches. Organic matter content in the surface horizon is about 1 percent. This component is in the R019XD029CA Loamy (1975) ecological site. Nonirrigated land capability classification is 4e. Irrigated land capability classification is 3e. This soil does not meet hydric criteria.

Component: Greenfield (5%)

Generated brief soil descriptions are created for major soil components. The Greenfield soil is a minor component.

Component: Hanford (5%)

Generated brief soil descriptions are created for major soil components. The Hanford soil is a minor component.

Component: Tujunga (5%)

Generated brief soil descriptions are created for major soil components. The Tujunga soil is a minor component.

Map Unit PaA (2.25%)

Map Unit Name:	Pachappa fine sandy loam, 0 to 2 percent slopes
Bedrock Depth - Min:	null
Watertable Depth - Annual Min:	null
Drainage Class - Dominant:	Well drained
Hydrologic Group - Dominant:	B - Soils in this group have moderately low runoff potential when thoroughly wet. Water transmission through the soil is unimpeded.

Soil Information

Major components are printed below

Pachappa(85%)

horizon H1(0cm to 51cm)

Fine sandy loam

horizon H2(51cm to 160cm)

Loam

Component Description:

Minor map unit components are excluded from this report.

Map Unit: PaA - Pachappa fine sandy loam, 0 to 2 percent slopes

Component: Pachappa (85%)

The Pachappa component makes up 85 percent of the map unit. Slopes are 0 to 2 percent. This component is on alluvial fans. The parent material consists of alluvium derived from granite. Depth to a root restrictive layer is greater than 60 inches. The natural drainage class is well drained. Water movement in the most restrictive layer is moderately high. Available water to a depth of 60 inches (or restricted depth) is moderate. Shrink-swell potential is moderate. This soil is rarely flooded. It is not ponded. There is no zone of water saturation within a depth of 72 inches. Organic matter content in the surface horizon is about 1 percent. This component is in the R019XD029CA Loamy (1975) ecological site. Nonirrigated land capability classification is 3c. Irrigated land capability classification is 1 This soil does not meet hydric criteria. The calcium carbonate equivalent within 40 inches, typically, does not exceed 3 percent. There are no saline horizons within 30 inches of the soil surface.

Component: Greenfield (5%)

Generated brief soil descriptions are created for major soil components. The Greenfield soil is a minor component.

Component: San Emigdio (5%)

Generated brief soil descriptions are created for major soil components. The San Emigdio soil is a minor component.

Component: Hanford (5%)

Generated brief soil descriptions are created for major soil components. The Hanford soil is a minor component.

Map Unit RaA (18.49%)

Map Unit Name:

Ramona sandy loam, 0 to 2 percent slopes

Bedrock Depth - Min:

null

Watertable Depth - Annual Min:

null

Drainage Class - Dominant:

Well drained

Hydrologic Group - Dominant:

C - Soils in this group have moderately high runoff potential when thoroughly wet. Water transmission through the soil is somewhat restricted.

Major components are printed below

Ramona(85%)

horizon H1(0cm to 36cm)

Sandy loam

horizon H2(36cm to 58cm)

Fine sandy loam

horizon H3(58cm to 173cm)

Sandy clay loam

horizon H4(173cm to 188cm)

Gravelly sandy loam

Component Description:

Minor map unit components are excluded from this report.

Map Unit: RaA - Ramona sandy loam, 0 to 2 percent slopes, MLRA 19

Component: Ramona (85%)

The Ramona component makes up 85 percent of the map unit. Slopes are 0 to 2 percent. This component is on alluvial plains, terraces, alluvial fans. The parent material consists of alluvium derived from granite. Depth to a root restrictive layer is greater than 60 inches. The natural drainage class is well drained. Water movement in the most restrictive layer is moderately high. Available water to a depth of 60 inches (or restricted depth) is moderate. Shrink-swell potential is low. This soil is not flooded. It is not ponded. There is no zone of water saturation within a depth of 72 inches. Organic matter content in the surface horizon is about 1 percent. This component is in the R019XD029CA Loamy (1975) ecological site. Nonirrigated land capability classification is 4s. Irrigated land capability classification is 2s. This soil does not meet hydric criteria.

Soil Information

Component: Greenfield (6%)

Generated brief soil descriptions are created for major soil components. The Greenfield soil is a minor component.

Component: Hanford (4%)

Generated brief soil descriptions are created for major soil components. The Hanford soil is a minor component.

Component: Tujunga (4%)

Generated brief soil descriptions are created for major soil components. The Tujunga soil is a minor component.

Component: Placentia (1%)

Generated brief soil descriptions are created for major soil components. The Placentia soil is a minor component.

Map Unit RaC2 (4.98%)

Map Unit Name:	Ramona sandy loam, 5 to 8 percent slopes, eroded
Bedrock Depth - Min:	null
Watertable Depth - Annual Min:	null
Drainage Class - Dominant:	Well drained
Hydrologic Group - Dominant:	C - Soils in this group have moderately high runoff potential when thoroughly wet. Water transmission through the soil is somewhat restricted.

Major components are printed below

Ramona(85%)	
horizon H1(0cm to 36cm)	Sandy loam
horizon H2(36cm to 58cm)	Fine sandy loam
horizon H3(58cm to 173cm)	Sandy clay loam
horizon H4(173cm to 188cm)	Gravelly sandy loam

Component Description:

Minor map unit components are excluded from this report.

Map Unit: RaC2 - Ramona sandy loam, 5 to 8 percent slopes, eroded

Component: Ramona (85%)

The Ramona component makes up 85 percent of the map unit. Slopes are 5 to 8 percent. This component is on alluvial fans, terraces. The parent material consists of alluvium derived from granite. Depth to a root restrictive layer is greater than 60 inches. The natural drainage class is well drained. Water movement in the most restrictive layer is moderately high. Available water to a depth of 60 inches (or restricted depth) is moderate. Shrink-swell potential is low. This soil is not flooded. It is not ponded. There is no zone of water saturation within a depth of 72 inches. Organic matter content in the surface horizon is about 1 percent. This component is in the R019XD029CA Loamy (1975) ecological site. Nonirrigated land capability classification is 3e. Irrigated land capability classification is 3e. This soil does not meet hydric criteria. The calcium carbonate equivalent within 40 inches, typically, does not exceed 1 percent.

Component: Hanford (5%)

Generated brief soil descriptions are created for major soil components. The Hanford soil is a minor component.

Component: Tujunga (5%)

Generated brief soil descriptions are created for major soil components. The Tujunga soil is a minor component.

Component: Greenfield (5%)

Generated brief soil descriptions are created for major soil components. The Greenfield soil is a minor component.

Map Unit W (3.64%)

Map Unit Name: Water

No more attributes available for this map unit

Component Description:

Minor map unit components are excluded from this report.

Soil Information

Map Unit: W - Water

Component: Water (100%)

Generated brief soil descriptions are created for major soil components. The Water is a miscellaneous area.

Map Unit Wf (14.71%)

Map Unit Name:	Willows silty clay
Bedrock Depth - Min:	null
Watertable Depth - Annual Min:	0cm
Drainage Class - Dominant:	Poorly drained
Hydrologic Group - Dominant:	D - Soils in this group have high runoff potential when thoroughly wet. Water movement through the soil is restricted or very restricted.

Major components are printed below

Willows(85%)

horizon H1(0cm to 25cm)	Silty clay
horizon H2(25cm to 152cm)	Clay

Component Description:

Minor map unit components are excluded from this report.

Map Unit: Wf - Willows silty clay

Component: Willows (85%)

The Willows component makes up 85 percent of the map unit. Slopes are 0 to 2 percent. This component is on basin floors. The parent material consists of alluvium derived from mixed sources. Depth to a root restrictive layer is greater than 60 inches. The natural drainage class is poorly drained. Water movement in the most restrictive layer is low. Available water to a depth of 60 inches (or restricted depth) is low. Shrink-swell potential is high. This soil is rarely flooded. It is not ponded. A seasonal zone of water saturation is at 0 inches during January, February, March, December. Organic matter content in the surface horizon is about 2 percent. This component is in the R019XD068CA Silty Basin ecological site. Nonirrigated land capability classification is 4w. Irrigated land capability classification is 3w. This soil does not meet hydric criteria. The calcium carbonate equivalent within 40 inches, typically, does not exceed 3 percent. The soil has a moderately saline horizon within 30 inches of the soil surface. The soil has a maximum sodium adsorption ratio of 1 within 30 inches of the soil surface.

Component: Chino (5%)

Generated brief soil descriptions are created for major soil components. The Chino soil is a minor component.

Component: Madera (5%)

Generated brief soil descriptions are created for major soil components. The Madera soil is a minor component.

Component: Domino (5%)

Generated brief soil descriptions are created for major soil components. The Domino soil is a minor component.

Map Unit Wg (14.52%)

Map Unit Name:	Willows silty clay, saline-alkali
Bedrock Depth - Min:	null
Watertable Depth - Annual Min:	0cm
Drainage Class - Dominant:	Poorly drained
Hydrologic Group - Dominant:	D - Soils in this group have high runoff potential when thoroughly wet. Water movement through the soil is restricted or very restricted.

Major components are printed below

Willows(85%)

horizon H1(0cm to 25cm)	Silty clay
horizon H2(25cm to 152cm)	Clay

Component Description:

Soil Information

Minor map unit components are excluded from this report.

Map Unit: Wg - Willows silty clay, saline-alkali

Component: Willows (85%)

The Willows component makes up 85 percent of the map unit. Slopes are 0 to 2 percent. This component is on basin floors. The parent material consists of alluvium derived from mixed sources. Depth to a root restrictive layer is greater than 60 inches. The natural drainage class is poorly drained. Water movement in the most restrictive layer is low. Available water to a depth of 60 inches (or restricted depth) is low. Shrink-swell potential is high. This soil is rarely flooded. It is not ponded. A seasonal zone of water saturation is at 0 inches during January, February, March, December. Organic matter content in the surface horizon is about 2 percent. This component is in the R019XD068CA Silty Basin ecological site. Nonirrigated land capability classification is 4w. Irrigated land capability classification is 3w. This soil does not meet hydric criteria. The calcium carbonate equivalent within 40 inches, typically, does not exceed 3 percent. The soil has a moderately saline horizon within 30 inches of the soil surface. The soil has a maximum sodium adsorption ratio of 1 within 30 inches of the soil surface.

Component: Domino (5%)

Generated brief soil descriptions are created for major soil components. The Domino soil is a minor component.

Component: Chino (5%)

Generated brief soil descriptions are created for major soil components. The Chino soil is a minor component.

Component: Madera (5%)

Generated brief soil descriptions are created for major soil components. The Madera soil is a minor component.

Map Unit Wn (6.51%)

Map Unit Name:	Willows silty clay, deep, strongly saline-alkali
Bedrock Depth - Min:	null
Watertable Depth - Annual Min:	0cm
Drainage Class - Dominant:	Poorly drained
Hydrologic Group - Dominant:	D - Soils in this group have high runoff potential when thoroughly wet. Water movement through the soil is restricted or very restricted.

Major components are printed below

Willows(85%)

horizon H1(0cm to 25cm)	Silty clay
horizon H2(25cm to 107cm)	Clay

Component Description:

Minor map unit components are excluded from this report.

Map Unit: Wn - Willows silty clay, deep, strongly saline-alkali

Component: Willows (85%)

The Willows component makes up 85 percent of the map unit. Slopes are 0 to 2 percent. This component is on basin floors. The parent material consists of alluvium derived from mixed sources. Depth to a root restrictive layer is greater than 60 inches. The natural drainage class is poorly drained. Water movement in the most restrictive layer is low. Available water to a depth of 60 inches (or restricted depth) is low. Shrink-swell potential is high. This soil is rarely flooded. It is not ponded. A seasonal zone of water saturation is at 0 inches during January, February, March, December. Organic matter content in the surface horizon is about 2 percent. This component is in the R019XD068CA Silty Basin ecological site. Nonirrigated land capability classification is 7w. Irrigated land capability classification is 4w. This soil does not meet hydric criteria. The calcium carbonate equivalent within 40 inches, typically, does not exceed 3 percent. The soil has a moderately saline horizon within 30 inches of the soil surface. The soil has a maximum sodium adsorption ratio of 1 within 30 inches of the soil surface.

Component: Madera (5%)

Generated brief soil descriptions are created for major soil components. The Madera soil is a minor component.

Component: Domino (5%)

Generated brief soil descriptions are created for major soil components. The Domino soil is a minor component.

Component: Chino (5%)

Soil Information

Generated brief soil descriptions are created for major soil components. The Chino soil is a minor component.