



November 25, 2024

First Industrial Realty Trust, Inc.  
First Industrial L.P.  
First Industrial Acquisition II, LLC  
and their Affiliates and Assigns  
C/O Weis Environmental LLC  
1938 Kellogg Avenue, Suite 116  
Carlsbad, CA 92008

RE: Harley Knox II; Crotch's Bumble Bee Habitat Assessment Survey Report (Negative).

Mr. Weis,

Per the request of the City, a habitat assessment was conducted to evaluate the potential for the project site to support the following sensitive species: Crotch's bumble bee (*Bombus crotchii*). The general assessment was based on existing data from a site visit conducted in November 2024 regarding the quality of the habitat present in relation to the species requirements and a search of the California Natural Diversity Data Base (CNDDB) species occurrence database (California Department of Fish and Wildlife [CDFW] 2024) and the U.S. Fish and Wildlife Service (USFWS) all species occurrence database (USFWS 2022).

#### Methods

The habitat assessment survey was conducted in the survey area on November 22, 2024. The surveys were initiated at 1015 and completed at 1115. Weather conditions during the survey included clear skies, temperatures ranged from 65° to 68° Fahrenheit, and calm winds.

#### Potential for Crotch's Bumblebee

The Crotch's bumble bee is a state of California candidate for listing as an endangered species (CDFW 2023). This species prefers open grassland and shrub habitats that support populations of nectar plants such as snapdragon (*Antirrhinum* spp.), *phacelia* (*Phacelia* sp.), *clarkia* (*Clarkia* spp.), bush poppy (*Dendromecon rigida*), California poppy (*Eschscholzia californica*), and buckwheat (*Eriogonum* spp.). In California, its distribution is exclusive to coastal areas from San Diego to Redding.

There is a low potential for Crotch's bumble bee to forage or nest on the project site. Much of the project site supports historic agriculture and office development. As a result, the maintained (tilled) dirt lacks vegetation, specifically the preferred nectar plants for the species. In addition, surrounding areas of the project site have been historically used for agricultural and development purposes. These disturbances have affected the overall habitat quality of the area.

No historic occurrence of Crotch's bumble bee was recorded in the vicinity.

The survey is negative for onsite presence of appropriate Cortch's Bumble Bee habitat and no additional surveys

are required.

If you have any questions concerning this survey or results, please do not hesitate to contact me.

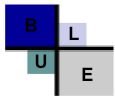
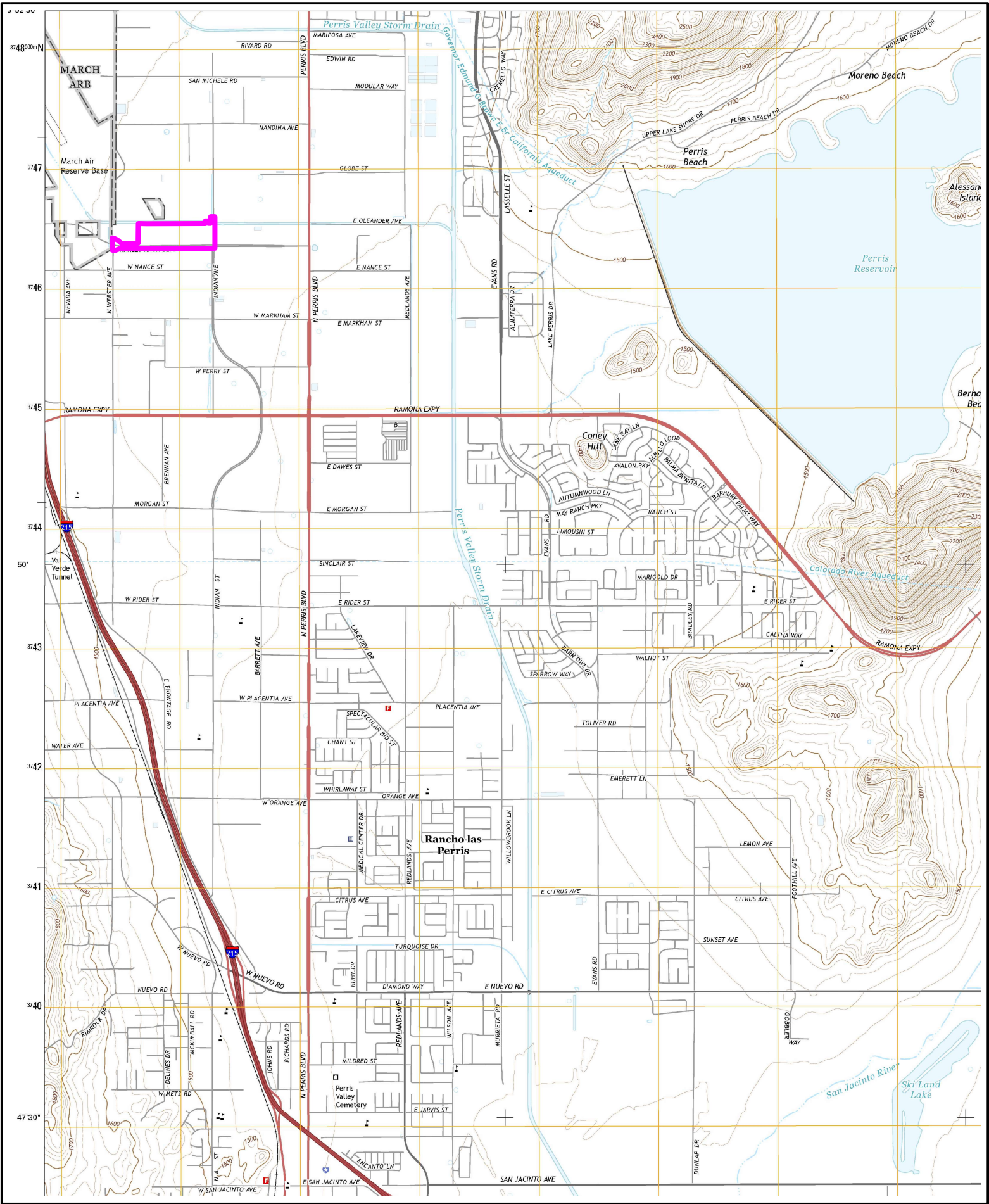
Sincerely,




Michael K. Jefferson  
President  
BLUE Consulting Group

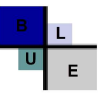
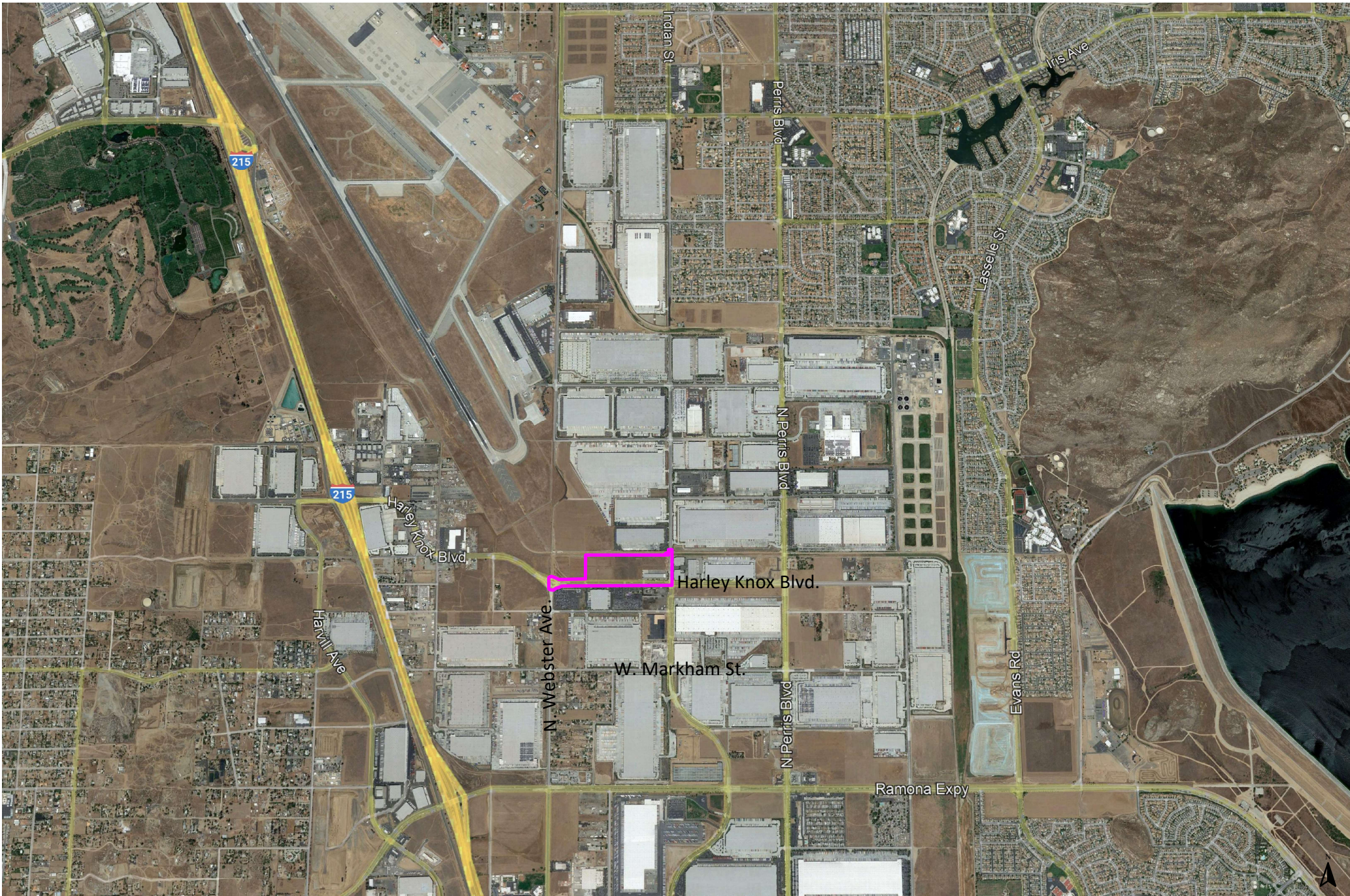
Attachments: Figure 1 Regional Location Aerial  
Figure 2 Property Aerial

Photographs 1-2



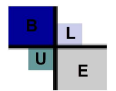
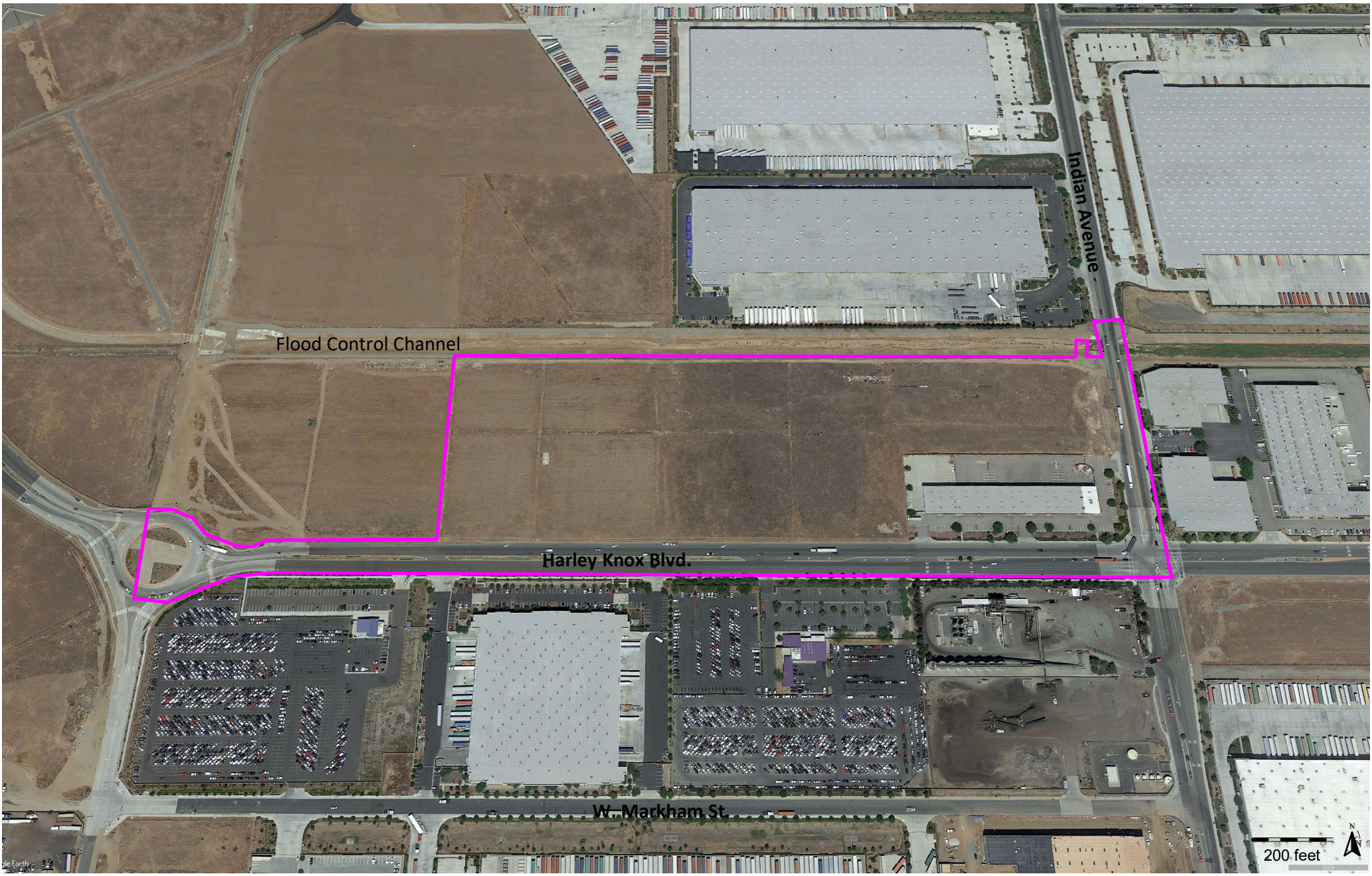
 Property

**FIGURE 1**  
USGS Topo  
Project Location



 Property

**FIGURE 2**  
**Regional Location**  
**Map**



 Property

**FIGURE 3**  
**Property Aerial**



**Photograph 1** Looking East; SE corner - Disturbed area



**Photograph 2** Southern PL Limit - Looking NE; Disturbed Area