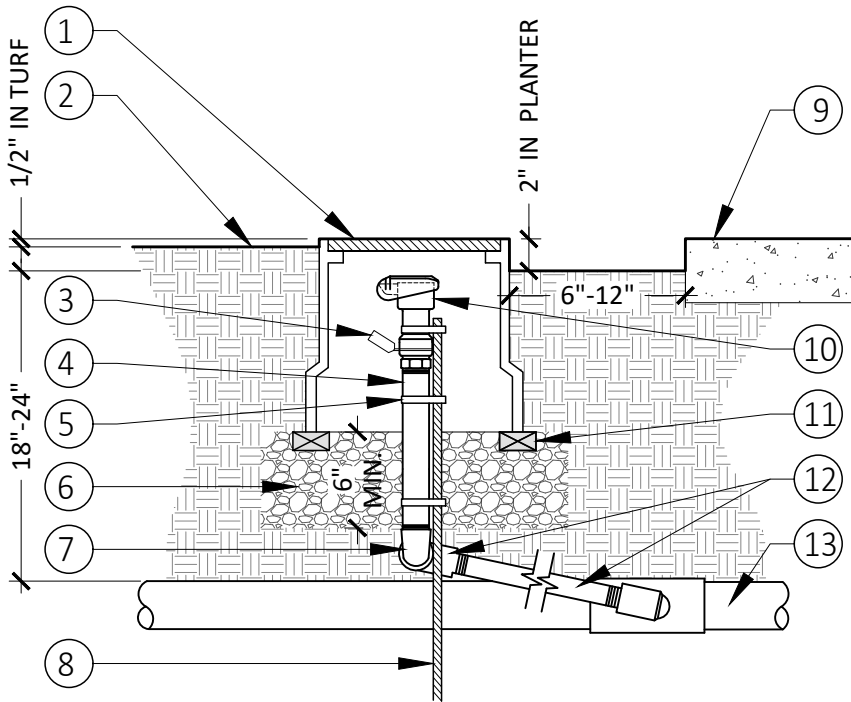




# CITY OF PERRIS

## DEVELOPMENT SERVICES DEPARTMENT PLANNING DIVISION

135 NORTH D STREET, PERRIS, CA 92570-2200  
(951) 943-5003



### LEGEND:

- ① VALVE BOX WITH LOCKING LID AND HEAT BRAND 'QC' IN 2" LETTERS
- ② FINISH GRADE
- ③ I.D. TAG
- ④ BRASS NIPPLE
- ⑤ STAINLESS STEEL SCREW CLAMP
- ⑥ 3/4" CRUSHED AGGREGATE (WASHED)
- ⑦ BRASS 90 ELL
- ⑧ #4 REBAR STAKE (24" MIN)
- ⑨ HARDSCAPE (WHERE OCCURS)
- ⑩ QUICK COUPLING VALVE WITH LOCKING COVER AND KEY LUG
- ⑪ COMMON BRICK (APPROX. 4x2x8)
- ⑫ BRASS 90 STREET ELL FITTING
- ⑬ PRESSURE MAIN LINE

### NOTES:

1. INSTALL VALVE BOX EXTENSIONS AS REQUIRED TO ACHIEVE PROPER VALVE INSTALLATION AT MAIN LINE DEPTH. EXTENSIONS TO BE THE SAME BRAND.
2. INSTALL CHRISTY I.D. TAGS ON ALL RECYCLED IRRIGATION SYSTEMS.
3. VALVE BOX LID SHALL BE GREEN UNLESS A DIFFERENT COLOR IS CALLED FOR BY PLANS.
4. QUICK COUPLERS SHALL HAVE A LOCKING COVER

SCALE: 1"=1'-0"

## QUICK COUPLER VALVE



DATE: 08/12/24