



CITY OF PERRIS

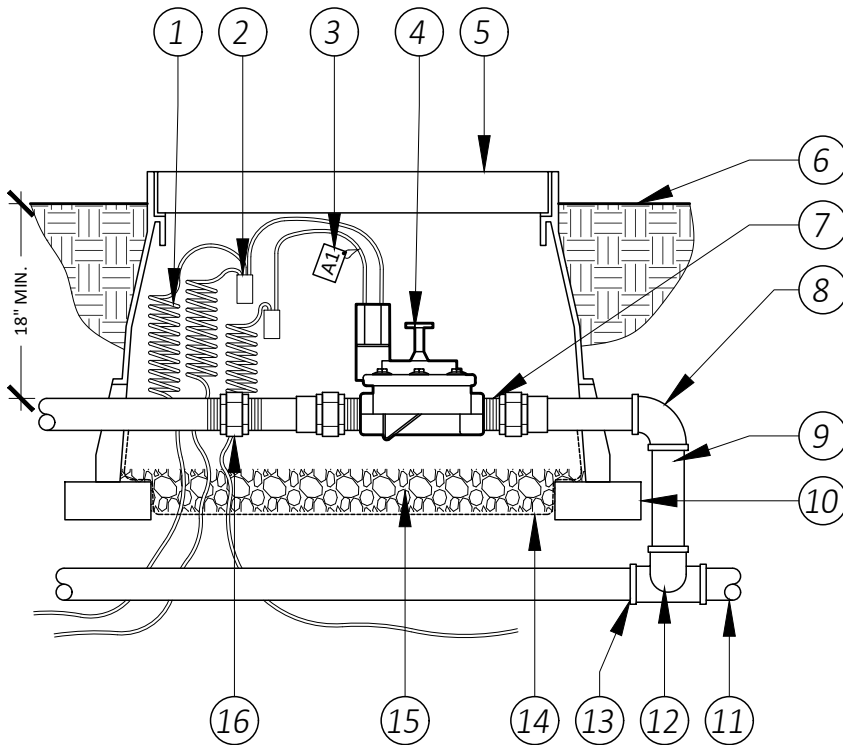
DEVELOPMENT SERVICES DEPARTMENT

PLANNING DIVISION

135 NORTH D STREET, PERRIS, CA 92570-2200
(951) 943-5003

LEGEND:

- ① 30" LINEAR LENGTH OF WIRE, COILED
- ② WATERPROOF CONNECTION
- ③ ID TAG: RAIN BIRD VID SERIES OR EQUAL
- ④ REMOTE CONTROL VALVE
- ⑤ VALVE BOX WITH COVER
- ⑥ TOP OF MULCH BELOW TOP OF COVER 1/2" FOR TURF & 1" FOR GROUND COVER
- ⑦ PVC SCH 80 NIPPLE
- ⑧ PVC SCH 40 ELL
- ⑨ PVC SCH 80 NIPPLE (LENGTH AS REQUIRED)
- ⑩ BRICK (1 OF 4)
- ⑪ PVC MAINLINE PIPE
- ⑫ SCH 40 NIPPLE (2" LENGTH, HIDDEN) AND SCH 40 ELL
- ⑬ PVC SCH 40 TEE OR ELL
- ⑭ 1/4" HARDWARE CLOTH TO PROTECT FROM BURROWING PESTS
- ⑮ 3" MIN. DEPTH OF 3/4" WASHED GRAVEL
- ⑯ PVC UNION (SIZE AS REQUIRED)



NOTES:

1. TEE OFF MAINLINE TO BE SAME SIZE AS LATERAL LINE EXITING VALVE. ONLY REDUCE PIPE SIZE AT VALVE
2. FOR RECLAIMED WATER USE PURPLE VALVE BOX COVER, PIPE, ET. AL.
3. INCLUDE ADDITIONAL EXTENSION AS NEEDED, SAME BRAND AS VALVE BOX

N.T.S.

REMOTE CONTROL VALVE

1-2

DATE: 08/12/24