



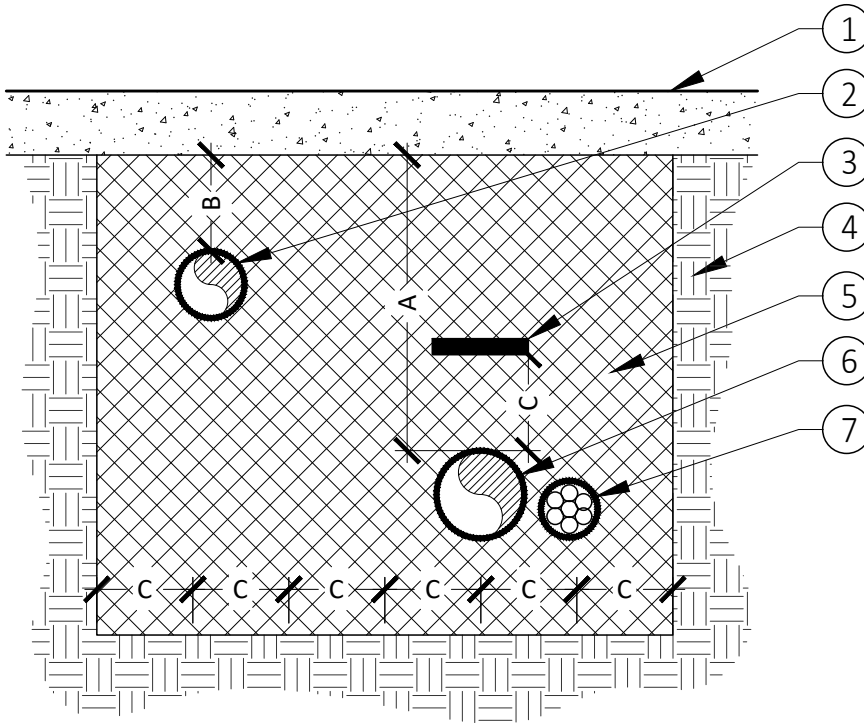
CITY OF PERRIS

DEVELOPMENT SERVICES DEPARTMENT PLANNING DIVISION

135 NORTH D STREET, PERRIS, CA 92570-2200
(951) 943-5003

LEGEND:

- ① FINISH GRADE
- ② LATERAL LINES, SEE SPECS
- ③ 3" WIDE I.D. TAPE, SEE SPECS FOR TYPE
- ④ UNDISTURBED NATIVE SOIL
- ⑤ CLEAN BACKFILL - 90% COMPACTION REQUIRED, SEE SPECS
- ⑥ PRESSURE MAINLINE
- ⑦ CONTROL WIRE



| DIMENSION | A | B | C |
|---------------|-----|-----|----|
| 1/2" - 2 1/2" | 18" | 12" | 6" |
| 3" - 4" | 24" | X | 6" |
| 6" | 36" | X | 6" |

NOTES:

1. ALL PIPE UNDER PAVING SHALL BE INSTALLED IN A PURPLE PVC CL 200 SLEEVE TWICE THE DIAMETER OF THE CARRIER PIPE AND LOCATED AT A DEPTH OF 36" TO TOP OF SLEEVE.

N.T.S.

TRENCHING

I-13

DATE: 08/12/24