



Technical Memorandum

To: Habib Motlagh, City of Perris
 From: Marc Mizuta, Mizuta Traffic Consulting
 Date: October 19, 2023
 Re: Traffic Analysis for the Proposed Chevron Alternative Fueling Project

Mizuta Traffic Consulting (MTC) has prepared this memo evaluating how the proposed project could affect the current traffic in the area. The project is located at 4063 N Webster Avenue in the City of Perris. The Project would consist of demolishing the existing building on site and constructing two hydrogen dispensers with a canopy and a new fuel canopy with three islands for Compressed Natural Gas (CNG) and biodiesel dispensers. Additionally, the existing driveway located to the south of the Project would be widened to accommodate larger trucks/vehicles and connect the existing Chevron gas station with the Project.

ALTERNATIVE FUELING TRENDS

The Project consists of adding alternative fueling dispensers only with canopies. According to the United States Department of Transportation, there are more than 70,000 alternative fueling stations across the country as of April 2023. This is up nearly 90 percent as there were fewer than 40,000 stations across the county in April 2020. Most of the increase is attributed to electric vehicle (EV) charging stations, which account for approximately 84 percent of all alternative fueling stations.

In southern California, there are currently 149 alternative fueling stations consisting of hydrogen, biodiesel, and CNG, which represent approximately 64 percent of all alternative fueling stations in California. It should be noted that in Perris, there are only two alternative fueling stations.

Table 1: Alternative Fueling Stations

Station Fuel Type	Quantity ¹		%
	So Cal ²	CA	
Hydrogen	31	56	55%
Biodiesel	13	35	37%
CNG	105	143	73%
ALT FUEL TOTALS	149	234	64%

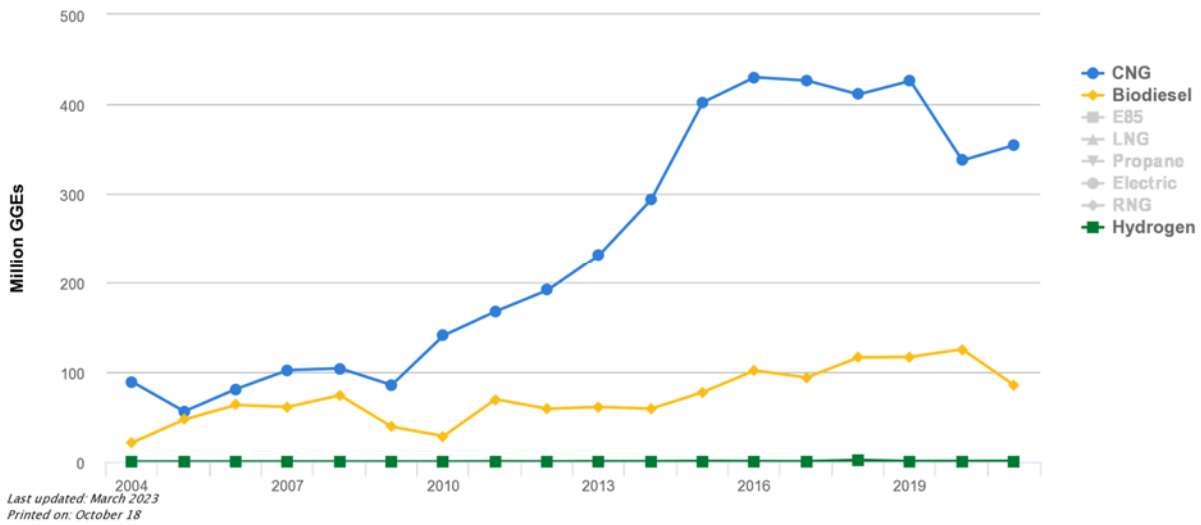
Notes:

1. All data provided by the US Department of Energy, Energy Efficiency & Renewable Energy website (<https://afdc.energy.gov/stations/#/analyze>)
2. Includes all stations located in San Luis Obispo, Kern, Santa Barbara, Ventura, Los Angeles, San Bernardino, Riverside, Orange, San Diego, and Imperial Counties.



The energy use impact is a metric that measures the quantity of conventional fuel that was shifted to clean, domestic, economical sources, such as alternative fuels, or saved through efficiency improvements. The energy use impact is measured in gasoline gallon equivalents (GGEs), which represents a quantity of fuel with the same amount of energy contained in a gallon of gasoline. The trend for alternative fuels such as CNG and biodiesel has been generally increasing over the last 20 years. The hydrogen alternative fuel has remained relatively flat. Figure 1 summarizes the energy use impact by alternative fuel vehicle type.

Figure 1: Energy Use Impact by Alternative Fuel Vehicle Type

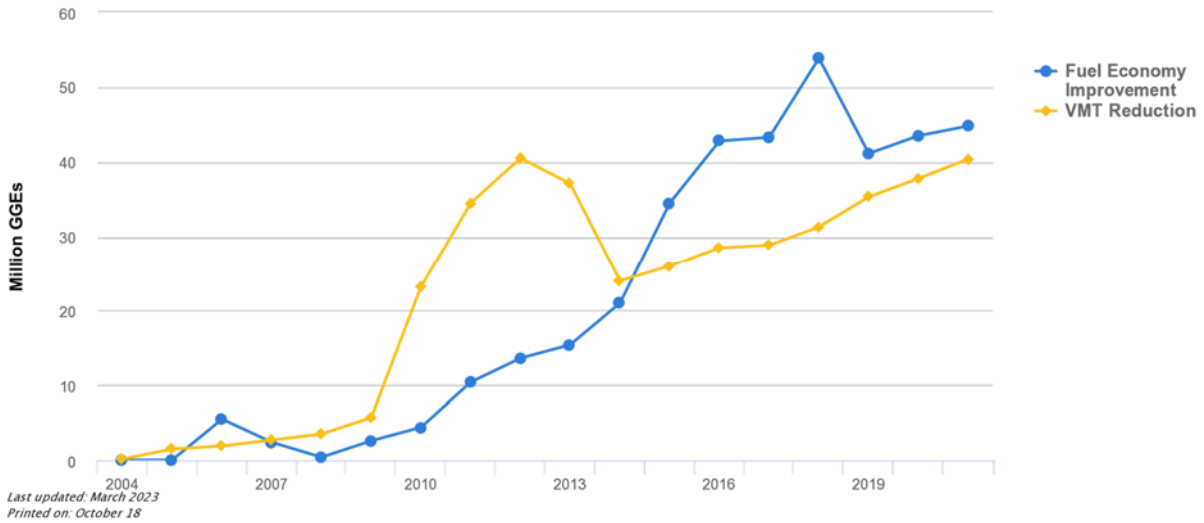


Source: Clean Cities coalitions annual activity report



Additionally, as more vehicles come online that use alternative fuels, the fuel economy improvement increases as well as the vehicle-miles traveled (VMT) reductions. The VMT reductions are consistent with the goals set forth in Senate Bill 743 (SB 743).

Figure 2: Energy Use Impact by VMT Reduction



Source: Clean Cities coalitions annual activity report

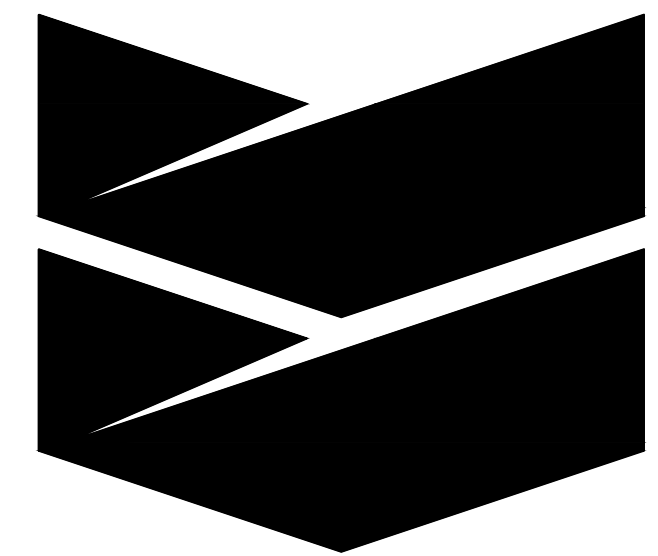
CONCLUSION

As more vehicles transition to alternative fuel consumption, there will be less demand for standard gasoline consumption. It would be expected that there would be no net increase in traffic volumes. As such, no additional traffic analysis is required or recommended.

ATTACHMENTS

- Site Plan
- Supporting Data

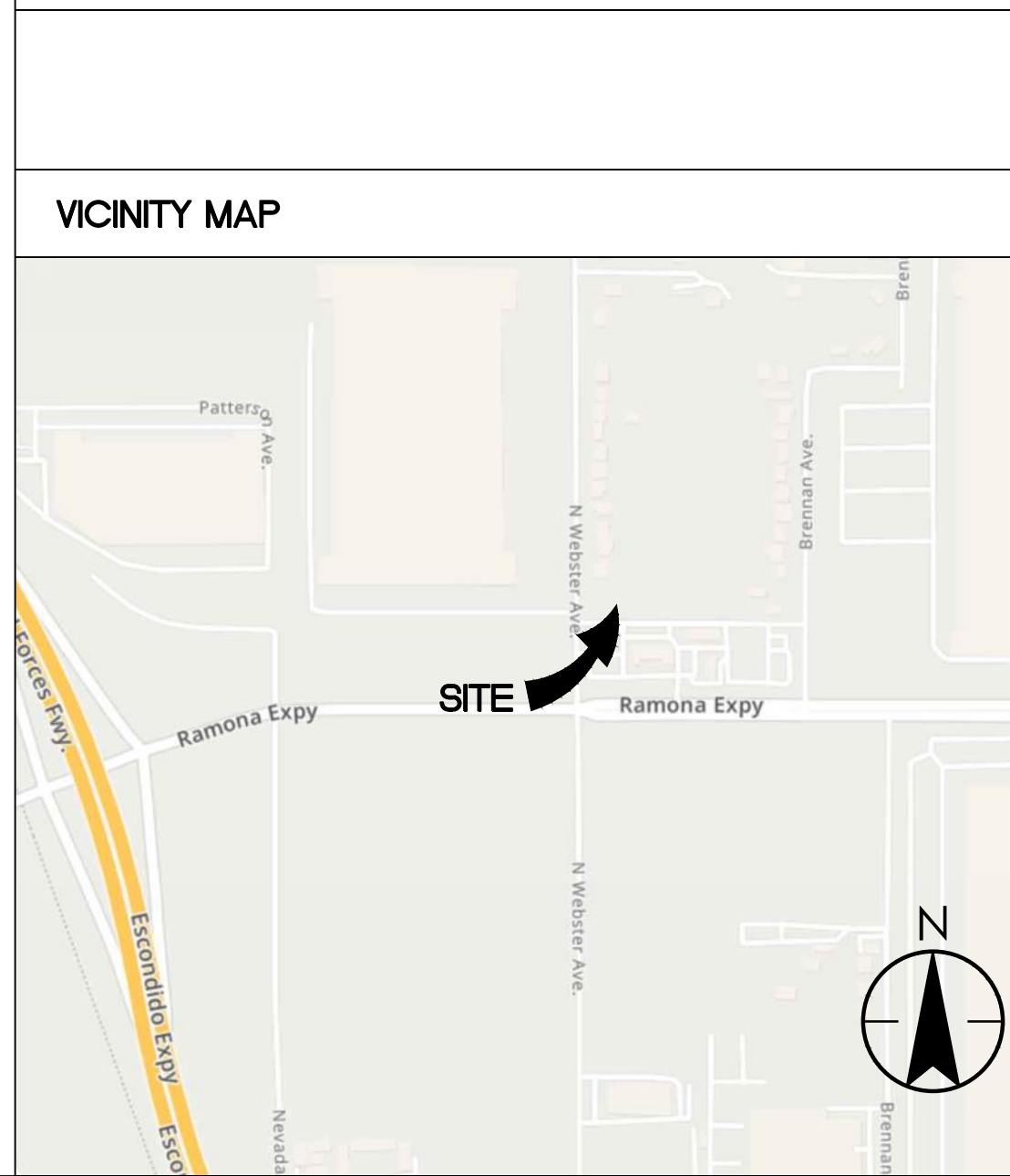
ABBREVIATIONS	
& = AND	IE = INVERT ELEVATION
∠ = ANGLE	I.D. = INSIDE DIAMETER
⊙ = AT	INSUL. = INSULATION
— = CENTERLINE	INT. = INTERIOR
⊘ = DIAMETER OF ROUND	JT. = JOINT
# = POUND OR NUMBER	LAM. = LAMINATE
(E) = EXISTING	LAV. = LAVATORY
(R) = RELOCATED	LIP = EDGE OF SWALE OR GUTTER
(N) = NEW	
A.B. = ANCHOR BOLT	MAX. = MAXIMUM
A.F.F. = ABOVE FINISH FLOOR	MECH. = MECHANICAL
AGGR. = AGGREGATE	MEMB. = MEMBRANE
AL. = ALUMINUM	MFR. = MANUFACTURER
APPROX. = APPROXIMATE	MIN. = MINIMUM
ARCH. = ARCHITECTURAL	MISC. = MISCELLANEOUS
ASPH. = ASPHALT	M.O. = MASONRY OPENING
	MTD. = MOUNTED
	MUL. = MULLION
BD. = BOARD	N. = NORTH
BITUM. = BITUMINOUS	N.I.C. = NOT IN CONTRACT
BLDG. = BUILDING	NO. OR # = NUMBER
BLKG. = BLOCKING	NOM. = NOMINAL
BM. = BEAM	N.T.S. = NOT TO SCALE
B.O. = BOTTOM OF	
BOT. = BOTTOM	
BW = BACK OF WALK	
	O.C. = ON CENTER
CAB. = CABINET	O.D. = OUTSIDE DIAMETER
CEM. = CEMENT	OPNG. = OPENING
CER. = CERAMIC	OPP. = OPPOSITE
C.I. = CAST IRON	
CL. = CEILING	PB = LEVEL PAVEMENT AT DISPENSER PIT BOX
CLR./CL. = CLEAR	PL. = PLATE
COL. = COLUMN	PLAM. = PLASTIC LAMINATE
CONC. = CONCRETE	PLYWD. = PLYWOOD
CONSTR. = CONSTRUCTION	P.O.C. = POINT OF CURVATURE
CONT. = CONTINUOUS	P.O.S. = POINT OF SALE
CTSK. = COUNTERSUNK	R OR RAD. = RADIUS
CNTR. = COUNTER	R.D. = ROOF DRAIN
	REF. = REFERENCE
DEPT. = DEPARTMENT	REINF. = REINFORCED
DET. = DETAIL	REQ'D = REQUIRED
DIA. = DIAMETER	RM. = ROOM
DM. = DIMENSION	R.O. = ROUGH OPENING
DISP. = DISPENSER	R.O.W. = RIGHT OF WAY
DN. = DOWN	SAD = SEE ARCHITECTURAL DRAWINGS
DR. = DOOR	SCHED. = SCHEDULE
D.S. = DOWNSPOUT	SECT. = SECTION
DWG. = DRAWING	SH. = SHEET
	SIM. = SIMILAR
E = EAST	SPEC. = SPECIFICATION
EA. = EACH	SQ. = SQUARE
EL. = ELEVATION	SSD = SEE STRUCTURAL DRAWINGS
ELEC. = ELECTRICAL	S.ST. = STAINLESS STEEL
EQ. = EQUAL	STD. = STANDARD
EXP. = EXPANSION	STL. = STEEL
EXT. = EXTERIOR	STOR. = STORAGE
FE = FIRE EXTINGUISHER	STR. = STRUCTURAL
FF = FLOOR FINISH	SYM. = SYMMETRICAL
FDN. = FOUNDATION	T.C. = TOP OF CURB
FG = FINISH GRADE	T.F.S. = TOP OF FINISHED SLAB
FIN. = FINISH	TG = TOP OF GRATE
FL. = FLOOR	T.& G. = TONGUE & GROOVE
FLASH'G = FLASHING	THK. = THICK
FLUOR. = FLUORESCENT	TI = TOP OF ISLAND
F.O. = FACE OF	T.O. = TOP OF
F.O.C. = FACE OF CONCRETE	TOW = TOP OF WALL
F.O.F. = FACE OF FINISH	TP = TOP OF PAVEMENT
F.O.S. = FACE OF STUDS	TS = TOP OF SLAB
F.R.P. = FIBERGLASS REINFORCED PANEL	TW = TOP OF WALK
F.S. = FLOOR SINK	TYP. = TYPICAL
FT. = FOOT OR FEET	UNF. = UNFINISHED
FTG. = FOOTING	U.O.N. = UNLESS OTHERWISE NOTED
FURR. = FURRING	
FUT. = FUTURE	VERT = VERTICAL
	W. = WEST
G.A. = GAUGE	W/ = WITH
GALV. = GALVANIZED	W.C. = WATER CLOSET
CL. = GLASS	WD. = WOOD
GR. = GRADE	W/O = WITHOUT
GB = GRADE BREAK	WP. = WATERPROOF
CSM = GALVANIZED SHEET METAL	WSGT. = WAINSCOT
CYP. = GYPSUM	WT. = WEIGHT
GYP.BD. = GYPSUM BOARD	
H.B. = HOSE BIBB	
HDWE. = HARDWARE	
H.M. = HOLLOW METAL	
HORIZ. = HORIZONTAL	
HR. = HOUR	
HGT. = HEIGHT	



Chevron

GENERAL NOTES
1. IN THE EVENT OF DISCREPANCIES BETWEEN THE DRAWINGS, SPECIFICATIONS, OR SCOPE OF WORK SUMMARY IN THIS PACKAGE, NOTIFY CHEVRON REP. IMMEDIATELY.
2. THE CONTRACTOR IS RESPONSIBLE TO SEE THAT WORK IN FIELD IS DONE IN ACCORDANCE WITH ALL CURRENT APPLICABLE NATIONAL, STATE & LOCAL CODES, ORDINANCES & REQUIREMENTS BY GOVERNING AGENCIES. WHETHER OR NOT SAID CODES, ORDINANCES, REQUIREMENTS, ETC. ARE SPECIFICALLY SHOWN ON DRAWINGS AND/OR CALLED FOR IN SPECIFICATIONS.
3. THE CONTRACTOR SHALL PROTECT ALL EXISTING ITEMS AND FACILITIES TO REMAIN THROUGHOUT CONSTRUCTION. CONTRACTOR SHALL REPAIR AND/OR REPLACE, AT CONTRACTOR'S EXPENSE, ANY EXISTING ITEMS AND FACILITIES TO REMAIN THAT ARE DAMAGED BY THE CONTRACTOR'S OPERATIONS, TO THE SATISFACTION OF THE CHEVRON REP.
4. UNLESS DELIVERY IS BY CHEVRON TO THE JOB SITE, CONTRACTOR SHALL DELIVER SUCH EQUIPMENT, DAMAGE-FREE TO THE JOB SITE.
5. PRIOR TO EXCAVATION, DETERMINE AND VERIFY LOCATION OF UTILITY SERVICES IN ALL AREAS TO BE EXCAVATED.
6. THE CONTRACTOR SHALL COMPLY WITH ALL PERTINENT LAWS, CODES, REGULATIONS, BUILDING CODES, GOVERNING AGENCIES & MANUFACTURER SPECIFICATIONS, UNLESS GREATER REQUIREMENTS ARE INDICATED, AND/OR ARE NECESSARY FOR THE SAFETY OF THE PROJECT.
7. THE CONTRACTOR SHALL BE RESPONSIBLE FOR NOTIFYING JURISDICTIONS AS REQUIRED FOR INSPECTIONS.
8. THE CONTRACTOR SHALL PROVIDE THE CHEVRON REPRESENTATIVE WITH A CONSTRUCTION SCHEDULE PRIOR TO STARTING THE WORK, A QUALIFIED JOB SUPERINTENDENT THROUGHOUT THE WORK, PHOTOS SHOWING PIPING AND ELECTRICAL TRENCHES PRIOR TO BACKFILL, AND RECORD DRAWINGS OF ALL UNDERGROUND CONSTRUCTION.
9. THE CONTRACTOR SHALL PROVIDE BARRICADES AND SAFETY SIGNS PER OSHA REQUIREMENTS.
10. THE CONTRACTOR IS RESPONSIBLE FOR OVERALL CONSTRUCTION SITE CLEANLINESS, INCLUDING PROVISION OF A DEBRIS BOX WITH WEEKLY SERVICING, REMOVAL OF ALL CONTRACTOR/SUBCONTRACTOR REFUSE AND DEBRIS, AND SWEEPING OF THE ENTIRE YARD AREA AT THE COMPLETION OF THE WORK.
11. UNLESS STATED OTHERWISE IN THE SCOPE OF WORK SUMMARY, ALL OTHER PROCEDURES, TESTING, MATERIALS AND EQUIPMENT SHOWN ON THE PLANS SHALL BE FURNISHED AND INSTALLED BY THE CONTRACTOR.
12. DRAWINGS SHOULD NOT BE SCALED. N.T.S. INDICATES "NOT TO SCALE" AND THE LISTED DIMENSION SHALL GOVERN.
13. EACH CONTRACTOR SHALL BE RESPONSIBLE FOR REPAIR OF DAMAGE TO THE WORK OF OTHER TRADES CAUSED BY HIS OPERATIONS. THE NATURE OF SUCH REPAIR WORK MUST RECEIVE THE PRIOR APPROVAL OF THE CHEVRON REP.
14. CONSTRUCTION MATERIAL, ASSEMBLIES AND PROCEDURES ARE TO LOCALLY ADOPTED BUILDING CODES AND SUPPLEMENTARY ORDINANCES. WHEN A CONFLICT OCCURS BETWEEN SUCH LOCAL CODE AND INFORMATION SHOWN ON THE PLANS, CONSULT CHEVRON REP. FOR RESOLUTION PRIOR TO COMMENCING WORK.
15. THE CONTRACTOR SHALL NOTIFY CHEVRON REP. IF SITE CONDITIONS OR DIMENSIONS DISAGREE WITH INFORMATION SHOWN ON THE DRAWINGS. WORK IS NOT TO PROCEED UNTIL SUCH DIFFERENCES ARE RESOLVED.
16. ALL EXISTING STRUCTURES, WALLS, TRIM, FASCIA, DOORS, DOWNSPOUTS, ETC., ARE TO BE REPAIRED AND REPAINTED AS NOTED.
17. SEPARATE CONTRACTS FOR SUCH WORK AS PAVING, LANDSCAPING, STEEL FABRICATOR, SHOP FABRICATED COMPONENTS, AND SIGN INSTALLATION MAY BE AWARDED BY CHEVRON. IN ADDITION CERTAIN SPECIALTY ITEMS SUCH AS LIGHTING FIXTURES, SWITCHGEAR, HYDROGEN STATION & STORAGE MODULES AND DISPENSERS, ETC. ARE PURCHASED DIRECTLY BY CHEVRON FOR DELIVERY TO THE CONTRACTOR, WHO WILL BE RESPONSIBLE FOR THEIR INSTALLATION. REFER TO THE SCOPE OF WORK FOR A LISTING OF SUCH CONTRACTS AND EQUIPMENT. THE CONTRACTOR SHALL COOPERATE WITH AND COORDINATE THE WORK OF SEPARATE CONTRACTORS.
18. DO NOT USE THE BUILDING PERMIT SET FOR CONSTRUCTION OR FIELD REFERENCE. THE PERMIT SET GENERALLY LACKS CERTAIN DRAWINGS AND SPECIFICATIONS, WHICH ARE IN THE BID AND CONSTRUCTION SETS IN ADDITION TO REVISIONS MADE AFTER THE PERMIT PROCESS. FOR CONSTRUCTION AND FIELD REFERENCE, CONTRACTOR SHALL USE ONLY THE SET, WHICH IS CLEARLY SIGNED AND DATED "ISSUED FOR CONSTRUCTION". THE APPROVED PERMIT SET SHALL BE KEPT ON SITE AND REFERENCED FOR PROJECT SPECIFIC MARK-UPS AND/OR REQUIREMENTS WHICH MAY HAVE BEEN NOTED BY LOCAL AGENCIES DURING PLAN CHECK.
19. GENERAL CONTRACTOR TO SUBMIT FIRE SPRINKLER DRAWINGS, CALCULATIONS AND CUTSHEETS CONCURRENTLY TO THE COUNTY - DEPARTMENT OF BUILDING AND SAFETY AND THE COUNTY FIRE DEPARTMENT FOR REVIEW AND APPROVAL PRIOR TO FABRICATION AND INSTALLATION.

PROJECT DATA	
PROJECT ADDRESS: 4063 N WEBSTER AVE FERRIS, CA 92571	PHONE NUMBER
OWNER'S NAME: CHEVRON PRODUCTS CO. CARE OF RENEWABLES STATION OPERATIONS MANAGER	(925) 842-1682
OWNER'S ADDRESS: 6001 BOLLINGER CANYON RD. SAN RAMON, CA 94583	
SITE GROSS SQUARE FOOTAGE: 171,000 APPROX. SQ. FT. (3.90) APPROX. ACRES	
BUILDING SQUARE FOOTAGE: 4,500 APPROX. SQ. FT.	
ZONING DISTRICT: GENERAL COMMERCIAL (CG)	
NATURE OF BUSINESS: SELF SERVE GASOLINE SALES & CONVENIENCE STORE	
ASSESSOR'S PARCEL NO.: 302-260-053	
BUILDING CODES: 2019 CBC, 2019 CFC, 2019 CPC, 2019 CMC, 2019 CEC, CA ENERGY CODE (T-24), 2019 NFPA 55, CA OSG AND THEIR MOST CURRENT AMENDMENTS. THIS PROJECT HAS BEEN DESIGNED IN SUBSTANTIAL CONFORMANCE WITH THE ACCESSIBILITY PROVISIONS OF CHAPTER 11B OF THE CALIFORNIA BUILDING CODE, LOCAL JURISDICTION, AND THE AMERICAN'S WITH DISABILITIES ACT.	



PROJECT TEAM	
PROJECT MANAGER: WICUS POSTMA STANTEC SARASOTA, FL	(661) 333-3731
H2 FUEL DESIGN: GARY GRELLI STANTEC WALNUT CREEK, CA	(925) 627-4508
ELECTRICAL ENGINEER: MICHAEL COOPER STANTEC WASSILLA, AK	(907) 343-5286
CIVIL ENGINEER: KEVAN MCLAUGHLAN STANTEC IRVINE, CA	(949) 923-6141
LANDSCAPE ARCHITECT: MAISHA RUTH STANTEC PETALUMA, CA	(707) 658-4707
CHEVRON PROJECT MANAGER: SCOTT NOVAK 1500 LOUISIANA STREET HOUSTON, TX 77002	(510) 512-0182
PLANNING CONSULTANT: ERIC SNELLING STANTEC SANTA MARIA, CA	(805) 250-2857

PROJECT DESCRIPTION
CHEVRON IS PROPOSING THE FOLLOWING:
<ul style="list-style-type: none"> INSTALL NEW CNG COMPOUND WITH CONCRETE BLOCK WALL FOR SECURITY AND EQUIPMENT SPACING. INSTALL H2 TRUCK ACCESS TO NEW OFFLOADING AREA. NEW H2 EQUIPMENT COMPOUND WITH CONCRETE BLOCK WALL FOR SECURITY AND EQUIPMENT SPACING. INSTALL TWO H2 DISPENSERS WITH CANOPY AS SHOWN. INSTALL NEW ELECTRICAL SERVICE INSTALL NEW PAVING AT EXISTING NORTH LOT WIDEN EXISTING DRIVEWAY ENTRANCE ON THE WEST END OF PROPERTY. INSTALL NEW FUEL CANOPY WITH THREE ISLANDS FOR CNG AND DIESEL DISPENSERS

DRAWING INDEX	
SHT. #	TITLE
CS	COVER SHEET
GP1	PRELIMINARY GRADING PLAN
L1	PRELIMINARY LANDSCAPE PLAN
SP1	SITE PLAN
SP1.1	VEHICLE ACCESS PLAN
SD1	H2 ENCLOSURE PERSPECTIVE
SD2	H2 ENCLOSURE ELEVATIONS
SD3	CNG ENCLOSURE ELEVATIONS
CA1.1	H2 CANOPY ELEVATIONS
CA1.2	DIESEL & CNG CANOPY ELEVATIONS
XP1	EXISTING SITE PLAN

ISSUED FOR APPROVAL
02/21/23

LEGEND	
	DETAIL NUMBER SHEET NUMBER
	DETAIL NUMBER SHEET NUMBER
	DOOR NUMBER
	NOTE REFERENCE NUMBER
	KEY NOTE
	DETAIL NUMBER SHEET NUMBER

MILESTONES			
PROJECT PHASE	DATE	INITIALS	ISS#
ISSUED FOR PLANNING	--	--	
ISSUED FOR PERMIT	--	--	JOB# 2057297530
ISSUED FOR BID	--	--	
ISSUED FOR CONSTRUCTION	--	--	SCALE: AS NOTED

Chevron Products Company, a division of Chevron U.S.A. Inc., owns the copy rights to the design of the herein described "Extra Mile" market building as embodied in any tangible or electronic medium of expression including a building, architectural plans, or drawings. The copyrighted material includes the overall form as well as the arrangement and composition of spaces and elements in this "Extra Mile" design, but does not include individual standard features or details. Anyone wishes to copy, distribute, or sell this drawing or any derivative works based hereon must have written permission of Chevron Products Company.

©2008 Chevron Products Company, a division of Chevron U.S.A. Inc. All rights reserved.

MARK	DATE	REVISIONS	INITIAL	MARK	DATE	REVISIONS	INITIAL
△	02/21/23	ISSUED FOR APPROVAL	BSE	△			
△	11/23/22	ISSUED FOR REVIEW	BSE	△			

4063 N WEBSTER AVE
FERRIS, CA 92571
SERVICE STATION #

Chevron
Stantec Architecture Inc.
1803 Ironwood Drive, Suite 200
Petaluma, CA 94954
Tel: 707.761.1400
www.stantec.com

COVER SHEET

CS

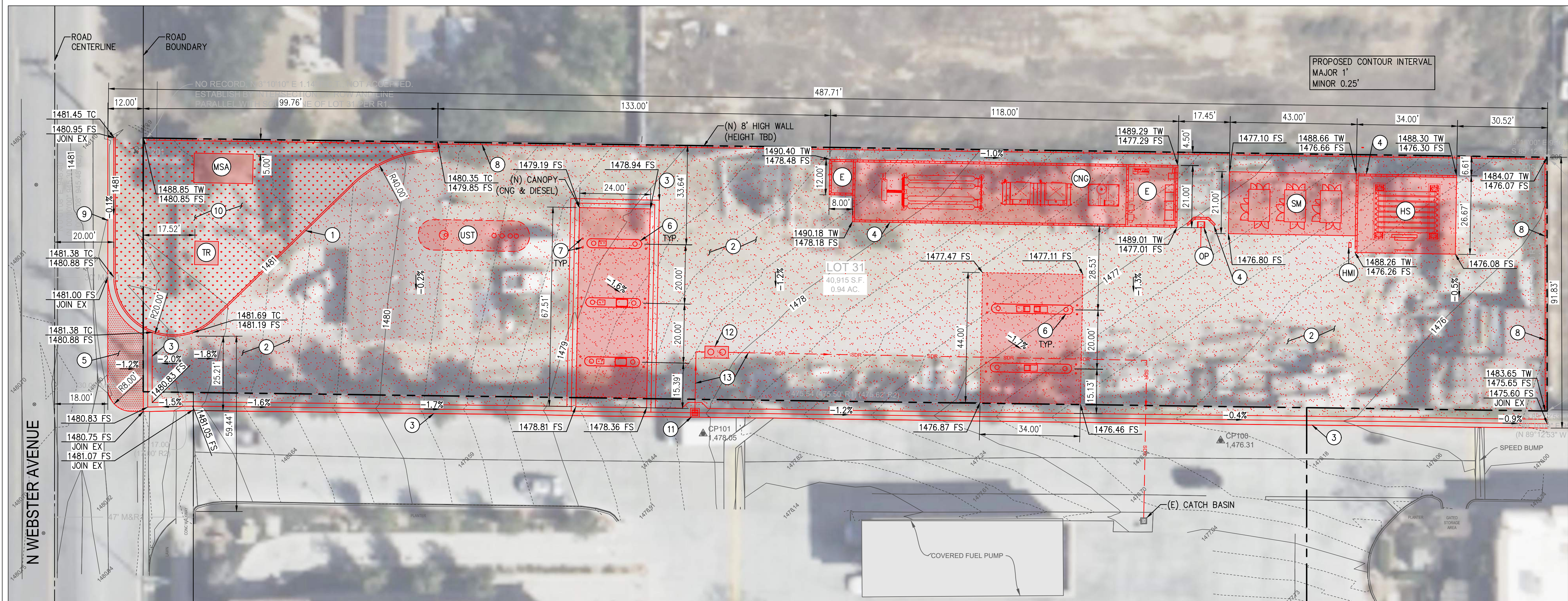
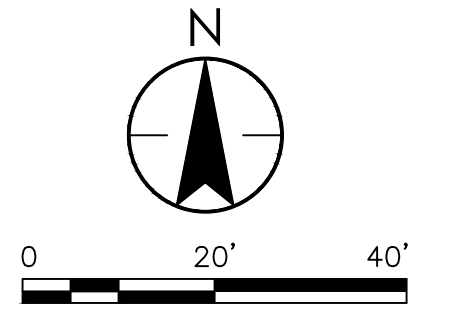


DEMOLITION PLAN
1"=20'

- DEMOLITION ITEMS**
- 1 DEMOLISH EXISTING BUILDING
 - 2 DEMOLISH EXISTING CONCRETE PAVEMENT
 - 3 DEMOLISH EXISTING BRICK PAVEMENT
 - 4 DEMOLISH EXISTING CONCRETE WALL
 - 5 DEMOLISH EXISTING AC PAVEMENT
 - 6 DEMOLISH EXISTING CURB/CURB AND GUTTER
 - 7 DEMOLISH EXISTING PLANTER
 - 8 REMOVE EXISTING TREE
 - 9 REMOVE ABOVE GROUND TANK
 - 10 REMOVE EXISTING COMMUNICATION VAULT
 - 11 REMOVE EXISTING MAIL BOX
 - 12 REMOVE EXISTING METAL GATE/FENCE
 - 13 DEMOLISH EXISTING WOODEN FENCE
 - 14 REMOVE/RELOCATE EXISTING UTILITY RISERS/VAULTS/BOXES/WATER METERS/VALVES/MANHOLES/CLEANOUTS
 - 15 REMOVE/RELOCATE EXISTING UTILITY POLES
 - 16 REMOVE BOLLARDS
 - 17 REMOVE EXISTING SIGNS
 - 18 CLEAR AND GRUB LANDSCAPE AREA

- GRADING CONSTRUCTION ITEMS**
- 1 CONSTRUCT CONCRETE CURB
 - 2 CONSTRUCT CONCRETE PAVEMENT
 - 3 CONSTRUCT 3" WIDE V-GUTTER
 - 4 CONSTRUCT CMU WALL
 - 5 CONSTRUCT AC DRIVEWAY
 - 6 CONSTRUCT FUEL DISPENSER ISLAND
 - 7 INSTALL BOLLARDS
 - 8 CONSTRUCT CMU COMPOUND WALL
 - 9 CONSTRUCT CONCRETE CURB AND GUTTER
 - 10 LANDSCAPING ADJUSTMENT AS REQUIRED
 - 11 INSTALL CATCH BASIN
 - 12 INSTALL SAND OIL INTERCEPTOR
 - 13 INSTALL STORM DRAIN PIPE

ISSUED FOR APPROVAL
03/31/23



GRADING PLAN
1"=20'

DEMOLITION AND GRADING LEGEND

X.XX FS	DESIGNED FINISHED SURFACE ELEVATIONS	(HS)	(N) HYDROGEN STORAGE UNIT
X.XX TW	TOP OF WALL ELEVATION	(E)	(N) ELECTRICAL EQUIPMENT
X.XX TC	TOP OF CURB ELEVATION	(SM)	(N) STATION MODULE
[Pattern]	DEMOLITION AREA	(TR)	(N) TRANSFORMER
[Pattern]	(N) STRUCTURES	(CNG)	(N) CNG EQUIPMENT AREA
[Pattern]	(N) ENCLOSURE CMU WALL	(HMI)	(N) HMI UNIT
[Pattern]	(E) LANDSCAPE	(OP)	(N) OFFLOAD PANEL
[Pattern]	(E) CONCRETE	(MSA)	(N) GAS MSA UNIT
[Pattern]	(E) BRICK PAVING	(MSA)	(N) UNDERGROUND DIESEL STORAGE TANK
[Pattern]	LANDSCAPING ADJUSTMENT		
[Pattern]	(N) CONCRETE		
[Pattern]	PROPERTY BOUNDARY		
[Pattern]	(N) STORM DRAIN PIPE		

Chevron Products Company, a division of Chevron U.S.A. Inc., owns the copy rights to the design of the herein described "Extra Mile" market building as embodied in any tangible or electronic medium of expression including a building, architectural plans, or drawings. The copyrighted material includes the overall form as well as the arrangement and composition of spaces and elements in this "Extra Mile" design, but does not include individual standard features or details. Anyone wishes to copy, distribute, or sell this drawing or any derivative works based hereon must have written permission of Chevron Products Company.
©2008 Chevron Products Company, a division of Chevron U.S.A. Inc. All rights reserved.

MARK	DATE	REVISIONS	INITIAL	MARK	DATE	REVISIONS	INITIAL
▲	03/31/23	ADDED DIESEL ELECTRICAL BLDG.	JAB	▲			
▲	02/21/23	ISSUED FOR APPROVAL	BSE	▲			

Chevron
4063 N WEBSTER AVE
PERRIS, CA 92571
SERVICE STATION #

Stantec
Stantec Architecture Inc.
180 North Woodwell Street, Suite 200
Perris, CA 92571
Tel: 707.943.1600
www.stantec.com

PRELIMINARY GRADING PLAN

PROJECT PHASE	DATE	INITIALS	SS#	SHEET
ISSUED FOR PLANNING	-	-	-	GP1
ISSUED FOR PERMIT	-	-	-	
ISSUED FOR BID	-	-	-	
ISSUED FOR CONSTRUCTION	-	-	-	

SCALE: AS NOTED

Fuel Type Code	Station Name	City	State	ZIP
BD	G&M	Reseda	CA	91335
BD	Chevron G&M #73	Burbank	CA	91502
BD	Ontario CNG - 76	Ontario	CA	91761
BD	Chevron	Diamond Bar	CA	91765
BD	Pearson Fuels Depot	San Diego	CA	92105
BD	G&M Chevron #174	San Diego	CA	92111
BD	Love's Travel Stop #749	Westmorland	CA	92281
BD	Love's Travel Stop	Barstow	CA	92311
BD	76 - Circle K	March Air Reserve Base	CA	92518
BD	Downs Energy	Corona	CA	92879
BD	Pearson Fuels - Silvas Oil Co Inc	Ventura	CA	93003
BD	Love's Travel Stop #230	Lost Hills	CA	93249
BD	Love's Travel Stop	Tulare	CA	93274
BD	Love's Travel Stop #755	Boron	CA	93516
BD	Love's Travel Stop #392	Tehachapi	CA	93561
BD	Love's Travel Stop - Madera	Madera	CA	93637
BD	Love's Travel Stop	Madera	CA	93638
BD	Dogpatch Biofuels	San Francisco	CA	94107
BD	National Petroleum	Newark	CA	94560
BD	BioFuel Oasis	Berkeley	CA	94702
BD	Love's Travel Stop #	Lodi	CA	95242
BD	Love's Travel Stop #441	Santa Nella	CA	95322
BD	Love's Travel Stop #233	Ripon	CA	95366
BD	Renner Petroleum - Cloverdale	Cloverdale	CA	95425
BD	Renner Petroleum	Eureka	CA	95501
BD	Renner Petroleum	McKinleyville	CA	95519
BD	Renner Petroleum	Arcata	CA	95521
BD	Renner Petroleum	Fortuna	CA	95540
BD	Renner Petroleum	Garberville	CA	95542
BD	Renner Petroleum	Rio Dell	CA	95562
BD	Pacific Pride - Interstate Oil Co	West Sacramento	CA	95691
BD	Interstate Oil Co	Woodland	CA	95695
BD	Love's Travel Stop #652	Williams	CA	95987
BD	99 Travel Center	Yuba City	CA	95991
BD	Love's Travel Stop #410	Corning	CA	96021
CNG	Speedy Fuel	Los Angeles	CA	90023
CNG	Clean Energy - La Cienega	Los Angeles	CA	90035
CNG	Clean Energy - City of Commerce	Commerce	CA	90040
CNG	Clean Energy - Los Angeles International Airport	Los Angeles	CA	90045
CNG	SoCalGas - Compton Base	Compton	CA	90221
CNG	GAIN Clean Fuel - Compton	Compton	CA	90222
CNG	SoCalGas - Energy Resource Center	Downey	CA	90241
CNG	Clean Energy - Aviation CNG	Inglewood	CA	90301
CNG	GAIN Clean Fuel - Inglewood	Inglewood	CA	90304
CNG	Clean Energy - Santa Monica SoCal Gas	Santa Monica	CA	90404
CNG	Clean Energy - City of Torrance	Torrance	CA	90503
CNG	Clean Energy - Los Angeles County Sanitation District	Whittier	CA	90601
CNG	Whittier Union High School District	Whittier	CA	90602
CNG	EDCO Disposal - Buena Park	Buena Park	CA	90621
CNG	Fullerton Joint Union High School District	La Habra	CA	90631
CNG	Chevron	Montebello	CA	90640
CNG	SoCalGas - Pico Rivera Base	Pico Rivera	CA	90660
CNG	SoCalGas - San Pedro Base	Los Angeles	CA	90731
CNG	Clean Energy - Port of Long Beach	Wilmington	CA	90744
CNG	Clean Energy - Los Angeles Sanitation District	Carson	CA	90745
CNG	Clean Energy - Long Beach Gas and Oil Department	Long Beach	CA	90755
CNG	Clean Energy - Southern Counties Express	Carson	CA	90810
CNG	Clean Energy - Arcadia Foothill Transit	Irwindale	CA	91006
CNG	Clean Energy - Pasadena - Southern California Gas Co Base	Pasadena	CA	91107
CNG	Clean Energy - City of Glendale	Glendale	CA	91204
CNG	Clean Energy - Canoga Park	Canoga Park	CA	91304
CNG	Clean Energy - Los Angeles County Metropolitan Transportation Authority - Division 8	Chatsworth	CA	91311
CNG	Trillium - City of Thousand Oaks	Thousand Oaks	CA	91320
CNG	SoCalGas - Branford Base	Pacoima	CA	91331
CNG	City of San Fernando	San Fernando	CA	91340
CNG	Clean Energy - City of Santa Clarita	Santa Clarita	CA	91355
CNG	SoCalGas - Van Nuys Base	Los Angeles	CA	91406

CNG	Clean Energy - City of Burbank	Burbank	CA	91502
CNG	SoCalGas - Azusa Base	Azusa	CA	91702
CNG	Clean N' Green	Chino	CA	91710
CNG	City of Covina - City Corporate Yard	Covina	CA	91723
CNG	Valley Vista Services	City of Industry	CA	91748
CNG	City of Ontario - City Yard	Ontario	CA	91761
CNG	United Parcel Service	Ontario	CA	91761
CNG	Clean Energy - Ontario International Airport	Ontario	CA	91761
CNG	Ontario CNG - 76	Ontario	CA	91761
CNG	Clean Energy - Pomona Foothill Transit	Pomona	CA	91766
CNG	Chula Vista Education Center	Chula Vista	CA	91910
CNG	San Diego Gas and Electric - Carlsbad	Carlsbad	CA	92008
CNG	Poway Unified School District	Poway	CA	92064
CNG	University of California San Diego	La Jolla	CA	92093
CNG	Clean Energy - San Diego Airport - India Shell	San Diego	CA	92103
CNG	San Diego Gas and Electric Service Center - Miramar Yard	San Diego	CA	92121
CNG	SunLine Transit Agency	Indio	CA	92201
CNG	City of Blythe - Palo Verde Valley Transit	Blythe	CA	92225
CNG	Clean Energy - ARCO Cathedral City	Cathedral City	CA	92234
CNG	Clean Energy - Desert Hot Springs Mission Springs Water District	Desert Hot Springs	CA	92240
CNG	Sapphire Gas Solutions	El Centro	CA	92243
CNG	Clean Energy - Morongo Basin Transit Authority	Joshua Tree	CA	92252
CNG	Clean Energy - Palm Desert Burrtec Waste	Palm Desert	CA	92260
CNG	Clean Energy - Palm Springs International Airport	Palm Springs	CA	92262
CNG	Sapphire Gas Solutions	Palm Springs	CA	92262
CNG	Clean Energy - Yucca Valley - Park n Ride Transit Facility	Yucca Valley	CA	92284
CNG	Victor Valley Transit Authority	Barstow	CA	92311
CNG	Clean Energy - Fontana Truck Stop	Fontana	CA	92335
CNG	SoCalGas - Fontana Base	Fontana	CA	92335
CNG	Beyond6	Fontana	CA	92337
CNG	City of Redlands	Redlands	CA	92373
CNG	Rialto Unified School District	Rialto	CA	92376
CNG	City of Victorville	Victorville	CA	92392
CNG	City of San Bernardino	San Bernardino	CA	92408
CNG	City of Riverside	Riverside	CA	92504
CNG	SoCalGas - Riverside Base	Riverside	CA	92507
CNG	Clean Energy - Riverside County Waste Management	Riverside	CA	92509
CNG	Clean Energy - Waste Management - Moreno Valley	Moreno Valley	CA	92551
CNG	Movo Hydroco	Moreno Valley	CA	92557
CNG	SoCalGas - Murrieta	Murrieta	CA	92562
CNG	SoCalGas - Romoland	Perris	CA	92570
CNG	Clean Energy - Cajalco Expressway	Perris	CA	92570
CNG	Clean Energy - Irvine City Yard	Irvine	CA	92618
CNG	Republic Services - Rainbow Disposal	Huntington Beach	CA	92647
CNG	Clean Energy - Newport Beach	Newport Beach	CA	92663
CNG	Clean Energy - San Juan Capistrano - Stewart Family Inc - Shell	San Juan Capistrano	CA	92675
CNG	GAIN Clean Fuel - Santa Ana	Santa Ana	CA	92701
CNG	Clean N' Green	Santa Ana	CA	92705
CNG	Clean Energy - Santa Ana - SoCal Gas Base	Santa Ana	CA	92707
CNG	Fountain Valley - Orange County Sanitation District	Fountain Valley	CA	92708
CNG	Clean Energy - Anaheim - Valero Station	Anaheim	CA	92802
CNG	Trillium - Southern California Gas Co	Anaheim	CA	92806
CNG	Trillium - City of Placentia Corporate Yard	Placentia	CA	92806
CNG	SoCalGas - Garden Grove Base	Garden Grove	CA	92841
CNG	Clean Energy - 21st Century Oil - Garden Grove	Garden Grove	CA	92843
CNG	Clean Energy - Orange County Public Works	Orange	CA	92867
CNG	City of Corona	Corona	CA	92880
CNG	SoCalGas - Oxnard Base	Oxnard	CA	93030
CNG	SoCalGas - Santa Barbara Base	Santa Barbara	CA	93103
CNG	Beyond6	Buttonwillow	CA	93206
CNG	City of Delano	Delano	CA	93215
CNG	Chevron CNG 386887/Valley Pacific	Visalia	CA	93227
CNG	Lemoore Area School District	Lemoore	CA	93245
CNG	Love's Travel Stop #230	Lost Hills	CA	93249
CNG	Chevron	Lost Hills	CA	93249
CNG	Clean Energy - City of Tulare	Tulare	CA	93274
CNG	Trillium	Tulare	CA	93274
CNG	Kruse Western Renewable Fuels	Goshen	CA	93277

CNG	Trillium - City of Visalia	Visalia	CA	93292
CNG	Kern County Superintendent of Schools	Bakersfield	CA	93307
CNG	SoCalGas - Bakersfield Base	Bakersfield	CA	93308
CNG	Lompoc Unified School District	Lompoc	CA	93436
CNG	3G CNG	Paso Robles	CA	93446
CNG	Clean N' Green	Santa Maria	CA	93455
CNG	SoCalGas - Lancaster Base	Lancaster	CA	93535
CNG	Love's Travel Stop #392	Tehachapi	CA	93561
CNG	Tesei Petroleum	Madera	CA	93637
CNG	Kings Canyon Unified School District	Reedley	CA	93654
CNG	United Parcel Service	Fresno	CA	93728
CNG	PG&E - Salinas Service Center	Salinas	CA	93901
CNG	PG&E - Martin Service Center	Daly City	CA	94014
CNG	Trillium - San Francisco Airport	Millbrae	CA	94030
CNG	PG&E - San Carlos Service Center	San Carlos	CA	94070
CNG	Clean Energy - San Francisco Airport	San Francisco	CA	94128
CNG	PG&E - Concord Service Center	Concord	CA	94518
CNG	Trillium - Mount Diablo Unified School District	Concord	CA	94520
CNG	Clean Energy - Napa Petroleum	Napa	CA	94558
CNG	Allied Clean Fuels Plaza	Napa	CA	94558
CNG	Clean Energy - Port of Oakland	Oakland	CA	94607
CNG	Clean Energy - Oakland International Airport	Oakland	CA	94621
CNG	Clean Energy - San Leandro	Oakland	CA	94621
CNG	Trillium - City of Berkeley	Berkeley	CA	94710
CNG	PG&E - Richmond Service Center	Richmond	CA	94804
CNG	PG&E - Cupertino Service Center	Cupertino	CA	95014
CNG	PG&E - Santa Cruz Service Center	Santa Cruz	CA	95062
CNG	Clean Energy - ReFuel San Jose	San Jose	CA	95112
CNG	Trillium - San Jose Junction	San Clara	CA	95131
CNG	Clean Energy - Lathrop Food Express Inc	Lathrop	CA	95330
CNG	Beyond6	Modesto	CA	95357
CNG	City of Ripon	Ripon	CA	95366
CNG	PG&E - Auburn Service Center	Auburn	CA	95603
CNG	PG&E - Davis Service Center	Davis	CA	95616
CNG	Clean Energy - City of Elk Grove eTran	Elk Grove	CA	95624
CNG	PG&E - Vacaville Service Center	Vacaville	CA	95687
CNG	Clean Energy - West Sacramento	West Sacramento	CA	95691
CNG	United Parcel Service	West Sacramento	CA	95691
CNG	PG&E - Florin-Perkins Service Center	Sacramento	CA	95826
CNG	ReFuel Sacramento	Sacramento	CA	95826
CNG	PG&E - Marysville Service Center	Marysville	CA	95901
CNG	PG&E - Chico Service Center	Chico	CA	95928
CNG	PG&E - Grass Valley Service Center	Grass Valley	CA	95949
HY	True Zero - Hollywood Blvd	Los Angeles	CA	90028
HY	Air Products and Chemicals Inc - Los Angeles	Los Angeles	CA	90036
HY	True Zero - Lincoln Blvd	Los Angeles	CA	90045
HY	Air Products and Chemicals Inc - Santa Monica	Santa Monica	CA	90404
HY	Shell - Torrance	Torrance	CA	90504
HY	Iwatani - Hawaiian Gardens	Hawaiian Gardens	CA	90716
HY	Iwatani - Seal Beach	Seal Beach	CA	90740
HY	True Zero - Long Beach	Long Beach	CA	90807
HY	True Zero - La Canada Flintridge	La Canada Flintridge	CA	91011
HY	True Zero - South Pasadena	South Pasadena	CA	91030
HY	True Zero - Pasadena	Pasadena	CA	91106
HY	True Zero - Mission Hills	Mission Hills	CA	91345
HY	True Zero - Thousand Oaks	Thousand Oaks	CA	91362
HY	Air Products and Chemicals Inc - Woodland Hills	Woodland Hills	CA	91364
HY	True Zero - Sherman Oaks	Sherman Oaks	CA	91423
HY	True Zero - Burbank	Burbank	CA	91505
HY	True Zero - Studio City	Studio City	CA	91604
HY	True Zero - Baldwin Park	Baldwin Park	CA	91706
HY	South Coast Air Quality Management District - Diamond Bar	Diamond Bar	CA	91765
HY	True Zero - Del Mar	San Diego	CA	92130
HY	University of California Irvine	Irvine	CA	92612
HY	True Zero - Costa Mesa - Bristol St	Costa Mesa	CA	92626
HY	True Zero - Costa Mesa - Harbor Blvd	Costa Mesa	CA	92627
HY	True Zero - Lake Forest	Lake Forest	CA	92630
HY	True Zero - Aliso Viejo	Aliso Viejo	CA	92656

HY	Iwatani - San Juan Capistrano	San Juan Capistrano	CA	92675
HY	True Zero - Fountain Valley	Fountain Valley	CA	92708
HY	True Zero - Orange	Orange	CA	92866
HY	True Zero - Placentia	Placentia	CA	92870
HY	True Zero - Santa Barbara	Santa Barbara	CA	93105
HY	True Zero - Harris Ranch	Coalinga	CA	93210
HY	True Zero - South San Francisco	South San Francisco	CA	94080
HY	True Zero - Sunnyvale	Sunnyvale	CA	94087
HY	Shell - San Francisco Harrison St	San Francisco	CA	94103
HY	Shell - San Francisco 3rd St	San Francisco	CA	94107
HY	Shell - San Francisco Mission St	San Francisco	CA	94110
HY	True Zero - Concord	Concord	CA	94523
HY	True Zero - Fremont	Fremont	CA	94538
HY	True Zero - Hayward	Hayward	CA	94541
HY	Iwatani - San Ramon	San Ramon	CA	94583
HY	Messer - Emeryville	Emeryville	CA	94608
HY	True Zero - Oakland	Oakland	CA	94610
HY	Shell - Berkeley	Berkeley	CA	94702
HY	True Zero - Mill Valley	Mill Valley	CA	94941
HY	True Zero - Campbell - Winchester	Campbell	CA	95008
HY	True Zero - Campbell - East Hamilton Ave	Campbell	CA	95008
HY	True Zero - Cupertino	Cupertino	CA	95014
HY	True Zero - Saratoga	Saratoga	CA	95070
HY	Shell - San Jose	San Jose	CA	95119
HY	True Zero - San Jose - N First St	San Jose	CA	95131
HY	True Zero - San Jose - Snell Ave	San Jose	CA	95136
HY	Shell - Citrus Heights	Citrus Heights	CA	95621
HY	Ramos Oil Co - Iwatani - Shell	West Sacramento	CA	95691
HY	Shell - Sacramento	Sacramento	CA	95820
HY	Shell - Sacramento	Sacramento	CA	95864
HY	True Zero - Truckee	Truckee	CA	96161