



EVERGREEN SCREEN TREE PINUS ELIARICA
 EVERGREEN SCREEN TREE TRISTANIA CONFERTA
 STOREFRONT ACCENT TREE CERCIUS 'FOREST PANSY'
 DANIEA WAY
 MAJOR 'A' MAJOR 'B' MAJOR 'C' MAJOR 'D' MAJOR 'E' MAJOR 'F' MAJOR 'G' MAJOR 'H' MAJOR 'J' MAJOR 'K'
 OFFSITE PLANTING. REFER TO MASTER DEVELOPER LANDSCAPE PLANS FOR OFFSITE IMPROVEMENTS, TYP.
 ENTRY ACCENT TREE OLEA EUROPAEA 'WILSONII'
 N. PERRIS BLVD.
 PROJECT ID SIGNAGE
 TENANT MONUMENT SIGN DRIVE THRU/ PARKING SCREEN SHRUBS
 MAINTENANCE CURB PER CITY STANDARDS, TYP.
 OUTDOOR SEATING AREA
 ENHANCED DRIVE ENTRY PAVING
 TENANT MONUMENT SIGN
 TRASH ENCLOSURE SCREEN SHRUBS
 PEDESTRIAN CONNECTION TO WQMP PARCEL
 TENANT MONUMENT SIGN
 PERIMETER SETBACK TREE PLATANUS X ACERIFOLIA
 PERIMETER SETBACK TREE PYRUS 'CHANTICLEER'
 OFFSITE PLANTING. REFER TO MASTER DEVELOPER LANDSCAPE PLANS FOR OFFSITE IMPROVEMENTS, TYP.
 RAISED SEATWALLS AT STOREFRONT PLANTERS, TYP.
 STOREFRONT WALKWAY
 FLOWERING ACCENT TREES
 ENHANCED PAVING
 OUTDOOR SEATING
 ORANGE AVE.
 NORTH PLAZA
 DECORATIVE ARBOR
 SPECIMEN TREE
 ENHANCED PAVING
 OUTDOOR SEATING
 THEMATIC WATER TOWER & GREENHOUSE STRUCTURES
 TENANT MONUMENT SIGN
 CENTRAL PLAZA
 WATER FEATURE
 ARTIFICIAL TURF
 ENHANCED PAVING
 OUTDOOR SEATING
 SPECIMEN SHADE TREES
 CORNER PLAZA
 DECORATIVE ARBOR
 SPECIMEN TREE
 ENHANCED PAVING
 OUTDOOR SEATING
 THEMATIC BRIDGE & DRY CREEK ELEMENTS
 PROJECT ID SIGNAGE

Symbol	Botanical Name	Common Name	WUCOLS REGION 4	Sting	Qty.
	<i>Chilopsis linearis</i> 'Bubba'	Desert Willow	Low	36" Box Std.	77
	<i>Cercis c.</i> 'Forest Pansy'	Forest Pansy Redbud	Low	24" Box Std.	19
	<i>Geijera parviflora</i>	Australian Willow	Mod	15 Gallon Std.	107
	<i>Lagerstroemia hybrid</i> 'Tuscarora'	Hybrid Crape Myrtle	Low	24" Box Std.	15
	<i>Lagerstroemia l.</i> 'Natchez'	Natchez Crape Myrtle	Mod	24" Box Std.	18
	<i>Olea europaea</i> 'Wilsonii'	Fruitless Olive	Low	48" Box Multi.	13
	<i>Pinus eldarica</i>	Mandell Pine	Low	24" Box Std.	105
	<i>Platanus x acerifolia</i>	London Plane Tree	Mod	24" Box Std.	40
	<i>Platanus racemosa</i>	California Sycamore	Low	48" Box Multi.	5

Symbol	Botanical Name	Common Name	WUCOLS REGION 4	Sting	Qty.
	<i>Pyrus calleryana</i> 'Chanticleer'	Callery Pear	Mod	24" Box Std.	79
	<i>Quercus r.</i> 'Fastigiata'	English Oak	Mod	36" Box Std.	59
	<i>Tristania conferta</i>	Brisbane Box	Mod	24" Box Std.	77
	<i>Ulmus parvifolia</i> 'Drake'	Drake Evergreen Chinese Elm	Low	15 Gallon Std.	59
	<i>Zelkova serrata</i> 'City Sprite'	City Sprite Zelkova	Mod	36" Box Std.	105

Symbol	Botanical Name	Common Name	WUCOLS REGION 4
	<i>Agave d.</i> 'Variegata'	Variegated Smooth Agave	Low
	Aloe 'Blue Elf'	Blue Elf Aloe	Low
	<i>Anigozanthos flavidus</i>	Kangaroo Paw	Low
	<i>Baccharis p.</i> 'Twin Peaks'	Coyote Bush	Low
	<i>Cassipouira gillessii</i>	Mexican Bird of Paradise	Low
	<i>Callistemon v.</i> 'Little John'	Dwarf Bottlebrush	Low
	<i>Cistus purpureus</i>	Orchid Rock Rose	Low
	<i>Dasylirion wheeleri</i>	Desert Spoon	Low
	<i>Eremophila g.</i> 'Mingnew Gold'	Gold Emu Bush	Low
	<i>Fuchsia f.</i> 'Mediopicta'	Mauritius Hemp	Low
	<i>Grevillea lanigera</i> 'Coastal Gem'	Coastal Gem Grevillea	Low
	<i>Muhlenbergia capillaris</i>	Pink Muhly Grass	Low
	<i>Lantana</i> 'New Gold'	New Gold Lantana	Low
	<i>Leucophyllum f.</i> 'Compacta'	Texas Ranger	Low
	<i>Lomandra</i> 'Breeze'	Dwarf Mat Rush	Low
	<i>Leucophyllum f.</i> 'Compacta'	Platinum Beauty Lomandra	Low
	<i>Penstemon h.</i> 'Margarita BOP'	Margarita BOP Blue Beader	Low
	<i>Rosa</i> 'Flower Carpet'	Groundcover Rose	Mod
	<i>Rosmarinus o.</i> 'Huntington Carpet'	Creeeping Rosemary	Low
	<i>Russelia equisetiformis</i>	Coral Fountain	Mod
	<i>Salvia greggii</i> 'Flame'	Furnman's Red Autumn Sage	Low
	<i>Salvia leucantha</i>	Mexican Bush Sage	Low
	<i>Westringia f.</i> 'Munda'	Munda' Coast Rosemary	Low
	<i>Zauschneria californica</i>	California Fuchsia	Low

Symbol	Botanical Name	Common Name	WUCOLS REGION 4
	Agave 'Blue Glow'	Blue Glow Agave	Low
	Aloe 'Blue Elf'	Blue Elf Aloe	Low
	<i>Bougainvillea</i> 'Raspberry Ice'	Bougainvillea	Low
	<i>Bulbine</i> 'fulvescens' 'Halmak'	Staked Bulbine	Low
	<i>Lavandula</i> 'Meerlo'	Meerlo English Lavender	Low

Symbol	Botanical Name	Common Name	WUCOLS REGION 4
	<i>Rhamnus californica</i> 'Eve Case'	Dwarf Coffeeberry	Low
	<i>Westingia</i> 'Blue Gem'	Blue Gem Coast Rosemary	Low

NOTES:
 • PLANT MATERIAL NOT LISTED MAY BE USED, SUBJECT TO APPROVAL BY THE CITY.
 • ALL LANDSCAPE PLANS AND INSTALLATIONS SHALL ADHERE TO CITY DESIGN GUIDELINES, CODES AND REGULATIONS.
 • ALL LANDSCAPE AREAS SHALL RECEIVE AN AUTOMATIC IRRIGATION SYSTEM.
 • ALL LANDSCAPE INSTALLATIONS SHALL BE PERMANENTLY MAINTAINED.

LANDSCAPE TABULATIONS

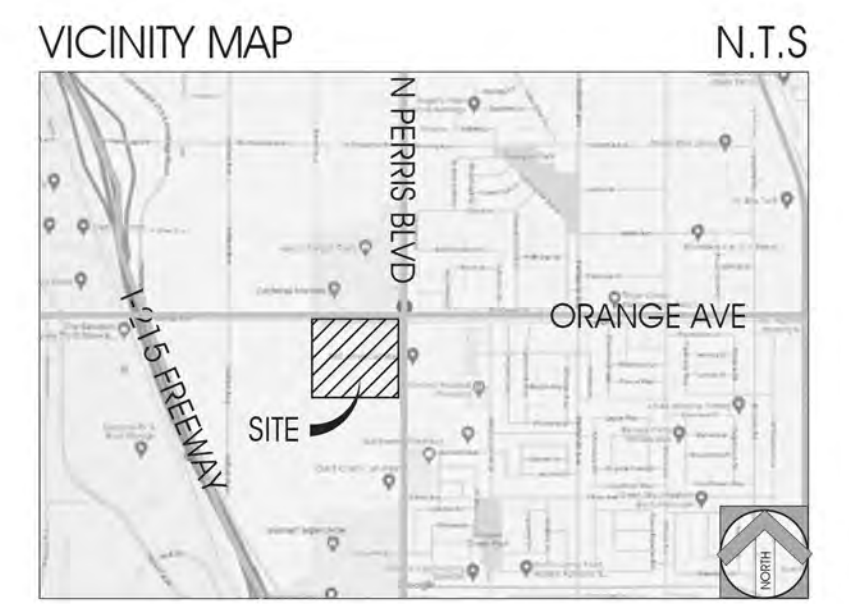
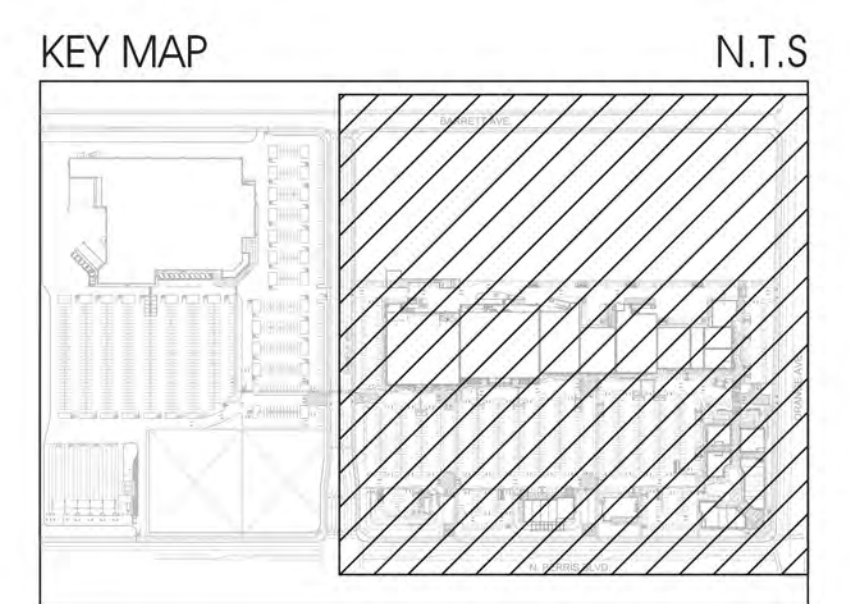
SHIPPING CENTER	PARKING LOT STALLS	PARKING LOT TREES REQUIRED	PARKING LOT TREES PROVIDED	PARKING LOT TREES 36" BOX
	1,097	182 (1 TREE PER 6 STALLS)	318	112 (30% REQUIRED)

TOTAL SITE AREA: 970,805 S.F.
 TOTAL LANDSCAPE AREA REQUIRED: 97,080 (10% OF TOTAL SITE AREA)
 TOTAL LANDSCAPE AREA PROVIDED: 117,745 S.F. (12% OF TOTAL SITE AREA)

COMMERCIAL RETAIL	PARKING LOT STALLS	PARKING LOT TREES REQUIRED	PARKING LOT TREES PROVIDED	PARKING LOT TREES 36" BOX
	849	142 (1 TREE PER 6 STALLS)	221	94 (30% REQUIRED)

TOTAL SITE AREA: 893,404 S.F.
 TOTAL LANDSCAPE AREA REQUIRED: 89,340 (10% OF TOTAL SITE AREA)
 TOTAL LANDSCAPE AREA PROVIDED: 163,890 S.F. (18% OF TOTAL SITE AREA)

OFFSITE PLANTING NOTE:
 REFER TO MASTER DEVELOPER LANDSCAPE PLANS FOR OFFSITE IMPROVEMENTS



CONCEPTUAL LANDSCAPE PLAN
 HARVEST LANDING RETAIL CENTER & BUSINESS PARK
 S.W.C. OF PERRIS BLVD AND ORANGE AVE
 PERRIS, CA 92571



0' 25' 50' 100' 150'
 SCALE 1"=150'
 CDPC PROJECT NO. 23072
 APRIL 17, 2024

conceptual design & planning company
 Corporate Office
 3195 G. Airport Loop Drive
 Studio One
 Costa Mesa, CA 92626
 T. 949.399.0870
 www.cdpc.com





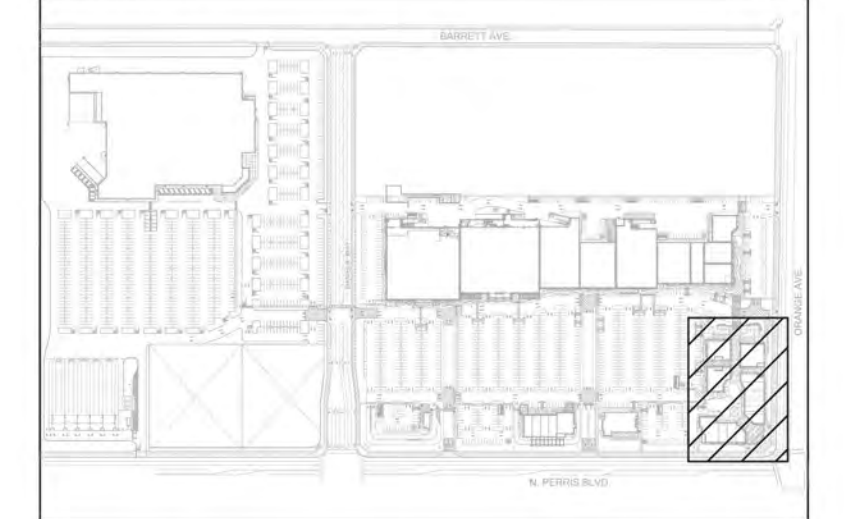
- ENHANCED VEHICULAR PAVING
- 'GREENHOUSE' STRUCTURE AS ENTRY ELEMENT
- ENHANCED LANDSCAPING AT PROJECT ENTRIES
- PROJECT SIGNAGE, REFER TO SIGN PROGRAM
- TRELLIS, TYPICAL
- TRANSFORMER
- SHRUB/GROUNDCOVER AREA, TYPICAL
- DINING TABLES/ CHAIRS
- DINING TABLES/ CHAIRS
- WATER FEATURE WITH THEMATIC SCULPTURAL ELEMENT AS A FOCAL POINT
- PLANTERS POTS TO PROVIDE BUFFER AT PATIO RAILING
- SHADE STRUCTURE PER ARCHITECT
- CONCRETE SIDEWALK
- ENHANCED PAVING PRECAST CONCRETE PAVERS
- CORNER PLAZA SPECIMEN TREE PLATANUS RACEMOSA
- THEMATIC PEDESTRIAN BRIDGE AT DRY CREEK
- CENTRAL PLANTER ISLAND WITH BUILT IN SEATING AND EVERGREEN PLAZA SHADE TREES
- CANTILEVERED SHADE STRUCTURE W/ SEATWALL
- PROJECT ID SIGNAGE
- LOW SPREADING GROUNDCOVER
- DRY CREEK FEATURE
- SMALL FLOWERING PATIO TREES TO PROVIDE SHADE AT BENCH SEATING AREA

CONCEPT MATERIAL AND FURNISHINGS IMAGERY



CONCEPT MATERIAL AND FURNISHINGS NOTE:
REFER TO ARCHITECT'S PLANS FOR ADDITIONAL INFORMATION AND SPECIFICATIONS.

KEY MAP N.T.S



VICINITY MAP N.T.S



OFFSITE PLANTING NOTE:
REFER TO MASTER DEVELOPER LANDSCAPE PLANS FOR OFFSITE IMPROVEMENTS



CONCEPTUAL LANDSCAPE PLAN
HARVEST LANDING RETAIL CENTER & BUSINESS PARK
S.W.C. OF PERRIS BLVD AND ORANGE AVE
PERRIS, CA 92571



SCALE: 1"=20'
CDPC PROJECT NO. 23072
APRIL 17, 2024

conceptual design & planning company
Corporate Office:
3195 S. Airport Loop Drive
Bldg One
Costa Mesa, CA 92626
T. 949.399.0870
www.cdpc.com





PLANT PALETTE

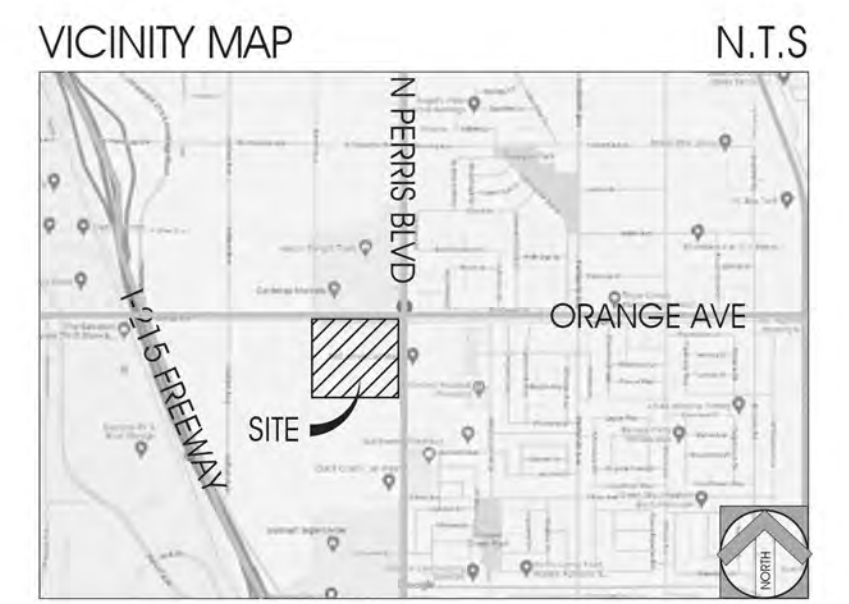
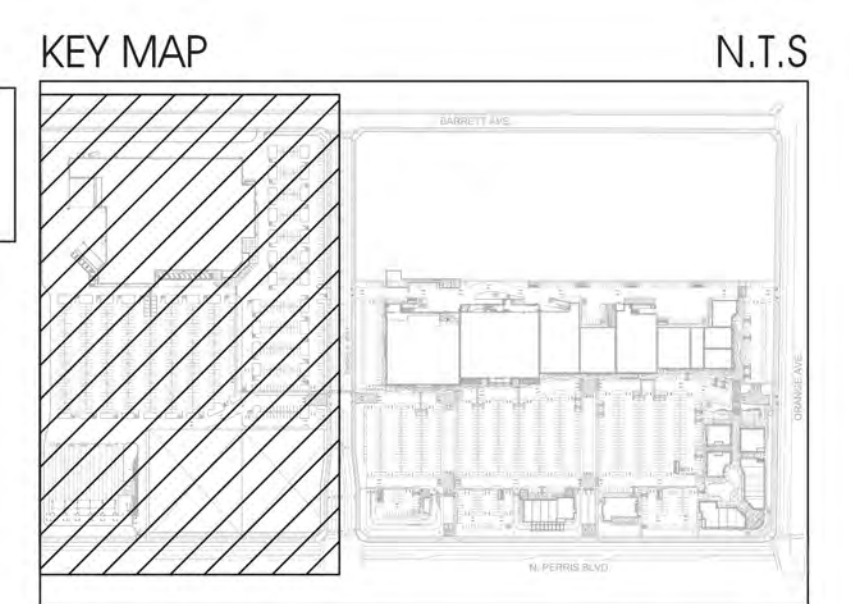
Symbol	Botanical Name	Common Name	WUCOLS REGION 4	Sizing	Qty.
	<i>Chilopsis linearis</i> 'Bubba'	Desert Willow	Low	36' Box Std.	77
	<i>Cercis c.</i> 'Forest Pansy'	Forest Pansy Redbud	Low	24' Box Std.	19
	<i>Geijera parviflora</i>	Australian Willow	Mod	15 Gallon Std.	107
	<i>Lagerstroemia hybrid</i> 'Tuscarora'	Hybrid Crape Myrtle	Low	24' Box Std.	15
	<i>Lagerstroemia l.</i> 'Natchez'	Natchez Crape Myrtle	Mod	24' Box Std.	18
	<i>Olea europaea</i> 'Wilsoni'	Fruitless Olive	Low	48' Box Multi.	13
	<i>Pinus eldarica</i>	Mondell Pine	Low	24' Box Std.	105
	<i>Platanus x acerifolia</i>	London Plane Tree	Mod	24' Box Std.	40
	<i>Platanus racemosa</i>	California Sycamore	Low	48' Box Multi.	5
	<i>Pyrus calleryana</i> 'Chanticleer'	Callery Pear	Mod	24' Box Std.	79
	<i>Quercus r.</i> 'Fastigiata'	English Oak	Mod	36' Box Std.	59
	<i>Tristania conferta</i>	Brisbane Box	Mod	24' Box Std.	77
	<i>Ulmus parvifolia</i> 'Drake'	Drake Evergreen Chinese Elm	Low	15 Gallon Std.	59
	<i>Zelkova serrata</i> 'City Sprite'	City Sprite Zelkova	Mod	36' Box Std.	105

SHRUBS/ GROUNDCOVERS

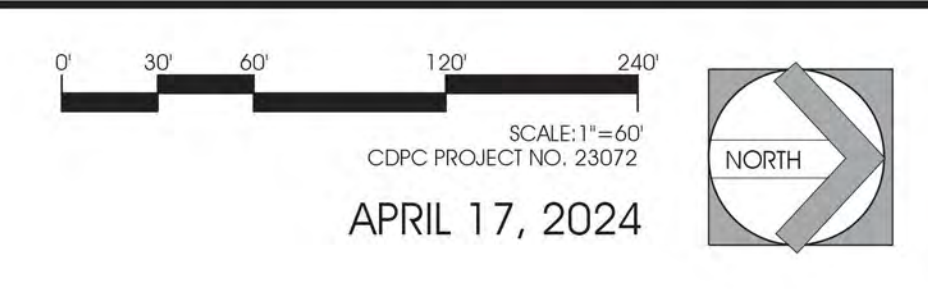
Symbol	Botanical Name	Common Name	WUCOLS REGION 4
	<i>Agave d.</i> 'Variegata'	Variegated Smooth Agave	Low
	<i>Aloe</i> 'Blue Elf'	Blue Elf Aloe	Low
	<i>Arigozanthus flavidus</i>	Kangaroo Paw	Low
	<i>Baccharis p.</i> 'Twin Peaks'	Coyote Bush	Low
	<i>Caesalpinia gilliesii</i>	Mexican Bird of Paradise	Low
	<i>Callistemon v.</i> 'Little John'	Dwarf Bottlebrush	Low
	<i>Cistus purpureus</i>	Orchid Rock Rose	Low
	<i>Dasylium wheeleri</i>	Desert Spoon	Low
	<i>Eremophila g.</i> 'Mingnew Gold'	Gold Emu Bush	Low
	<i>Fuchsia f.</i> 'Mediopicta'	Mauflitus Hemp	Low
	<i>Grevillea lanigera</i> 'Coastal Gem'	Coastal Gem Grevillea	Low
	<i>Muhlenbergia capillaris</i>	Pink Muhly Grass	Low
	<i>Lantana New Gold</i>	New Gold Lantana	Low
	<i>Leucophyllum f.</i> 'Compacta'	Texas Ranger	Low
	<i>Lomandra</i> 'Breeze'	Dwarf Mat Rush	Low
	<i>Leucophyllum f.</i> 'Compacta'	Platinum Beauty Lomandra	Low
	<i>Penstemon h.</i> 'Margarita BOP'	Margarita BOP Blue Bedder	Low
	<i>Rosa</i> 'Flower Carpet'	Groundcover Rose	Mod
	<i>Rosmarinus o.</i> 'Huntington Carpet'	Creeping Rosemary	Mod
	<i>Russelia equisetiformis</i>	Coral Fountain	Low
	<i>Salvia greggii</i> 'Flame'	Furman's Red Autumn Sage	Low
	<i>Salvia leucantha</i>	Mexican Bush Sage	Low
	<i>Westringia f.</i> 'Munda'	Mundi Coast Rosemary	Low
	<i>Zauschneria californica</i>	California Fuchsia	Low

- NOTES:**
- PLANT MATERIAL NOT LISTED MAY BE USED, SUBJECT TO APPROVAL BY THE CITY.
 - ALL LANDSCAPE PLANS AND INSTALLATIONS SHALL ADHERE TO CITY DESIGN GUIDELINES, CODES AND REGULATIONS.
 - ALL LANDSCAPE AREAS SHALL RECEIVE AN AUTOMATIC IRRIGATION SYSTEM.
 - ALL LANDSCAPE INSTALLATIONS SHALL BE PERMANENTLY MAINTAINED.

OFFSITE PLANTING NOTE:
REFER TO MASTER DEVELOPER LANDSCAPE PLANS FOR OFFSITE IMPROVEMENTS

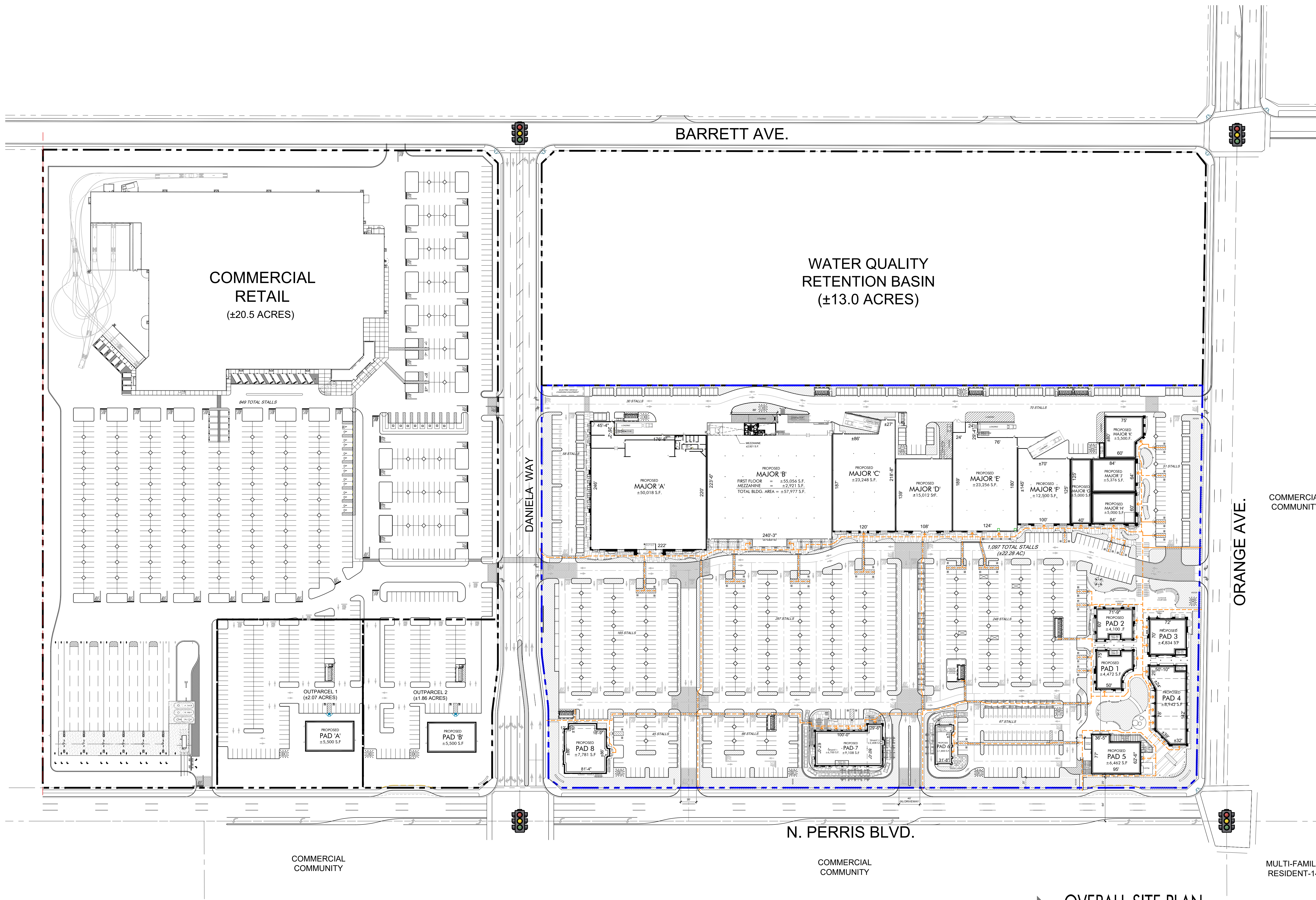


CONCEPTUAL LANDSCAPE PLAN
HARVEST LANDING RETAIL CENTER & BUSINESS PARK
 S.W.C. OF PERRIS BLVD AND ORANGE AVE
 PERRIS, CA 92571



conceptual design & planning company
 Corporate Office
 3195 S. Airport Loop Drive
 Buena Vista, CA 92626
 T. 949.399.0870
 www.cdpcorp.com





LEGEND

- PROPOSED SITE AREA (±22.28 AC)
- NEW BUILDING
- NEW PLANTER AREA. SEE LANDSCAPE PLANS.
- HANDICAP INDICATION PATH OF TRAVEL

OVERALL SITE PLAN
SCALE: 1" = 80'-0"

GRAPHIC SCALE
0 40 80 160 240
1 inch = 80 feet

NOTE:
See Sheet T100 for proposed building and parking summary.

PRELIMINARY SITE PLAN SUBJECT TO CHANGE.
PROPERTY LINES ARE BASED ON CAD DRAWINGS PROVIDED BY CLIENT, PREPARED BY FMCIVIL ENGINEERS INC. RECEIVED FROM CLIENT 06.06.2023.

HIP So-Cal Properties LLC
2244 N. Pacific Street
Orange, CA 92865
TEL. (714) 637-3333

AZURE DEVELOPMENT CO.
944 South Greenwood Avenue
Montebello, CA 90640
TEL. (310) 467-7408



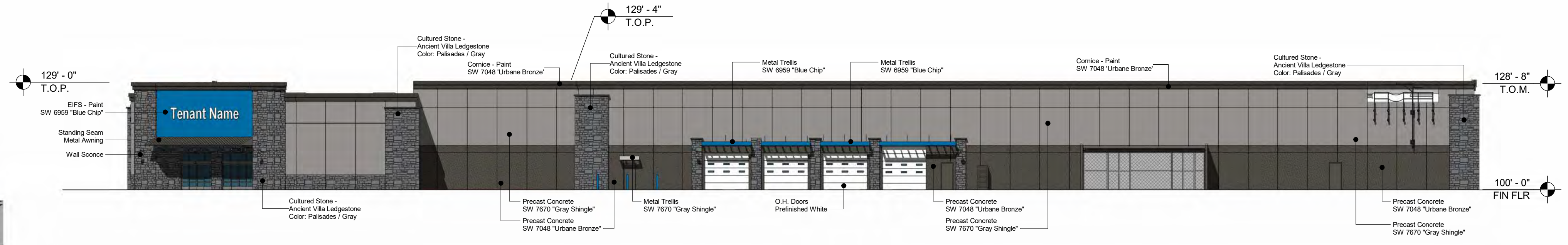
Harvest Landing Retail Center & Business Park
SWC Perris Blvd. & Orange Ave., Perris CA 92571

PROPOSED SITE PLAN
22161MMA | 04.09.2024
SP-1

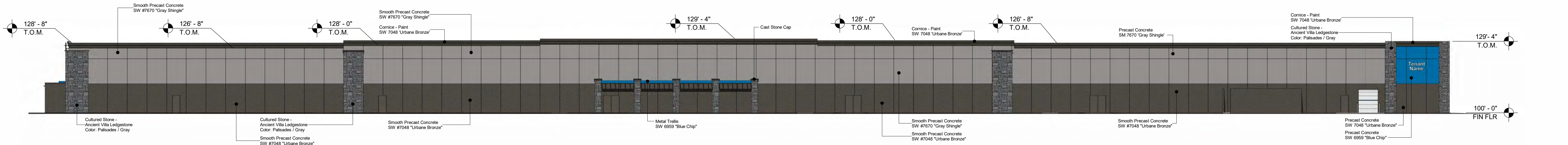
mmaararchitecture.com
mma
Architecture



5 ENTRY CLOSE UP



4 NORTH ELEVATION
1" = 20'-0" 1 A1



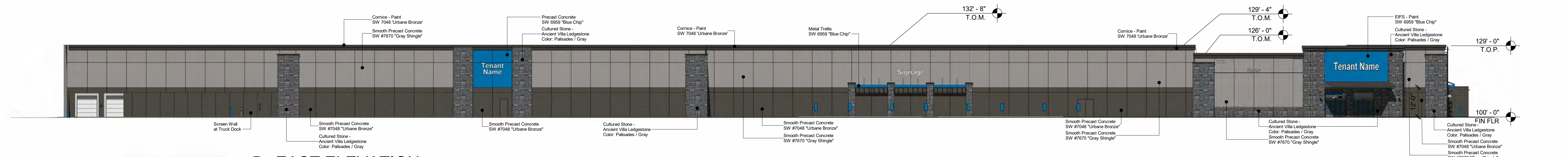
3 WEST ELEVATION
1" = 20'-0" 1 A1



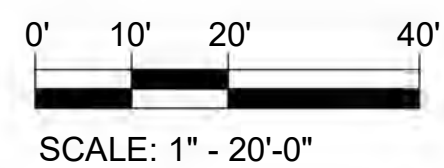
6 SIDE PERSPECTIVE



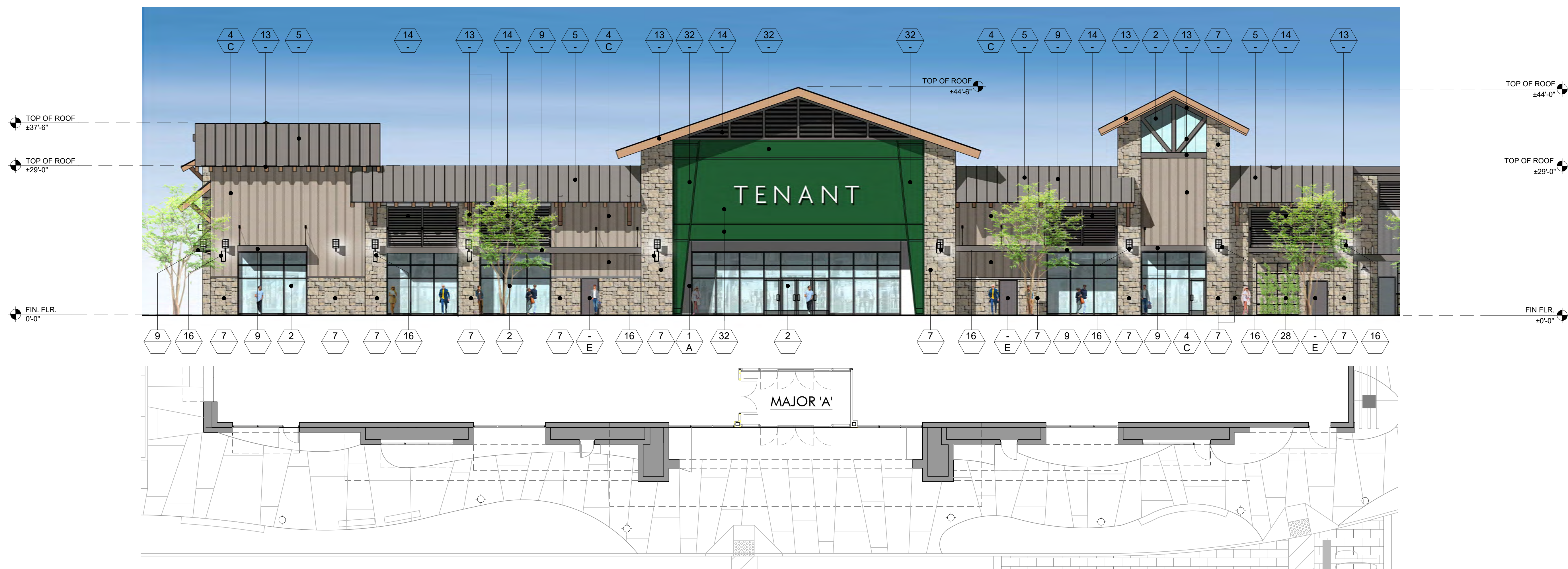
2 SOUTH ELEVATION
1" = 20'-0" 1 A1



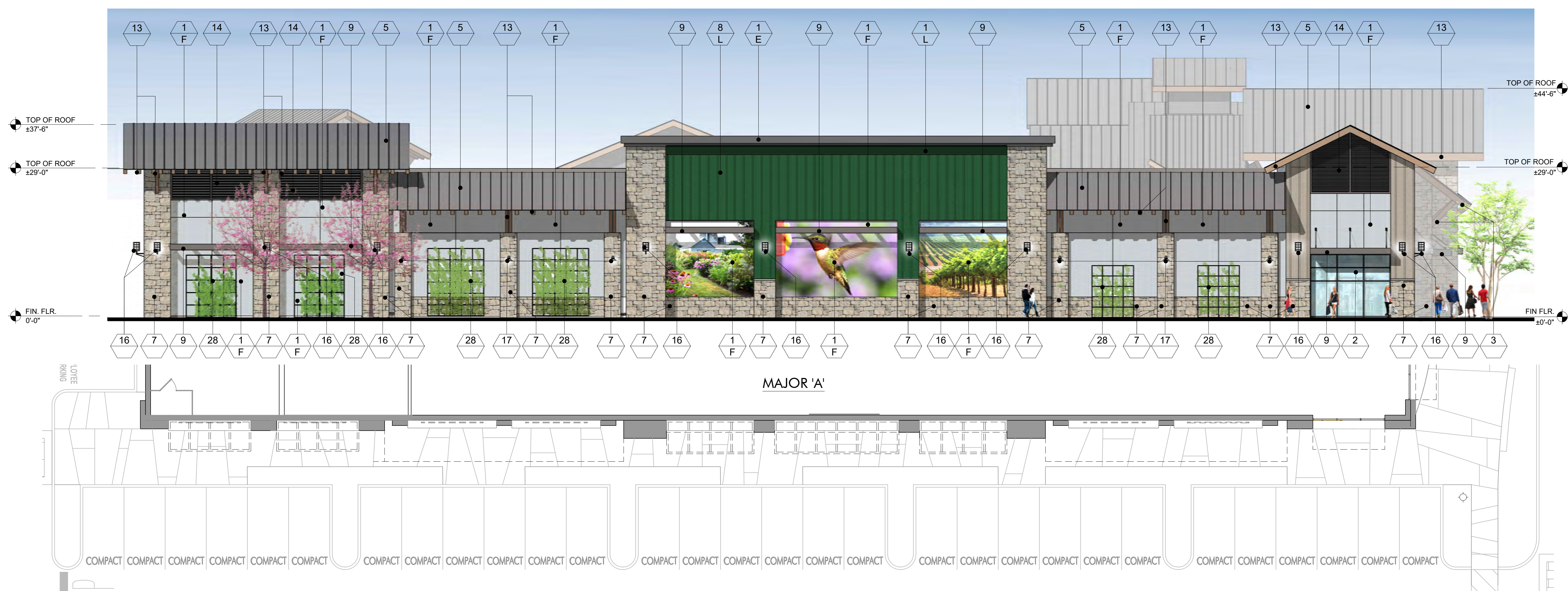
1 EAST ELEVATION
1" = 20'-0" 1 A1







1 EAST ELEVATION - MAJOR 'A'
SCALE: 3/32" = 1'-0"



2 SOUTH ELEVATION - MAJOR 'A'

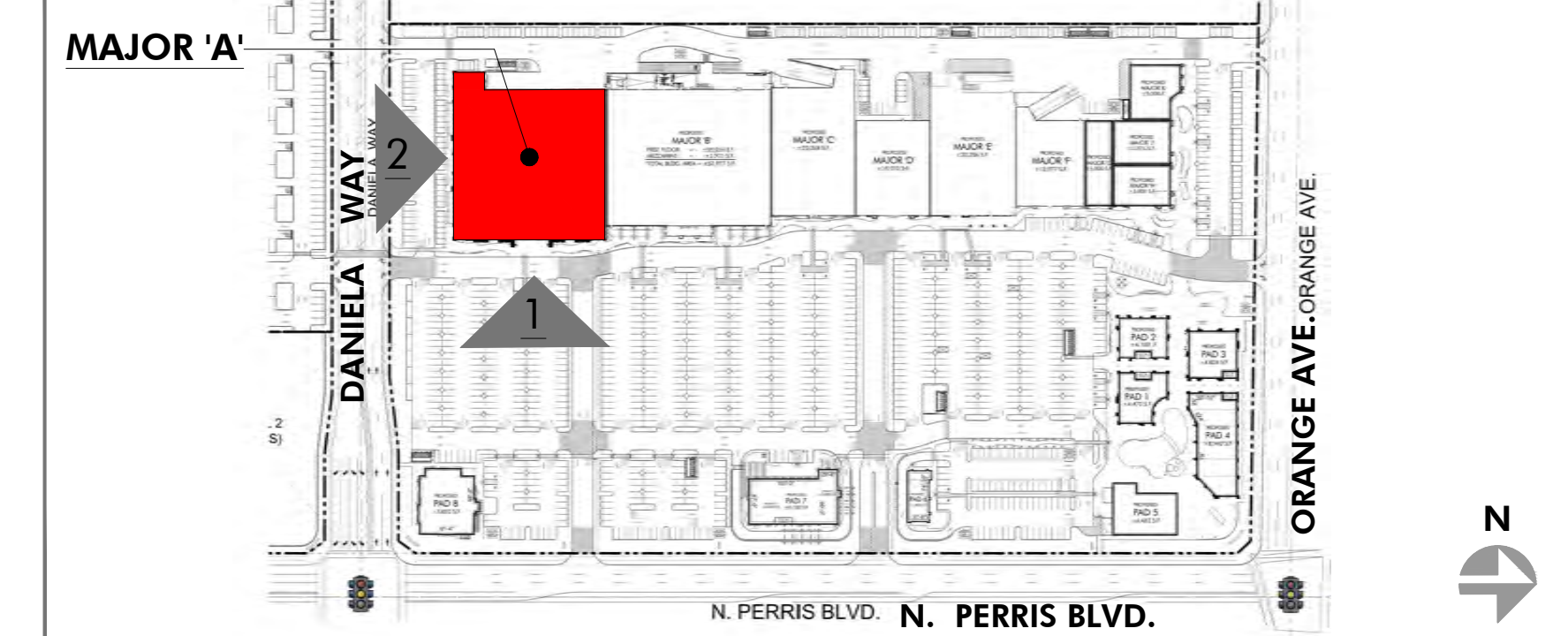


3 OVERALL EAST EXTERIOR ELEVATION
SCALE: 1" = 30'-0"

FINISH LEGEND

KEY	MATERIAL	KEY	MATERIAL
23	TRASH RECEPTACLES MANUFACTURER: VICTOR STANLEY MODEL: SDC-36 COLOR: BLACK	1	STUCCO - SMOOTH MANUFACTURER: HIGHLAND STUCCO FINISH: STEEL TROWEL - PAINTED DUNN EDWARDS
24	BIKE RACKS MANUFACTURER: VICTOR STANLEY MODEL: FREESIA BIKE RACK COLOR: BLACK	2	STOREFRONT MANUFACTURER: ARCADIA - COLOR #85 DARK BRONZE AB-7 STOREFRONT GLASS VITRO ARCH. GLASS - 1" CLEAR FLOAT GLASS
25	METAL AWNING MANUFACTURER: METAL SALES MODEL: MAGNA-LOC 180 MISTIQUE PLUS (W31)	2A	SPANDREL GLASS VITRO ARCH. GLASS AV933 WARM GRAY #2
26	CONCRETE PAVERS MANUFACTURER: ACKERSTONE MODEL: 4x16 - NO CHAMFER, RUNNING BOND COLOR: BELLASINA BLEND	3	BRICK VENEER MANUFACTURER: INTERSTATE BRICK MODEL: THIN MODULAR 2 1/8 COLOR: ARCTIC WHITE GROUT COLOR: #381 BRIGHT WHITE BY CUSTOMS BUILDING PRODUCT
27	CONCRETE PAVING MANUFACTURER: BY GENERAL CONTRACTOR FINISH: ACID WASH FINISH, SAW CUT LINES. COLOR: NATURAL GRAY	4	BATTEN BOARD SIDING MANUFACTURER: HARDIE BOARD MODEL: HARDIE PLANK SMOOTH VERTICAL PANELS (10' x 4' x 5/8") W/ TRIM BOARDS (1" x 3.5") COLOR: PRIMED AND PAINTED W/ 2-COATS FLAT ACRYLIC LATEX - EGGSHELL BY DUNN EDWARDS BATTEN SPACING AT 12" CENTER TO CENTER.
28	GREENSCREEN MANUFACTURER: GREENSCREEN COLOR: MATTE TEXTURE GREEN	5	STANDING SEAM METAL ROOF MANUFACTURER: METAL SALES MODEL: MAGNA-LOC 180 COLOR: SLATE GRAY (W38)
29	PATIO FURNITURE MANUFACTURER: EMU CONTRACT SEGO #288 - ARM CHAIR, 22 A/IRON CANBI #R02 MESH TABLE - 36" SQ. 22 A/IRON UMBRELLA - ALUMINUM SQUARE (118" x 118") COLOR: CANOPY BEIGE STEEL BASE (24" SQ.) SILVER	6	METAL WALL PANELS MANUFACTURER: METAL SALES MODEL: EM1 - 1653 WALL PANEL COLOR: SLATE GRAY (W38)
30	STRINGS LIGHTS MANUFACTURER: TIVOLI LIGHTING MODEL: LITESPHERE LED, 3000K USE 3/8" STEEL CABLE WIRE (BY OTHERS) COLOR: CLEAR	7	STONE VENEER MANUFACTURER: ELDERADO STONE MODEL: ROUGHOUT COLOR: VINEYARD TRAIL
31	WALL LIGHT - LOADING AREAS MANUFACTURER: KIM LIGHTING MODEL: W35 WALL DIRECTOR (SMALL) - DOWN COLOR: BLT - BLACK MATTE TEXTURE	8	SIDING MANUFACTURER: HARDIE BOARD MODEL: ARTISAN SQUARE CHANNEL COLOR: PRIMED TO PAINT
33	COMPOSITE SIDING MANUFACTURER: AZEK MODEL: OPEN JOINT CLADDING COLOR: WEATHERED TEAK	9	METAL CANOPY MANUFACTURER: BY GENERAL CONTRACTOR FINISH: PAINTED COLOR: DE 6385 BLACK BEAN - SEMI GLOSS BY DUNN EDWARDS
34	CMU BLOCK MANUFACTURER: ORCO BLOCK MODEL: SPLIT FACE BLOCK COLOR: NATURAL GRAY	10	DICKS SPORTING GOODS METAL FRAME FACADE COLOR: DE 690 WOODY BLUES - SEMI GLOSS BY DUNN EDWARDS
35	CMU BLOCK MANUFACTURER: ORCO BLOCK MODEL: SPLIT FACE BLOCK COLOR: BLACK 100	11	METAL TRELLIS, POST & STEEL FRAMING MANUFACTURER: BY GENERAL CONTRACTOR FINISH: PAINTED COLOR: DE 6385 BLACK BEAN - SEMI GLOSS BY DUNN EDWARDS
36	WOOD BEAM HEADER WOOD VENEER BEAM FINISH: SEMI-TRANSPARENT STAIN COLOR COLOR: RUSTIC CEDAR	12	PRECAST CONCRETE BASE MANUFACTURER: EMPIRE PRECAST FINISH: SANDSTONE COLOR: NATURAL GRAY
37	ENTRY DRIVE PAVERS MANUFACTURER: ACKERSTONE MODEL: PALERMO COLOR: ANTIQUE PEWTER	13	WOOD EAVES / FASCIA MANUFACTURER: BY GENERAL CONTRACTOR OLYMPIC COLOR: BUTTERNUT SOLID COLOR WATERPROOFING STAIN / SEALER BY DUNN EDWARDS
38	MANUFACTURER: FX SHADE OR EQUAL MODEL: TRELLIS SHADE - RETRACTABLE COLOR: WHITE	14	WALL LOUVERS MANUFACTURER: ARCHITECTURE WALL LOUVERS MODEL: 4" STANDARD BLADE COLOR: DE 6385 BLACK BEAN - SEMI GLOSS BY DUNN EDWARDS
39	STANDING SEAM COVERED PATIO W/ METAL FRAME MANUFACTURER: METAL SALES MODEL: MAGNA-LOC 180 COLOR: SLATE GRAY (W38)	15	METAL BRACKETS MANUFACTURER: BY GENERAL CONTRACTOR FINISH: PAINTED COLOR: DE 6385 BLACK BEAN - SEMI GLOSS BY DUNN EDWARDS
KEY PAINT COLORS		16	WALL SCIENCE MANUFACTURER: HESS MODEL: LED VILLAGE 375 WALL MOUNT COLOR: BLACK
-	PAINT COLOR: IGLOO DEW379 BY: DUNN EDWARDS	17	WALL SCIENCE MANUFACTURER: INTRIGUE LIGHTING LED MODEL: LARGE METRO COLOR: BLACK
A	PAINT COLOR: SILVERLINED DE6353 BY: DUNN EDWARDS	18	WALL SCIENCE MANUFACTURER: INTRIGUE LIGHTING LED MODEL: EPIC COLOR: BLACK
B	PAINT COLOR: DRIFTING DEC770 BY: DUNN EDWARDS	19	WALL SCIENCE (SERVICE DOORS) MANUFACTURER: BEGA MODEL: 33 224 LED COLOR: BLACK
C	PAINT COLOR: SMOKEY MOUNTAIN DE6388 BY: DUNN EDWARDS	20	PEDESTRIAN POLE LIGHT MANUFACTURER: INTRIGUE LIGHTING LED MODEL: ELEGANT, SIDE ARM SHEPHERDS CROOK MOUNT POLE: P3A SERIES 15' HIGH
D	PAINT COLOR: BANK VAULT DE6383 BY: DUNN EDWARDS	21	SIGN LIGHTS MANUFACTURER: TMS LIGHTING MODEL: SIGN 18 LED COLOR: MATTE BLACK
E	PAINT COLOR: SILVER SETTING DE6359 BY: DUNN EDWARDS	22	TRELLIS LIGHTS MANUFACTURER: LIGHTWAY MODEL: PDSW-S-LED COLOR: SATIN BLACK
F	PAINT COLOR: ALWAYS ALMOND BY: PPG 1099-1		
G	PAINT COLOR: JERICHO JADE BY: PPG 1142-6		
H	PAINT COLOR: WEATHERED LEATHER DE6105 BY: DUNN EDWARDS		
J	PAINT COLOR: KILN DRIED DE1692 BY: DUNN EDWARDS		
K	PAINT COLOR: HARTFORD GREEN BY: SHERWIN WILLIAMS		
L	PAINT COLOR: HARTFORD GREEN BY: SHERWIN WILLIAMS		

KEYMAP



PRELIMINARY SUBJECT TO CHANGE

HIP So-Cal Properties LLC
2244 N. Pacific Street
Orange, CA 92865
TEL. (714) 637-3333

 AZURE DEVELOPMENT CO.
944 South Greenwood Avenue
Montebello, CA 90640
TEL. (310) 467-7408



Harvest Landing Retail Center & Business Park
SWC Perris Blvd. & Orange Ave., Perris CA 92571

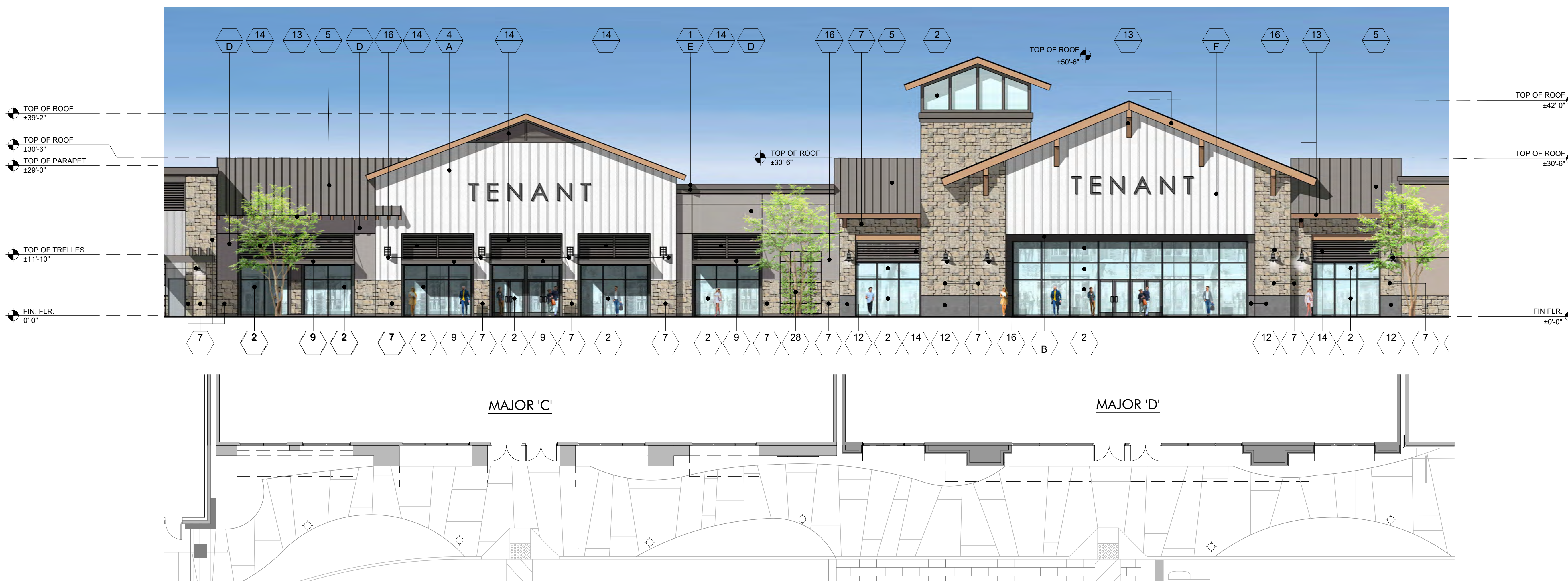
EXTERIOR ELEVATIONS
22161MMA | 08.07.2024

A201





1 EAST ELEVATION - MAJOR 'B'
SCALE: 3/32" = 1'-0"

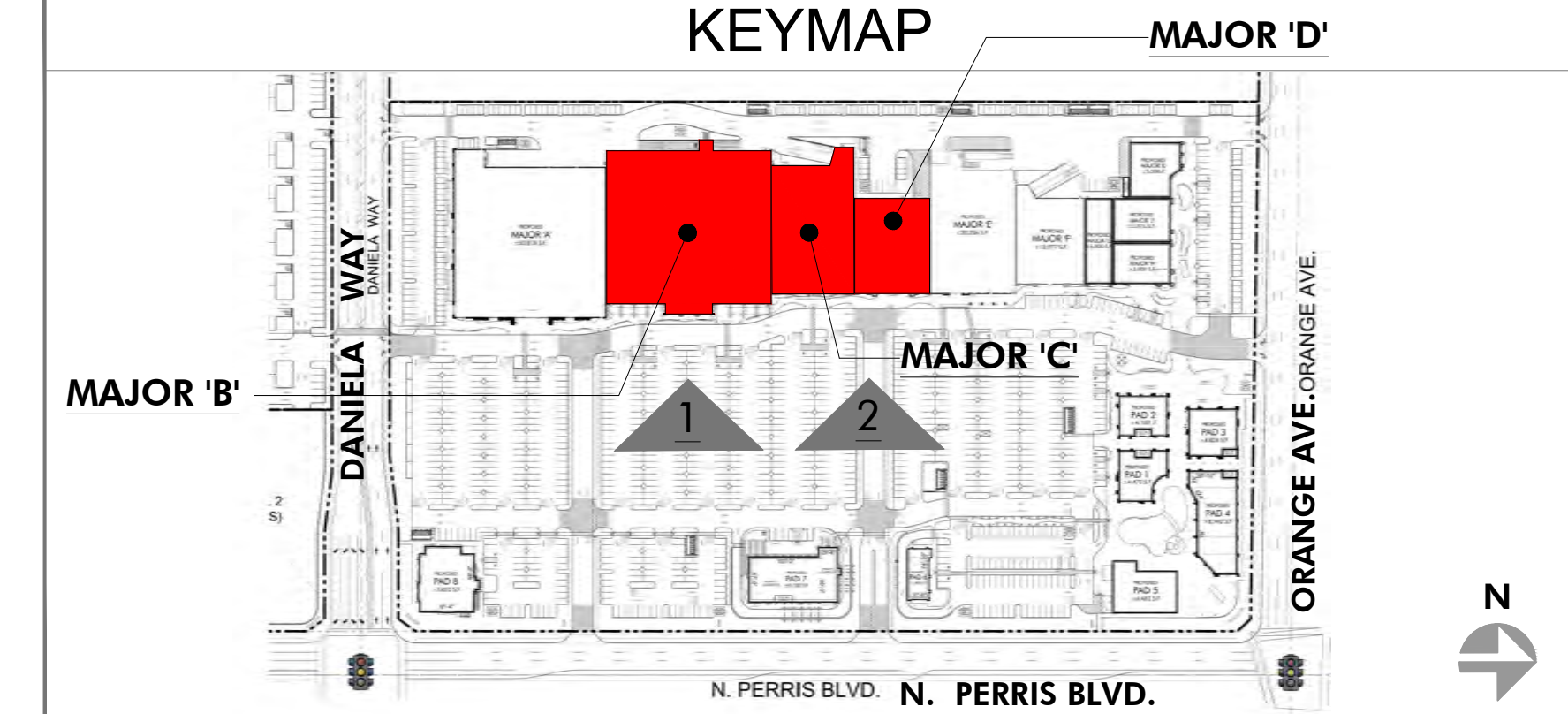


2 EAST ELEVATION - MAJOR 'C' & 'D'
SCALE: 3/32" = 1'-0"



3 OVERALL EAST EXTERIOR ELEVATION
SCALE: 1" = 30'-0"

FINISH LEGEND			
KEY	MATERIAL	KEY	MATERIAL
23	TRASH RECEPTACLES MANUFACTURER: VICTOR STANLEY MODEL: SDC-36 COLOR: BLACK	1	STUCCO - SMOOTH MANUFACTURER: HIGHLAND STUCCO FINISH: STEEL TROWEL - PAINTED DUNN EDWARDS
24	BIKE RACKS MANUFACTURER: VICTOR STANLEY MODEL: FREESIA BIKE RACK COLOR: BLACK	2	STOREFRONT MANUFACTURER: ARCADIA - COLOR: #85 DARK BRONZE AB-7 STOREFRONT GLASS VITRO ARCH. GLASS - 1" CLEAR FLOAT GLASS
25	METAL AWNING MANUFACTURER: METAL SALES MODEL: MAGNA-LOC 180 MISTIQUE PLUS (W31)	2A	SPANDREL GLASS VITRO ARCH. GLASS AV933 WARM GRAY #2
26	CONCRETE PAVERS MANUFACTURER: ACKERSTONE MODEL: 4x16 - NO CHAMFER, RUNNING BOND COLOR: BELLASINA BLEND	3	BRICK VENEER MANUFACTURER: INTERSTAR BRICK MODEL: THIN MODULAR 2 1/8 COLOR: ARCTIC WHITE GROUT COLOR: #381 BRIGHT WHITE BY CUSTOMS BUILDING PRODUCT
27	CONCRETE PAVING MANUFACTURER: BY GENERAL CONTRACTOR FINISH: ACID WASH FINISH, SAW CUT LINES. COLOR: NATURAL GRAY	4	BATTEN BOARD SIDING MANUFACTURER: HARDIE BOARD MODEL: HARDIE PLANK SMOOTH VERTICAL PANELS (10' x 4' x 5/8") W/ TRIM BOARDS (1" x 3.5") COLOR: PRIMED AND PAINTED W/ 2-COATS FLAT ACRYLIC LATEX - EGGSHELL BY DUNN EDWARDS BATTEN SPACING AT 12" CENTER TO CENTER.
28	GREENSCREEN MANUFACTURER: GREENSCREEN COLOR: MATTE TEXTURE GREEN	5	STANDING SEAM METAL ROOF MANUFACTURER: METAL SALES MODEL: MAGNA-LOC 180 COLOR: SLATE GRAY (W38)
29	PATIO FURNITURE MANUFACTURER: EMU CONTRACT SEGO #288 - ARM CHAIR, 22 A/IRON CAMBI #R02 MESH TABLE - 36" SQ. 22 A/IRON UMBRELLA - ALUMINUM SQUARE (118" x 118") COLOR: CANOPY BEIGE STEEL BASE (24" SQ.) SILVER	6	METAL WALL PANELS MANUFACTURER: METAL SALES MODEL: EM1 - 1653 WALL PANEL COLOR: SLATE GRAY (W38)
30	STRING LIGHTS MANUFACTURER: TIVOLI LIGHTING MODEL: LITESPHERE LED, 3000K USE 3/8" STEEL CABLE WIRE (BY OTHERS) COLOR: CLEAR	7	STONE VENEER MANUFACTURER: ELDERADO STONE MODEL: ROUGHOUT COLOR: VINEYARD TRAIL
31	WALL LIGHT - LOADING AREAS MANUFACTURER: KM LIGHTING MODEL: W05 WALL DIRECTOR (SMALL) - DOWN COLOR: BLT - BLACK MATTE TEXTURE	8	SIDING MANUFACTURER: HARDIE BOARD MODEL: ARTISAN SQUARE CHANNEL COLOR: PRIMED TO PAINT
33	COMPOSITE SIDING MANUFACTURER: AZEK MODEL: OPEN JOINT CLADDING COLOR: WEATHERED TEAK	9	METAL CANOPY MANUFACTURER: BY GENERAL CONTRACTOR FINISH: PAINTED COLOR: DE 6385 BLACK BEAN - SEMI GLOSS BY DUNN EDWARDS
34	CMU BLOCK MANUFACTURER: ORCO BLOCK MODEL: SPLIT FACE BLOCK COLOR: NATURAL GRAY	10	DICKS SPORTING GOODS METAL FRAME FACADE COLOR: DEF 690 WOODY BLUES - SEMI GLOSS BY DUNN EDWARDS
35	CMU BLOCK MANUFACTURER: ORCO BLOCK MODEL: SPLIT FACE BLOCK COLOR: BLACK 100	11	METAL TRELLIS, POST & STEEL FRAMING MANUFACTURER: BY GENERAL CONTRACTOR FINISH: PAINTED COLOR: DE 6385 BLACK BEAN - SEMI GLOSS BY DUNN EDWARDS
36	WOOD BEAM HEADER WOOD VENEER BEAM FINISH: SEMI-TRANSPARENT STAIN COLOR COLOR: RUSTIC CEDAR	12	PRECAST CONCRETE BASE MANUFACTURER: EMPIRE PRECAST FINISH: SANDSTONE COLOR: NATURAL GRAY
37	ENTRY DRIVE PAVERS MANUFACTURER: ACKERSTONE MODEL: PALERMO COLOR: ANTIQUE PEWTER	13	WOOD EAVES / FASCIA MANUFACTURER: BY GENERAL CONTRACTOR OLYMPIC COLOR: BUTTERNUT SOLID COLOR WATERPROOFING STAIN / SEALER
38	MANUFACTURER: FX SHADE OR EQUAL MODEL: TRELLIS SHADE - RETRACTABLE COLOR: WHITE	14	WALL LOUVERS MANUFACTURER: ARCHITECTURE WALL LOUVERS FINISH: PAINTED COLOR: DE 6385 BLACK BEAN - SEMI GLOSS BY DUNN EDWARDS
39	STANDING SEAM COVERED PATIO W/ METAL FRAME MANUFACTURER: METAL SALES MODEL: MAGNA-LOC 180 COLOR: SLATE GRAY (W38)	15	METAL BRACKETS MANUFACTURER: BY GENERAL CONTRACTOR FINISH: PAINTED COLOR: DE 6385 BLACK BEAN - SEMI GLOSS BY DUNN EDWARDS
KEY PAINT COLORS		16	WALL SCIENCE MANUFACTURER: HESS MODEL: LED VILLAGE 375 WALL MOUNT COLOR: BLACK
A	PAINT COLOR: IGL00 DEW379 BY: DUNN EDWARDS	17	WALL SCIENCE MANUFACTURER: INTRIGUE LIGHTING LED MODEL: LARGE METRO COLOR: BLACK
B	PAINT COLOR: SILVERLINED DE6353 BY: DUNN EDWARDS	18	WALL SCIENCE MANUFACTURER: INTRIGUE LIGHTING LED MODEL: EPIC COLOR: BLACK
C	PAINT COLOR: DRIFTING DEC770 BY: DUNN EDWARDS	19	WALL SCIENCE (SERVICE DOORS) MANUFACTURER: BEGA MODEL: 33 224 LED COLOR: BLACK
D	PAINT COLOR: SMOKEY MOUNTAIN DE6388 BY: DUNN EDWARDS	20	PEDESTRIAN POLE LIGHT MANUFACTURER: INTRIGUE LIGHTING LED MODEL: ELEGANT, SIDE ARM SHEPHERDS CROOK MOUNT POLE: P3A SERIES 15' HIGH
E	PAINT COLOR: BANK VAULT DE6383 BY: DUNN EDWARDS	21	SIGN LIGHTS MANUFACTURER: TMS LIGHTING MODEL: SIGN 18 LED COLOR: MATTE BLACK
F	PAINT COLOR: SILVER SETTING DE6359 BY: DUNN EDWARDS	22	TRELLIS LIGHTS MANUFACTURER: LIGHTWAY MODEL: PDSW-S-LED COLOR: SATIN BLACK
G	PAINT COLOR: ALWAYS ALMOND BY: PPG 1099-1		
H	PAINT COLOR: JERICHO JADE BY: PPG 1142-6		
J	PAINT COLOR: WEATHERED LEATHER DE6105 BY: DUNN EDWARDS		
K	PAINT COLOR: KILN DRIED DE1692 BY: DUNN EDWARDS		
L	PAINT COLOR: HARTFORD GREEN BY: SHERWIN WILLIAMS		



PRELIMINARY SUBJECT TO CHANGE

HIP So-Cal Properties LLC
2244 N. Pacific Street
Orange, CA 92865
TEL. (714) 637-3333

 AZURE DEVELOPMENT CO.
944 South Greenwood Avenue
Montebello, CA 90640
TEL. (310) 467-7408



Harvest Landing Retail Center & Business Park
SWC Perris Blvd. & Orange Ave., Perris CA 92571

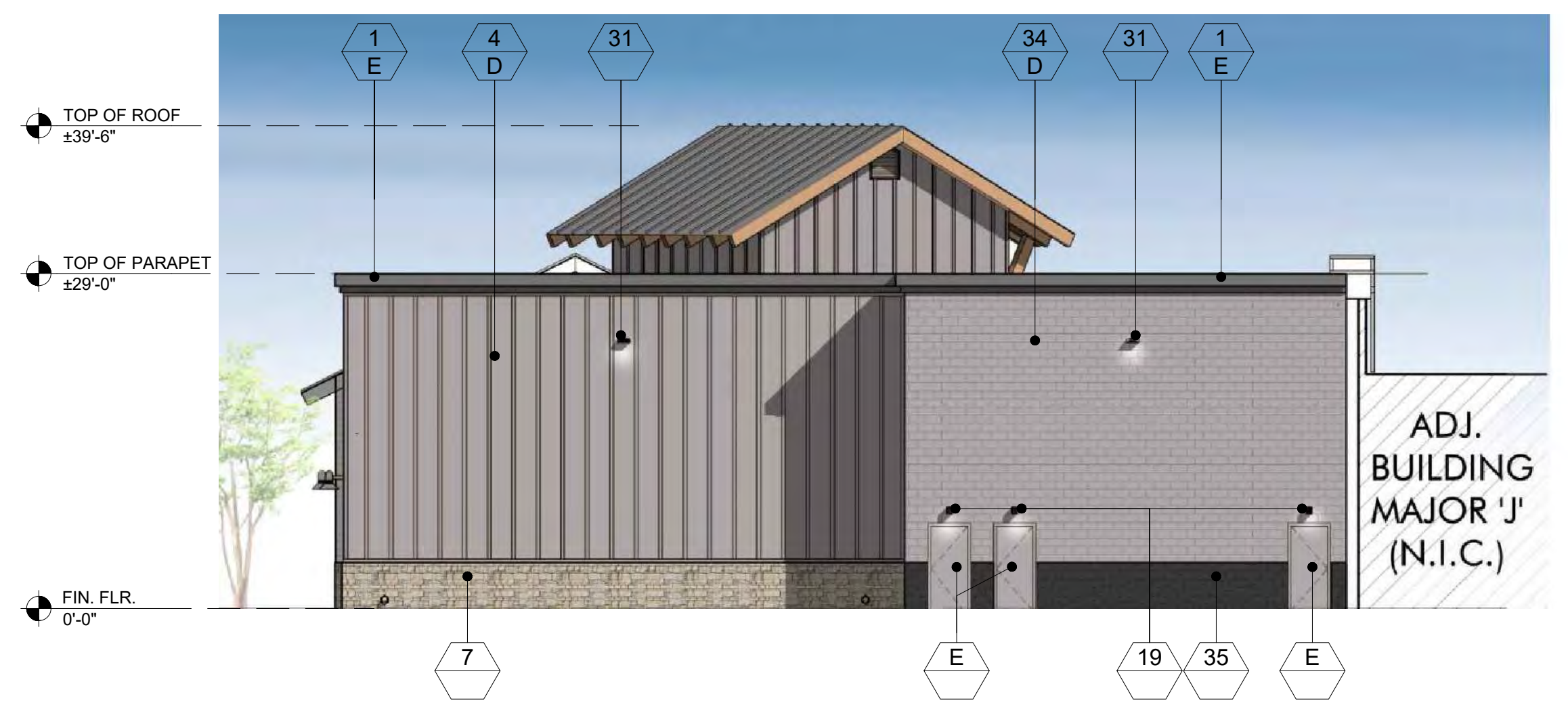
EXTERIOR ELEVATIONS
22161MMA | 08.07.2024

A202

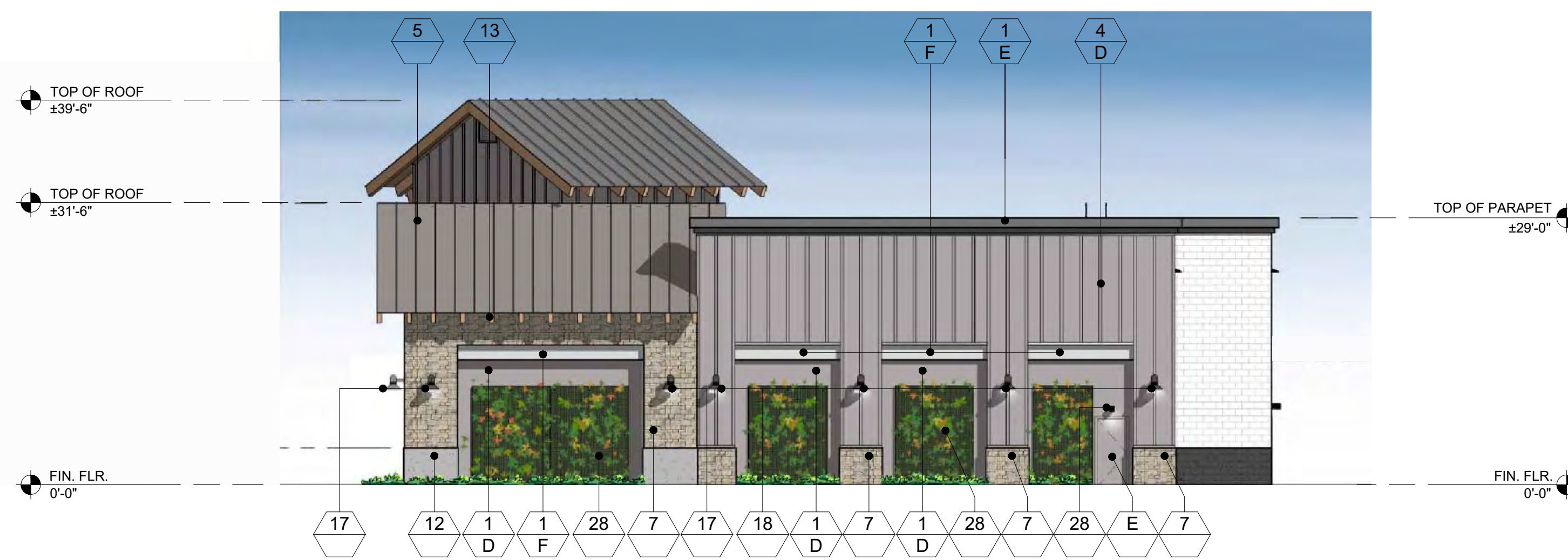




1 NORTH ELEVATION - MAJOR 'H', 'J' & 'K'
SCALE: 3/32" = 1'-0"

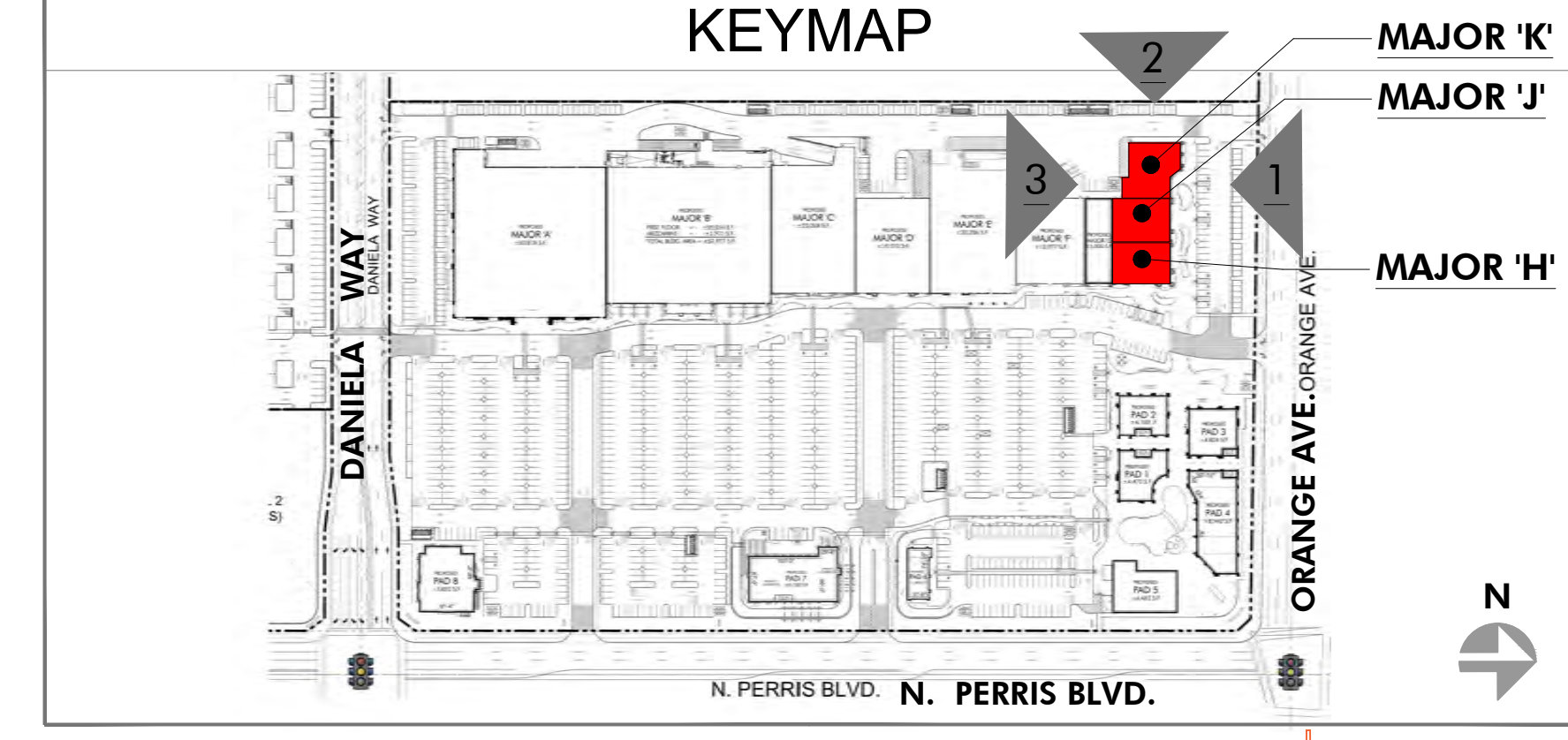


3 SOUTH ELEVATION - MAJOR 'K'
SCALE: 3/32" = 1'-0"



2 PORTION OF WEST ELEVATION - MAJOR 'K'
SCALE: 3/32" = 1'-0"

FINISH LEGEND			
KEY	MATERIAL	KEY	MATERIAL
23	TRASH RECEPTACLES MANUFACTURER: VICTOR STANLEY MODEL: SDC-36 COLOR: BLACK	1	STUCCO - SMOOTH MANUFACTURER: HIGHLAND STUCCO FINISH: STEEL TROWEL - PAINTED DUNN EDWARDS
24	BIKE RACKS MANUFACTURER: VICTOR STANLEY MODEL: FREESIA BIKE RACK COLOR: BLACK	2	STOREFRONT MANUFACTURER: ARCADIA - COLOR: #85 DARK BRONZE AB-7 STOREFRONT GLASS VITRO ARCH. GLASS - 1" CLEAR FLOAT GLASS
25	METAL AWNING MANUFACTURER: METAL SALES MODEL: MAGNA-LOC 180 COLOR: MISTIQUE PLUS (W31)	2A	SPANDREL GLASS VITRO ARCH. GLASS AV933 WARM GRAY #2
26	CONCRETE PAVERS MANUFACTURER: ACKERSTONE MODEL: 4x16 - NO CHAMFER, RUNNING BOND COLOR: BELLASINA BLEND	3	BRICK VENEER MANUFACTURER: INTERSTATE BRICK MODEL: THIN MODULAR 2 1/8 COLOR: ARCTIC WHITE GROUT COLOR: #381 BRIGHT WHITE BY CUSTOMS BUILDING PRODUCT
27	CONCRETE PAVING MANUFACTURER: BY GENERAL CONTRACTOR FINISH: ACID WASH FINISH, SAW CUT LINES. COLOR: NATURAL GRAY	4	BATTEN BOARD SIDING MANUFACTURER: HARDIE BOARD MODEL: HARDIE PLANK SMOOTH VERTICAL PANELS (10' x 4' x 5/8") W/ TRIM BOARDS (1" x 3.5") COLOR: PRIMED AND PAINTED W/ 2-COATS FLAT ACRYLIC LATEX - EGGSHELL BY DUNN EDWARDS BATTEN SPACING AT 12" CENTER TO CENTER.
28	GREENSCREEN MANUFACTURER: GREENSCREEN COLOR: MATTE TEXTURE GREEN	5	STANDING SEAM METAL ROOF MANUFACTURER: METAL SALES MODEL: MAGNA-LOC 180 COLOR: SLATE GRAY (W38)
29	PATIO FURNITURE MANUFACTURER: EMU CONTRACT SEGO #288 - ARM CHAIR, 22 A/ IRON CANTO #R02 MESH TABLE - 36" SQ. 22 A/ IRON UMBRELLA - ALUMINUM SQUARE (118" x 118") COLOR: CANOPY BEIGE STEEL BASE (24" SQ.) SILVER	6	METAL WALL PANELS MANUFACTURER: METAL SALES MODEL: EM1 - 1653 WALL PANEL COLOR: SLATE GRAY (W38)
30	STRING LIGHTS MANUFACTURER: TIVOLI LIGHTING MODEL: LITESPHERE LED, 3000K USE 3/8" STEEL CABLE WIRE (BY OTHERS) COLOR: CLEAR	7	STONE VENEER MANUFACTURER: ELDORADO STONE MODEL: ROUGHOUT COLOR: VINEYARD TRAIL
31	WALL LIGHT - LOADING AREAS MANUFACTURER: KIM LIGHTING MODEL: W35 WALL DIRECTOR (SMALL) - DOWN COLOR: BLT - BLACK MATTE TEXTURE	8	SIDING MANUFACTURER: HARDIE BOARD MODEL: ARTISAN SQUARE CHANNEL COLOR: PRIMED TO PAINT
33	COMPOSITE SIDING MANUFACTURER: AZEK MODEL: OPEN JOINT CLADDING COLOR: WEATHERED TEAK	9	METAL CANOPY MANUFACTURER: BY GENERAL CONTRACTOR FINISH: PAINTED COLOR: DE 6385 BLACK BEAN - SEMI GLOSS BY DUNN EDWARDS
34	CMU BLOCK MANUFACTURER: ORCO BLOCK MODEL: SPLIT FACE BLOCK COLOR: NATURAL GRAY	10	DICKS SPORTING GOODS METAL FRAME FACADE COLOR: DE 690 WOODY BLUES - SEMI GLOSS BY DUNN EDWARDS
35	CMU BLOCK MANUFACTURER: ORCO BLOCK MODEL: SPLIT FACE BLOCK COLOR: BLACK 100	11	METAL TRELLIS, POST & STEEL FRAMING MANUFACTURER: BY GENERAL CONTRACTOR FINISH: PAINTED COLOR: DE 6385 BLACK BEAN - SEMI GLOSS BY DUNN EDWARDS
36	WOOD BEAM HEADER WOOD VENEER BEAM FINISH: SEMI-TRANSPARENT STAIN COLOR COLOR: RUSTIC CEDAR	12	PRECAST CONCRETE BASE MANUFACTURER: EMPIRE PRECAST FINISH: SANDSTONE COLOR: NATURAL GRAY
37	ENTRY DRIVE PAVERS MANUFACTURER: ACKERSTONE MODEL: PALERMO COLOR: ANTIQUE PEWTER	13	WOOD EAVES / FASCIA MANUFACTURER: BY GENERAL CONTRACTOR OLYMPIC COLOR: BUTTERNUT SOLID COLOR WATERPROOFING STAIN / SEALER
38	METAL TRELLIS SHADE OR EQUAL MANUFACTURER: FX SHADE - RETRACTABLE COLOR: WHITE	14	WALL LOUVERS MANUFACTURER: ARCHITECTURE WALL LOUVERS MODEL: 4" STANDARD BLADE COLOR: DE 6385 BLACK BEAN - SEMI GLOSS BY DUNN EDWARDS
39	STANDING SEAM COVERED PATIO W/ METAL FRAME MANUFACTURER: METAL SALES MODEL: MAGNA-LOC 180 COLOR: SLATE GRAY (W38)	15	METAL BRACKETS MANUFACTURER: BY GENERAL CONTRACTOR FINISH: PAINTED COLOR: DE 6385 BLACK BEAN - SEMI GLOSS BY DUNN EDWARDS
KEY PAINT COLORS			
-	PAINT COLOR: IGLOO DEW379 BY: DUNN EDWARDS	16	WALL SCIENCE MANUFACTURER: HESS MODEL: LED VILLAGE 375 WALL MOUNT COLOR: BLACK
A	PAINT COLOR: SILVERLINED DE6353 BY: DUNN EDWARDS	17	WALL SCIENCE MANUFACTURER: INTRIGUE LIGHTING LED MODEL: LARGE METRO COLOR: BLACK
B	PAINT COLOR: DRIFTING DEC770 BY: DUNN EDWARDS	18	WALL SCIENCE MANUFACTURER: INTRIGUE LIGHTING LED MODEL: EPIC COLOR: BLACK
C	PAINT COLOR: SMOKEY MOUNTAIN DE6388 BY: DUNN EDWARDS	19	WALL SCIENCE (SERVICE DOORS) MANUFACTURER: BEGA MODEL: 33 224 LED COLOR: BLACK
D	PAINT COLOR: BANK VAULT DE6383 BY: DUNN EDWARDS	20	PEDESTRIAN POLE LIGHT MANUFACTURER: INTRIGUE LIGHTING LED MODEL: ELEGANT, SIDE ARM SHEPHERDS CROOK MOUNT POLE: P3A SERIES 15' HIGH
E	PAINT COLOR: SILVER SETTING DE6359 BY: DUNN EDWARDS	21	SIGN LIGHTS MANUFACTURER: TMS LIGHTING MODEL: SIGN 18 LED COLOR: MATTE BLACK
F	PAINT COLOR: ALWAYS ALMOND BY: PPG 1099-1	22	TRELLIS LIGHTS MANUFACTURER: LIGHTWAY MODEL: PDSW-S-LED COLOR: SATIN BLACK
G	PAINT COLOR: JERICHO JADE BY: PPG1142-6		
H	PAINT COLOR: WEATHERED LEATHER DE6105 BY: DUNN EDWARDS		
J	PAINT COLOR: KILN DRIED DET692 BY: DUNN EDWARDS		
K	PAINT COLOR: HARTFORD GREEN BY: SHERWIN WILLIAMS		
L			



PRELIMINARY SUBJECT TO CHANGE

HIP So-Cal Properties LLC
2244 N. Pacific Street
Orange, CA 92865
TEL. (714) 637-3333

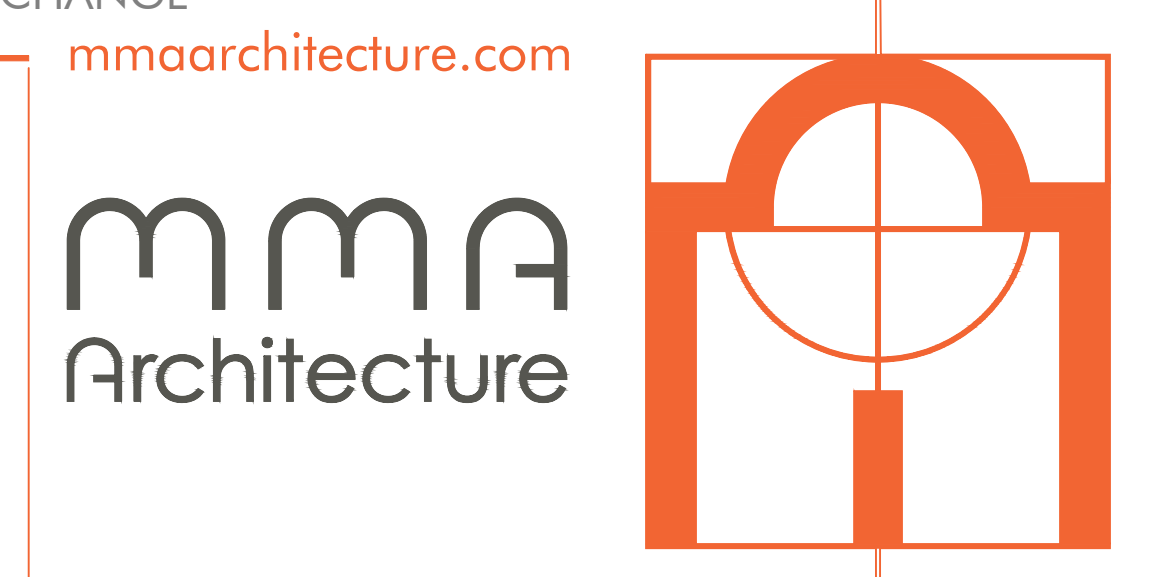
AZURE DEVELOPMENT CO.
944 South Greenwood Avenue
Montebello, CA 90640
TEL. (310) 467-7408

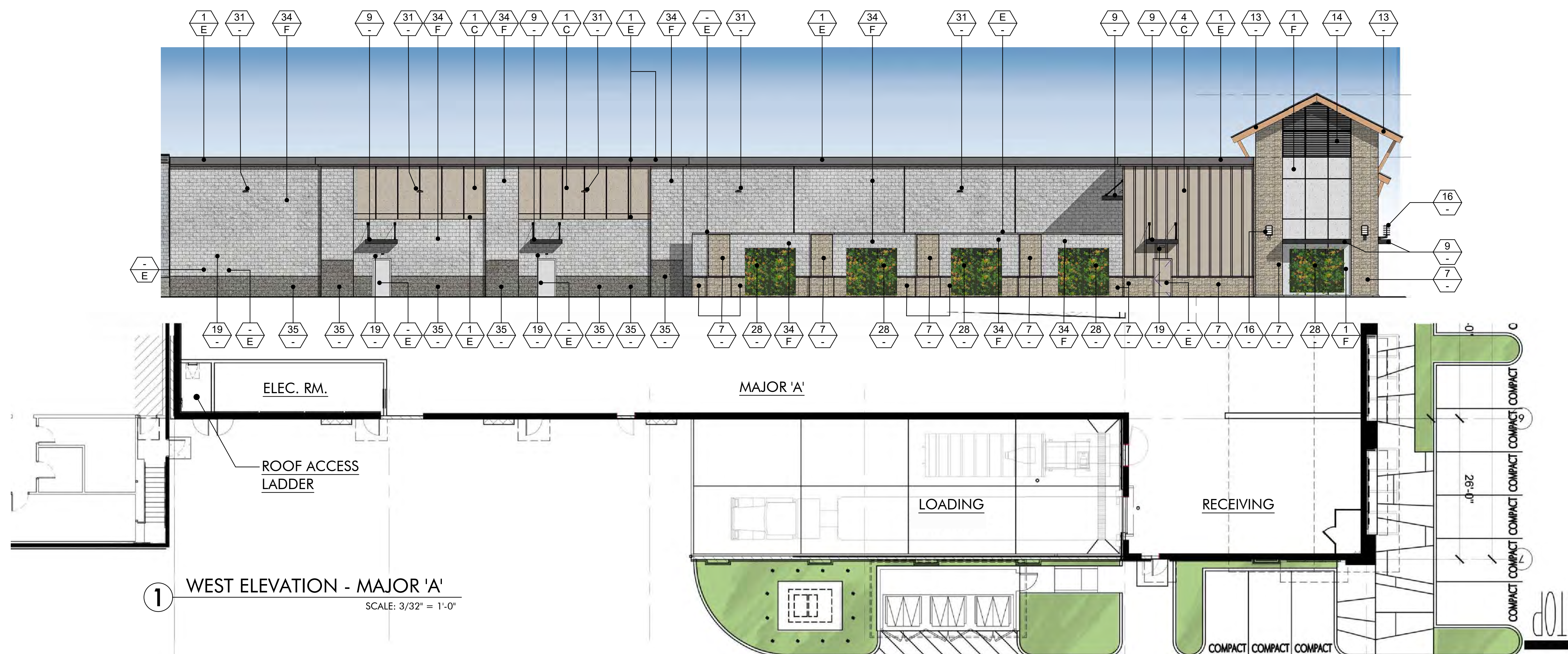


Harvest Landing Retail Center & Business Park
SWC Perris Blvd. & Orange Ave., Perris CA 92571

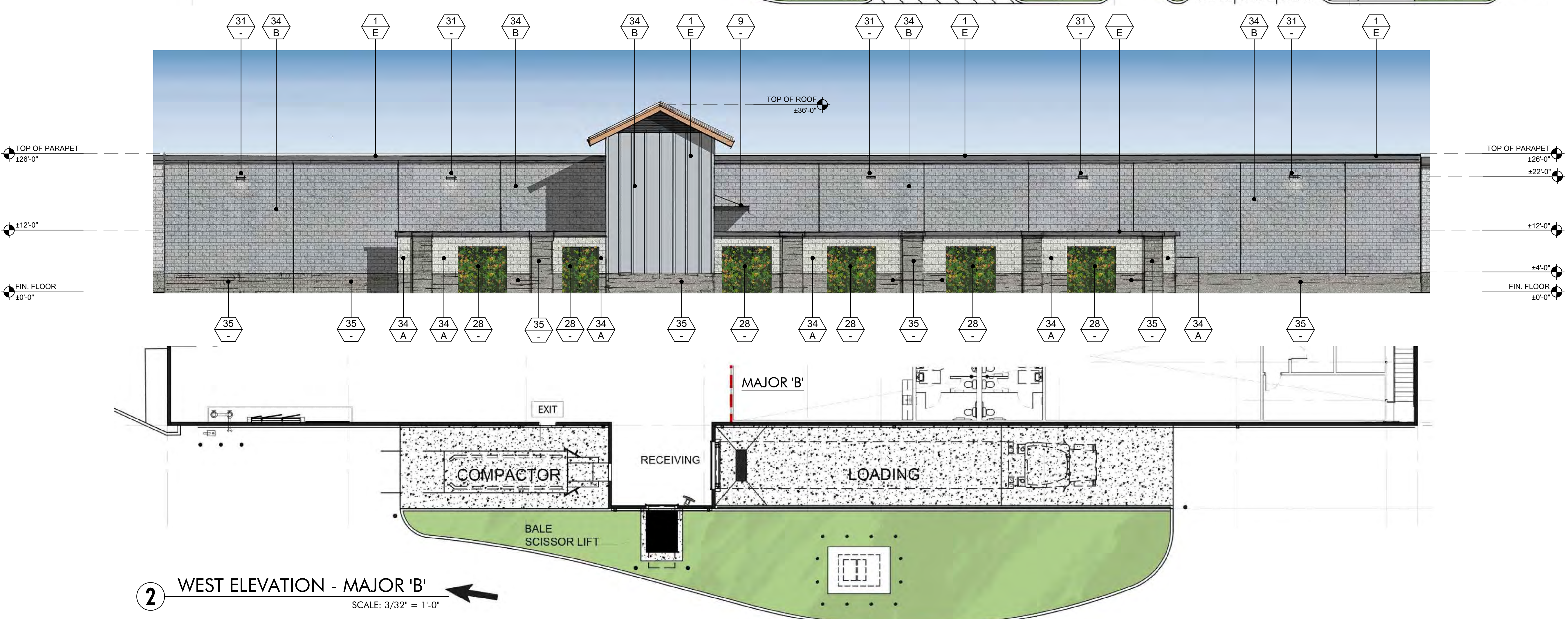
EXTERIOR ELEVATIONS
22161MMA | 08.07.2024

A204

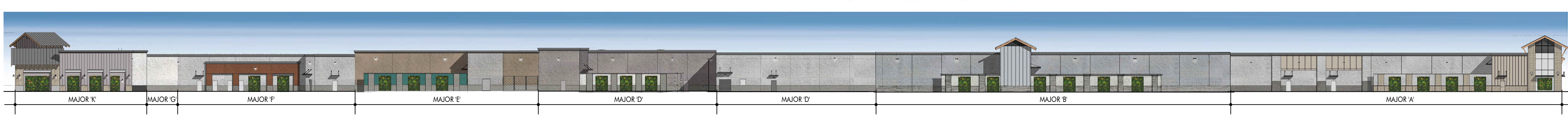




1 WEST ELEVATION - MAJOR 'A'
SCALE: 3/32" = 1'-0"



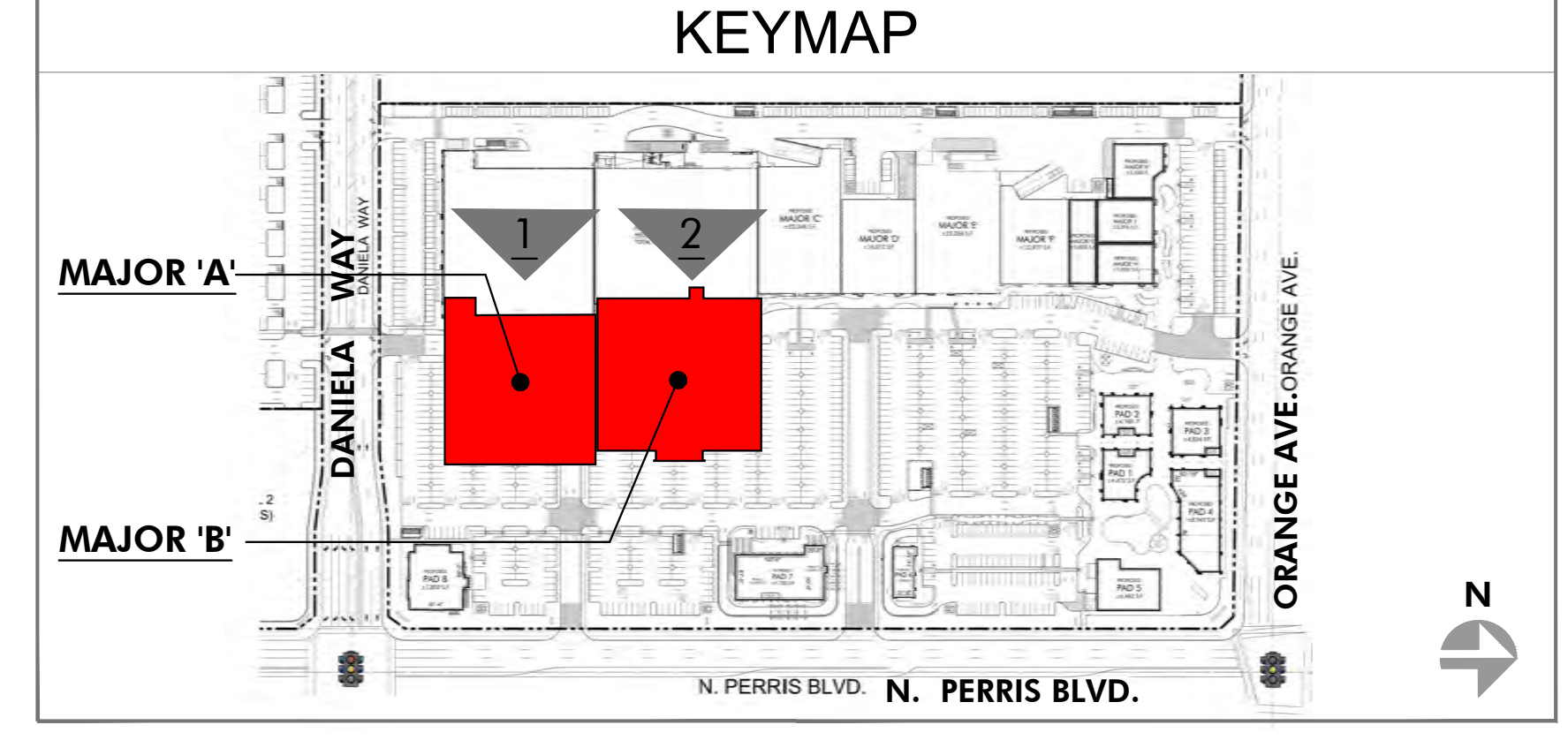
2 WEST ELEVATION - MAJOR 'B'
SCALE: 3/32" = 1'-0"



3 OVERALL WEST EXTERIOR ELEVATION
SCALE: 1" = 30'-0"

- 23 TRASH RECEPTACLES
MANUFACTURER: VICTOR STANLEY
MODEL: SDC-36
COLOR: BLACK
- 24 BIKE RACKS
MANUFACTURER: VICTOR STANLEY
MODEL: FREESIA BIKE RACK
COLOR: BLACK
- 25 METAL AWNING
MANUFACTURER: METAL SALES
MODEL: MAGNA-LOC 180
COLOR: MISTIQUE PLUS (W31)
- 26 CONCRETE PAVERS
MANUFACTURER: ACKERSTONE
MODEL: 4x16 - NO CHAMFER, RUNNING BOND
COLOR: BELLASINA BLEND
- 27 CONCRETE PAVING
MANUFACTURER: BY GENERAL CONTRACTOR
FINISH: ACID WASH FINISH, SAW CUT LINES.
COLOR: NATURAL GRAY
- 28 GREENSCREEN
MANUFACTURER: GREENSCREEN
COLOR: MATTE TEXTURE GREEN
- 29 PATIO FURNITURE
MANUFACTURER: EMU CONTRACT
SEGO #829 - ARM CHAIR, 22 A/ IRON
CAMBI #802 MESH TABLE - 36" SQ., 22 A/ IRON
UMBRELLA - ALUMINUM SQUARE (118" x 118")
COLOR: CANOPY BEIGE
STEEL BASE (24" SQ.) SILVER
- 30 STRING LIGHTS
MANUFACTURER: TIVOLI LIGHTING
MODEL: LITESPHERE LED, 3000K
USE #12 STEEL CABLE WIRE (BY OTHERS)
COLOR: CLEAR
- 31 WALL LIGHT - LOADING AREAS
MANUFACTURER: KIM LIGHTING
MODEL: WDS (WALL DIRECTOR SMALL) - DOWN
COLOR: BLT - BLACK MATTE TEXTURE
- 33 COMPOSITE SIDING
MANUFACTURER: AZEK
MODEL: OPEN JOINT CLADDING
COLOR: WEATHERED TEAK
- 34 CMU BLOCK
MANUFACTURER: ORCO BLOCK
MODEL: SPLIT FACE BLOCK
COLOR: NATURAL GRAY
- 35 CMU BLOCK
MANUFACTURER: ORCO BLOCK
MODEL: SPLIT FACE BLOCK
COLOR: BLACK 100
- 36 WOOD BEAM HEADER
WOOD VENEER BEAM
FINISH: SEMI-TRANSPARENT STAIN COLOR
COLOR: RUSTIC CEDAR
- 37 ENTRY DRIVE PAVERS
MANUFACTURER: ACKERSTONE
MODEL: PALERMO
COLOR: ANTIQUE PEWTER
- 38 MANUFACTURER: FX SHADE OR EQUAL
MODEL: TRELIS SHADE - RETRACTABLE
COLOR: WHITE
- 39 STANDING SEAM COVERED PATIO W/ METAL FRAME
MANUFACTURER: METAL SALES
MODEL: MAGNA-LOC 180
COLOR: SLATE GRAY (W38)
- 1 STUCCO - SMOOTH
MANUFACTURER: HIGHLAND STUCCO
FINISH: STEEL TROWEL - PAINTED
DUNN EDWARDS
- 2 STOREFRONT
MANUFACTURER: ARCADIA -
COLOR: #85 DARK BRONZE AB-7
STOREFRONT GLASS
VITRO ARCH GLASS - 1" CLEAR FLOAT GLASS
- 2A SPANDREL GLASS
VITRO ARCH GLASS AV333 WARM GRAY #2
- 3 BRICK VENEER
MANUFACTURER: INTERSTATE BRICK
MODEL: THIN MODULAR 2 1/2 x 8
COLOR: ARCTIC WHITE
GROUT COLOR: #381 BRIGHT WHITE
BY CUSTOMS BUILDING PRODUCT
- 4 BATTEN BOARD SIDING
MANUFACTURER: HARDIE BOARD
MODEL: HARDIE PLANK SMOOTH VERTICAL PANELS
(10' x 4' x 1/2") W/ TRIM BOARDS (1" x 3.5")
COLOR: PRIMED AND PAINTED W/ 2-COATS FLAT
ACRYLIC LATEX - EGGSHELL
BY DUNN EDWARDS
BATTEN SPACING AT 12" CENTER TO CENTER.
- 5 STANDING SEAM METAL ROOF
MANUFACTURER: METAL SALES
MODEL: MAGNA-LOC 180
COLOR: SLATE GRAY (W38)
- 6 METAL WALL PANELS
MANUFACTURER: METAL SALES
MODEL: EM1 - 1653 WALL PANEL
COLOR: SLATE GRAY (W38)
- 7 STONE VENEER
MANUFACTURER: ELDERADO STONE
MODEL: ROUGH CUT
COLOR: VINEYARD TRAIL
- 8 SIDING
MANUFACTURER: HARDIE BOARD
MODEL: ARTISAN SQUARE CHANNEL
COLOR: PRIMED TO PAINT
- 9 METAL CANOPY
MANUFACTURER: BY GENERAL CONTRACTOR
FINISH: PAINTED
COLOR: DE 6385 BLACK BEAN - SEMI GLOSS
BY DUNN EDWARDS
- 10 DICKS SPORTING GOODS
METAL FRAME FACADE
COLOR: DET 590 MOODY BLUES - SEMI GLOSS
BY DUNN EDWARDS
- 11 METAL TRELIS, POST & STEEL FRAMING
MANUFACTURER: BY GENERAL CONTRACTOR
FINISH: PAINTED
COLOR: DE 6385 BLACK BEAN - SEMI GLOSS
BY DUNN EDWARDS
- 12 PRECAST CONCRETE BASE
MANUFACTURER: EMPIRE PRECAST
FINISH: GANGETONE
COLOR: NATURAL GRAY
- 13 WOOD EAVES / FASCIA
MANUFACTURER: BY GENERAL CONTRACTOR
- 14 OLYMPIC
COLOR: BUTTERNUT
SOLID COLOR WATERPROOFING STAIN / SEALER
- 15 WALL LOUVERS
MANUFACTURER: ARCHITECTURE WALL LOUVERS
MODEL: #1 STANDARD BLADE
COLOR: DE 6385 BLACK BEAN - SEMI GLOSS
BY DUNN EDWARDS
- 16 METAL BRACKETS
MANUFACTURER: BY GENERAL CONTRACTOR
FINISH: PAINTED
COLOR: DE 6385 BLACK BEAN - SEMI GLOSS
BY DUNN EDWARDS
- 17 WALL SCONCE
MANUFACTURER: HESS
MODEL: LED VILLAGE 375 WALL MOUNT
COLOR: BLACK
- 18 WALL SCONCE
MANUFACTURER: INTRIGUE LIGHTING LED
MODEL: LARGE METRO
COLOR: BLACK
- 19 WALL SCONCE
MANUFACTURER: INTRIGUE LIGHTING LED
MODEL: EPIC
COLOR: BLACK
- 20 WALL SCONCE
(SERVICE DOORS)
MANUFACTURER: BEGA
MODEL: 33 224 LED
COLOR: BLACK
- 21 PEDESTRIAN POLE LIGHT
MANUFACTURER: INTRIGUE LIGHTING LED
MODEL: ELEGANT, SIDE ARM SHEPHERDS CROOK
MOUNT
POLE: PA3 SERIES 15' HIGH
- 22 SIGN LIGHTS
MANUFACTURER: TMS LIGHTING
MODEL: SIGN 18 LED
COLOR: MATTE BLACK
- 23 TRELIS LIGHTS
MANUFACTURER: LIGHTWAY
MODEL: POSW-S-LED
COLOR: SATIN BLACK

KEY	PAINT COLORS
-	PAINT COLOR: IGLOO DEW379 BY: DUNN EDWARDS
A	PAINT COLOR: SILVERLINED DE6353 BY: DUNN EDWARDS
B	PAINT COLOR: DRIFTING DEC770 BY: DUNN EDWARDS
C	PAINT COLOR: SMOKEY MOUNTAIN DE6388 BY: DUNN EDWARDS
D	PAINT COLOR: BANK VAULT DE6383 BY: DUNN EDWARDS
E	PAINT COLOR: SILVER SETTING DE6359 BY: DUNN EDWARDS
F	PAINT COLOR: ALWAYS ALMOND BY: PPG 1099-1
G	PAINT COLOR: JERICHO JADE BY: PPG1142-6
H	PAINT COLOR: WEATHERED LEATHER DE6105 BY: DUNN EDWARDS
I	PAINT COLOR: KILN DRIED DET692 BY: DUNN EDWARDS
J	PAINT COLOR: HARTFORD GREEN BY: SHERWIN WILLIAMS



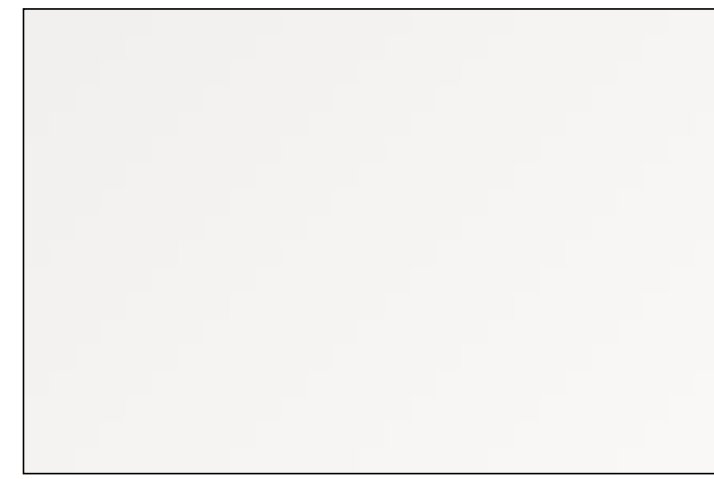
HIP So-Cal Properties LLC
2244 N. Pacific Street
Orange, CA 92865
TEL. (714) 637-3333

 AZURE DEVELOPMENT CO.
944 South Greenwood Avenue
Montebello, CA 90640
TEL. (310) 467-7408

 Harvest Landing Retail Center & Business Park
SWC Perris Blvd. & Orange Ave., Perris CA 92571

PRELIMINARY SUBJECT TO CHANGE
EXTERIOR ELEVATIONS
22161MMA | 08.07.2024
A205

 MMA
Architecture



A PAINT
COLOR: DEW 379 IGLOO
BY: DUNN EDWARDS



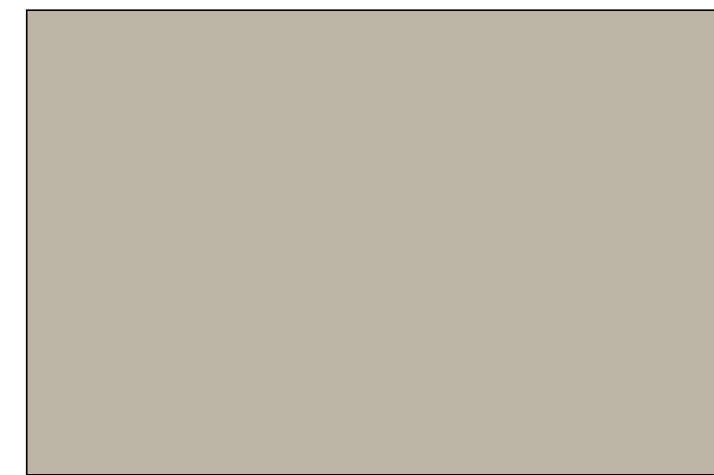
F PAINT
COLOR: DE6350 SILVER SETTING
BY: DUNN EDWARDS



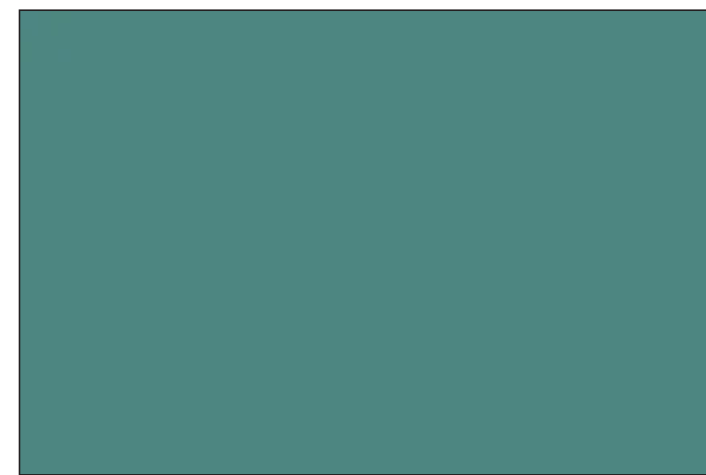
B PAINT
COLOR: DE6353 SILVER LINED
BY: DUNN EDWARDS



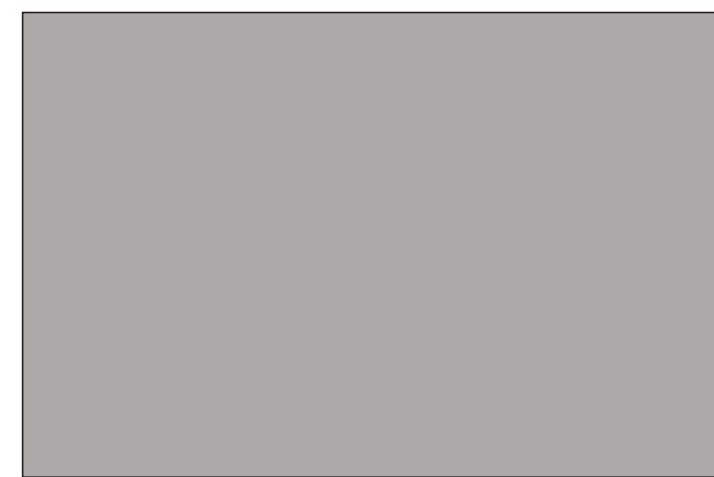
G PAINT
COLOR: PPG 1099-1 ALWAYS ALMOND
BY: PPG Industries



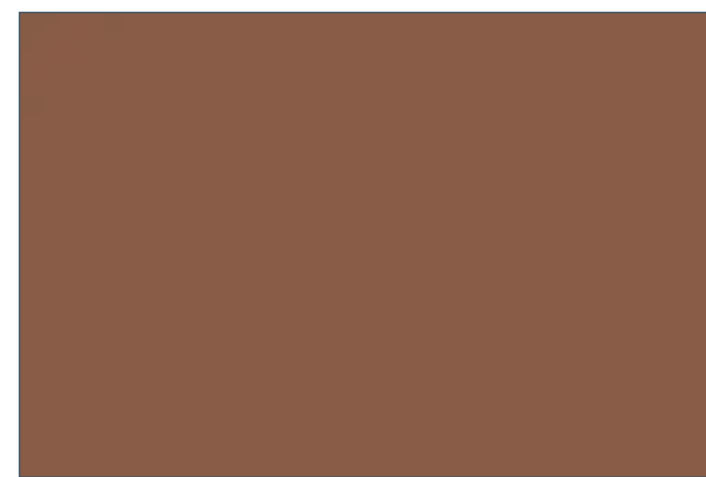
C PAINT
COLOR: DEC770 DRIFTING
BY: DUNN EDWARDS



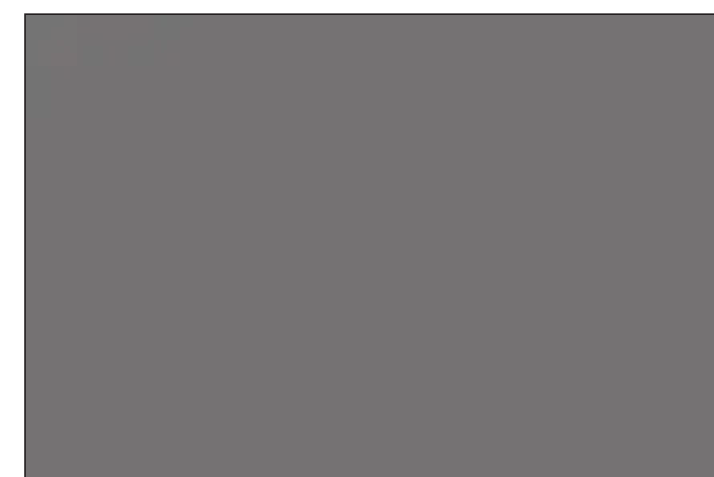
H PAINT
COLOR: 1142-6 JERICHO JADE
BY: PPG



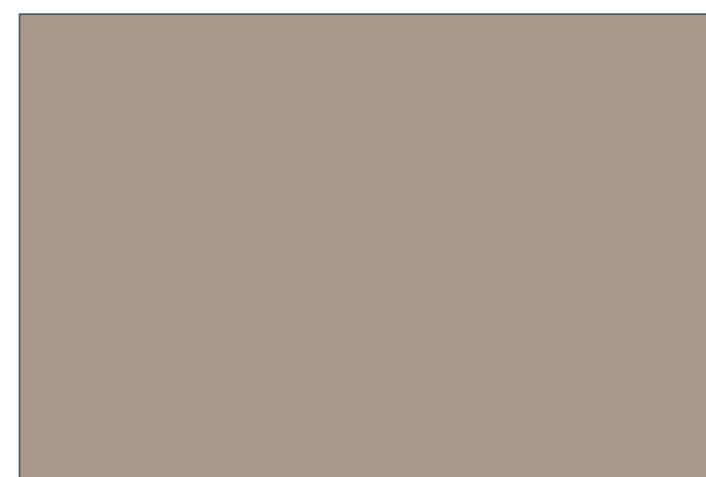
D PAINT
COLOR: DE 6386 SMOKY MOUNTAIN
BY: DUNN EDWARDS



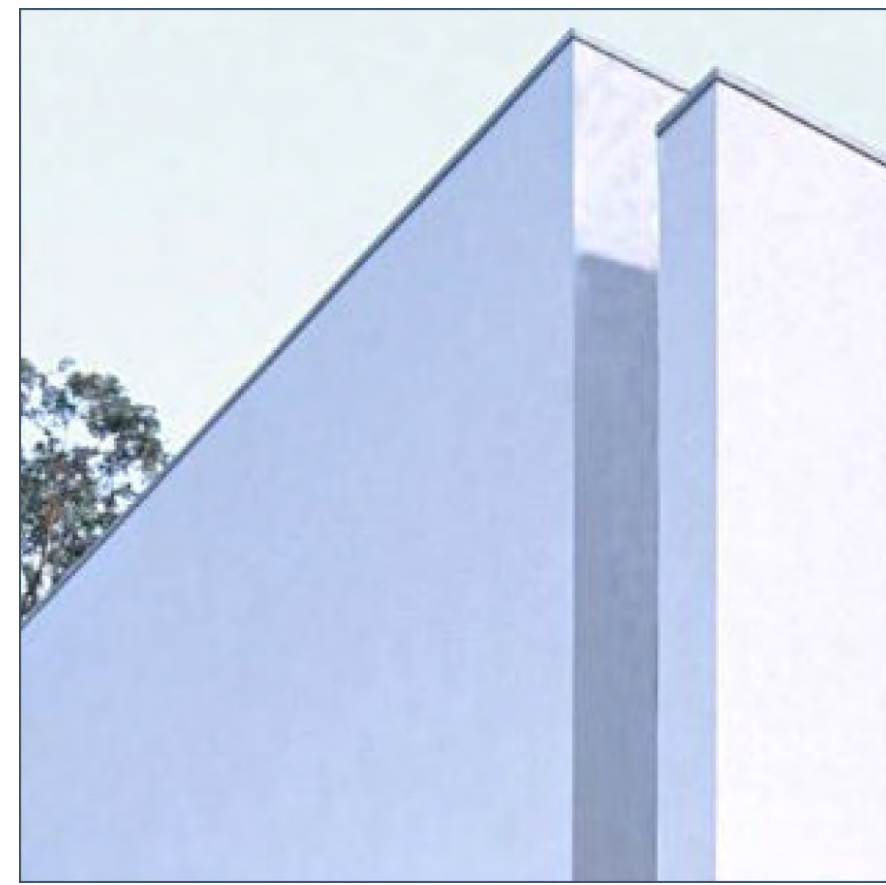
J PAINT
COLOR: DE 6105 WEATHERED LEATHER
BY: DUNN EDWARDS



E PAINT
COLOR: DE 6383 BANK VAULT
BY: DUNN EDWARDS



K PAINT
COLOR: DET 692 KILN DRIED
BY: DUNN EDWARDS



1 Stucco - Smooth
Steel Trowel - Painted
Manufacturer: Highland Stucco
A. Igloo DEW379 Dunn Edwards



2 Storefront
Storefront Glass
Manufacturer: Arcadia - Color #85 Dark Bronze
AB-7 Vitro Arch. Glass - 1" Clear Float Glass



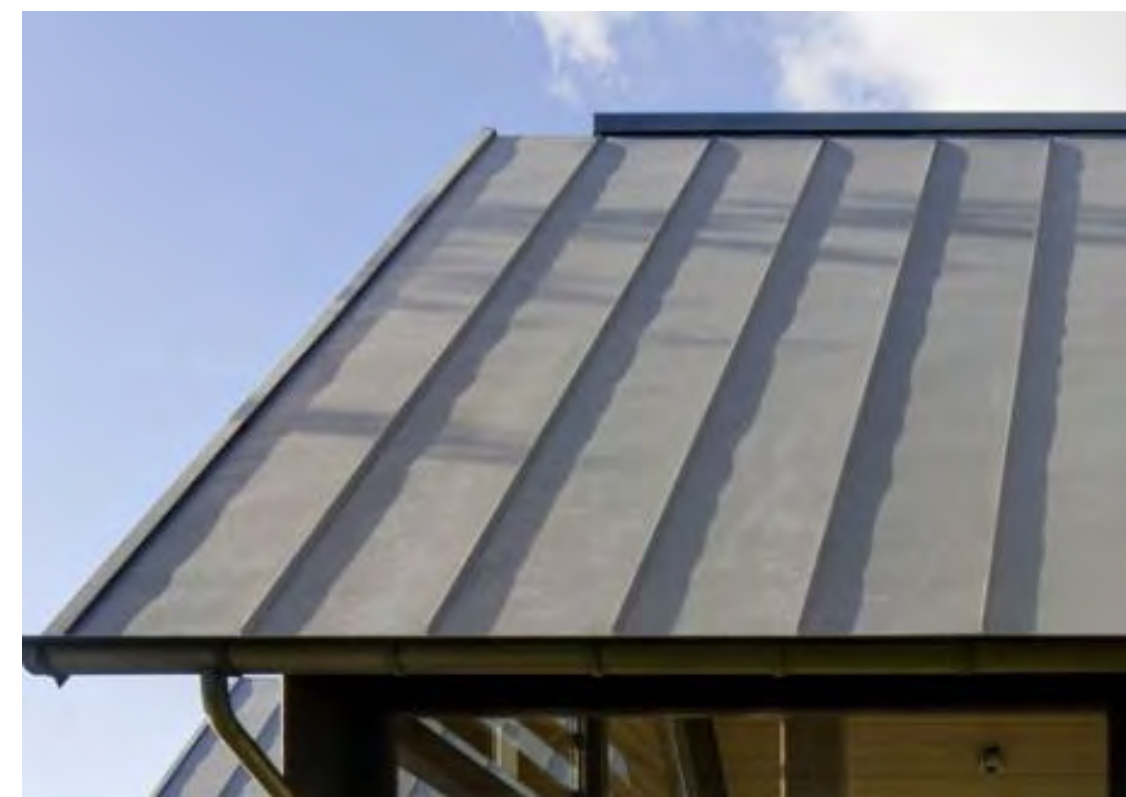
2A Spandrel Glass
Vitro Arch. Glass AV933 Warm Grey #2



3 Brick Veneer
Manufacturer: Interstate Brick
Model: Thin Modular 21/4 x 8
Color: Arctic White
#381 Bright White By Customs Build'g Product



4 Batten Board Siding
Manufacturer: Hardie Board
Model: Hardie Plank Smooth Vertical Panels
(10"x4"x5/16") w/ Trim Boards (1"x3.5")
Color: Primed and Painted w/ 2-Coats Flat
Acrylic Latex - Eggshell
By Dunn Edwards
Batten Spacing at 12" Center to Center.



5 Standing Seam Metal
Roof
Manufacturer: Metal Sales
Model: Magna-Loc 180
Color: Slate Gray (W38)



6 Metal Wall Panels
Manufacturer: Metal Sales
Model: EM1-1653 Wall Panel
Color: Slate Gray (W38)



7 STONE VENEER
Model: Vineyard Trail Nationwide
Color: Blonds, Russel, & Cool Grays
By: EL DORADO STONE



8 Siding
Manufacturer: Hardie Board
Model: Artisan Square Channel
Color: Primed to Paint



9 Metal Canopy
Manufacturer: By General Contractor
Finish: Painted
Color: DE 6385 Black Bean - Semi Gloss
By Dunn Edwards



10 Metal Slats
Manufacturer: By General Contractor
Finish: Painted
Color: DE 6385 Black Bean - Semi Gloss
By Dunn Edwards



11 Metal Trellis, Post &
Steel Framing
Manufacturer: By General Contractor
Finish: Painted
Color: DE 6385 Black Bean - Semi Gloss
By Dunn Edwards





12 Precast Concrete Base
 Manufacturer: Empire Precast
 Finish: Sandstone
 Color: Natural Gray



13 Wood Eaves / Fascia
 OLYMPIC
 Manufacturer: By General Contractor
 Finish: Smooth - Architectural Grade
 Color: Butternut
 Solid Color Waterproofing Stain / Sealer



14 Wall Louvers
 Manufacturer: Architecture Wall Louvers
 Model: 4" Standard Blade
 Color: DE 6385 Black Bean - Semi Gloss
 By Dunn Edwards



16 Wall Sconce
 Manufacturer: Hess
 Model: LED Village 375 Wall Mount
 Color: Black



17 Wall Sconce
 Manufacturer: Intrigue Lighting LED
 Model: Metro
 Color: Black



18 Wall Sconce
 Manufacturer: Intrigue Lighting LED
 Model: Metro
 Color: Black



19 Wall Sconce (Service Doors)
 Manufacturer: Bega
 Model: 33 224 LED
 Color: Black



20 Pedestrian Pole Light
 Manufacturer: Intrigue Lighting
 Model: Elegant, Side Arm Shepherds
 Crook Mount



21 Sign Lights
 Manufacturer: TMS Lighting
 Model: SIGN 18 LED
 Color: Matte Black



22 Trellis Lights
 Manufacturer: Lightway
 Model: PDSW-5-LED
 Color: Satin Black



23 Trash Receptacles
 Manufacturer: Victor Stanley
 Model: SDC-36
 Color: Black



24 Bike Racks
 Manufacturer: Victor Stanley
 Model: BRBS-103
 Color: Black



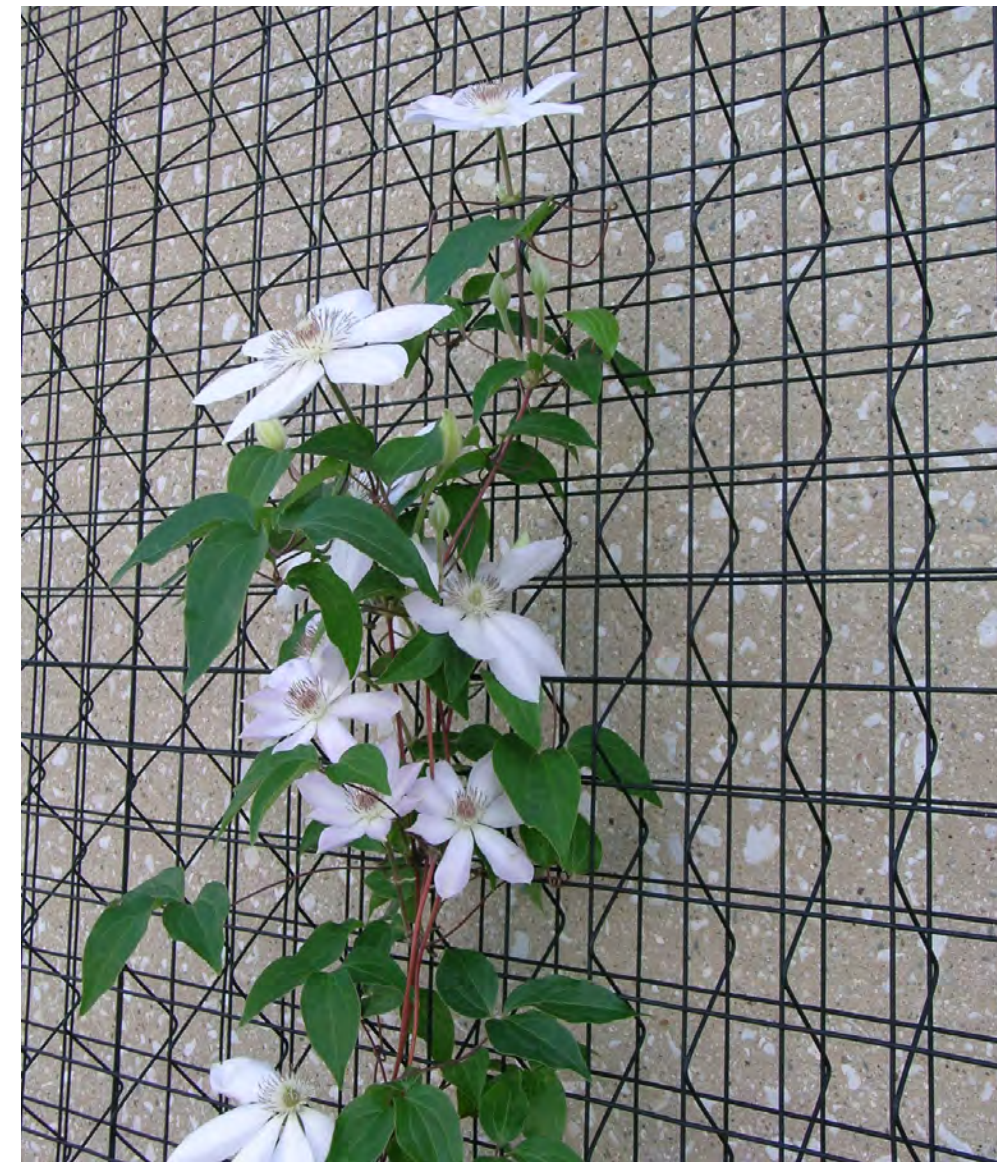
25 Metal Awning
 Manufacturer: Metal Sales
 Model: Magna-Loc 180
 Color: Mistique Plus (W31)



26 Concrete Pavers
 Manufacturer: Ackerstone
 Model: 4x16 - No Chamfer, Running Bond
 Color: Bellasina Blend

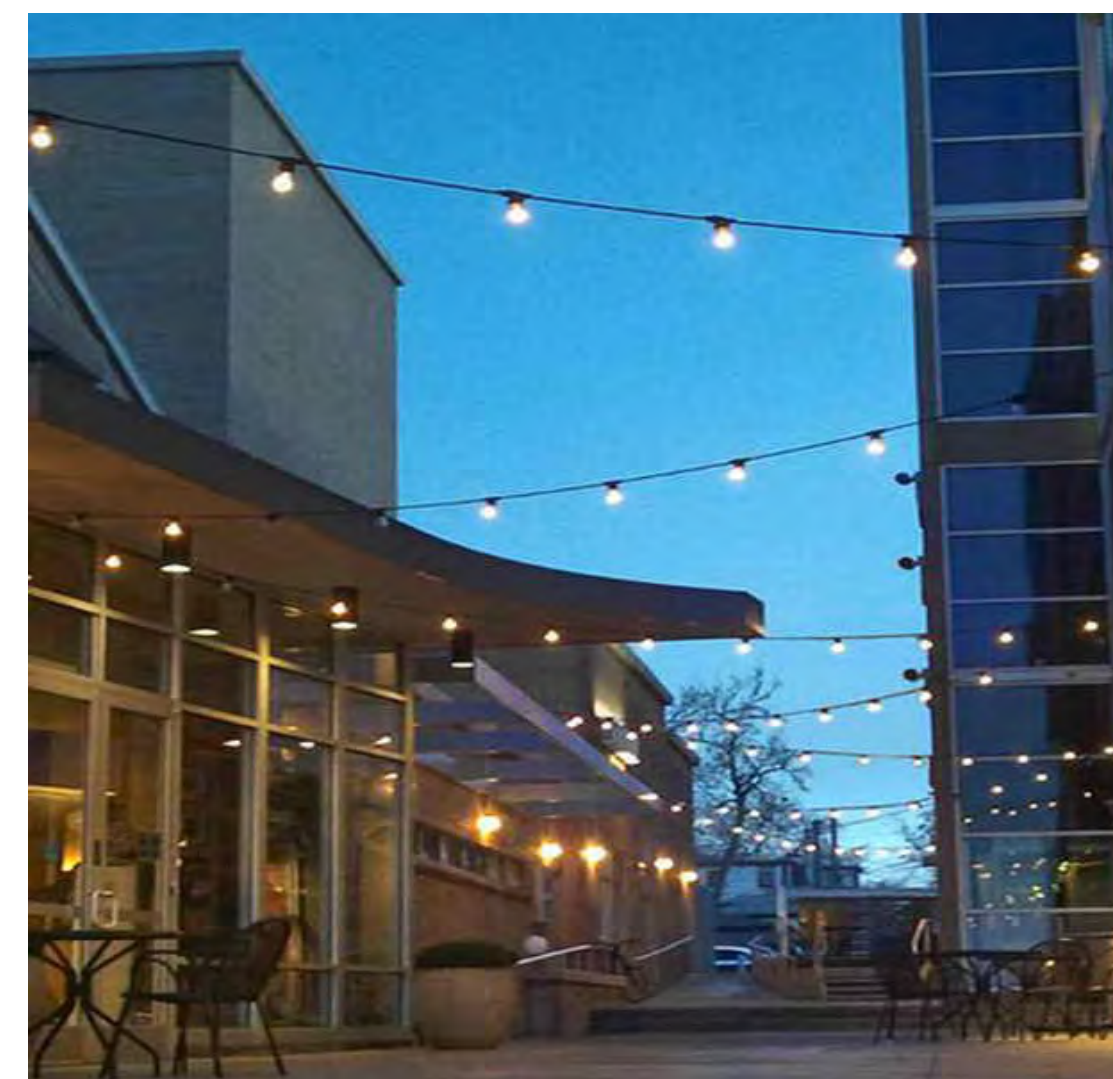


27 Concrete Paving
 Manufacturer: By General Contractor
 Finish: Acid Wash Finish, Saw Cut Lines
 Color: Natural Gray



28 Greenscreen
 Manufacturer: Greenscreen
 Color: Matte Texture Green

29 Patio Furniture
 Manufacturer: EMU C
 Segno # 268 - Arm Chair, 22 A/ Iron
 Cambi #802 Mesh Table - 36"Sq., 22 A/ Iron
 Umbrella - Aluminum Square (118"x118")
 Color: Canopy Beige
 Steel Base (24"sq.) Silver



30 Patio String Lights
 Manufacturer: Trivoli Lighting
 Model: Litesphere LED, 3000K
 Use 1/8" Steel Cable Wire (by others)
 Color: Clear



31 WALL LIGHTING (LOADING AREAS)
 Model: WDS (Wall Director Small)
 Color: BLT Black Matte Texture
 By: Kim Lighting



33 COMPOSITE SIDING
 Model: Open joint Cladding (Vintage Collection)
 Color: Weathered Teak
 By: Azek



35 CMU BLOCK
 Model: Precision Block
 Color: Painted
 By: Orco Block



35 CMU BLOCK
 Model: Split Face
 Color: Black 100
 By: Orco Block

