

CONCEPTUAL SITE PLAN
SCALE: 1"=150'

MULCH NOTE:
ALL EXPOSED LANDSCAPE AREAS, (EXCLUDING BASIN SLOPES), ARE TO BE COVERED WITH 3" LAYER OF WOOD MULCH AFTER ALL PLANTING AND IRRIGATION OPERATIONS ARE COMPLETE. MULCH SHALL NOT BE INSTALLED ON PLANTING AREAS THAT CONTAIN HYDRO-SEED MIX.

GENERAL NOTE:
UPON APPROVAL OF THIS CONCEPTUAL LANDSCAPE PLAN, FINALIZED PLANTING PLANS AND LANDSCAPE IRRIGATION PLANS WILL BE DRAFTED FOR BOTH ON-SITE AND OFF-SITE LANDSCAPE AREAS RESPECTIVELY AS SHOWN ON THESE SHEETS. AREAS SUBJECT TO CHANGE BASED ON FINAL NORTH ENTRY CONDITION.

LANDSCAPE AREA TABULATION - DPR

ACREAGE	TOTAL NET SITE AREA:	59.85 ACRES
BUILDING AREA	BUILDING 1 (WAREHOUSE)	795,109 SF
	BUILDING 2 (WAREHOUSE)	71,961 SF
TOTAL		867,070 SF
ON-SITE LANDSCAPE AREA REQUIRED:		260,083 SF
ON-SITE LANDSCAPE AREA PROVIDED:		767,708 SF
OFF-SITE LANDSCAPE AREA PROVIDED:		43,051 SF

PARKING LOT TREE TABULATION

BUILDING 1: PARKING STALLS PROVIDED: 350
BUILDING 2: PARKING STALLS PROVIDED: 125
TREES REQUIRED @ 1 TREE PER 6 STALLS = 79 TREES
TREES PROVIDED = 190 TREES

PARKING LOT TREE SIZE TABULATION

36" BOX TREES = 190 TREES

LANDSCAPE SHRUB/GROUNDCOVER PLANT MATERIAL SIZE TABULATION

REQUIRED 5 GALLON (80%) / 1 GALLON (20%)

PROVIDED:
SHRUB AND GC: 609,691 SF @ 5 GAL/(80%/1 GAL)/(20%)
BASIN SLOPES: 67,786 SF @ 5 GAL
STREETSCAPE PLANTING: 45,290 SF @ 5 GAL/(90%/1 GAL)/(10%)
HYDROSEED: 43,051 SF (N/A)

TOTAL: 596,299 SF @ 5 GAL
126,467 SF @ 1 GAL
722,766 SF TOTAL

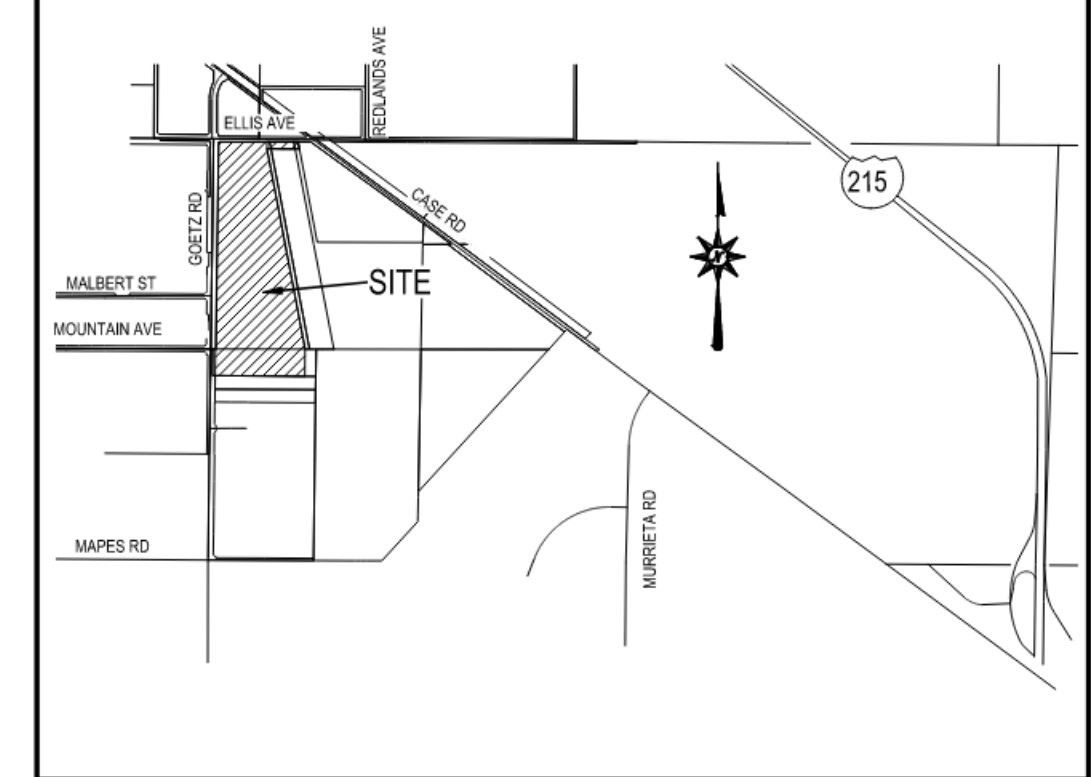
RIVERSIDE COUNTY ORDINANCE 859 LANDSCAPE WATER USE CALCULATIONS

PROJECT TYPE
Commercial
PERRIS AIRPORT LOGISTICS, PERRIS, CA - DPR

Applicant to use drop down menus in cells that indicate a selection to describe each hydrozone. Where "INPUT" is shown, applicant to enter project specific information. Please note that embedded formulas will reflect as "Value" or as an error until selections are completed.

1 MAXIMUM ANNUAL WATER ALLOWANCE (MAWA)	
INPUT the total square footage of landscape =	720,528 S.F.
INPUT the Hyd. E to for the area =	0.49
MAWA =	1,522,486 cu ft / yr
2 ESTIMATED ANNUAL WATER USE (EAWU)	
Hydrozone # 1: Trees	Plant Type: Tree / Mass Medium
INPUT Square Foot Area of Hydrozone =	6,016
Hydrozone Irrigation Efficiency = 0.85	Efficiency
EAWU =	15,617 cu ft / yr
Hydrozone # 2: Shrubs and Groundcover	Plant Type: Shrub / Groundcover Low
INPUT square footage of hydrozone =	600,691
Hydrozone Irrigation Efficiency = 0.90	Efficiency
EAWU =	154,296 cu ft / yr
Hydrozone # 3: Basin	Plant Type: Shrub / Groundcover Low
INPUT square footage of hydrozone =	110,837
Hydrozone Irrigation Efficiency = 0.75	Efficiency
EAWU =	208,176 cu ft / yr
Sub-Total EAWU =	1,170,081 cu ft / yr
Input Irrigation System Operation Factor =	0.95
Total EAWU =	1,387,154 cu ft / yr
MAWA - EAWU =	135,332 cu ft / yr
(this number must be positive)	
PERCENTAGE OF WATER SAVED RELATIVE TO MAX. ALLOWED = 9%	

* Trees are not required to be listed on a separate hydrozone if understory is planned with plants of an equal or higher plant factor, and foot area is already included in calculations.



OWNER/APPLICANT:
CH REALTY IX-MC | RIVERSIDE PERRIS AIRPORT CENTER, L.P.
18032 LEMON DRIVE, SUITE 367
YORBA LINDA, CA 92886
CONTACT: MICHAEL MASTERSON
PHONE: (714) 299-8549

ENGINEER/LANDSCAPE ARCHITECT:
ALBERT A. WEBB ASSOCIATES
3788 MCCRAY STREET
RIVERSIDE, CA 92506
CONTACT: SARAH KOWALSKI
PHONE: (951) 686-1070

ARCHITECT:
RGA OFFICE OF ARCHITECTURAL DESIGN, INC.
15231 ALTON PARKWAY, SUITE 100
IRVINE, CA 92618
CONTACT: MIKE GILL
PHONE: (949) 341-0920

ASSESSOR'S PARCEL NUMBER:
330-100-031, 330-090-033, 330-090-036
330-090-038, 330-090-040, 330-090-031

SOILS ENGINEER:
SOCAL GEOTECHNICAL
22885 SAVI RANCH PARKWAY #E
YORBA LINDA, CA 92887
CONTACT: JOSEPH LOZANO LEON
PHONE: (714) 685-1115
FAX: (714) 685-1118

SURVEYOR:
TOPOGRAPHY FLOWN BY INLAND AERIAL SURVEYS, INC.
ON 05/18/2021

ACREAGE:
R/W DEDICATION, GOETZ ROAD: 0.6 AC
R/W DEDICATION, ELLIS AVE: 1.9 AC
NET AREA: 59.9 AC
GROSS AREA: 62.4 AC

PROPERTY DESCRIPTION:
THIS PROPERTY SURVEYED AND SHOWN HEREON IS THE SAME PROPERTY AS DESCRIBED IN FIRST AMERICAN TITLE INSURANCE COMPANY PRELIMINARY REPORT NO. NCS-1064672-SD, DATED AS OF JUNE 25, 2021, UPDATED AND AMENDED JULY 6, 2021.

REAL PROPERTY IN THE CITY OF PERRIS, COUNTY OF RIVERSIDE, STATE OF CALIFORNIA, DESCRIBED AS FOLLOWS:

PARCEL 1:
PARCEL 1 AS SHOWN ON CERTIFICATE OF COMPLIANCE - LOT LINE ADJUSTMENT NO. 16-05251, AS EVIDENCED BY DOCUMENT RECORDED APRIL 07, 2017 AS INSTRUMENT NO. 2017-0140879 OF OFFICIAL RECORDS.

EXCEPTING THEREFROM THAT PORTION CONVEYED TO THE CITY OF PERRIS AS DESCRIBED IN A GRANT DEED RECORDED MAY 14, 2019 AS INSTRUMENT NO. 2019-0167315 OF OFFICIAL RECORDS.

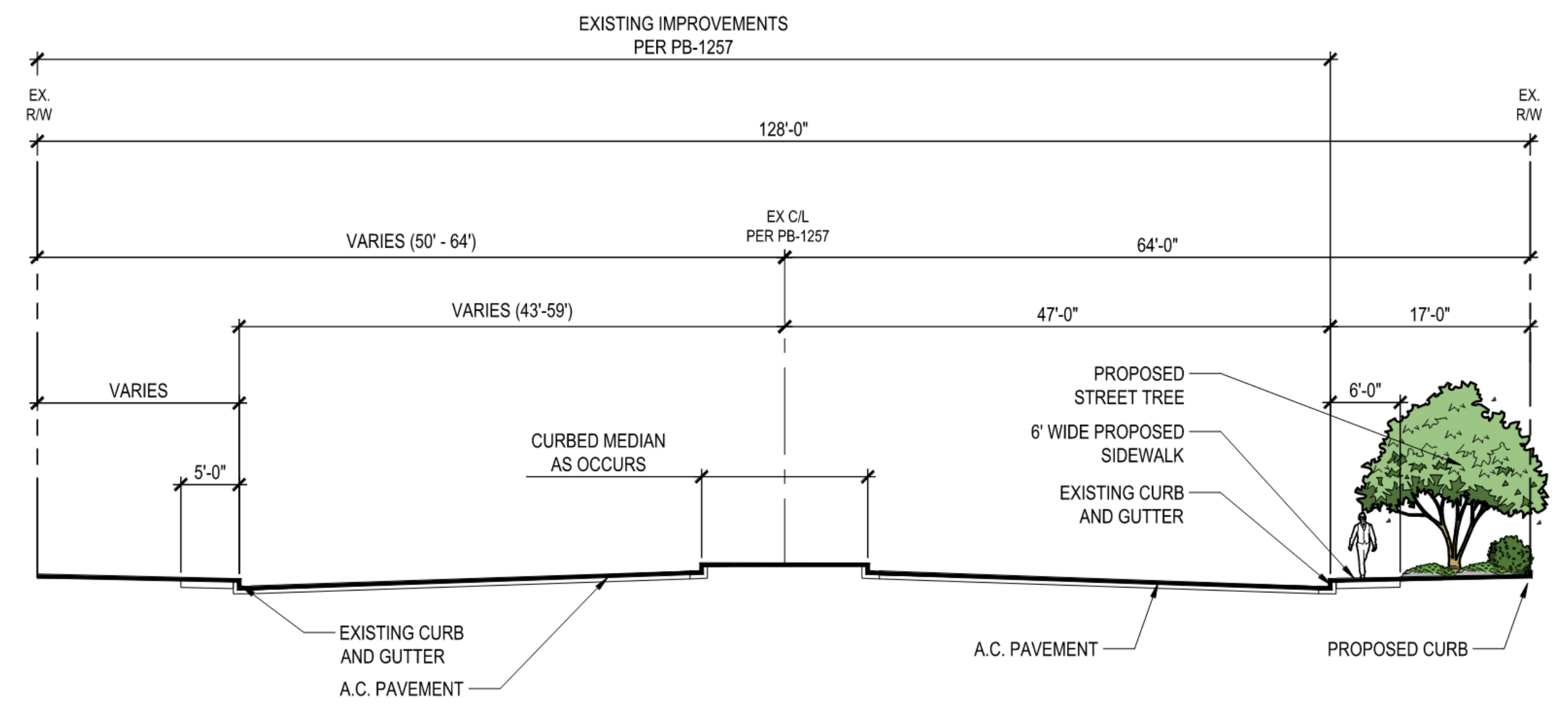
PARCEL 3:
AN EASEMENT AND RIGHT OF WAY TO CONSTRUCT, USE, MAINTAIN, OPERATE, ALTER, ADD TO, REPAIR, REPLACE, RECONSTRUCT, ENLARGE, IMPROVE, INSPECT, AND REMOVE, AND RELOCATE UNDERGROUND PIPELINES AND MAINS FOR UTILITIES, WATER, SEWER, GAS AND STORM SYSTEMS, AS SET FORTH IN THAT CERTAIN EASEMENT AGREEMENT BETWEEN PATRICK M. CONATSER, TRUSTEE OF THE PATRICK M. CONATSER IRREVOCABLE TRUST, DATED DECEMBER 28, 2021, AND MELANIE D. COATSER, TRUSTEE OF THE MELANIE D. COATSER IRREVOCABLE TRUST DATED DECEMBER 28, 2021 TO MIRA MESA PERRIS AIRPORT, L.L.C. DATED DECEMBER 28, 2021 AND RECORDED APRIL 10, 2017 AS INSTRUMENT NO. 2017-0141746 OF OFFICIAL RECORDS.

APN: 330-100-031
LOT 1 OF EHRMAN'S SUBDIVISION, CITY OF PERRIS, COUNTY OF RIVERSIDE, STATE OF CALIFORNIA, AS PER MAP RECORDED IN MAP BOOK II PAGE 544 RECORDS OF SAN DIEGO COUNTY, CALIFORNIA

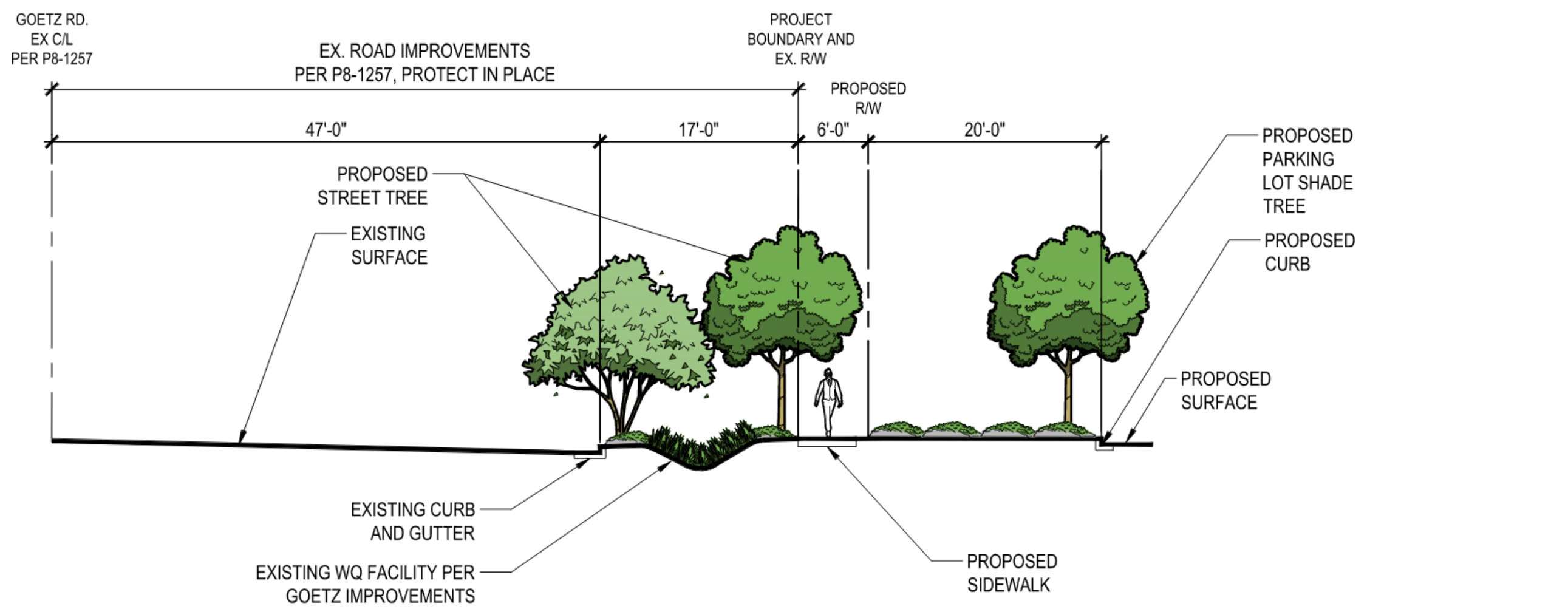
PROJECT DESCRIPTION:
EXISTING/PROPOSED GENERAL LAND USE: LIGHT INDUSTRIAL (LI)
EXISTING/PROPOSED ZONING: LIGHT INDUSTRIAL (LI)

BENEFIT ZONE QUANTITIES (OFF-SITE):

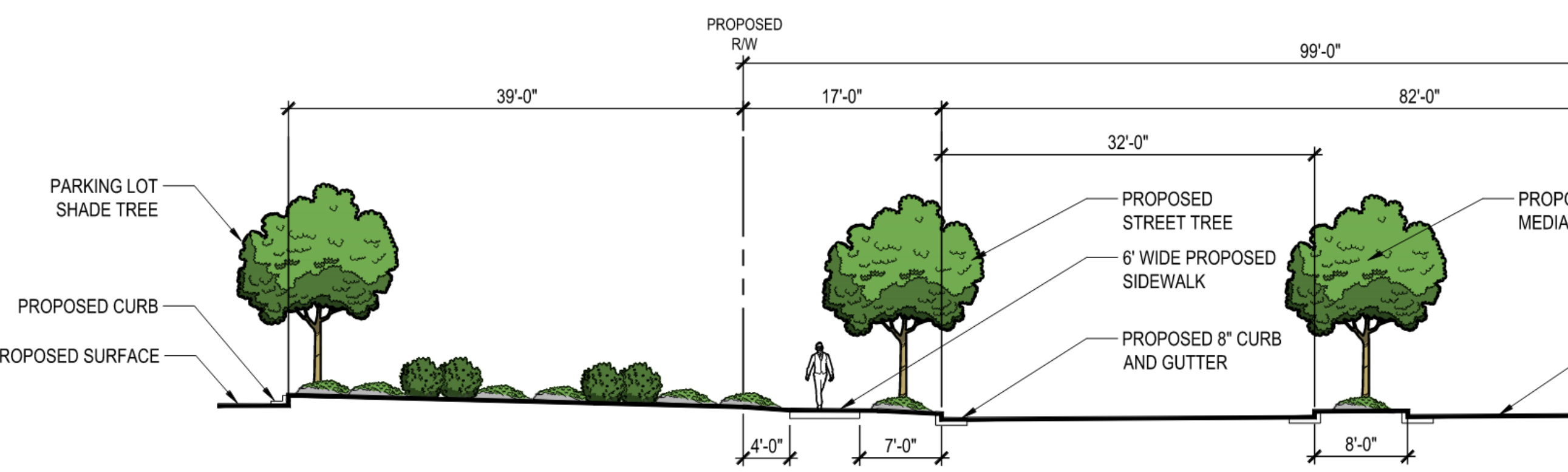
SHRUB AND GROUNDCOVER =	42,266 SF
TURF =	N/A
TREES =	130
HARDSCAPE =	151 SF (MORTARED COBBLE) 20,802 SF (SIDEWALK) 2145 SF (ENHANCED PAVING)



CONCEPTUAL SECTION: A1-A1: GOETZ ROAD
SCALE: 1"=10'



CONCEPTUAL SECTION: A2-A2: GOETZ ROAD
SCALE: 1"=10'

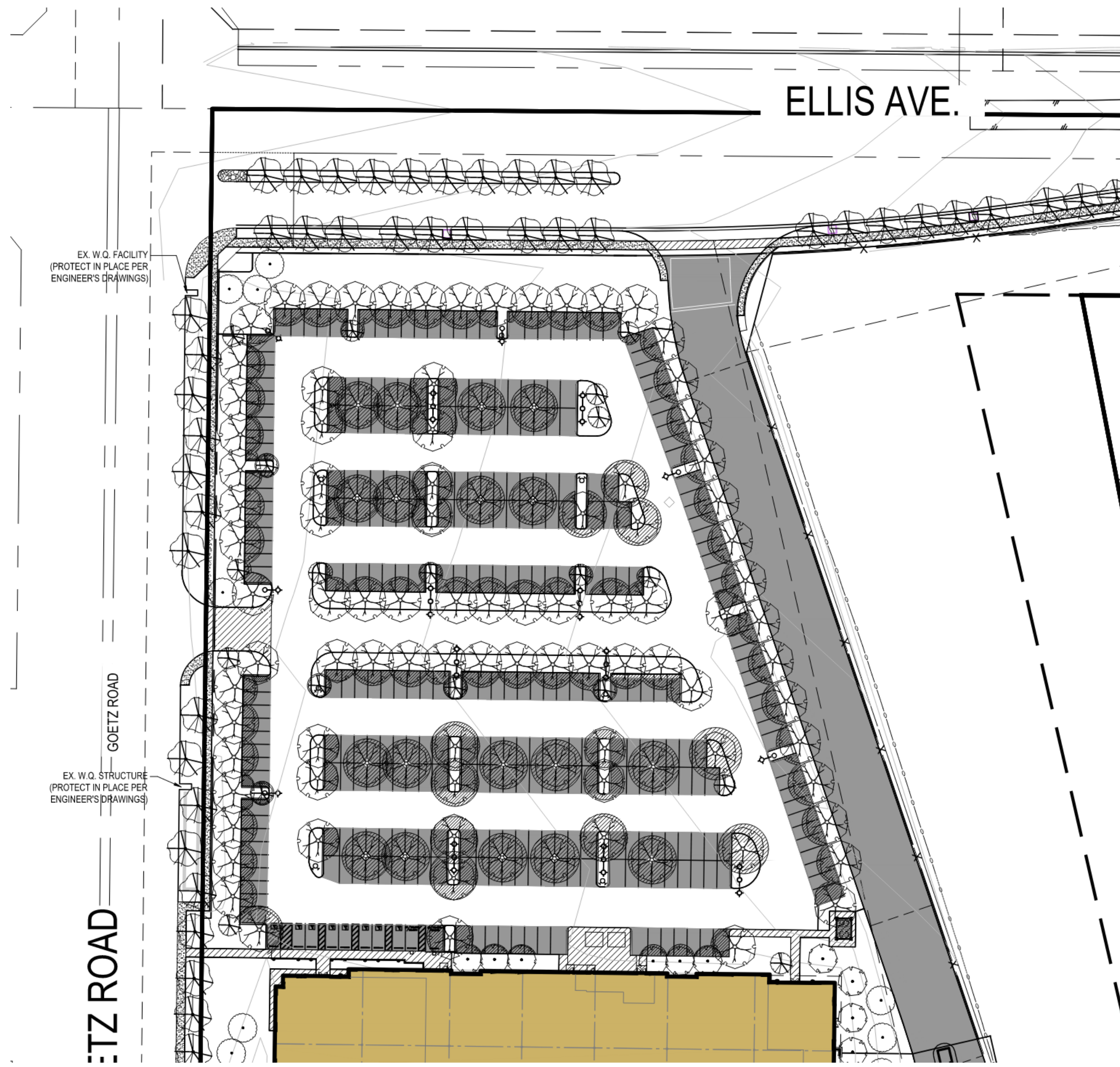


CONCEPTUAL SECTION: C-C: ELLIS AVE.
SCALE: 1"=10'



CLP-DPR-01

H:\2021\21-0235\DRAWINGS\PLAN SHEETS\21-0235 CLP.DWG 8/22/2023 5:13:58 PM Nicole



TREE SHADING LEGEND:

- 62,996 SF PARKING STALL AREA
- 42,708 SF SHADED PARKING AREA

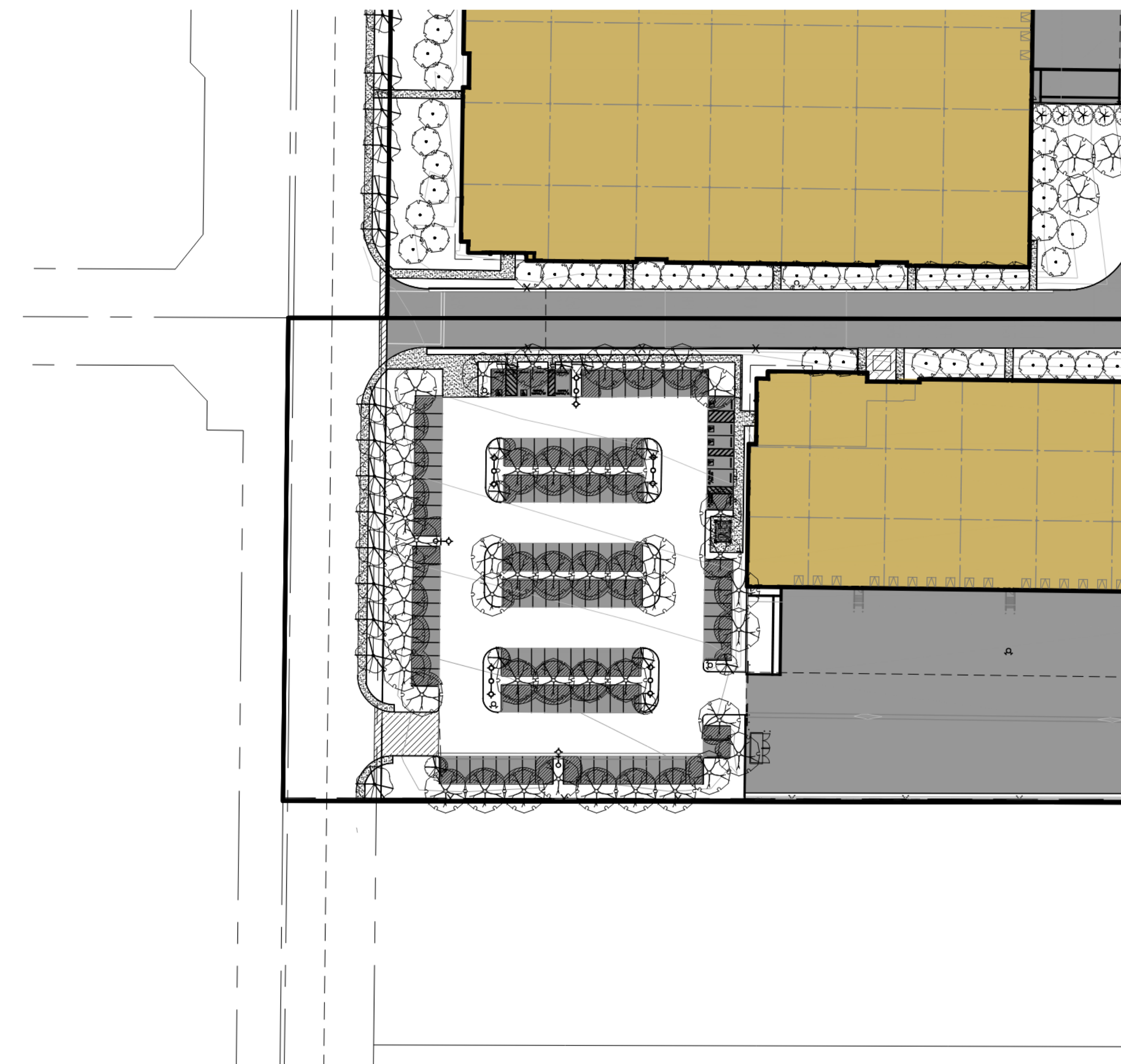
PERCENTAGE RATIO OF TOTAL SHADED PARKING AREA PROVIDED 67%
 MINIMUM PERCENTAGE RATIO OF TOTAL SHADED PARKING AREA REQUIRED 50%

GENERAL NOTES:
 TREE SIZES AREA SHOWN AT 15 YEARS MATURITY
 FOR PLANT LEGEND AND NOTES SEE CONCEPTUAL LANDSCAPE PLAN

CONCEPTUAL SHADING PLAN
 NORTH PARKING LOT



SCALE: 1"=60'



TREE SHADING LEGEND:

- 23,126 SF PARKING STALL AREA
- 14,144 SF SHADED PARKING AREA

PERCENTAGE RATIO OF TOTAL SHADED PARKING AREA PROVIDED 61%
 MINIMUM PERCENTAGE RATIO OF TOTAL SHADED PARKING AREA REQUIRED 50%

GENERAL NOTES:
 TREE SIZES AREA SHOWN AT 15 YEARS MATURITY
 FOR PLANT LEGEND AND NOTES SEE CONCEPTUAL LANDSCAPE PLAN

CONCEPTUAL SHADING PLAN
 SOUTH PARKING LOT



SCALE: 1"=60'



CLP-DPR-02

SHEET 2 OF 5



CONCEPT PLANT SCHEDULE DPR

	SMALL PARKING LOT TREES ARBUTUS X 'MARINA' / MARINA STRAWBERRY TREE STANDARD OLEA EUROPAEA 'MONHER' TM / MAJESTIC BEAUTY FRUITLESS OLIVE	31
	PARKING LOT SHADE TREES PISTACIA CHINENSIS / CHINESE PISTACHE PLATANUS X ACERIFOLIA 'BLOODGOOD' / BLOODGOOD LONDON PLANE TREE	159
	STREET TREES CHILOPSIS LINEARIS / DESERT WILLOW LOPHOSTEMON CONFERTUS / BRISBANE BOX PLATANUS X ACERIFOLIA 'BLOODGOOD' / BLOODGOOD LONDON PLANE TREE QUERCUS ILEX / HOLLY OAK TABEBUIA AVELLANEDAE / PINK LAPACHO	128
	ACCENT TREES CERCIS CANADENSIS / EASTERN REDBUD CERCIS OCCIDENTALIS / WESTERN REDBUD X CHITALPA TASHKENTENSIS / CHITALPA	12
	SCREENING TREES ARBUTUS X 'MARINA' / MARINA STRAWBERRY TREE MULTI-TRUNK HETEROMELES ARBUTIFOLIA / TOYON	16
	BUILDING SCREENING MELALEUCA QUINQUENARIA / CAJEPUT TREE MULTI-TRUNK OLEA EUROPAEA / OLIVE MULTI-TRUNK	158
	SHRUBS AND GROUNDCOVER ARCTOSTAPHYLOS HOOKERI / MONTEREY CARPET / MONTEREY CARPET HOOKER'S MANZANITA CISTUS X PURPUREUS / ORCHID ROCKROSE HESPERALOE PARVIFLORA / RED YUCCA LANTANA X 'NEW GOLD' / NEW GOLD LANTANA MUHLENBERGIA CAPILLARIS 'PINK CLOUD' / PINK CLOUD PINK MUHLY GRASS ROSMARINUS OFFICINALIS 'PROSTRATUS' / DWARF ROSEMARY SALVIA GREGGII 'FURMANS RED' / FURMAN'S RED AUTUMN SAGE WESTRINGIA FRUTICOSA 'MIA'S WONDER' / MIA'S WONDER WESTRINGIA	101,003 SF
	BASIN SLOPES BACCHARIS PILULARIS 'PIGEON POINT' / PIGEON POINT COYOTE BRUSH DIANELLA REVOLUTA 'ALLYN-CITATION' TM / COOLVISTA FLAX LILY HETEROMELES ARBUTIFOLIA / TOYON LEYMUS CINEREUS / GREAT BASIN WILDRYE MUHLENBERGIA CAPILLARIS / PINK MUHLY GRASS	67,786 SF
	STREETSCAPE SHRUB PLANTING DASYLIRON WHEELERI / GREY DESERT SPOON GREVILLEA X 'NOELLI' / NOEL GREVILLEA LANTANA X 'NEW GOLD' / NEW GOLD LANTANA ROSMARINUS OFFICINALIS 'HUNTINGTON CARPET' / HUNTINGTON CARPET ROSEMARY SALVIA GREGGII 'FURMANS RED' / FURMAN'S RED AUTUMN SAGE WESTRINGIA FRUTICOSA 'MIA'S WONDER' / MIA'S WONDER WESTRINGIA	45,290 SF
	SLOPES BACCHARIS PILULARIS 'PIGEON POINT' / PIGEON POINT COYOTE BRUSH LANTANA X 'NEW GOLD' / NEW GOLD LANTANA MUHLENBERGIA CAPILLARIS 'PINK CLOUD' / PINK CLOUD PINK MUHLY GRASS ROSMARINUS OFFICINALIS 'PROSTRATUS' / DWARF ROSEMARY	129,234 SF
	RUNWAY PLANTING ARTEMISIA PYCNOCEPHALA / BEACH SAGEWORT OENOTHERA CAESPITOSA / TUFTED EVENING PRIMROSE PENSTEMON BACCHARIFOLIUS 'DEL RIO' / DEL RIO ROCK PENSTEMON TRACHELOSPERMUM JASMINOIDES 'CONFEDERATE' / CONFEDERATE JASMINE ZAUSCHNERIA CALIFORNICA 'CATALINA' / CALIFORNIA FUCHSIA	379,454 SF
	HYDROSEED SEED MIX TO INCLUDE LOW WATER USE, GRASSES TO BE NO TALLER THAN 36" HIGH	43,051 SF

REFERENCE NOTES SCHEDULE DPR

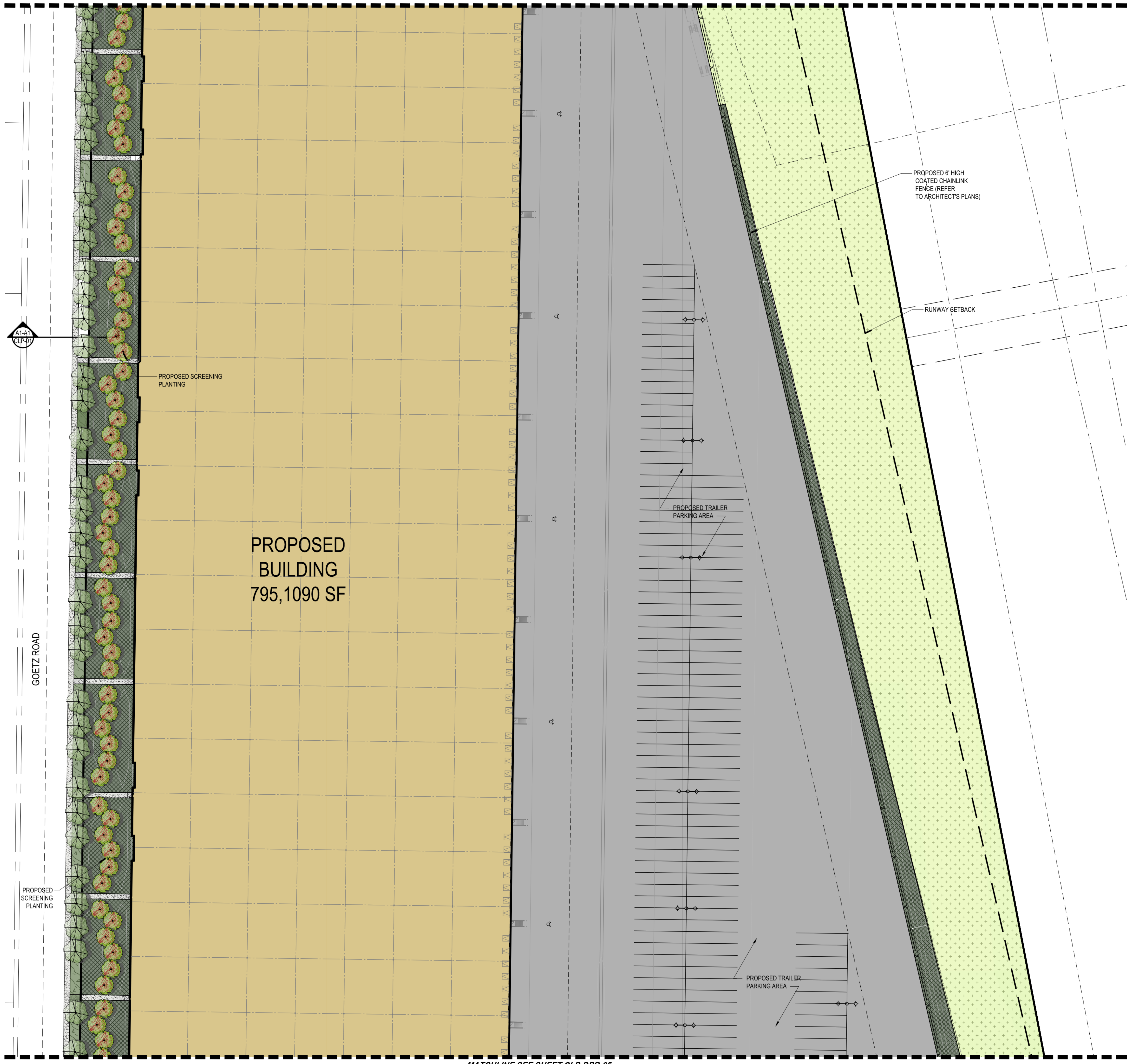
SYMBOL	CONCRETE PAVING DESCRIPTION	QTY
	32-13 COLORED CONCRETE	8,322 SF
SYMBOL	UNIT PAVING DESCRIPTION	QTY
	32-14 CONCRETE	33,517 SF
SYMBOL	CURBS AND GUTTERS DESCRIPTION	QTY
	32-16 COBBLE, MORTARED	151 SF



CLP-DPR-03

H:\2021\21-0235\DRAWINGS\PLAN SHEETS\21-0235 CLP.DWG 8/22/2023 5:13:56 PM Nicolay

MATCHLINE SEE SHEET CLP-DPR-03

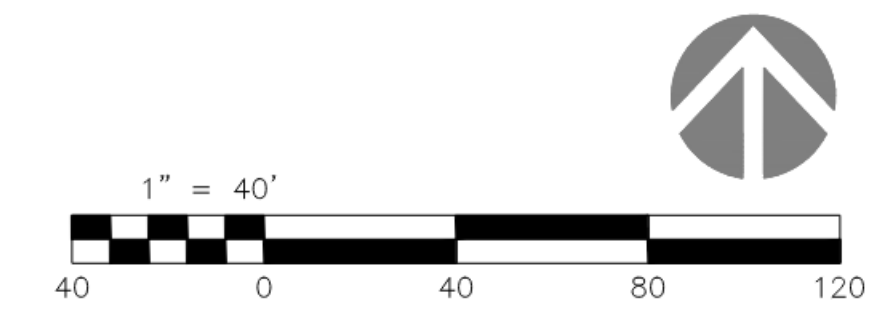


CONCEPT PLANT SCHEDULE DPR

	SMALL PARKING LOT TREES ARBUTUS X 'MARINA' / MARINA STRAWBERRY TREE STANDARD OLEA EUROPAEA 'MONHER' TM / MAJESTIC BEAUTY FRUITLESS OLIVE	31
	PARKING LOT SHADE TREES PISTACIA CHINENSIS / CHINESE PISTACHE PLATANUS X ACERIFOLIA 'BLOODGOOD' / BLOODGOOD LONDON PLANE TREE	159
	STREET TREES CHILOPSIS LINEARIS / DESERT WILLOW LOPHOSTEMON CONFERTUS / BRISBANE BOX PLATANUS X ACERIFOLIA 'BLOODGOOD' / BLOODGOOD LONDON PLANE TREE QUERCUS ILEX / HOLLY OAK TABEBUIA AVELLANEDAE / PINK LAPACHO	128
	ACCENT TREES CERCIS CANADENSIS / EASTERN REDBUD CERCIS OCCIDENTALIS / WESTERN REDBUD X CHITALPA TASHKENTENSIS / CHITALPA	12
	SCREENING TREES ARBUTUS X 'MARINA' / MARINA STRAWBERRY TREE MULTI-TRUNK HETEROMELES ARBUTIFOLIA / TOYON	16
	BUILDING SCREENING MEJALEUCA QUINQUENERVIA / CAJEPUT TREE MULTI-TRUNK OLEA EUROPAEA / OLIVE MULTI-TRUNK	158
	SHRUBS AND GROUNDCOVER ARCTOSTAPHYLOS HOOKERI 'MONTEREY CARPET' / MONTEREY CARPET HOOKER'S MANZANITA CISTUS X PURPUREUS / ORCHID ROCKROSE HESPERALOE PARVIFLORA / RED YUCCA LANTANA X 'NEW GOLD' / NEW GOLD LANTANA MUHLENBERGIA CAPILLARIS 'PINK CLOUD' / PINK CLOUD PINK MUHLY GRASS ROSMARINUS OFFICINALIS 'PROSTRATUS' / DWARF ROSEMARY SALVIA GREGGII 'FURMANS RED' / FURMAN'S RED AUTUMN SAGE WESTRINGIA FRUTICOSA 'MIA'S WONDER' / MIA'S WONDER WESTRINGIA	101,003 SF
	BASIN SLOPES BACCHARIS PILULARIS 'PIGEON POINT' / PIGEON POINT COYOTE BRUSH DIANELLA REVOLUTA 'ALL-YN-CITATION' TM / COOLVISTA FLAX LILY HETEROMELES ARBUTIFOLIA / TOYON LEYMUS CINERELUS / GREAT BASIN WILDRYE MUHLENBERGIA CAPILLARIS / PINK MUHLY GRASS	67,786 SF
	STREETSCAPE SHRUB PLANTING DASYLIRION WHEELERI / GREY DESERT SPOON GREVILLEA X 'NOELLII' / NOEL GREVILLEA LANTANA X 'NEW GOLD' / NEW GOLD LANTANA ROSMARINUS OFFICINALIS 'HUNTINGTON CARPET' / HUNTINGTON CARPET ROSEMARY SALVIA GREGGII 'FURMANS RED' / FURMAN'S RED AUTUMN SAGE WESTRINGIA FRUTICOSA 'MIA'S WONDER' / MIA'S WONDER WESTRINGIA	45,290 SF
	SLOPES BACCHARIS PILULARIS 'PIGEON POINT' / PIGEON POINT COYOTE BRUSH LANTANA X 'NEW GOLD' / NEW GOLD LANTANA MUHLENBERGIA CAPILLARIS 'PINK CLOUD' / PINK CLOUD PINK MUHLY GRASS ROSMARINUS OFFICINALIS 'PROSTRATUS' / DWARF ROSEMARY	129,234 SF
	RUNWAY PLANTING ARTEMISIA PYCNOCEPHALA / BEACH SAGEWORT OENOTHERA CAESPITOSA / TUFTED EVENING PRIMROSE PENSTEMON BACCHARIFOLIUS 'DEL RIO' / DEL RIO ROCK PENSTEMON TRACHELOSPERMUM JASMINOIDES 'CONFEDERATE' / CONFEDERATE JASMINE ZAUSCHNERIA CALIFORNICA 'CATALINA' / CALIFORNIA FUCHSIA	379,454 SF
	HYDROSEED SEED MIX TO INCLUDE LOW WATER USE, GRASSES TO BE NO TALLER THAN 36" HIGH	43,051 SF

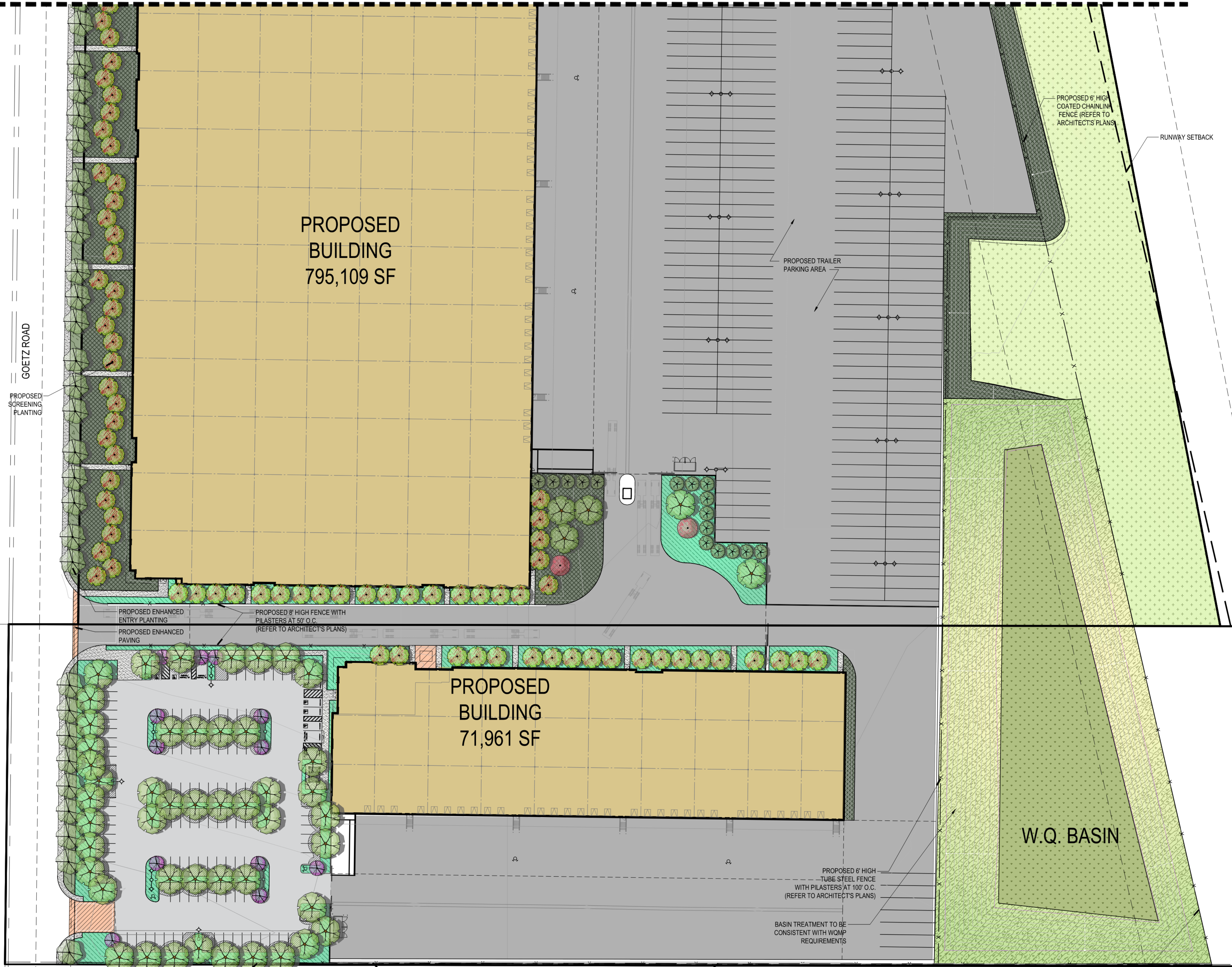
REFERENCE NOTES SCHEDULE DPR

SYMBOL	CONCRETE PAVING DESCRIPTION	QTY
	32-13 COLORED CONCRETE	8,322 SF
SYMBOL	UNIT PAVING DESCRIPTION	QTY
	32-14 CONCRETE	33,517 SF
SYMBOL	CURBS AND GUTTERS DESCRIPTION	QTY
	32-16 COBBLE, MORTARED	151 SF



CLP-DPR-04

H:\2021\21-0235\DRAWINGS\PLAN SHEETS\21-0235 CLP.DWG 8/22/2023 5:13:56 PM Nicolay



	SMALL PARKING LOT TREES ARBUTUS X 'MARINA' / MARINA STRAWBERRY TREE STANDARD OLEA EUROPAEA 'MONHER' TM / MAJESTIC BEAUTY FRUITLESS OLIVE	31
	PARKING LOT SHADE TREES PISTACIA CHINENSIS / CHINESE PISTACHE PLATANUS X ACERIFOLIA 'BLOODGOOD' / BLOODGOOD LONDON PLANE TREE	159
	STREET TREES CHILOPSIS LINEARIS / DESERT WILLOW LOPHOSTEMON CONFERTUS / BRISBANE BOX PLATANUS X ACERIFOLIA 'BLOODGOOD' / BLOODGOOD LONDON PLANE TREE QUERCUS ILEX / HOLLY OAK TABEBUIA AVELLANEDAE / PINK LAPACHO	128
	ACCENT TREES CERCIS CANADENSIS / EASTERN REDBUD CERCIS OCCIDENTALIS / WESTERN REDBUD X CHITALPA TASHKENTENSIS / CHITALPA	12
	SCREENING TREES ARBUTUS X 'MARINA' / MARINA STRAWBERRY TREE MULTI-TRUNK HETEROMELES ARBUTIFOLIA / TOYON	16
	BUILDING SCREENING MELALEUCA QUINQUENERVIA / CAJEPUT TREE MULTI-TRUNK OLEA EUROPAEA / OLIVE MULTI-TRUNK	158
	SHRUBS AND GROUNDCOVER ARCTOSTAPHYLOS HOOKERI 'MONTEREY CARPET' / MONTEREY CARPET HOOKER'S MANZANITA CISTUS X PURPUREUS / ORCHID ROCKROSE HESPERALOE PARVIFLORA / RED YUCCA LANTANA X 'NEW GOLD' / NEW GOLD LANTANA MULLENBERGIA CAPILLARIS 'PINK CLOUD' / PINK CLOUD PINK MUHLY GRASS ROSMARINUS OFFICINALIS 'PROSTRATUS' / DWARF ROSEMARY SALVIA GREGGII 'FURMAN'S RED' / FURMAN'S RED AUTUMN SAGE WESTRINGIA FRUTICOSA 'MIA'S WONDER' / MIA'S WONDER WESTRINGIA	101,003 SF
	BASIN SLOPES BACCHARIS PILULARIS 'PIGEON POINT' / PIGEON POINT COYOTE BRUSH DIANELLA REVOLUTA 'ALLYN-CITATION' TM / COOLVISTA FLAX LILY HETEROMELES ARBUTIFOLIA / TOYON LEYMUS CINEREUS / GREAT BASIN WILDRYE MULLENBERGIA CAPILLARIS / PINK MUHLY GRASS	67,786 SF
	STREETSCAPE SHRUB PLANTING DASYLIRION WHEELERI / GREY DESERT SPOON GREVILLEA X 'NOELLII' / NOEL GREVILLEA LANTANA X 'NEW GOLD' / NEW GOLD LANTANA ROSMARINUS OFFICINALIS 'HUNTINGTON CARPET' / HUNTINGTON CARPET ROSEMARY SALVIA GREGGII 'FURMAN'S RED' / FURMAN'S RED AUTUMN SAGE WESTRINGIA FRUTICOSA 'MIA'S WONDER' / MIA'S WONDER WESTRINGIA	45,290 SF
	SLOPES BACCHARIS PILULARIS 'PIGEON POINT' / PIGEON POINT COYOTE BRUSH LANTANA X 'NEW GOLD' / NEW GOLD LANTANA MULLENBERGIA CAPILLARIS 'PINK CLOUD' / PINK CLOUD PINK MUHLY GRASS ROSMARINUS OFFICINALIS 'PROSTRATUS' / DWARF ROSEMARY	129,234 SF
	RUNWAY PLANTING ARTEMISIA PYCNOCEPHALA / BEACH SAGEWORT OENOTHERA CAESPITOSA / TUFTED EVENING PRIMROSE PENSTEMON BACCHARIFOLIUS 'DEL RIO' / DEL RIO ROCK PENSTEMON TRACHELOSPERMUM JASMINOIDES 'CONFEDERATE' / CONFEDERATE JASMINE ZAUSCHNERIA CALIFORNICA 'CATALINA' / CALIFORNIA FUCHSIA	379,454 SF
	HYDROSEED SEED MIX TO INCLUDE LOW WATER USE, GRASSES TO BE NO TALLER THAN 36" HIGH	43,051 SF

REFERENCE NOTES SCHEDULE DPR

SYMBOL	CONCRETE PAVING DESCRIPTION	QTY
	32-13 COLORED CONCRETE	8,322 SF
SYMBOL	UNIT PAVING DESCRIPTION	QTY
	32-14 CONCRETE	33,517 SF
SYMBOL	CURBS AND GUTTERS DESCRIPTION	QTY
	32-16 COBBLE, MORTARED	151 SF



CLP-DPR-05