



the
project portfolio
gallery

in the city of perris, calif.

a look into the works of : the

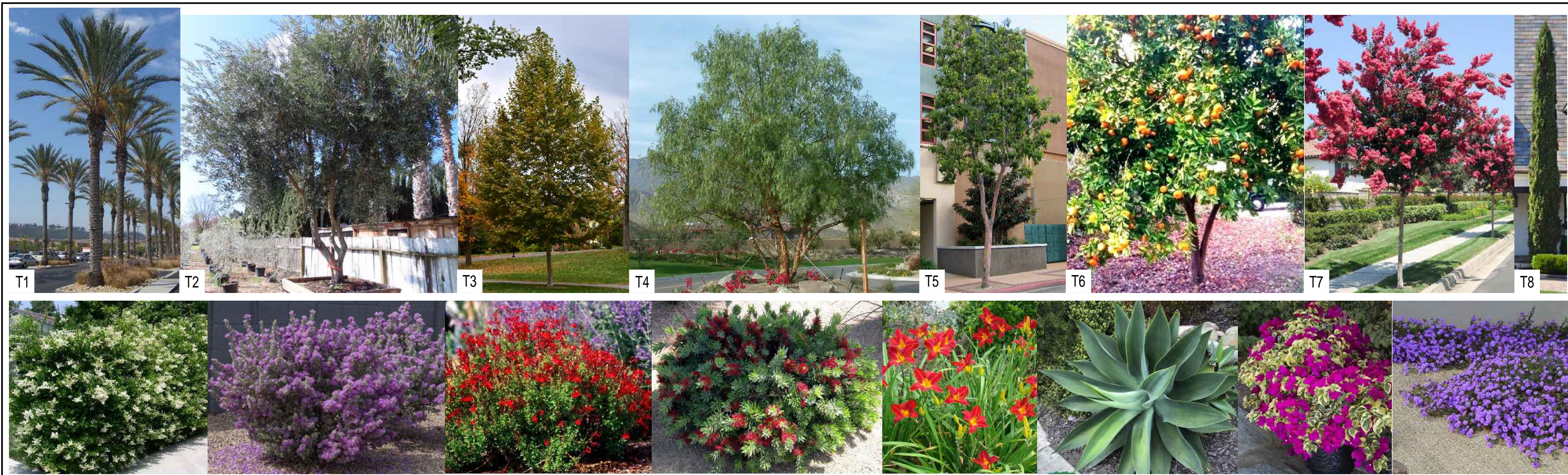


“coming soon”...



“ portfolio gallery ”...
village community
a destination at the ~



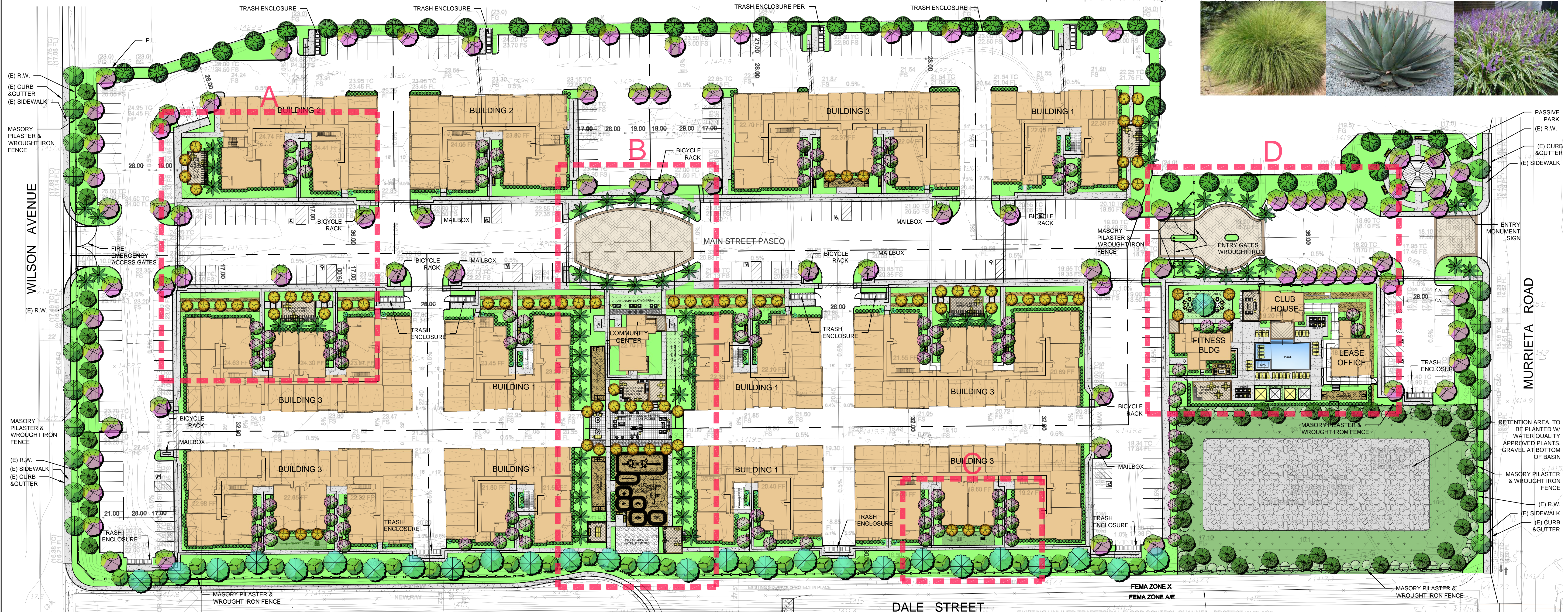


PROPOSED PLANT PALETTE

SYMBOL	PLANT NAME	SIZE	WUCOLS	QTY
TREE				
T1	Phoenix dactylifera Date Palm	16-20 B.T.H.	L	60
T2	Olea europaea 'Svan Hill' Swan Hill Olive	36" BOX	L	28
T3	Platanus acerifolia London Plane Tree	36" BOX	M	21
T4	Schinus molle Pepper Tree	24" BOX	L	53
T5	Lophostemon conferta Brisbane box	24" BOX	M	27
T6	Dwarf Citrus Tree	15 GAL	M	60
T7	Lagerstroemia i. x fauriei 'Arapahoe' Red Crape Myrtle	15 GAL	M	103
T8	Cupressus sempervirens Italian Cypress	15 GAL	L	44
T9	Chitalpa tashkentensis 'Pink Dawn' Pink Dawn Chitalpa	15 GAL	L	84
T10	Quercus ilex Holly Oak	24" BOX	L	38
SHRUB				
	Ligustrum japonicum 'Texanum' Japanese Privet	5 GAL	M	-
	Leucophyllum f. 'Green Cloud' Texas Sage 'Green Cloud'	5 GAL	L	-
	Salvia g. 'Furman's Red' Furman's Red Autumn Sage	5 GAL	L	-

(SHRUB & GROUND COVER PLANTS NOT SPECIFIED)
NOTE: QUANTITIES WILL BE FINALIZED DURING FINAL CONSTRUCTION DOCUMENTS PHASE.

Lupinus excubitus Grape Soda Lupine	1 GAL	L	-
Callistemon 'Little John' Dwarf Bottlebrush	5 GAL	L	-
Emerocallis hybrid Evergreen Red Daylily	1 GAL	M	-
Agave attenuata Foxtail Agave	5 GAL	L	-
Bougainvillea 'La Jolla' La Jolla Bougainvillea	1 GAL	L	-
Lantana montevidensis Trailing Purple Lantana	1 GAL	L	-
Alice arborescens Tree Aloe	5 GAL	L	-
Muhlenbergia rigens Deer Grass	1 GAL	M	-
Agave 'Blue Glow' Blue Glow Agave	5 GAL	L	-
Liriope muscari Big Blue Leaf Turf	1 GAL	M	-
Festuca mairei spp Atlas Fescue	1 GAL	M	-
Bougainvillea 'Barbara Karst' Barbara Karst Bougainvillea	15 GAL	L	-
Clytostoma calystegioides Lavender Trumpet Vine	15 GAL	M	-
GROUND COVER			
Myoporum parvifolium Prostrate Myoporum	1 GAL 4 G.C.	L	-

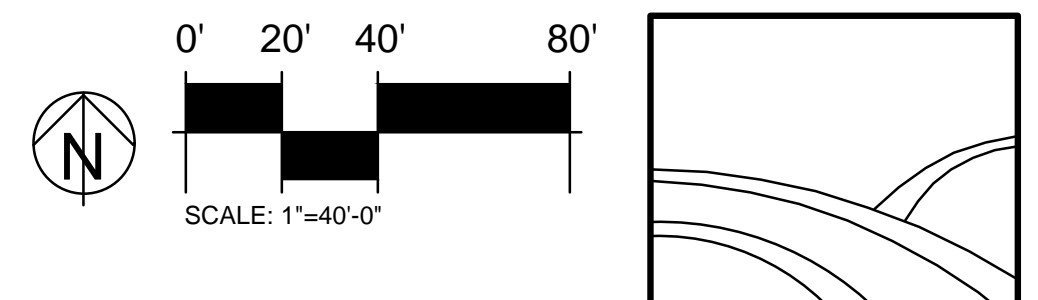


SITE PLAN

PLANTING DESIGN:
PLANTS GROUPED TOGETHER WITH THE SAME WATER NEEDS TAKING INTO ACCOUNT THE N/E AND S/W EXPOSURES. MOSTLY LOW WUCOLS PLANTS AND NO TURF WAS USED TO MINIMIZE WATER CONSUMPTION. AGRONOMY SOILS REPORT TO BE CONDUCTED AFTER GRADING TO IMPROVE AND AMEND SOILS AS PER SOILS ANALYSIS REPORT, AND TO PROMOTE GOOD PLANT HEALTH, REDUCE WATERING AND MINIMIZE WATER RUN-OFF. ALL PLANTING AREAS TO RECEIVE A 3" LAYER OF MEDIUM GRIND 3" MULCH IN ALL PLANTER BEDS TO HELP CONTAIN SOIL MOISTURE AND TO REDUCE E.T.

IRRIGATION DESIGN:
NO OVERHEAD IRRIGATION WAS USED, IN ORDER TO MINIMIZE WATER RUN-OFF AND WATER CONSUMPTION. ALL LOW VOLUME DRIP IRRIGATION SYSTEMS USED TO ALSO MINIMIZE E.T. 'SMART CONTROLLERS' WITH LOCAL E.T./ON-SITE WATER MANAGEMENT CAPABILITY WERE USED. FLOW SENSING AND MASTER-VALVES WERE ALSO USED IN THE DESIGN TO ASSIST WITH BROKEN WATER LINES AND SITE RUN-OFF. POTABLE WATER TO BE CONVERTED TO RECYCLED WATER WHEN AVAILABLE.

GENERAL:
REGULARLY SCHEDULED MAINTENANCE OF PRUNING, WEEDED AND FERTILIZING OF PLANTS TO PRODUCE HEALTHIER PLANTS WITH LESS WATER NEEDS. WITH THIS CONCEPT OF THE LANDSCAPE DESIGN AND THAT IS WELL ADAPTED TO THE ENVIRONMENT WILL REQUIRE LESS MAINTENANCE, LESS FERTILIZER AND REDUCE THE USE OF PESTICIDES AND OTHER CHEMICALS.

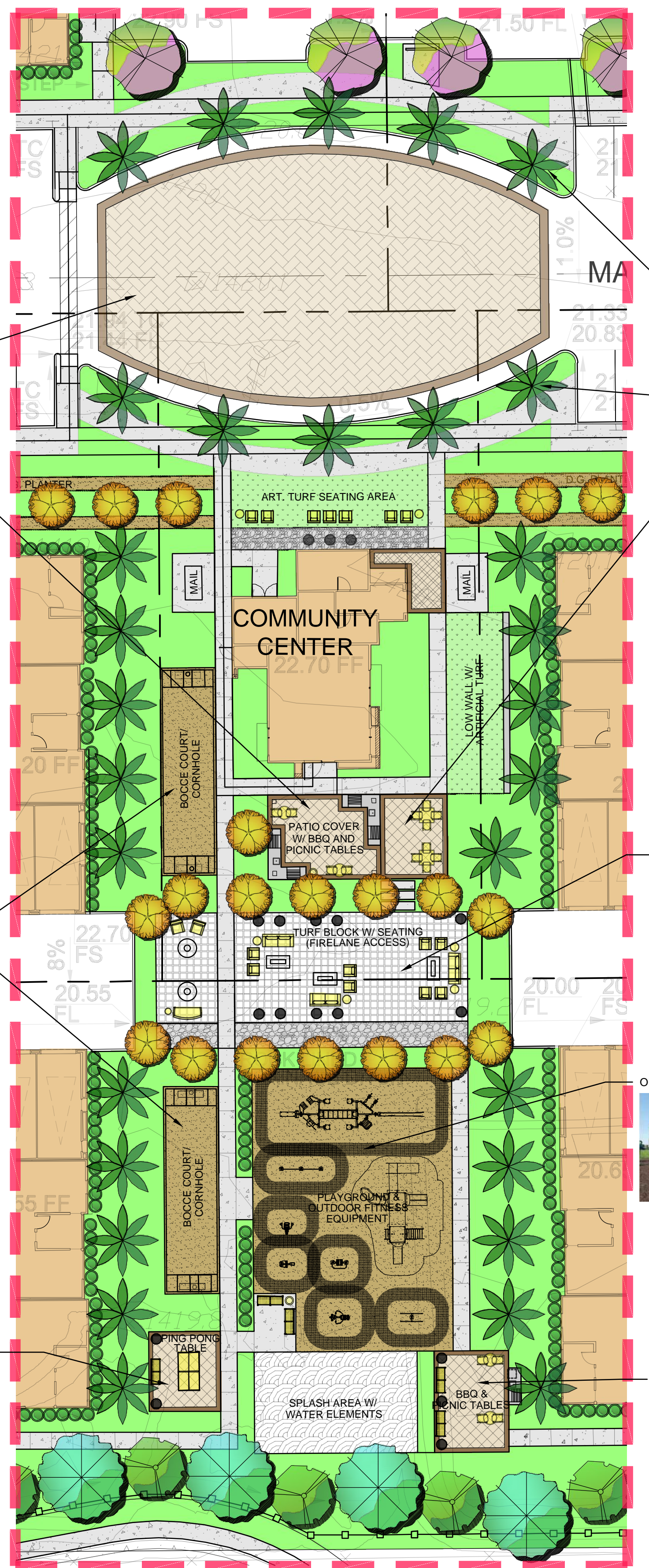


Prairie View - New Apts. Conceptual Landscape Plan
Murrieta Rd, Perris, CA

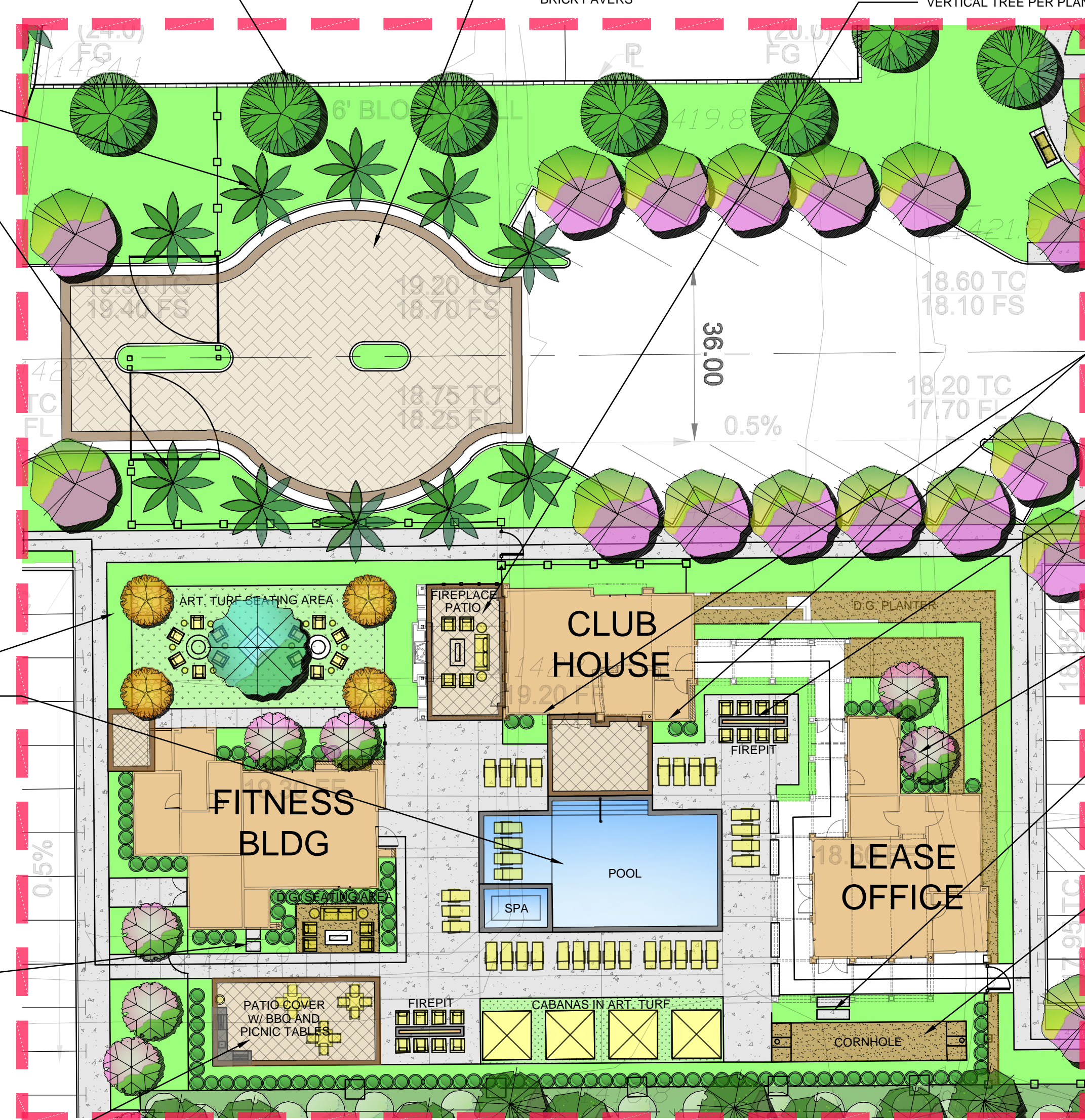
Representative:
Archimetrics
1177 Idaho St. Suite 200
Redlands, CA 92374

APN: 311-502-001
Proposed Zoning: MFR-22 (MultiFamily 22)

LandArq, Inc.
865 S. Milliken Ave. Suite E
Ontario, CA 91761
Phone: 909-259-9428
Email: fausto@landarq.com
Page: 1 of 3
Date: 2.09.2023



B. COMMUNITY CENTER



D. CLUB HOUSE COURTYARD



BRICK PAVERS



PALM TREE PER PLANTING LEGEND



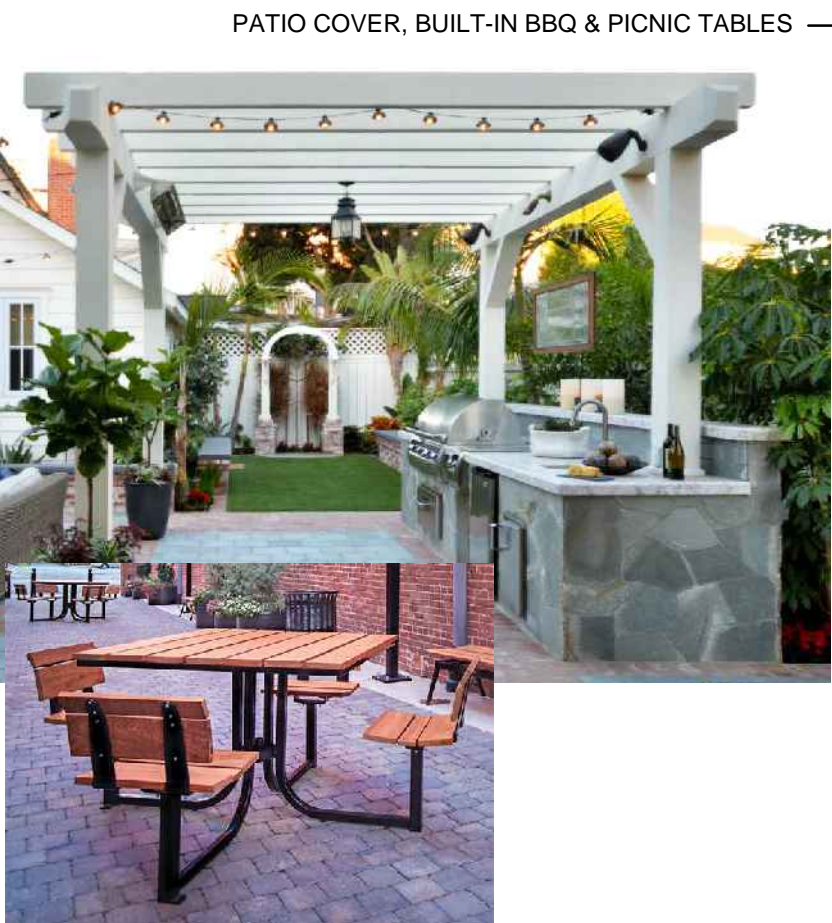
6' HIGH BLOCK WALL PER CITY STDS.



BRICK PAVERS



VERTICAL TREE PER PLANTING LEGEND



PATIO COVER, BUILT-IN BBQ & PICNIC TABLES



PAVED PATIO TO HAVE A 1" WIDE COLORED CONCRETE BAND AND PAVERS.



TURF BLOCK



SCREENING SHRUBS PER PLANTING LEGEND.



POOL AREA



OUTDOOR FITNESS EQUIPMENT



STEPPING STONES



BBQ & PICNIC TABLES



PATIO COVER, BUILT-IN BBQ & PICNIC TABLES



VERTICAL TREE PER PLANTING LEGEND



LINEAR FIRE PIT

SHRUB SCREENING ALONG BUILDINGS



STEPPING STONES

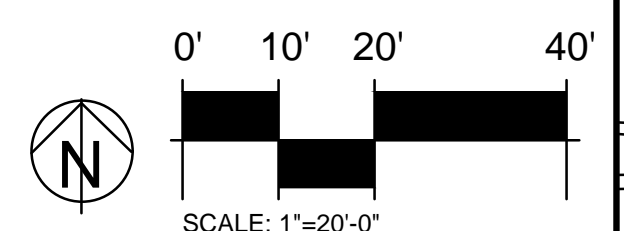
COMPACTED D.G. BOCCO BALL CORNHOLE COURT



KEYMAP



SCALE: N.T.S.



SCALE: 1"=20'-0"

LandArq, Inc.
 865 S. Milliken Ave. Suite E
 Ontario, CA 91761
 Phone: 909-259-9428
 Email: fausto@landarq.com
 Page: 2 of 3
 Date: 02.09.2023

SCREENING TREES AND SHRUBS PER PLANTING LEGEND.



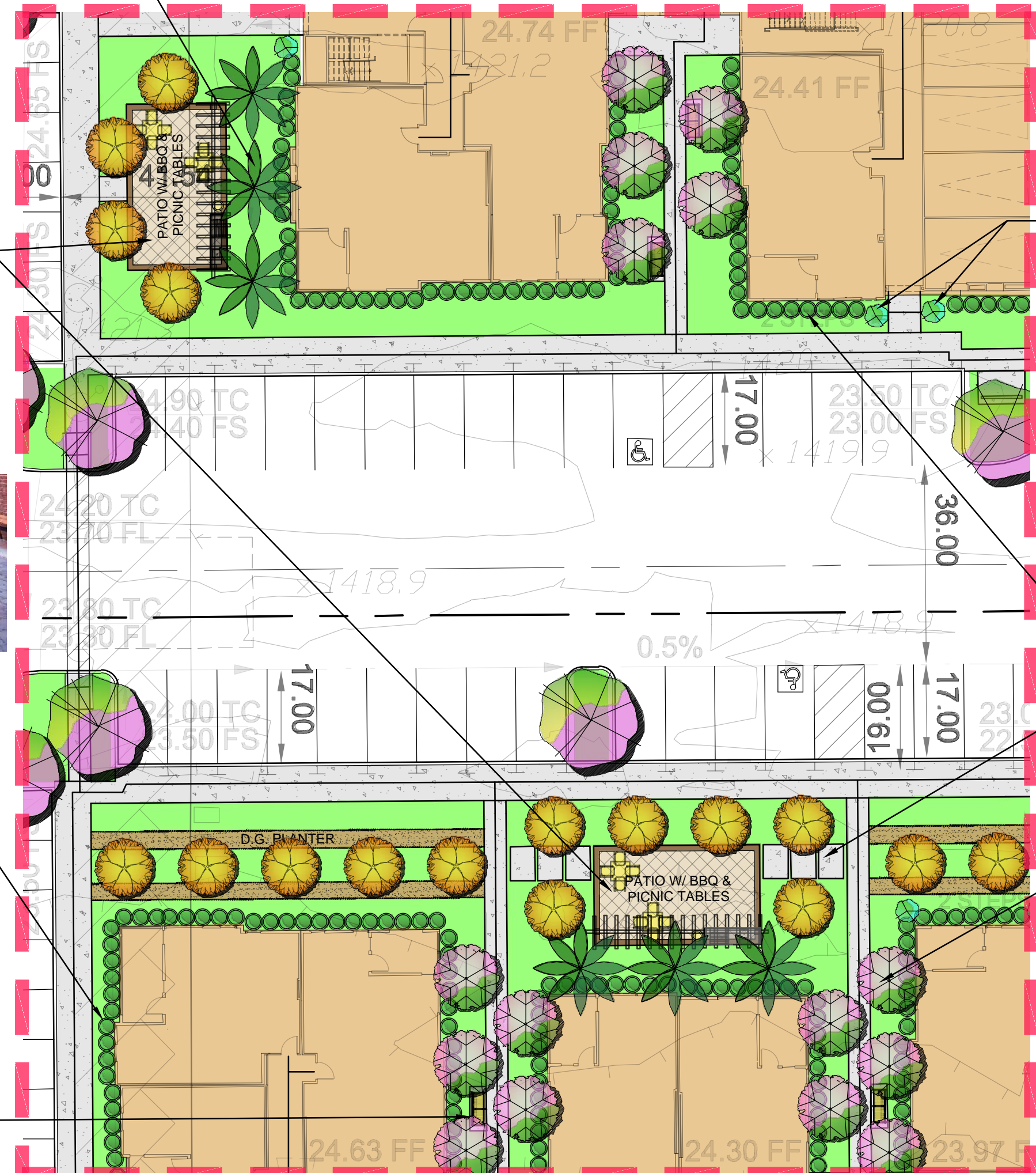
PATIO COVER, BUILT-IN BBQ & PICNIC TABLES



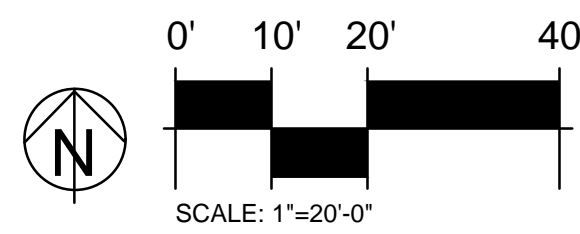
SHRUB SCREENING ALONG BUILDINGS



BENCH IN D.G.



A. PATIO W/BBQ AREA



VERTICAL TREE PER PLANTING LEGEND



SHRUB SCREENING ALONG BUILDINGS



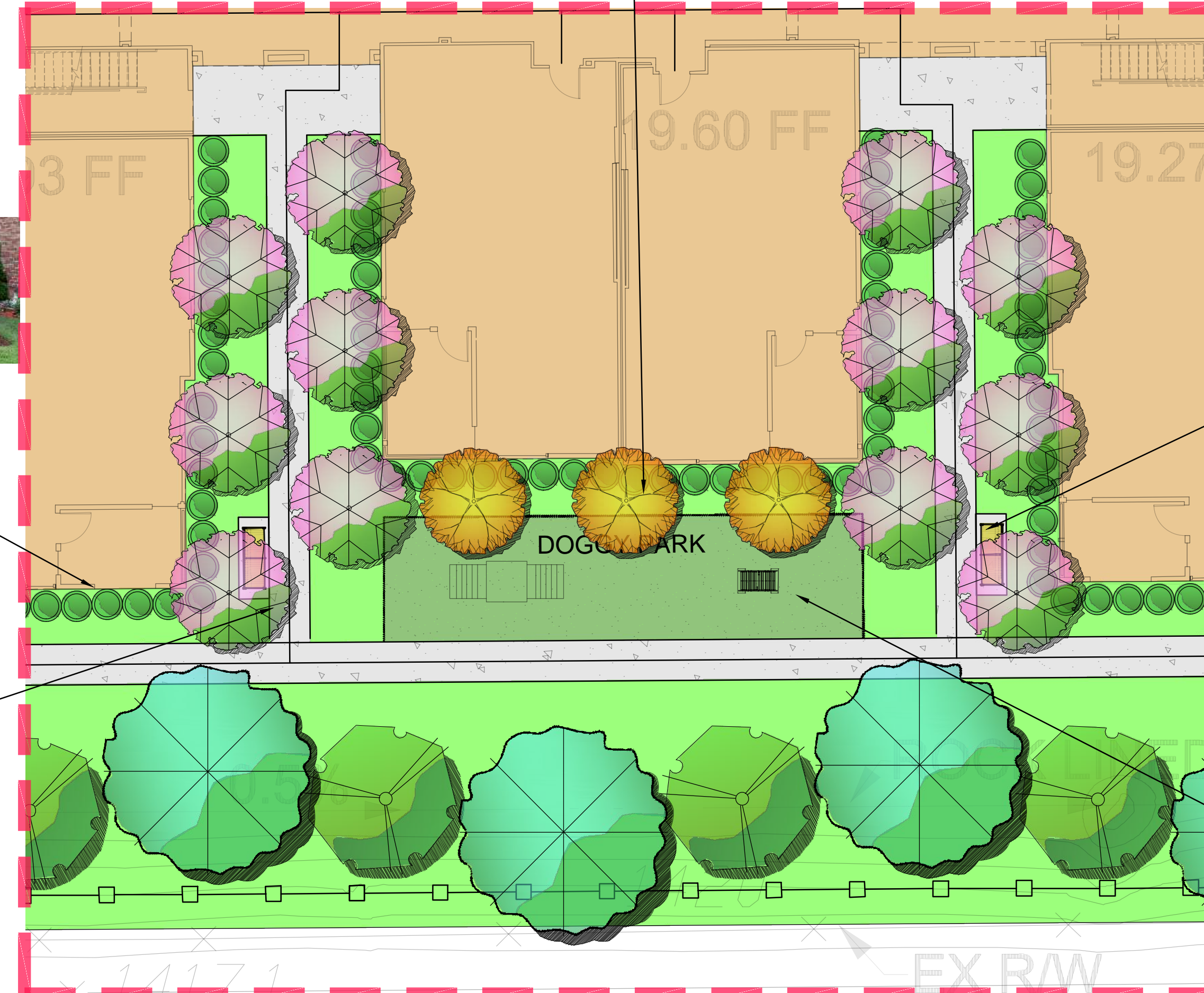
STEPPING STONES



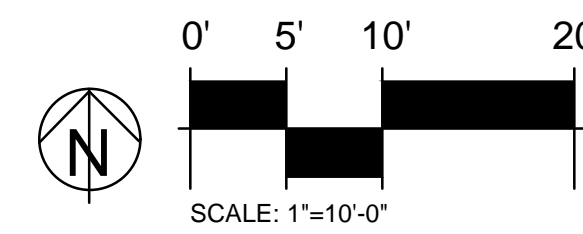
SHADING PATHWAY



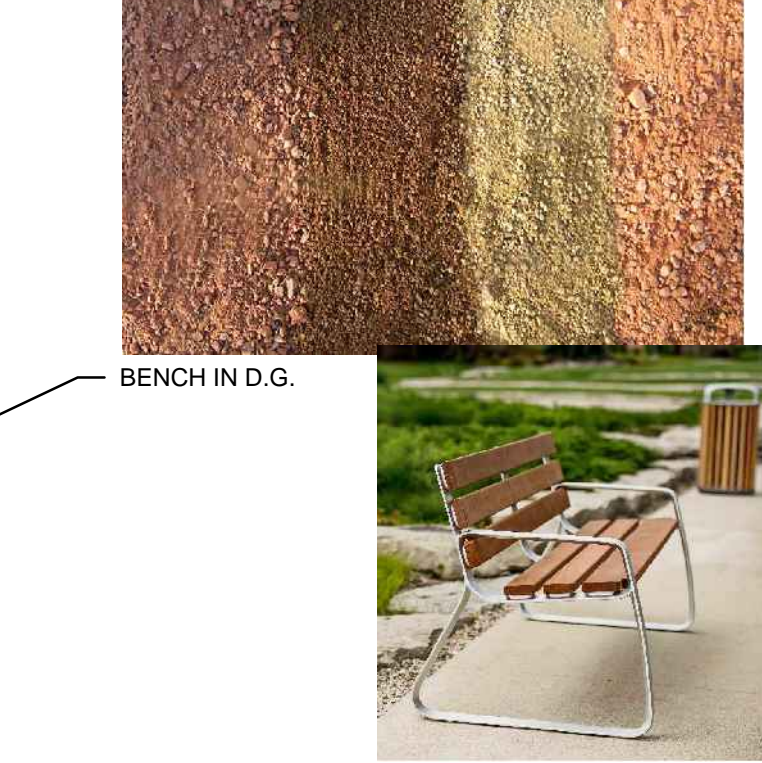
SCREENING TREES AND SHRUBS PER PLANTING LEGEND.



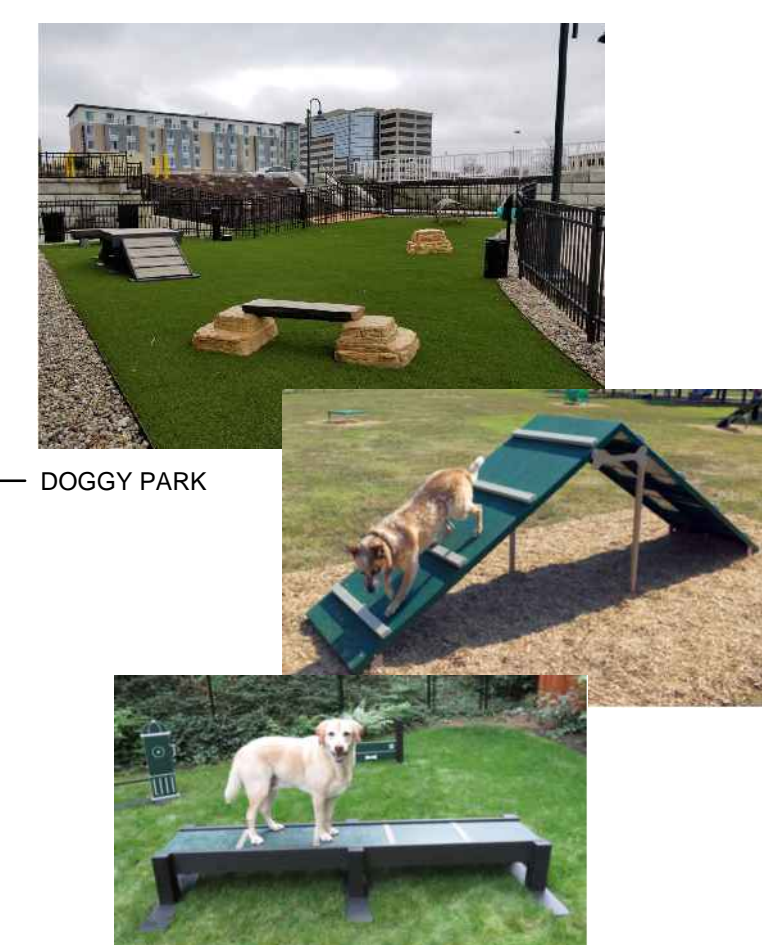
C. DOGGY PARK



BENCH IN D.G.



DOGGY PARK



Riverside County Ordinance 859 Landscape Water Use Calculations			
Project Type: Residential			
Perris Apts.			
0.50 ETo allowance			
1 Maximum Annual Water Allowance (MAWA)		ETo for the site based on the following: 123,775 S.F.	
INPUT Square Footage of Hydrozone = 123,775		ETo for the site = 15,472 cu ft/yr	
MAWA = 282,123 cu ft/yr			
2 Estimated Annual Water Use (EAWU)			
Hydrozone # 1	INPUT Square Footage of Hydrozone = 123,775	Plant Factor = 0.2	Plant Type = Street/Driveway
	Hydrozone Irrigation Efficiency = 0.85		Water Use = 36,764 cu ft/yr
	EAWU = 110,352 cu ft/yr		
Hydrozone # 2	INPUT Square Footage of Hydrozone = 123,775	Plant Factor = 0.2	Plant Type = Trees/Grass
	Hydrozone Irrigation Efficiency = 0.85		Water Use = 36,764 cu ft/yr
	EAWU = 110,352 cu ft/yr		
Hydrozone # 3	INPUT Square Footage of Hydrozone = 123,775	Plant Factor = 0.2	Plant Type = Street/Driveway
	Hydrozone Irrigation Efficiency = 0.85		Water Use = 36,764 cu ft/yr
	EAWU = 110,352 cu ft/yr		
Hydrozone # 4	INPUT Square Footage of Hydrozone = 123,775	Plant Factor = 0.2	Plant Type = Trees/Grass
	Hydrozone Irrigation Efficiency = 0.85		Water Use = 36,764 cu ft/yr
	EAWU = 110,352 cu ft/yr		
Sub Total EAWU = 130,676 cu ft/yr		Input Irrigation System Operation Factor = 0.85	
Final EAWU = 111,105 cu ft/yr		MAWA - EAWU = 171,018 cu ft/yr	
		(this number must be positive)	
PERCENTAGE OF WATER SAVED RELATIVE TO MAX. ALLOWED = 42%			
* Trees are not required to be listed as a separate hydrozone if understorey is planted with plants of an equal or higher plant factor, and that area is already included in calculations.			

KEYMAP

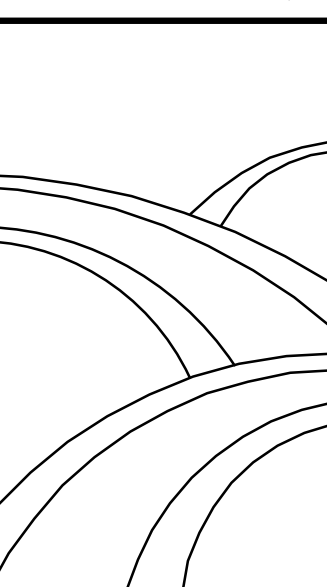


SCALE: N.T.S.

Prairie View - New Apts. Conceptual Landscape Plan

Murrieta Rd, Perris, CA

LandArq, Inc.
865 S. Milliken Ave. Suite E
Ontario, CA 91761
Phone: 909-259-9428
Email: fausto@landarq.com
Page: 3 of 3



Date: 02.09.2023